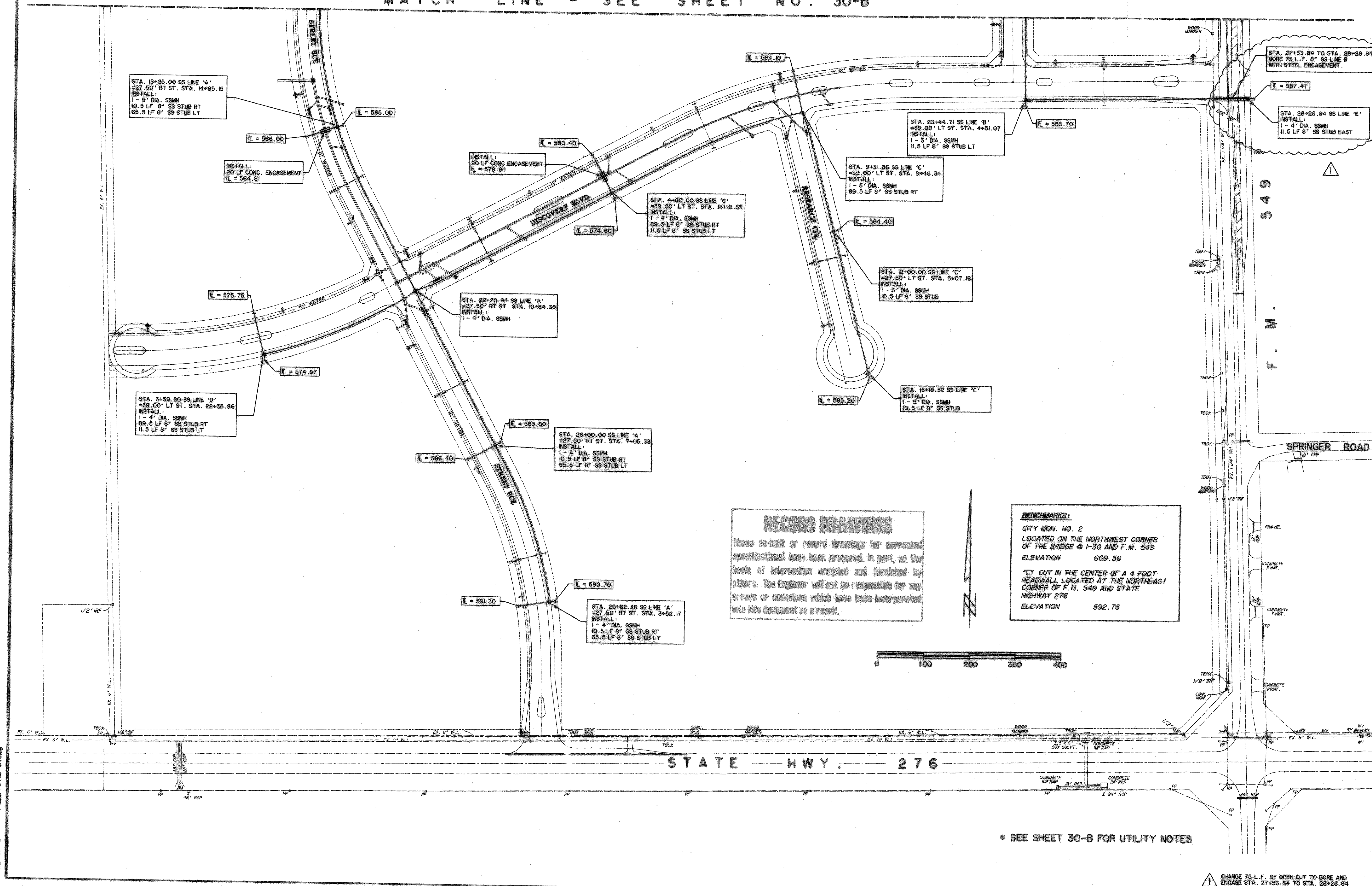


MATCH LINE - SEE SHEET NO. 30-B



STA. 18+25.00 SS LINE 'A'  
=27.50' RT ST. STA. 14+85.15  
INSTALL:  
1 - 5' DIA. SSMH  
10.5 LF 8" SS STUB RT  
65.5 LF 8" SS STUB LT

INSTALL:  
20 LF CONC. ENCASMENT  
E = 564.81

STA. 3+58.80 SS LINE 'D'  
=39.00' LT ST. STA. 22+38.96  
INSTALL:  
1 - 4' DIA. SSMH  
89.5 LF 8" SS STUB RT  
11.5 LF 8" SS STUB LT

INSTALL:  
20 LF CONC. ENCASMENT  
E = 579.84

STA. 4+80.00 SS LINE 'C'  
=39.00' LT ST. STA. 14+10.33  
INSTALL:  
1 - 4' DIA. SSMH  
89.5 LF 8" SS STUB RT  
11.5 LF 8" SS STUB LT

STA. 23+44.71 SS LINE 'B'  
=39.00' LT ST. STA. 4+51.07  
INSTALL:  
1 - 5' DIA. SSMH  
11.5 LF 8" SS STUB LT

STA. 9+31.86 SS LINE 'C'  
=39.00' LT ST. STA. 9+48.34  
INSTALL:  
1 - 5' DIA. SSMH  
89.5 LF 8" SS STUB RT

STA. 12+00.00 SS LINE 'C'  
=27.50' LT ST. STA. 3+07.18  
INSTALL:  
1 - 5' DIA. SSMH  
10.5 LF 8" SS STUB

STA. 22+20.94 SS LINE 'A'  
=27.50' RT ST. STA. 10+84.38  
INSTALL:  
1 - 4' DIA. SSMH

STA. 15+18.32 SS LINE 'C'  
INSTALL:  
1 - 5' DIA. SSMH  
10.5 LF 8" SS STUB

STA. 26+00.00 SS LINE 'A'  
=27.50' RT ST. STA. 7+05.33  
INSTALL:  
1 - 4' DIA. SSMH  
10.5 LF 8" SS STUB RT  
65.5 LF 8" SS STUB LT

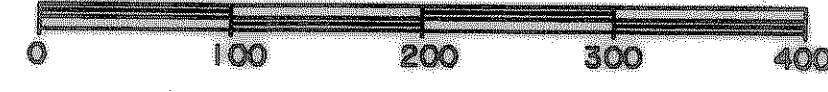
STA. 29+62.38 SS LINE 'A'  
=27.50' RT ST. STA. 3+52.17  
INSTALL:  
1 - 4' DIA. SSMH  
10.5 LF 8" SS STUB RT  
65.5 LF 8" SS STUB LT

STA. 27+53.84 TO STA. 28+26.84  
BORE 75 L.F. 8" SS LINE B  
WITH STEEL ENCASMENT.

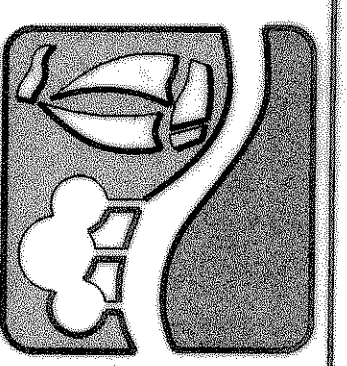
STA. 28+26.84 SS LINE 'B'  
INSTALL:  
1 - 4' DIA. SSMH  
11.5 LF 8" SS STUB EAST

**RECORD DRAWINGS**  
These as-built or record drawings (or corrected specifications) have been prepared, in part, on the basis of information compiled and furnished by others. The Engineer will not be responsible for any errors or omissions which have been incorporated into this document as a result.

**BENCHMARKS:**  
CITY MON. NO. 2  
LOCATED ON THE NORTHWEST CORNER  
OF THE BRIDGE @ I-30 AND F.M. 549  
ELEVATION 609.56  
CUT IN THE CENTER OF A 4 FOOT  
HEADWALL, LOCATED AT THE NORTHEAST  
CORNER OF F.M. 549 AND STATE  
HIGHWAY 276  
ELEVATION 592.75

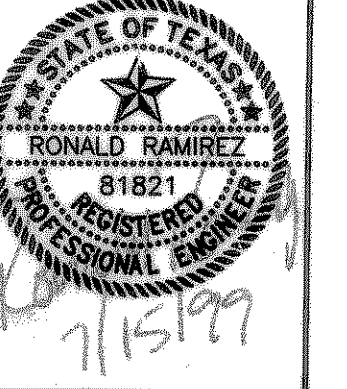


PREPARED BY:  
**WIER & ASSOCIATES, INC.**  
ENGINEERS SURVEYORS LAND PLANNERS  
4108 AMAR CANYON BLVD. SUITE 200 FORT WORTH, TEXAS 76116 METRO (817)467-7700  
(817)355-8437



**ROCKWALL  
TECHNOLOGY  
PARK**

**SANITARY SEWER  
LAYOUT**



COPYRIGHT ©  
WIER & ASSOCIATES, INC.  
LAST SHEET EDIT  
DATE 07-14-99  
WA# 9804  
**SHEET NO.  
30-A**

TIME: 05:18  
FILE: UTIL-C.dwg

\* SEE SHEET 30-B FOR UTILITY NOTES

CHANGE 75 L.F. OF OPEN CUT TO BORE AND  
ENCASE STA. 27+53.84 TO STA. 28+26.84