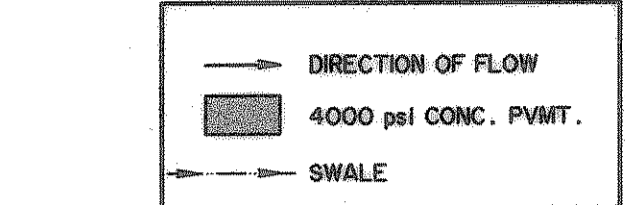
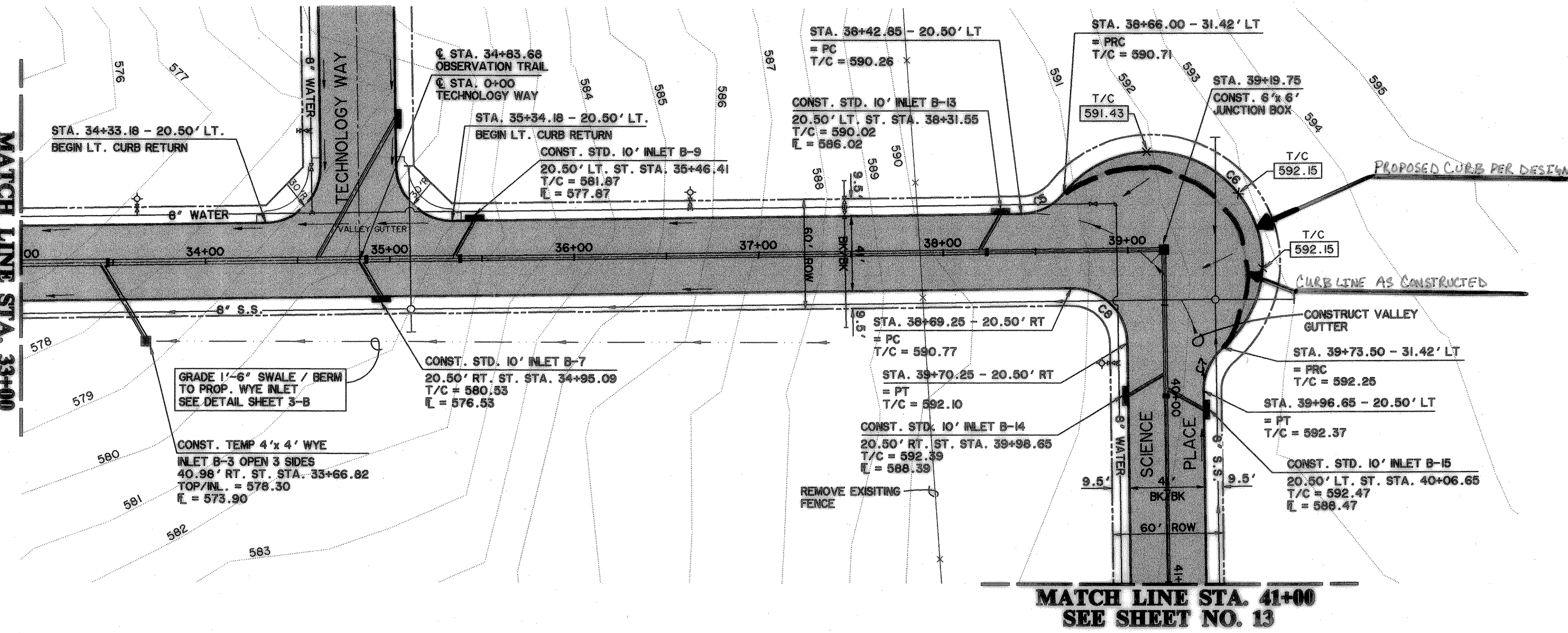
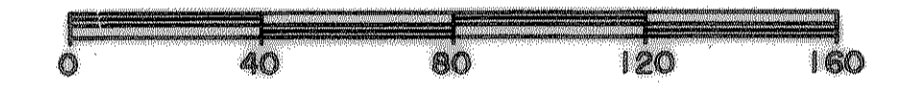


TIME: 17:09 FILE: 18pp5.dwg

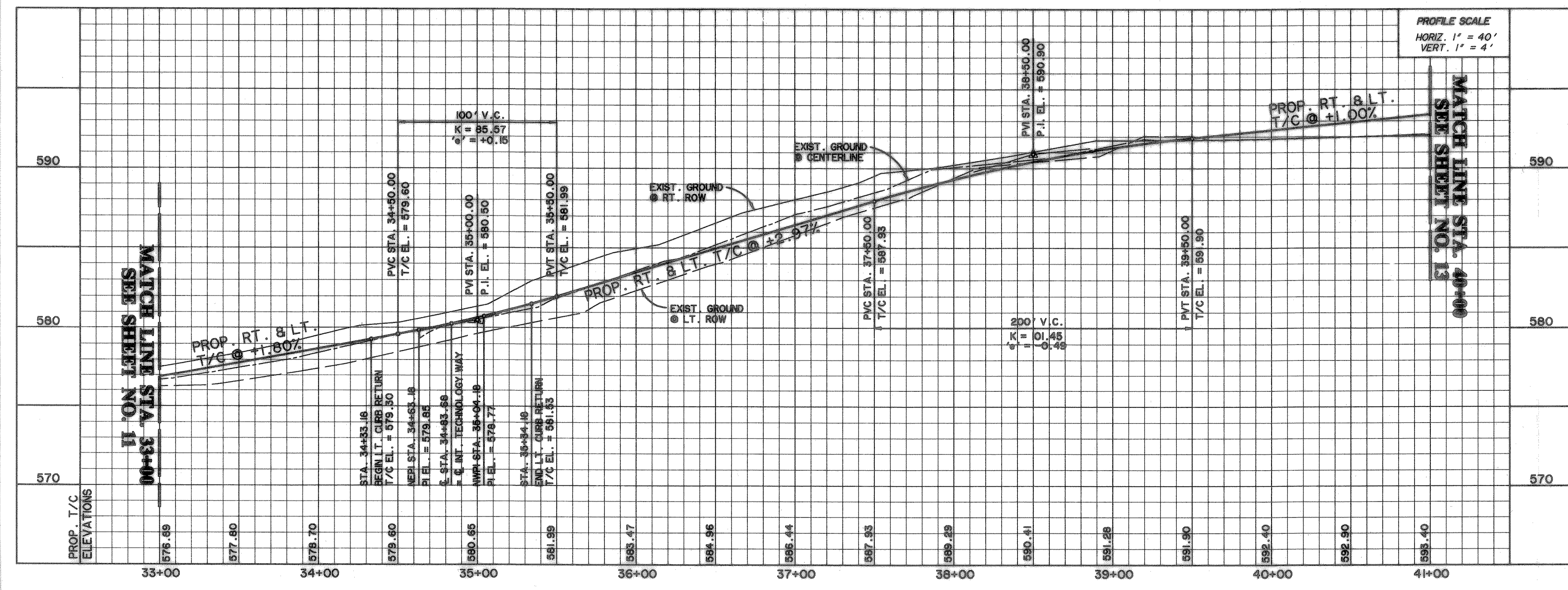
MATCH LINE STA. 33+00  
SEE SHEET NO. 11



CURVE TABLE				
CURVE	LENGTH	RADIUS	DELTA	TANGENT
C5	26.44	30.00	50°29'42"	14.15
C6	201.67	60.50	190°59'25"	628.88
C7	26.44	30.00	50°29'42"	14.15
C8	47.12	30.00	90°00'00"	30.00



**OBSERVATION TRAIL**

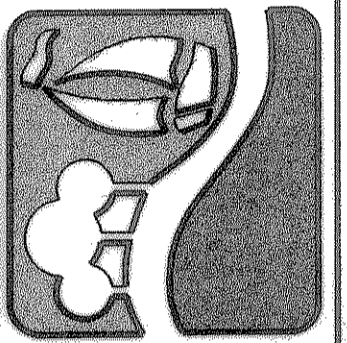


PROFILE SCALE  
HORIZ. 1" = 40'  
VERT. 1" = 4'

**BENCHMARKS:**  
CITY MON. NO. 2  
LOCATED ON THE NORTHWEST CORNER  
OF THE BRIDGE @ I-30 AND F.M. 549  
ELEVATION 609.56  
  
"C" CUT IN THE CENTER OF A 4 FOOT  
HEADWALL LOCATED AT THE NORTHEAST  
CORNER OF F.M. 549 AND STATE  
HIGHWAY 276  
ELEVATION 592.75

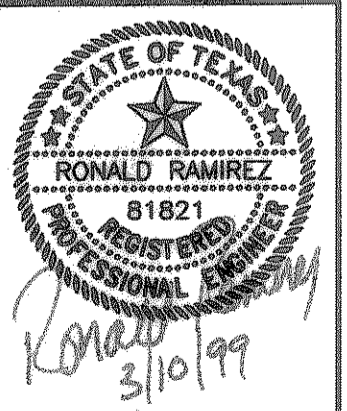
**RECORD DRAWINGS**  
These as-built or record drawings (or corrected specifications) have been prepared, in part, on the basis of information compiled and furnished by others. The Engineer will not be responsible for any errors or omissions which have been incorporated into this document as a result.

PREPARED BY:  
**WIER & ASSOCIATES, INC.**  
ENGINEERS SURVEYORS LAND PLANNERS  
430 BELWAY PLACE SUITE 130 ARLINGTON, TEXAS 76010 METRO (817)467-7700  
416 AMAR CENTER BLVD., SUITE 200 FORT WORTH, TEXAS 76102 METRO (817)355-9457



**ROCKWALL TECHNOLOGY PARK**

**OBSERVATION TR. PAVING PLAN & PROFILE**  
STA. 33+00 TO STA. 41+00



COPYRIGHT ©  
WIER & ASSOCIATES, INC.  
LAST SHEET EDIT  
DATE 03-08-99  
WA# 9804  
**SHEET NO. 12**