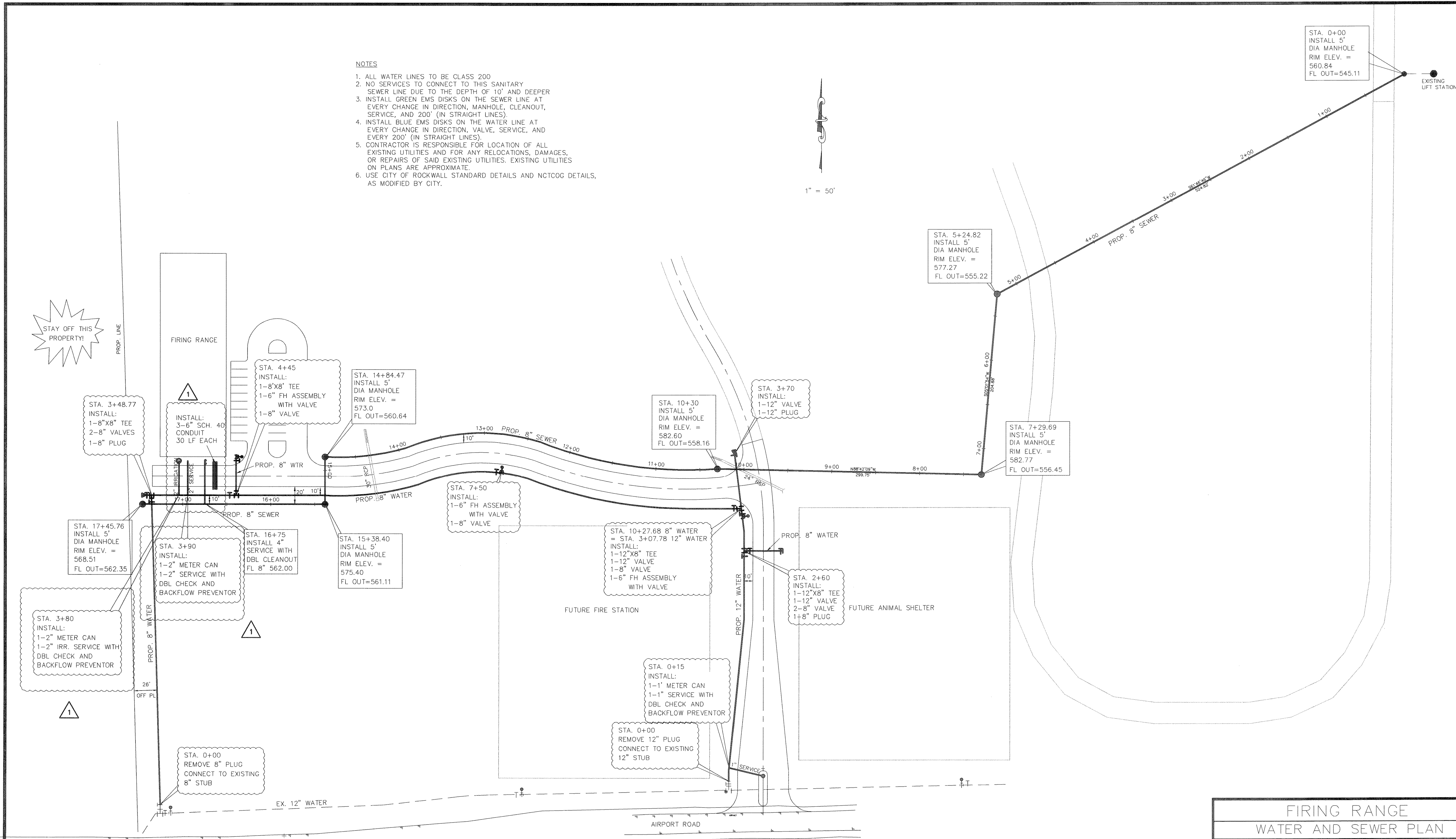
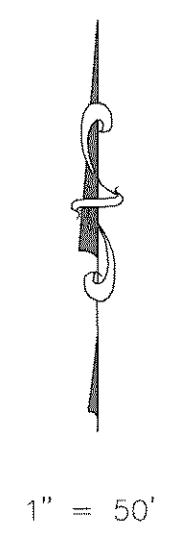
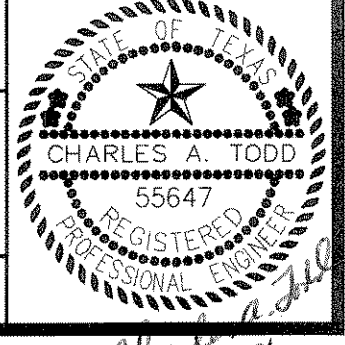


- NOTES**
1. ALL WATER LINES TO BE CLASS 200
 2. NO SERVICES TO CONNECT TO THIS SANITARY SEWER LINE DUE TO THE DEPTH OF 10' AND DEEPER
 3. INSTALL GREEN EMS DISKS ON THE SEWER LINE AT EVERY CHANGE IN DIRECTION, MANHOLE, CLEANOUT, SERVICE, AND 200' (IN STRAIGHT LINES).
 4. INSTALL BLUE EMS DISKS ON THE WATER LINE AT EVERY CHANGE IN DIRECTION, VALVE, SERVICE, AND EVERY 200' (IN STRAIGHT LINES).
 5. CONTRACTOR IS RESPONSIBLE FOR LOCATION OF ALL EXISTING UTILITIES AND FOR ANY RELOCATIONS, DAMAGES, OR REPAIRS OF SAID EXISTING UTILITIES. EXISTING UTILITIES ON PLANS ARE APPROXIMATE.
 6. USE CITY OF ROCKWALL STANDARD DETAILS AND NCTCOG DETAILS, AS MODIFIED BY CITY.



FIRING RANGE
WATER AND SEWER PLAN
ROCKWALL, TEXAS
CITY OF ROCKWALL
"THE NEW HORIZON"

REVISION NO.	REMARKS	DATE	DESIGNED:	THE SEAL APPEARING ON THIS DOCUMENT WAS AUTHORIZED BY
1	CHGD. SERVICES AND ADDED CONDUIT	7/31/06	A.J.W.	CHARLES A. TODD
			ACAD	NO. 55647 ON
			JOB NO.	DATE: 7/06 SHEET NO.



Charles A. Todd
8-31-06