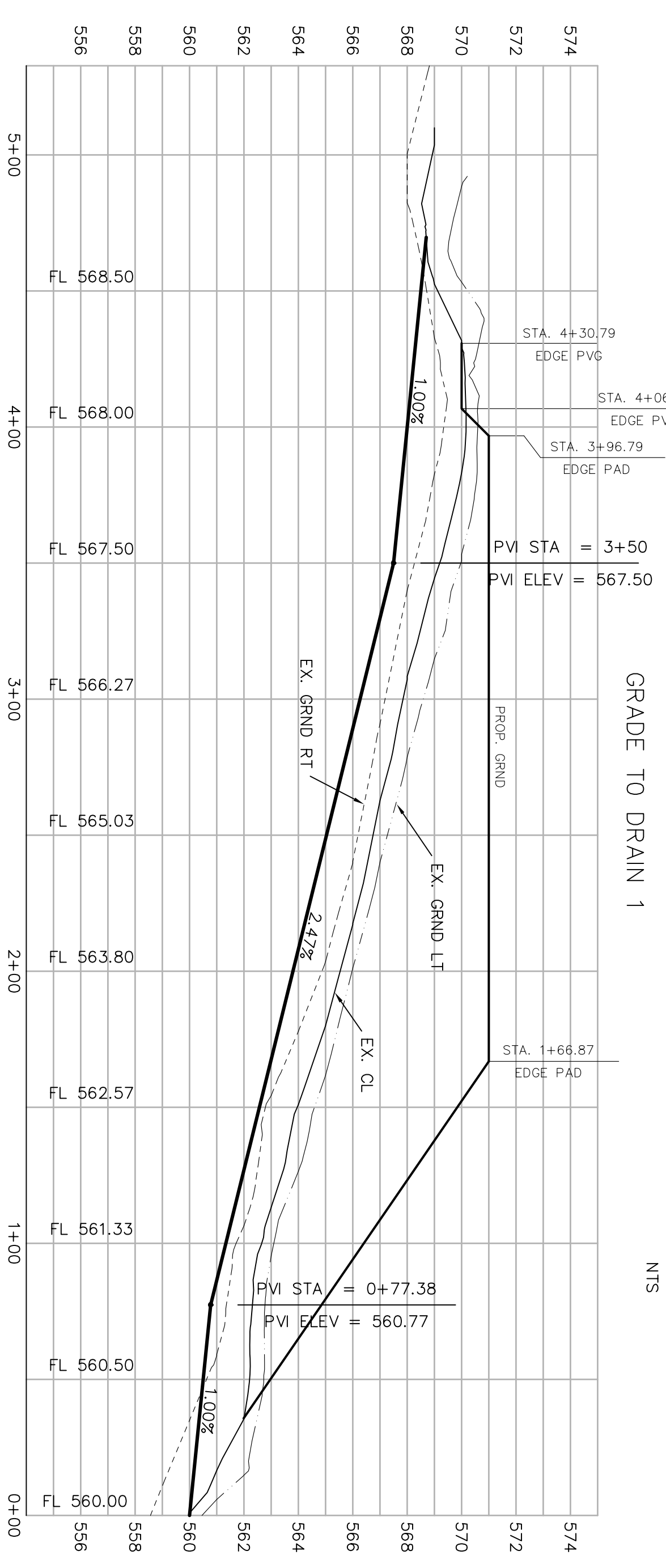
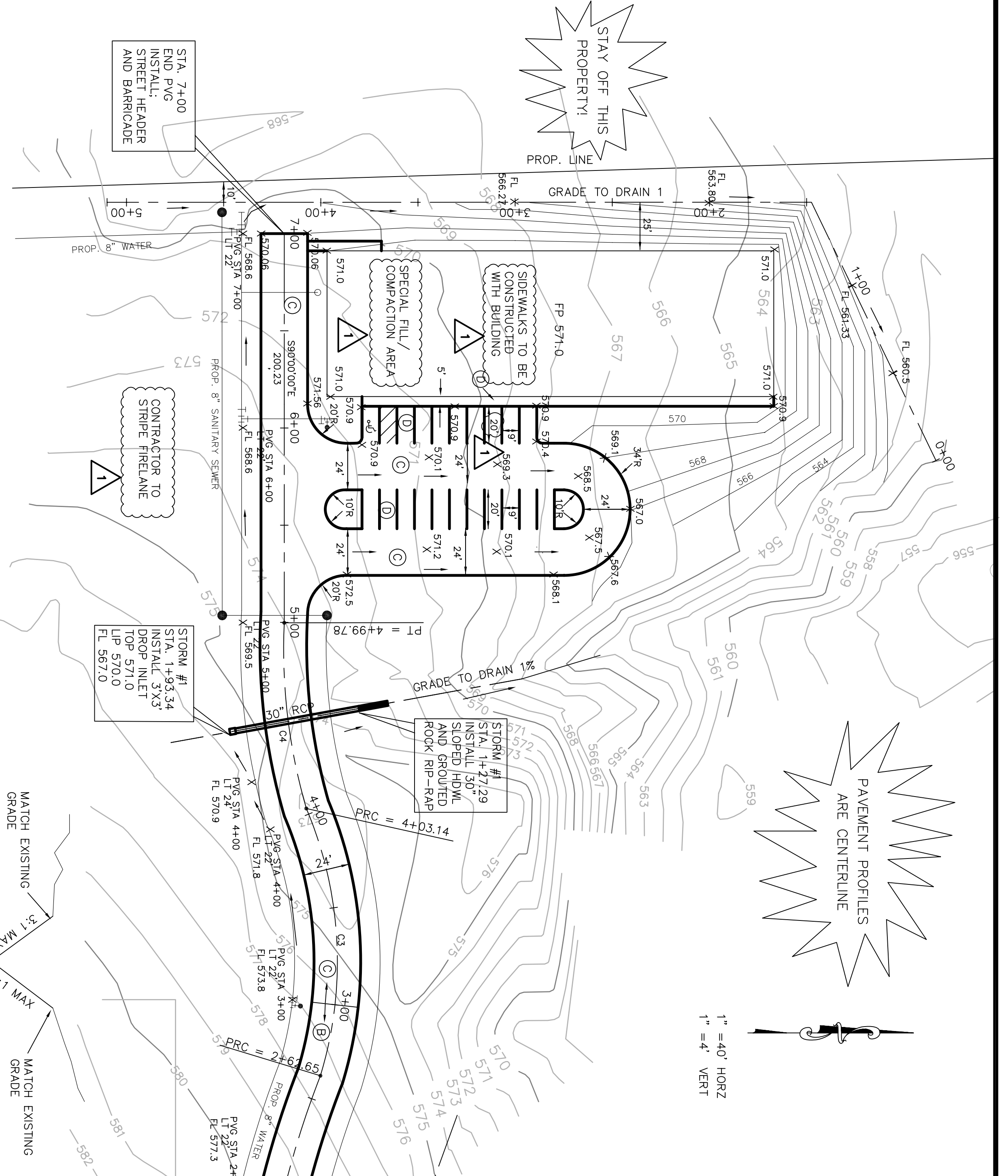


PAVEMENT PROFILES ARE CENTERLINE

STAY OFF THIS PROPERTY!



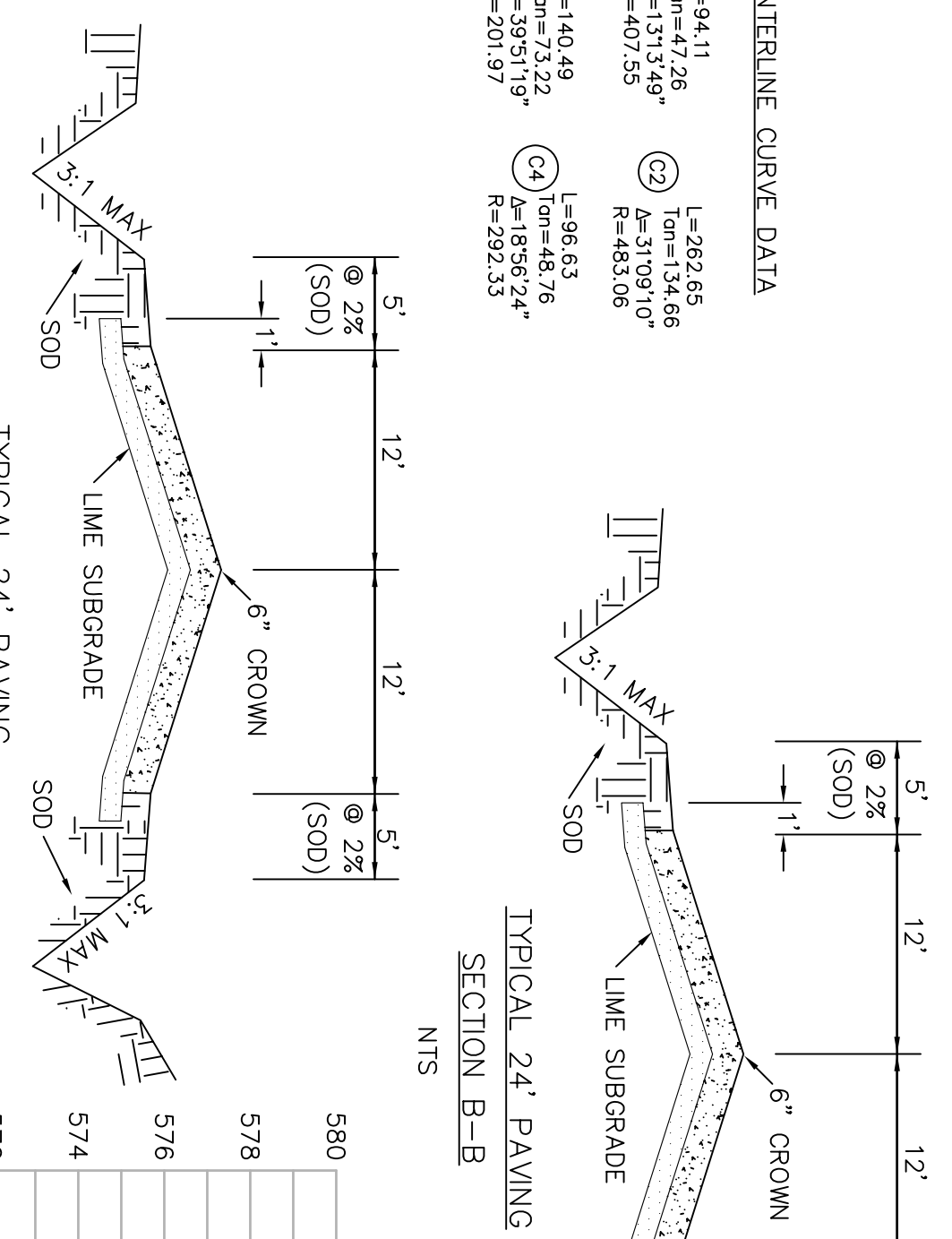
GRADE TO DRAIN 1
TYPICAL GRADE TO DRAIN SECTION NTS

PAVING SPECIFICATIONS

- (A) ENTRY DRIVE:
 - 7" - 3600 PSI CONCRETE
 - NO. 3 @ 18" CENTERS
 - 6" LIME SUBGRADE: LIME @ 32LBS/SY
 - 6" CURB - ENTRY MEDIAN ONLY
- (B) DRIVE PAST FIRE STATION:
 - 7" - 3600 PSI CONCRETE
 - NO. 3 @ 18" CENTERS
 - 6" LIME SUBGRADE: LIME @ 32LBS/SY
- (C) DRIVE/FIRELANE FOR FIRING RANGE:
 - 6" - 3600 PSI CONCRETE
 - NO. 3 @ 18" CENTERS
 - 6" LIME SUBGRADE: LIME @ 32LBS/SY
- (D) FIRING RANGE BARKING SPACES:
 - 5" - 3600 PSI CONCRETE
 - NO. 3 @ 18" CENTERS
 - 6" LIME SUBGRADE: LIME @ 32LBS/SY

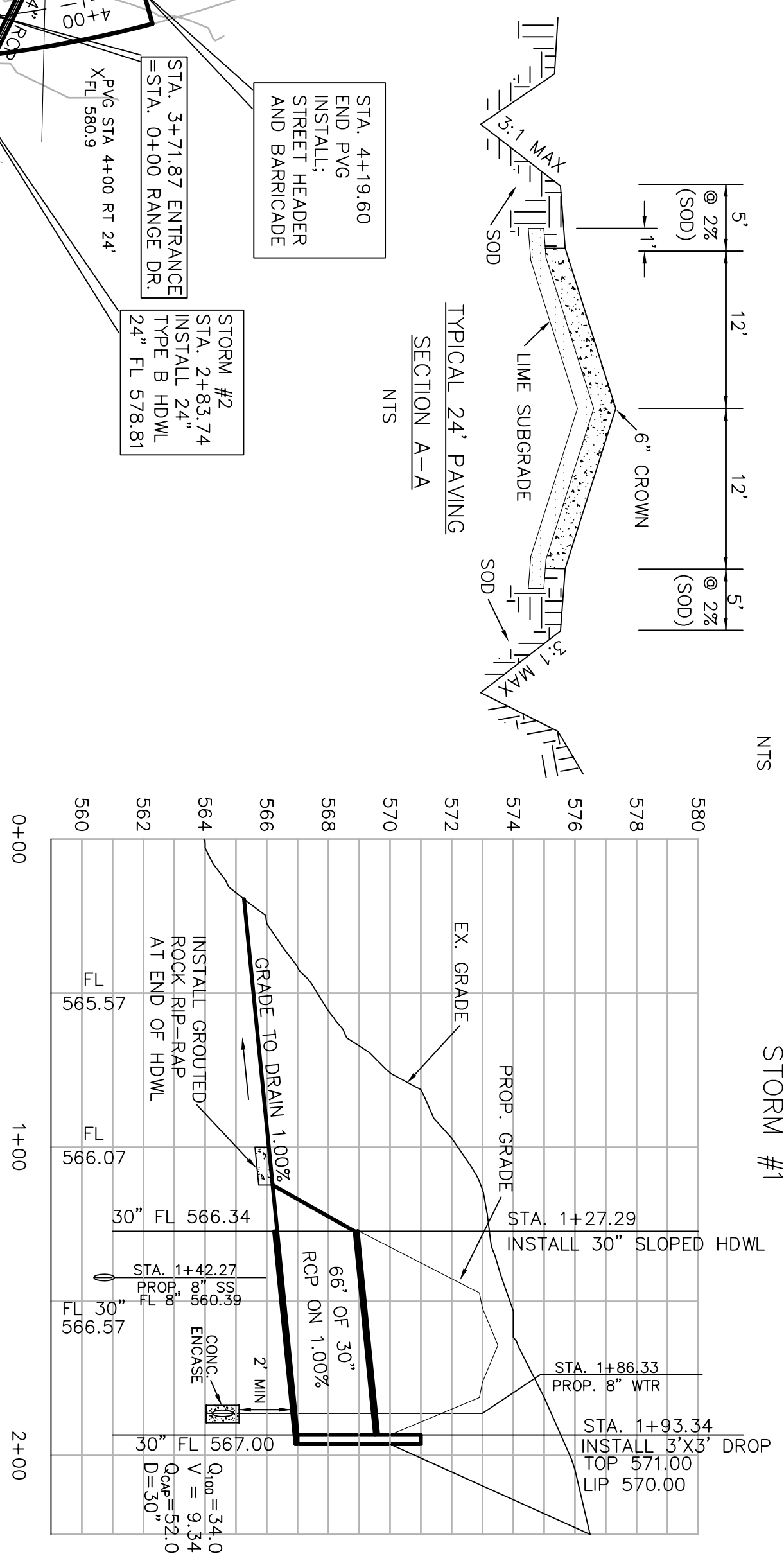
CENTERLINE CURVE DATA

(1)	L=94.11	TA=47.28°	RA=407.25'
(2)	L=263.65	TA=134.66°	RA=1310.91'
(3)	L=140.49	TA=73.22°	RA=251.97'
(4)	L=86.63	TA=48.76°	RA=159.72'

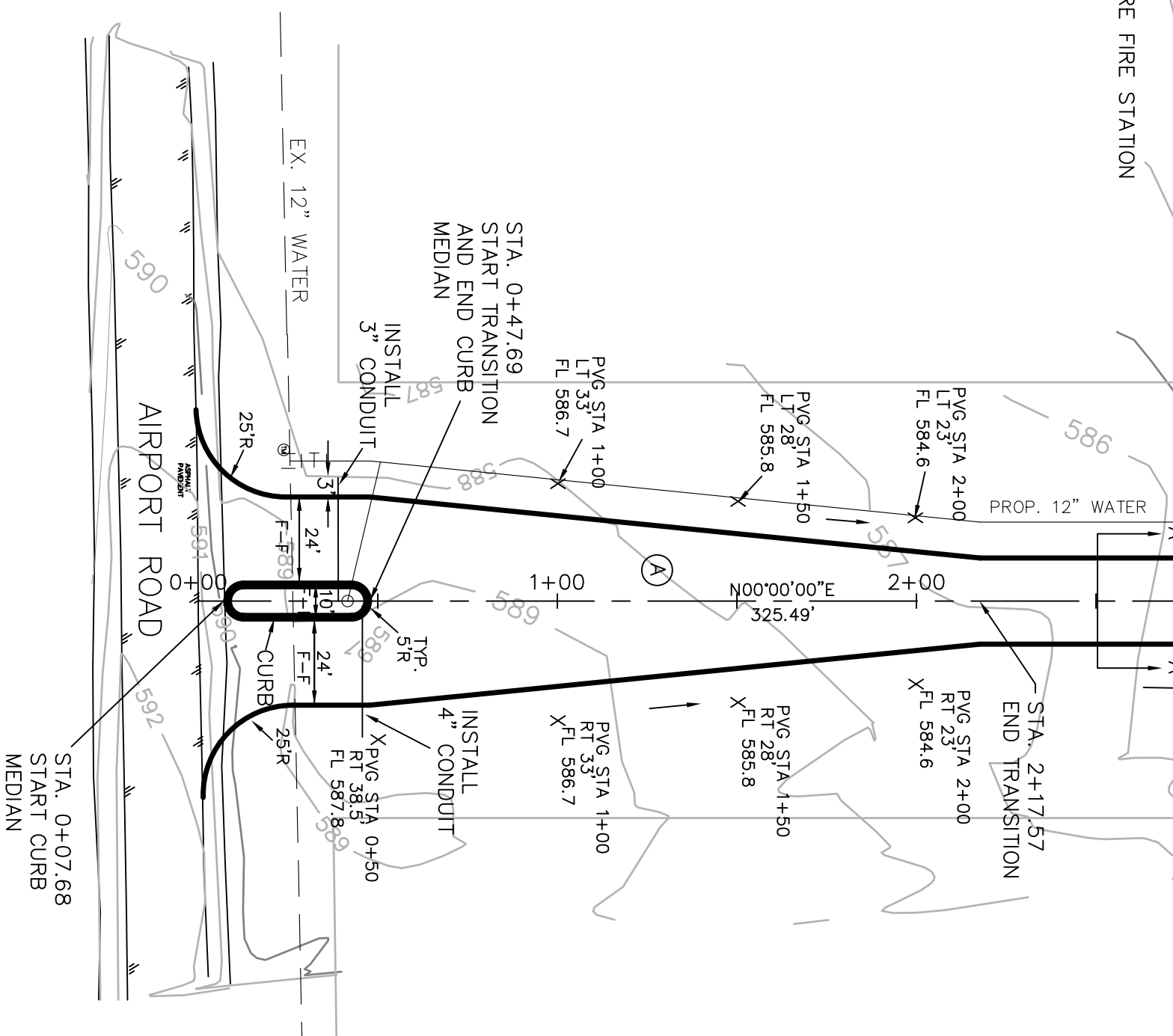


TYPICAL 24' PAVING SECTION A-A NTS

TYPICAL 24' PAVING SECTION B-B NTS



STORM #2



FIRING RANGE GRADING AND PAVING

ROCKWALL, TEXAS
"THE NEW HORIZON"

REVISION NO. 1	REMARKS: PARKING SPACES, STRIPING, AND PAD AREA	DATE: 7/31/06
DESIGNED BY: A.J.W.	THE SEAL APPEARING ON THIS DRAWING IS VALID ONLY IF ISSUED BY CHARLES A. TROD TEXAS P.E. NO. 55647 ON	
DRAWN BY: ACAD	DATE: 7/06	SHEET NO.



AS-BUILTS