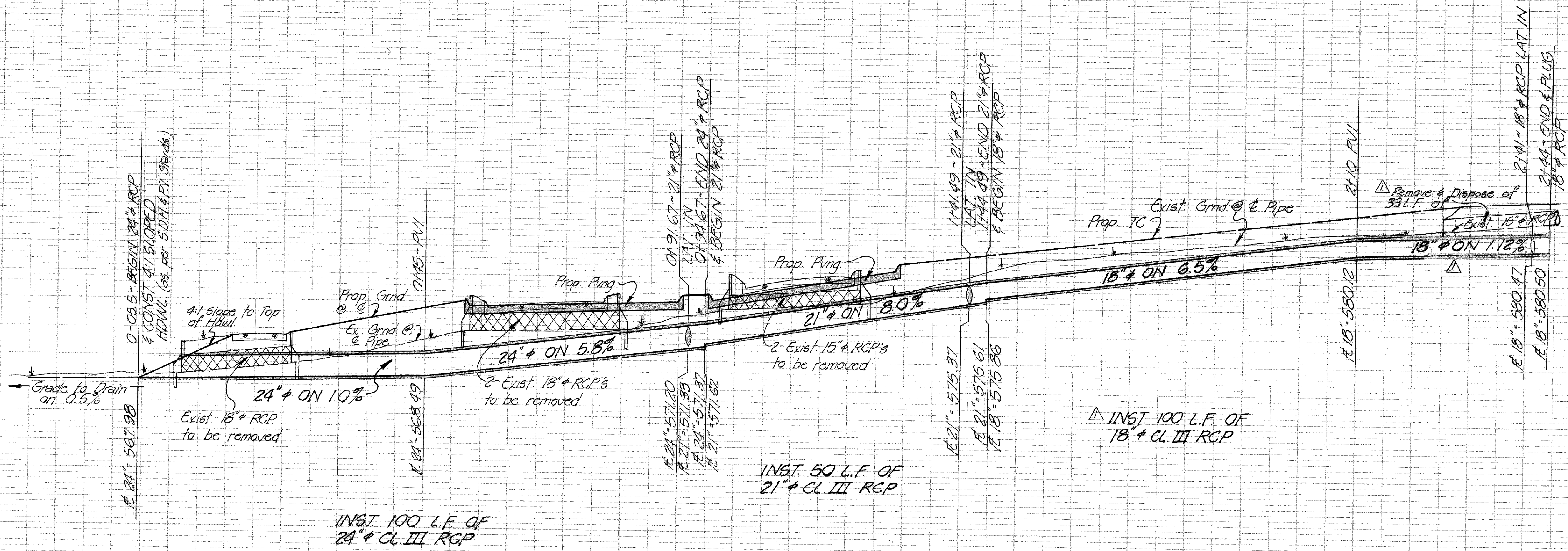


580  
575  
570  
565

585  
580  
575  
570  
565



B.M. ~ R.R. Spike in Power Pole @ the S.W. Corner of Rusk Street & West Street.  
ELEV. = 585.03

**STORM SEWER PROFILE**  
**ROCKWALL COUNTY LIBRARY**  
**ROCKWALL, TEXAS**



REVISION NO.	REMARKS	DATE
1	Extended 18" RCP-19 L.F. & Remove Exist. 15" RCP	12/6/91

DESIGNED:	B.W.H.	SCALE:	1"=10'H. & 1"=5'V.
DRAWN:	B.W.H.	APPROVED:	<i>[Signature]</i>
JOB NO.:	91005	DATE:	9/91
		SHEET NO.:	4/4

