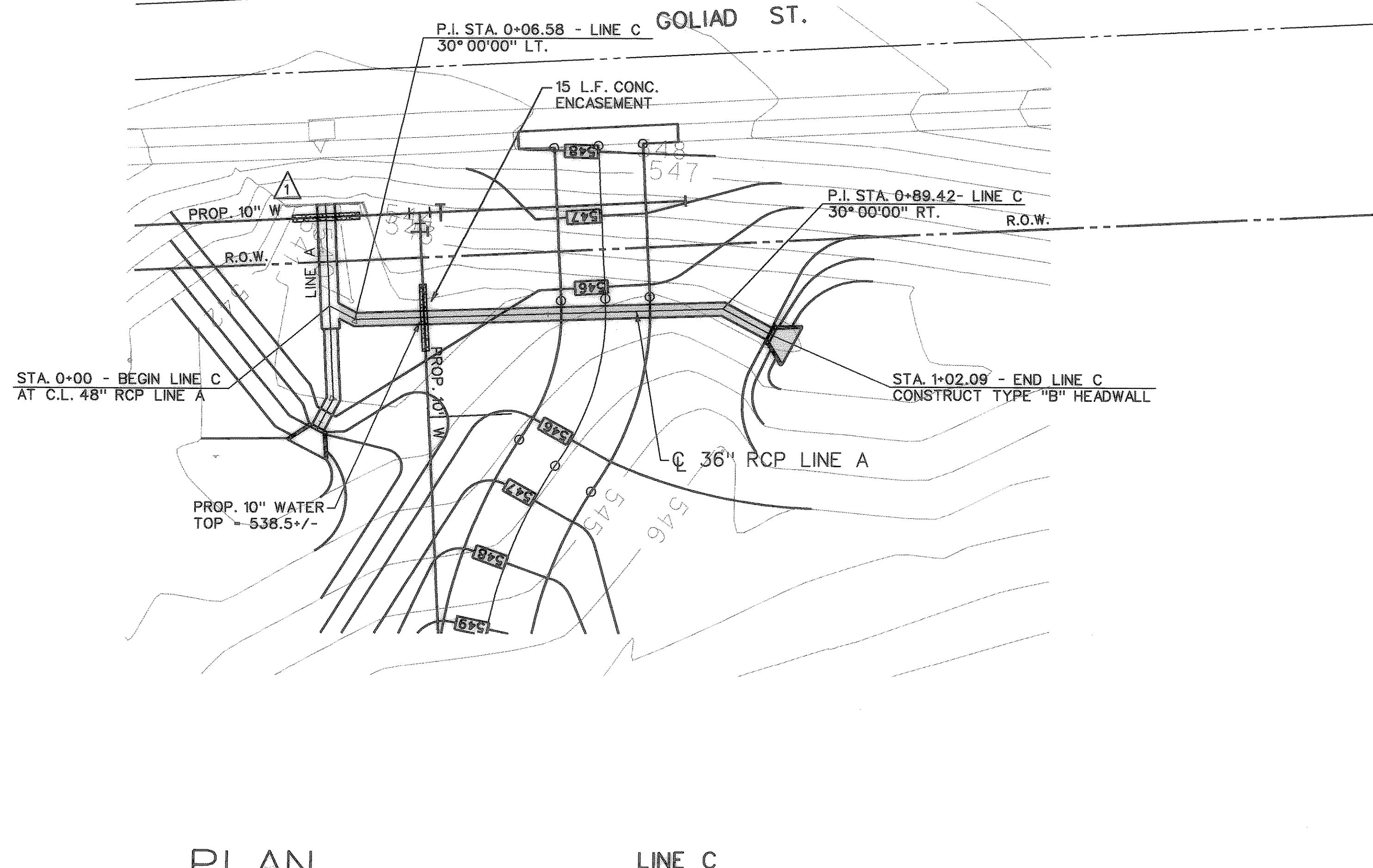
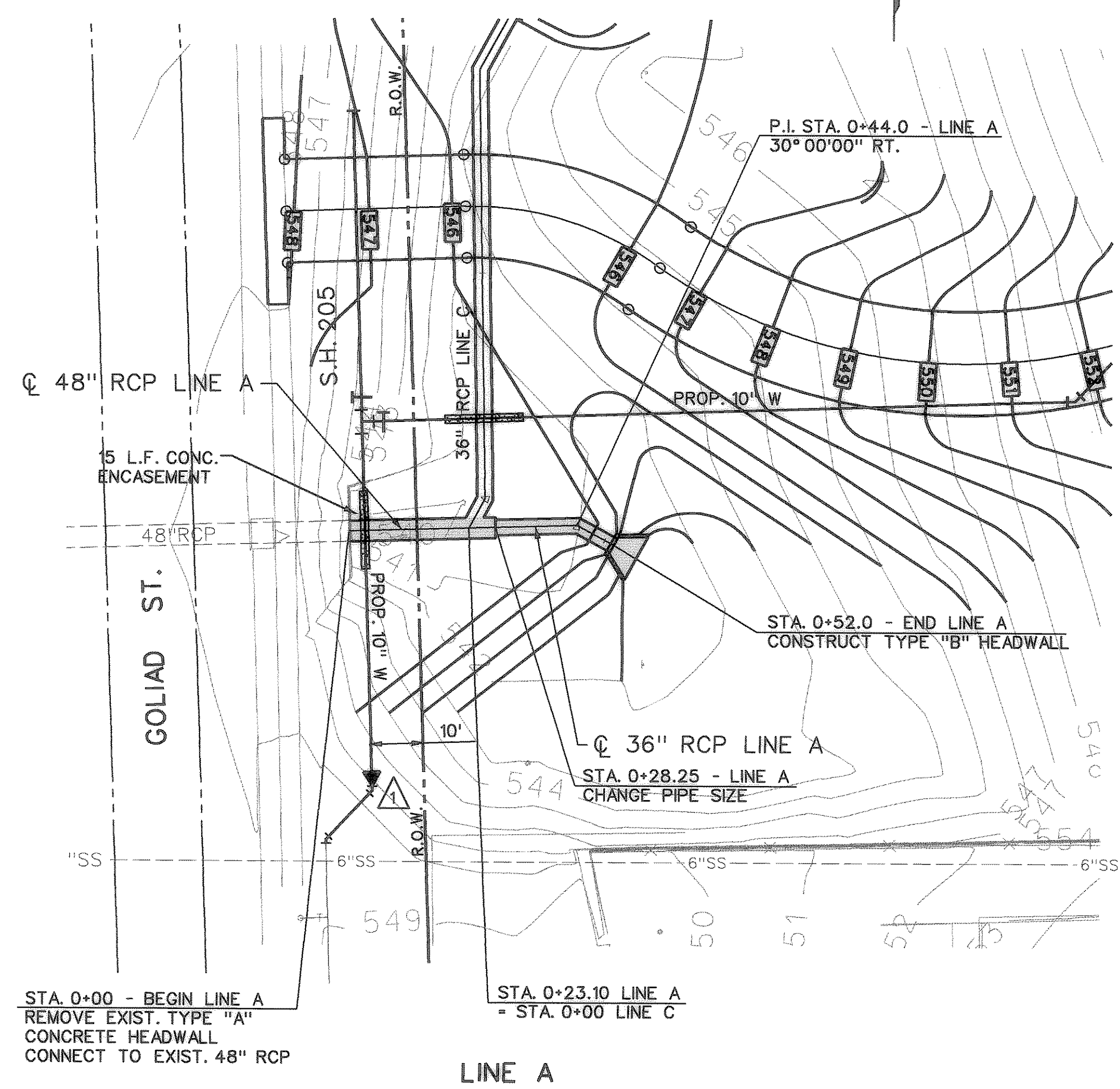


NOTE:
 CONTRACTOR SHALL FIELD VERIFY THE LOCATION AND DEPTH OF ALL EXISTING UTILITIES (SHOWN ON PLANS OR NOT) PRIOR TO CONSTRUCTION. IF FIELD CONDITIONS DIFFER SIGNIFICANTLY FROM LOCATIONS SHOWN ON PLANS, THE CONTRACTOR SHALL CONTACT THE ENGINEER PRIOR TO PROCEEDING WITH CONSTRUCTION. R-DELTA ENGINEERS, INC. WILL NOT BE RESPONSIBLE FOR ANY WORK BY THE CONTRACTOR NEGLECTING TO LOCATE THESE UTILITIES.

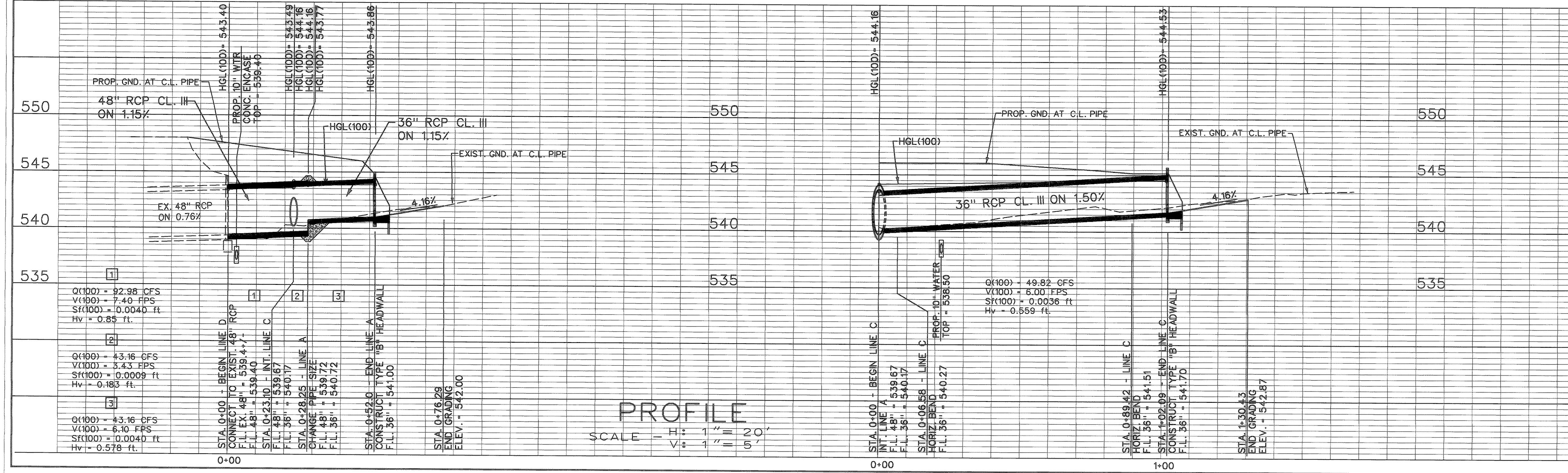
HORIZONTAL ALIGNMENT DATA			
STA.	NORTHING	EASTING	DESCRIPTION
LINE A			
0+00	5057.86	4548.02	POB
0+44.00	5059.10	4592.00	P. I. RT.
0+52.00	5055.30	4599.04	POE
LINE C			
0+00	5058.51	4571.11	POB
0+06.58	5064.30	4574.24	P. I. LT.
0+89.42	5147.13	4572.89	P. I. RT.
1+02.09	5158.20	4579.05	POE
LATERAL C-1			
0+00	5086.15	4573.88	POB
0+05.83	5089.15	4578.88	POE



PLAN
 SCALE: 1" = 20'

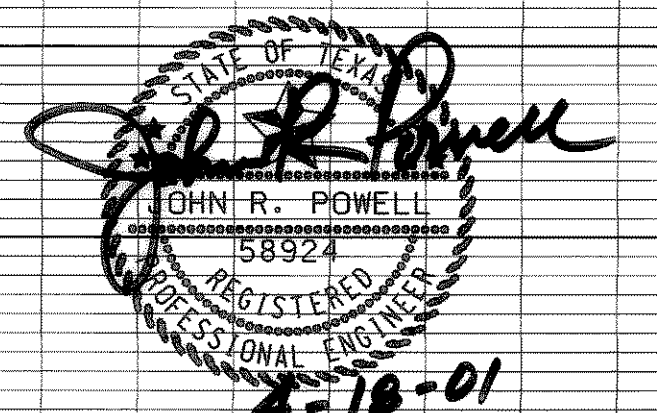
AS-BUILT PLANS
 NOTE: THE INTENT OF THE OWNER AND ENGINEER WAS TO CONSTRUCT THESE IMPROVEMENTS IN ACCORDANCE WITH THESE PLANS AS APPROVED BY THE CITY OF ROCKWALL. THE UTILITIES AND GRADES WERE SET ON THE GROUND FOR CONSTRUCTION ACCORDING TO SAID PLANS AND THE CITY OF ROCKWALL INSPECTED THE CONSTRUCTION. THE OWNER OR ENGINEER DID NOT VERIFY LINES OR GRADES AFTER CONSTRUCTION.

BENCHMARK:
 FOUND GENERALLY AT THE NORTHWEST CORNER OF S. ALAMO ST. AND WEST WASHINGTON ST. AND LOCATED 4.60' EAST OF THE BACK OF THE CURB ALONG WEST SIDE OF S. ALAMO ST. CITY OF ROCKWALL SURVEY MONUMENT R012 ELEV. = 594.25



PROFILE
 SCALE - H: 1" = 20'
 V: 1" = 5'

04-02-01: WATER LINE RELOCATED TO 10' OFF S.H. 205 EAST R.O.W.



THE SEAL APPEARING ON THIS DOCUMENT WAS AUTHORIZED BY JOHN R. POWELL, P.E. 58924 ON FEBRUARY 12, 2001 ALTERATION OF A SEALED DOCUMENT WITHOUT PROPER NOTIFICATION TO THE RESPONSIBLE ENGINEER IS AN OFFENSE UNDER THE TEXAS ENGINEERING PRACTICE ACT.

STORM SEWER LINE A & LINE C

ROCKWALL CITY HALL COMPLEX

CITY OF ROCKWALL, TEXAS

R-DELTA ENGINEERS, INC.
 618 MAIN STREET GARLAND, TEXAS 75040
 Phone: 972-494-5651 WWW.RDELTA.COM

DESIGN: JRP/MDP	CHECK:	SCALE: AS SHOWN	SHEET
DRAWN: MDP	DATE: FEBRUARY 2001	RDE PROJECT: 98-755	C7 of 13