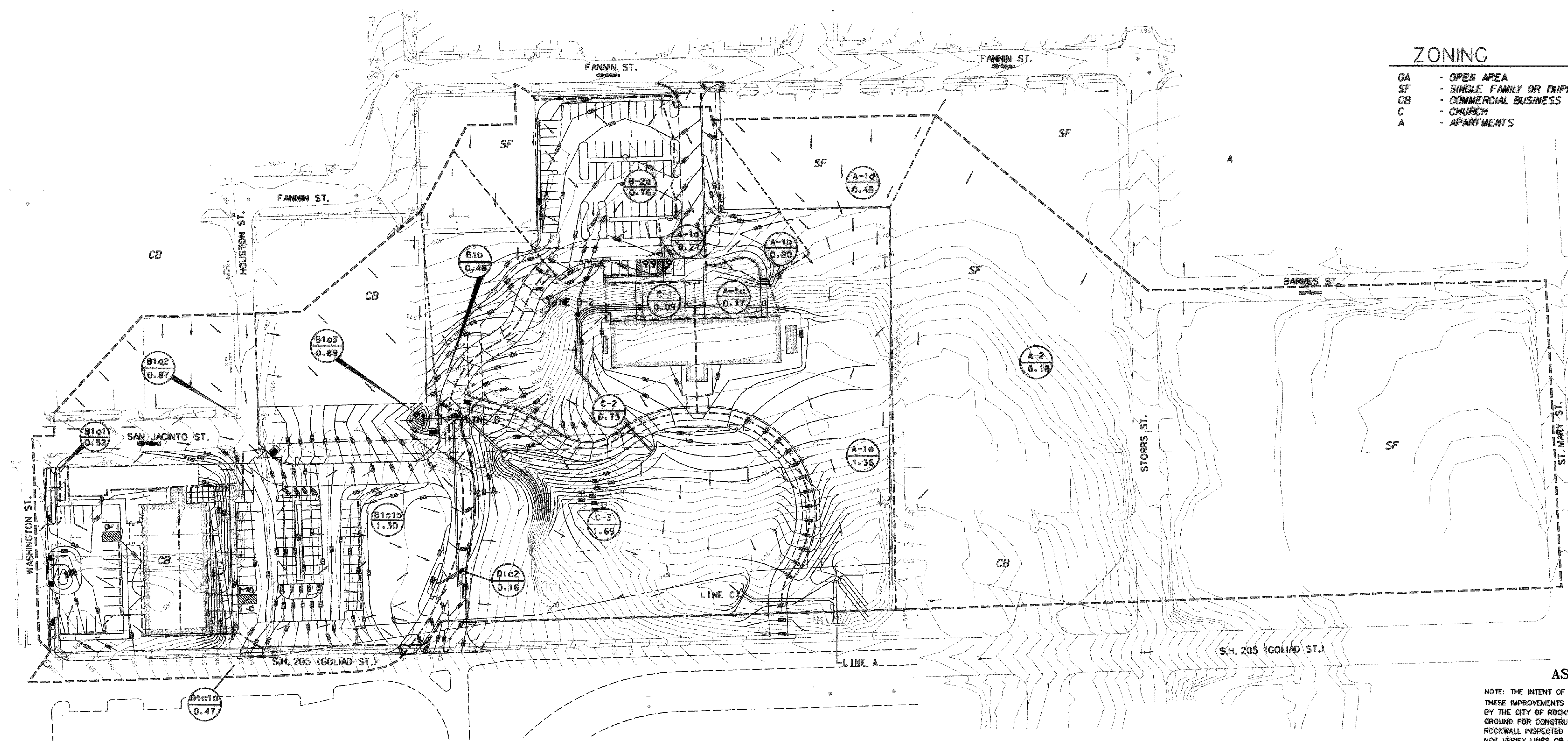


ZONING

- OA - OPEN AREA
- SF - SINGLE FAMILY OR DUPLEX
- CB - COMMERCIAL BUSINESS
- C - CHURCH
- A - APARTMENTS

LEGEND

- ↑ FLOW ARROW
- (D-15) DRAINAGE AREA
- 5.44 ACREAGE
- DRAINAGE DIVIDE
- SUB-DIVIDE



AS-BUILT PLANS

NOTE: THE INTENT OF THE OWNER AND ENGINEER WAS TO CONSTRUCT THESE IMPROVEMENTS IN ACCORDANCE WITH THESE PLANS AS APPROVED BY THE CITY OF ROCKWALL. THE UTILITIES AND GRADES WERE SET ON THE GROUND FOR CONSTRUCTION ACCORDING TO SAID PLANS AND THE CITY OF ROCKWALL INSPECTED THE CONSTRUCTION. THE OWNER OR ENGINEER DID NOT VERIFY LINES OR GRADES AFTER CONSTRUCTION.

INLET DESIGN CALCULATIONS

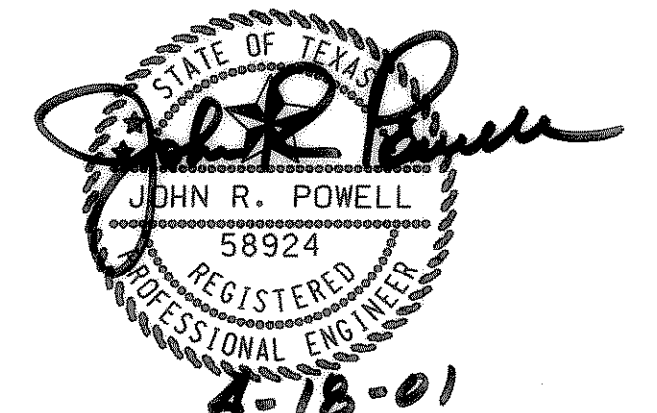
INLET NO.	C	Ca	I(100)	AREA	Q(100)	Q(STREET) S=0.005%	L-INLET CONDITION	Q(INLET) 1.0 cfs/ft GRADE 1.2 cfs/ft SUMP	Q(CARRY-OVER)
B-1b	0.58	1.25	8.4	0.48	2.92	8.12	5' SUMP	6.0	- 0 -
B-1c1	0.79	1.00	9.8	1.78	13.78	8.12	10' SUMP	12.0	- 0 -
B-1c2	0.90	1.00	9.8	0.16	1.41	8.12	5' SUMP	6.0	- 0 -
B-2	0.90	1.00	9.8	0.76	6.70	8.12	10' SUMP	12.0	- 0 -

RUNOFF CALCULATIONS

	AREA (AC)	C	Tc (MIN)	I(100)	Q(100)	COMMENT
A-1a	0.21	0.9	10	9.8	1.8	CHANNEL FLOW
A-1b	0.20	0.7	10	9.8	1.4	CHANNEL FLOW
A-1c	0.10	0.7	10	9.8	0.7	OFFSITE FROM THE EAST
A-1d	0.41	0.5	10	9.8	2.5	OVERLAND FLOW
A-1e	1.36	0.5	10	9.8	8.3	OVERLAND FLOW
A-1 T	2.28	0.53	10	8.4	12.6	TO INLET
A-2 T	6.18	0.5	10	7.9	30.5	OFFSITE FROM THE SOUTH
A-TOTAL	8.46	0.51	22	8.04	43.16	LINE "A"
B-1a1	0.52	0.9	10	9.8	4.6	
B-1a2	0.87	0.8	10	9.8	6.8	
B-1a3	0.89	0.5	10	9.8	5.4	
B-1a T	2.28	0.61	35	6.30	10.84	SUMP INLET & LINE "B-1a"
B-1b	0.48	0.58	10	9.8	3.3	OVERLAND FLOW
B-1c1a	0.47	0.90	10	9.8	4.1	OFFSITE FROM GOLIAD ST.
B-1c1b	1.31	0.75	10	9.8	9.8	OVERLAND FLOW
B-1c1 T	1.78	0.79	15	9.8	13.78	
B-1c2 T	0.16	0.90	10	9.8	1.41	
B-1c T	1.94	0.80	20	9.8	13.02	LINE "B-1c" SD
B-1T01	4.76	0.769	35	6.3	23.06	LINE "B-1" SD
B-2T01	0.76	0.90	10	9.8	6.7	LINE "B-2" SD
B-TOTAL	5.52	0.80	35	6.3	27.37	LINE "B-1c" SD
C-1	0.09	0.7	10	9.8	0.62	CHANNEL FLOW
C-2	0.73	0.5	10	9.8	4.47	CHANNEL FLOW
C-3	1.69	0.5	10	9.8	10.35	OVERLAND FLOW
C-TOTAL	2.51	0.52	15	9.8	15.99	
B/C-TOTAL	7.97	0.595	204	9.8	49.82	LINE "C"
TOTAL	16.43	0.550	25	7.6	85.87	CONNECT TO EX. CULVERT

NOTE: AREAS MULTIPLIED BY FACTOR OF 1.25 FOR FULLY DEVELOPED CONDITIONS WHEN "C" < 0.7.

BENCHMARK:
FOUND GENERALLY AT THE
NORTHWEST CORNER OF S. ALAMO ST.
AND WEST WASHINGTON ST. AND
LOCATED 4.60' EAST OF THE BACK
OF THE CURB ALONG WEST SIDE OF
S. ALAMO ST. CITY OF
ROCKWALL SURVEY MONUMENT RO12
ELEV. = 594.25



THE SEAL APPEARING ON THIS DOCUMENT WAS AUTHORIZED BY JOHN R. POWELL, P.E. 58924 ON FEBRUARY 12, 2001. ALTERATION OF A SEALED DOCUMENT WITHOUT PROPER NOTIFICATION TO THE RESPONSIBLE ENGINEER IS AN OFFENSE UNDER THE TEXAS ENGINEERING PRACTICE ACT.

DRAINAGE AREA MAP

ROCKWALL CITY HALL COMPLEX

CITY OF ROCKWALL, TEXAS

R-DELTA ENGINEERS, INC.
618 MAIN STREET GARLAND, TEXAS 75040
Phone (972) 944-5031 WWW.RDELTA.COM

DESIGN: JRP	CHECK:	SCALE: AS SHOWN	SHEET
DRAWN: JCW/MDP	DATE: FEBRUARY 2001	RDE PROJECT: 98-755	C6 OF 13