

PARKING REQUIREMENTS:	REQUIRED	PROVIDED
ENTIRE COMPLEX - DAYTIME USE	117 SPACES	127 SPACES
ASSEMBLY - 51		
OFFICE - 66		
ENTIRE COMPLEX - NIGHTTIME USE	80 SPACES	127 SPACES
ASSEMBLY - 69		
OFFICE - 11		

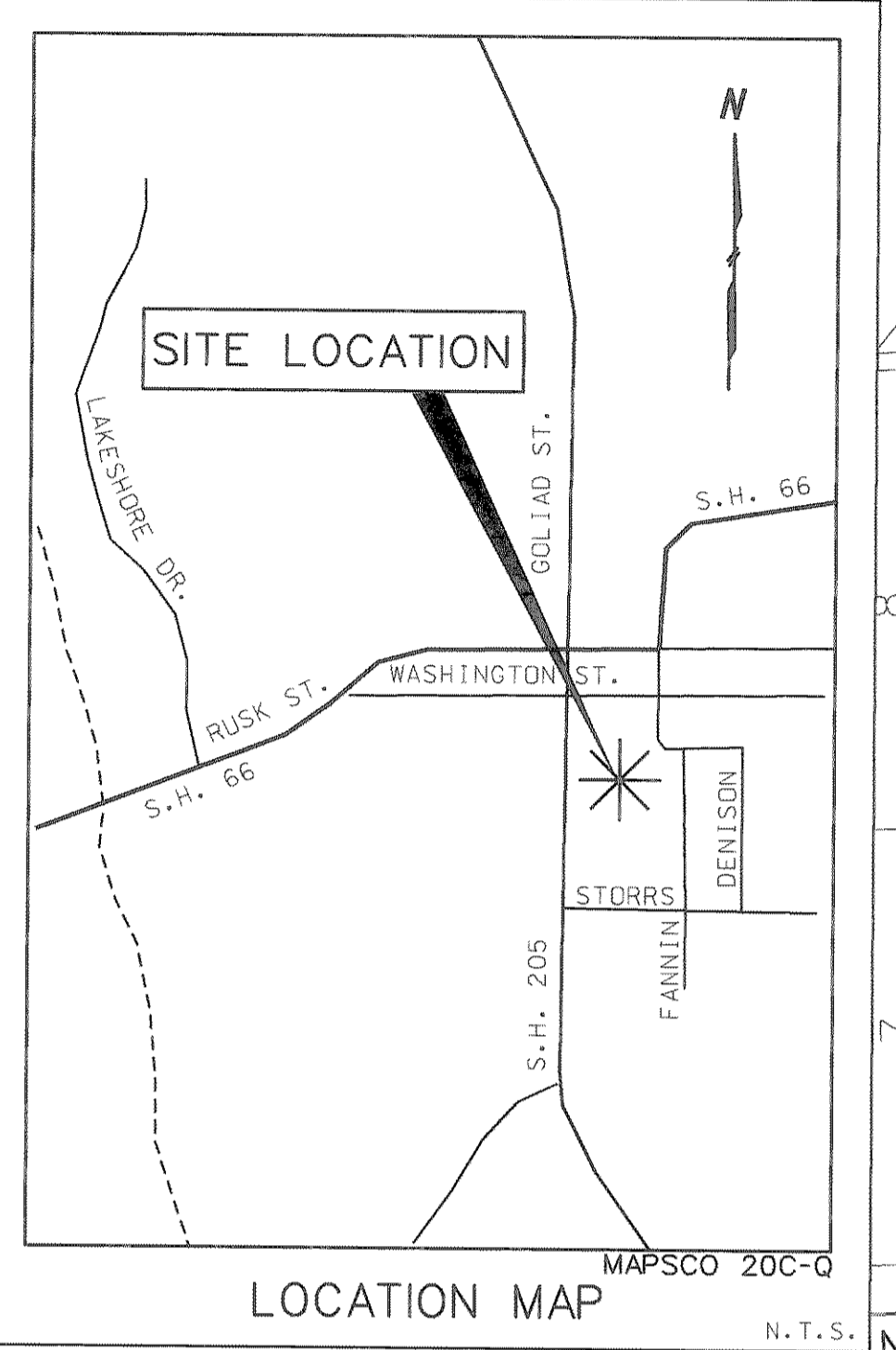
THE PARKING DEMANDS AT THE MUNICIPAL COMPLEX WILL NOT BE CONSISTENT AT ALL TIMES OF THE DAY IN THE CITY HALL. THE OFFICES WILL ONLY BE OCCUPIED IN THE DAYTIME AND THE COUNCIL CHAMBER WILL ONLY BE OCCUPIED AT NIGHT. AT THE COMMUNITY CENTER, THE DEVELOPMENTAL SERVICES PORTION WILL ONLY BE OCCUPIED IN THE DAYTIME WHILE THE REST OF THE BUILDING COULD BE USED AT ANY TIME OF DAY.

EAW BASELINE COORDINATE CHART		
POINT No.	NORTHING	EASTING
001	5450.95	4770.10
002	5417.95	4761.29
003	5395.68	4751.82
004	5365.45	4733.57
005	5283.64	4737.10
006	5275.63	4742.93
007	5219.16	4761.14
008	5196.16	4761.87
009	5116.90	4613.70
010	5130.66	4569.88
011	5129.54	4535.33

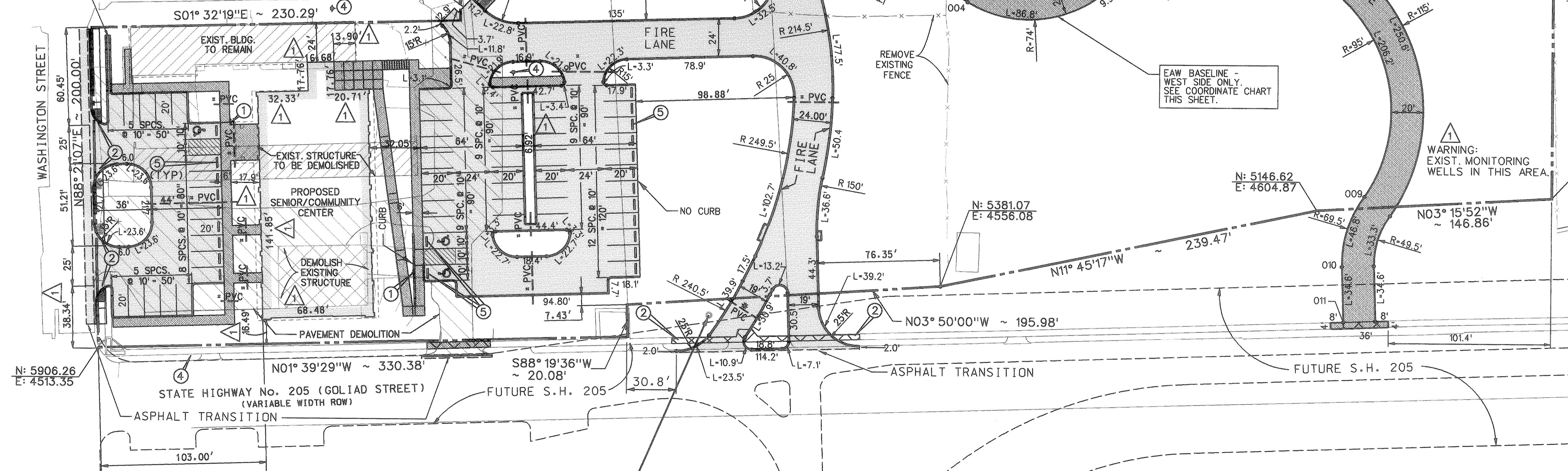
LEGEND

- PROPOSED CONCRETE PAVING
- PROPOSED SIDEWALK
- PROPOSED TREE
- 2" AND 4" SCH 40 PVC CONDUIT SLEEVES FOR FUTURE ELECTRICAL AND IRRIGATION. CONDUIT SHALL EXTEND A MINIMUM OF 2'-0" BEYOND EDGE OF PAVING (TYP) AT EACH LOCATION. SEE NOTE #10 THIS SHEET

SCALE: 1" = 40'



CONCRETE FLUME SEE GRADING PLAN SHEET 1 OF 3.



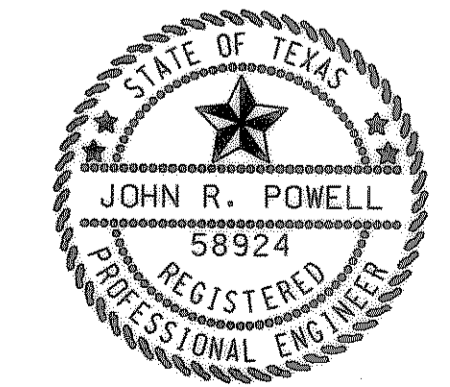
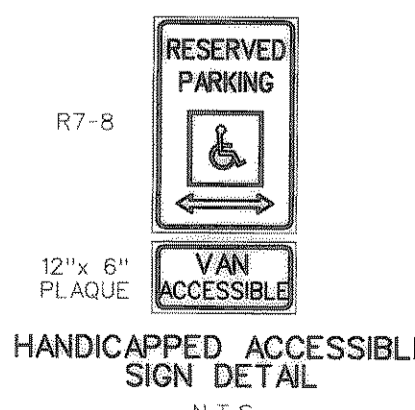
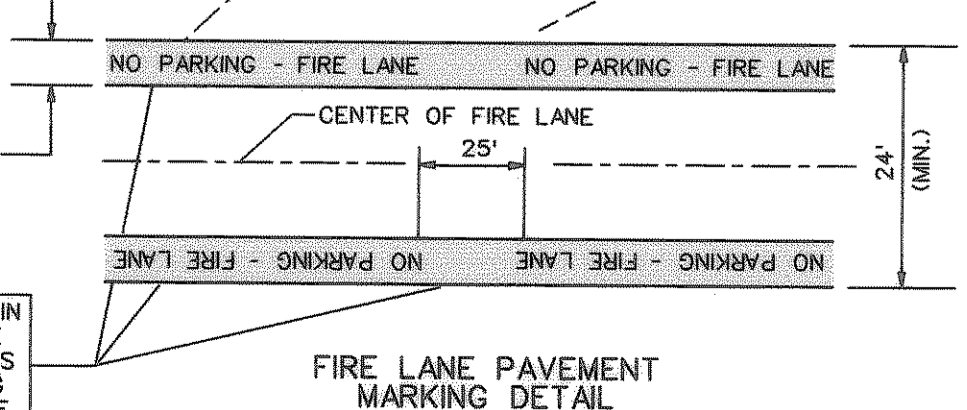
- 1 INSTALL VERTICALLY MOUNTED HANDICAPPED ACCESSIBLE SIGN. BOTTOM OF SIGN LETTERING MUST BE 60" (MIN) ABOVE PAVEMENT SURFACE. SIGN MUST COMPLY WITH THE TEXAS ACCESSIBILITY STANDARDS (TAS) OF THE ARCHITECTURAL BARRIERS ACT (SEE DETAIL THIS SHEET).
- 2 INSTALL BARRIER FREE RAMP (SEE NOTE #8 BELOW)
- 20 INSTALL CURB LAYDOWN FOR WHEELCHAIR ACCESS (SEE GRADING PLAN).
- 3 FIRE LANE PAVEMENT MARKINGS SHALL BE PAINTED LINES OF RED TRAFFIC PAINT, 6" WIDE, TO SHOW THE EXACT BOUNDARY LINES OF THE FIRE LANE. THESE BOUNDARY LINES MAY BE ON THE CURB OR FLAT PAVEMENT. THE LINES SHALL BE MARKED BY PAINTED 4" HIGH LETTERING USING A 1" WIDE STROKE OF WHITE TRAFFIC PAINT ON THE CONTRASTING RED BACKGROUND STATING "NO PARKING - FIRE LANE". THIS MARKING SHALL BE PLACED AT 25' INTERVALS ALONG EACH BOUNDARY LINE -SEE DETAIL THIS SHEET.
- 4 PROPOSED FIRE HYDRANT - SEE WATER MAIN LAYOUT.
- 5 6" x 6" PRECAST CONCRETE WHEEL STOPS (TYPICAL)

AS-BUILT PLANS

NOTE: THE INTENT OF THE OWNER AND ENGINEER WAS TO CONSTRUCT THESE IMPROVEMENTS IN ACCORDANCE WITH THESE PLANS AS APPROVED BY THE CITY OF ROCKWALL. THE UTILITIES AND GRADES WERE SET ON THE GROUND FOR CONSTRUCTION ACCORDING TO SAID PLANS AND THE CITY OF ROCKWALL INSPECTED THE CONSTRUCTION. THE OWNER OR ENGINEER DID NOT VERIFY LINES OR GRADES AFTER CONSTRUCTION.

- NOTES:
- 1) ALL PAVING DIMENSIONS TO FACE OF CURB.(F-F)
 - 2) ALL PAVING CURB RADIARE 2' UNLESS OTHERWISE NOTED (SEE DIMENSION CONTROL PLAN).
 - 3) ALL BUILDING DIMENSIONS TO OUTSIDE (O.S.) OF GRADE BEAM.
 - 4) SEE ARCHITECTURAL PLANS FOR EXACT BUILDING DIMENSIONS AND ASSOCIATED SIDEWALKS, RAMPS AND BRIDGES.
 - 5) ALL PARKING LOT PAVING SHALL BE 5" (MIN) THICK, 3500 PSI REINFORCED CONCRETE. ALL FIRE LANE PAVING SHALL BE 6" (MIN) THICK, 3500 PSI REINFORCED CONCRETE. ALL SIDEWALK PAVING SHALL BE 4" (MIN) THICK REINFORCED CONCRETE. CONCRETE MIX SHALL BE 6-SACK FOR MACHINE FINISH AND 6-1/2-SACK FOR HAND FINISH. ALL CONCRETE REINFORCING SHALL BE NO. 3 BARS SPACED 24-INCHES CENTER TO CENTER, EACH WAY. ALL PAVING SHALL COMPLY WITH THE CITY OF ROCKWALL STANDARD THICKNESS, REINFORCING, MATERIALS, DETAILS AND JOINT SPACING.
 - 6) PAVEMENT AND BUILDING SUBGRADE PREPARATION SHALL COMPLY WITH ALL RECOMMENDATIONS CONTAINED IN PROJECT GEOTECHNICAL REPORT BY OTHERS.
 - 7) LANDSCAPING AND IRRIGATION DETAILS SHOWN ELSEWHERE.
 - 8) SIDEWALKS AND BARRIER FREE RAMPS MUST BE CONSTRUCTED ALONG WITH THE CONSTRUCTION OF THIS PROJECT USING CITY OF ROCKWALL STD. DETAIL DRAWINGS.
 - 9) IT IS THE RESPONSIBILITY OF THE CONTRACTOR TO PROTECT ALL PUBLIC UTILITIES IN THE CONSTRUCTION OF THIS PROJECT.
 - 10) CONTRACTOR SHALL INSTALL BOTH 2" AND 4" SCH. 40 PVC CONDUIT SLEEVES AT EACH LOCATION FOR ELECTRICAL AND LANDSCAPE IRRIGATION AS SHOWN ON THIS PLAN UNLESS SHOWN OTHERWISE ON LANDSCAPE IRRIGATION PLANS.

- 1 04-02-01: REVISE REQUIRED PARKING SPACES IN CHART. ADD MONITORING WELL NOTE. ADD COORDINATE TABLE FOR FIRE LANE. ADD CORRECTED DIMENSIONS TO BUILDINGS.
- 2 5-08-01: REVISE ENTRANCE DRIVE LOCATION AT SH205 AS REQUESTED BY TXU ELECTRIC. WIDEN FIRE LANE TO 20' AS DIRECTED BY CITY OF ROCKWALL. REVISE BOUNDARY CALLS TO MATCH PLAT.



THE SEAL APPEARING ON THIS DOCUMENT WAS AUTHORIZED BY JOHN R. POWELL, P.E. 58924 ON FEBRUARY 12, 2001. ALTERATION OF A SEALED DOCUMENT WITHOUT PROPER NOTIFICATION TO THE RESPONSIBLE ENGINEER IS AN OFFENSE UNDER THE TEXAS ENGINEERING PRACTICE ACT.

SITE PLAN			
ROCKWALL CITY HALL COMPLEX			
CITY OF ROCKWALL, TEXAS			
R-DELTA ENGINEERS, INC. 618 MAIN STREET GARLAND, TEXAS 75040 Phone: (972) 974-5051 WWW.RDELTA.COM			
DESIGN: JRP/RHA	CHECK: FAP	SCALE: AS SHOWN	SHEET
DRAWN: MDP	DATE: FEBRUARY 2001	RDE PROJECT: 98-755	C2 OF 13