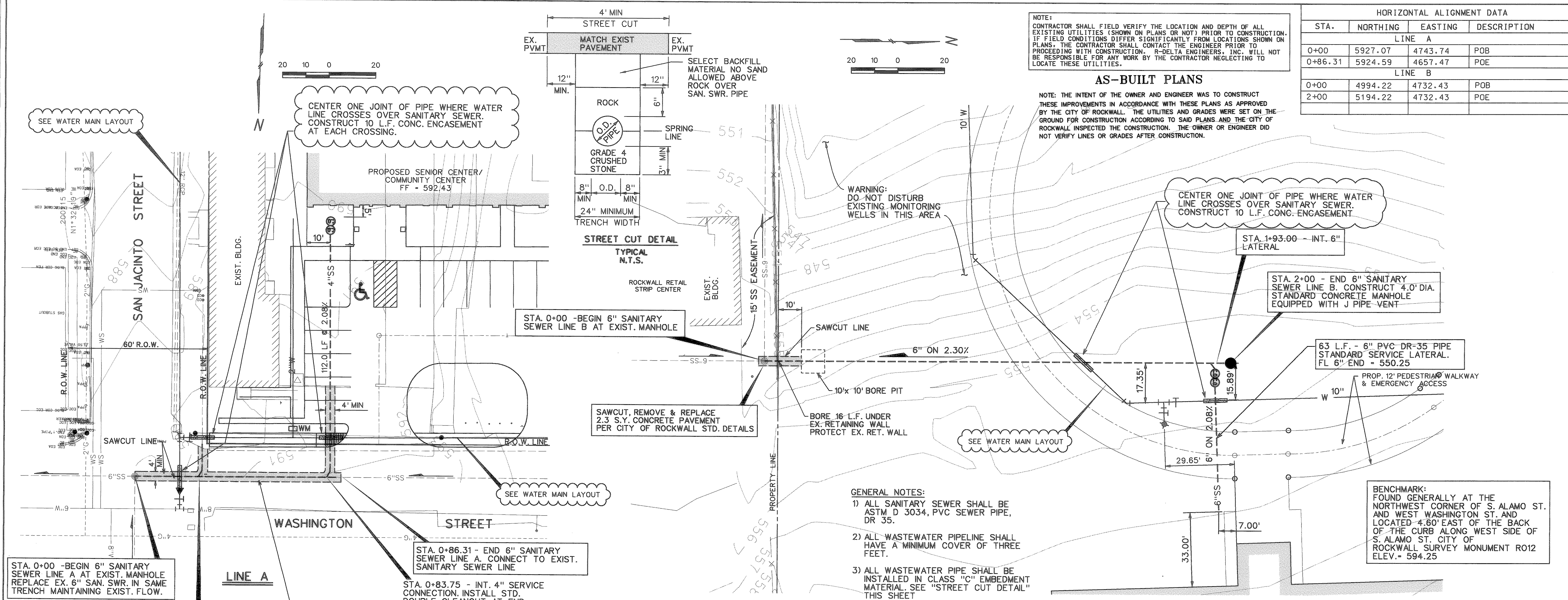


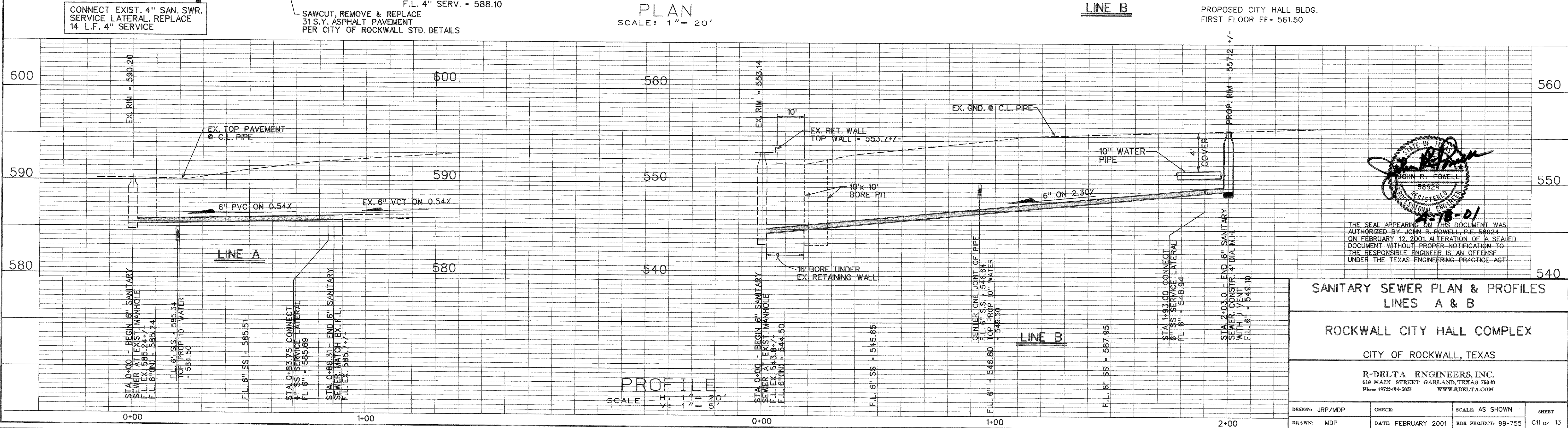
HORIZONTAL ALIGNMENT DATA			
STA.	NORTHING	EASTING	DESCRIPTION
LINE A			
0+00	5927.07	4743.74	POB
0+86.31	5924.59	4657.47	POE
LINE B			
0+00	4994.22	4732.43	POB
2+00	5194.22	4732.43	POE

NOTE: CONTRACTOR SHALL FIELD VERIFY THE LOCATION AND DEPTH OF ALL EXISTING UTILITIES (SHOWN ON PLANS OR NOT) PRIOR TO CONSTRUCTION. IF FIELD CONDITIONS DIFFER SIGNIFICANTLY FROM LOCATIONS SHOWN ON PLANS, THE CONTRACTOR SHALL CONTACT THE ENGINEER PRIOR TO PROCEEDING WITH CONSTRUCTION. R-DELTA ENGINEERS, INC. WILL NOT BE RESPONSIBLE FOR ANY WORK BY THE CONTRACTOR NEGLECTING TO LOCATE THESE UTILITIES.

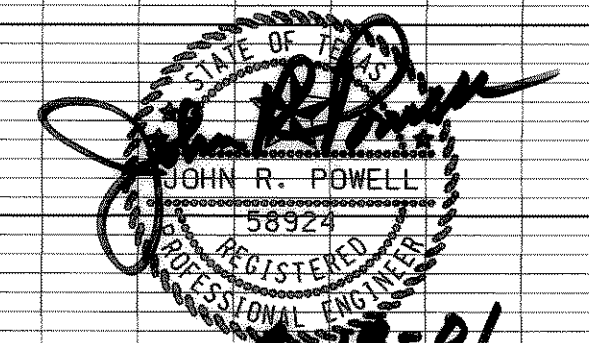
AS-BUILT PLANS
NOTE: THE INTENT OF THE OWNER AND ENGINEER WAS TO CONSTRUCT THESE IMPROVEMENTS IN ACCORDANCE WITH THESE PLANS AS APPROVED BY THE CITY OF ROCKWALL. THE UTILITIES AND GRADES WERE SET ON THE GROUND FOR CONSTRUCTION ACCORDING TO SAID PLANS AND THE CITY OF ROCKWALL INSPECTED THE CONSTRUCTION. THE OWNER OR ENGINEER DID NOT VERIFY LINES OR GRADES AFTER CONSTRUCTION.



PLAN
SCALE: 1" = 20'



PROFILE
SCALE: H = 1" = 10', V = 1" = 20'



THE SEAL APPEARING ON THIS DOCUMENT WAS AUTHORIZED BY JOHN R. POWELL, P.E. 58924 ON FEBRUARY 12, 2001. ALTERATION OF A SEALED DOCUMENT WITHOUT PROPER NOTIFICATION TO THE RESPONSIBLE ENGINEER IS AN OFFENSE UNDER THE TEXAS ENGINEERING PRACTICE ACT.

**SANITARY SEWER PLAN & PROFILES
LINES A & B**

ROCKWALL CITY HALL COMPLEX

CITY OF ROCKWALL, TEXAS

R-DELTA ENGINEERS, INC.
618 MAIN STREET GARLAND, TEXAS 75040
Phone: 972-494-6651 WWW.RDELTA.COM

DESIGN: JRP/MDP	CHECK:	SCALE: AS SHOWN	SHEET
DRAWN: MDP	DATE: FEBRUARY 2001	RDE PROJECT: 98-755	C11 of 13