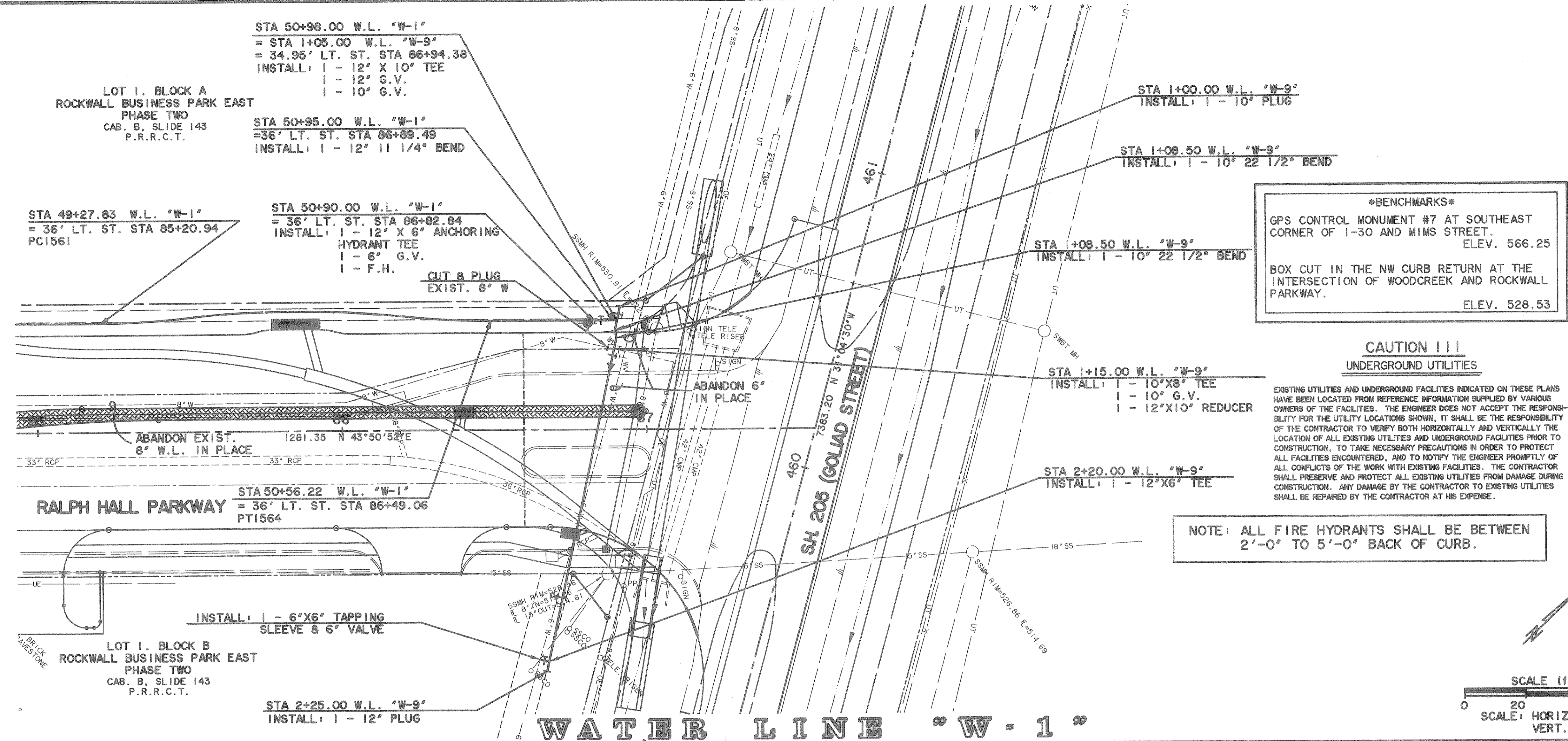
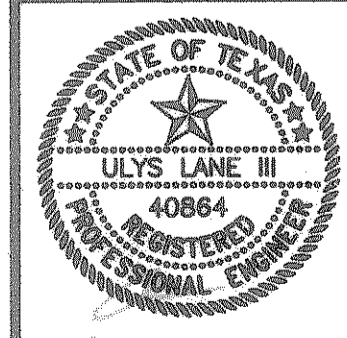


**WATER LINE
 PLAN & PROFILE
 STA 49+00 TO END
 & WATER LINE "W-9"**

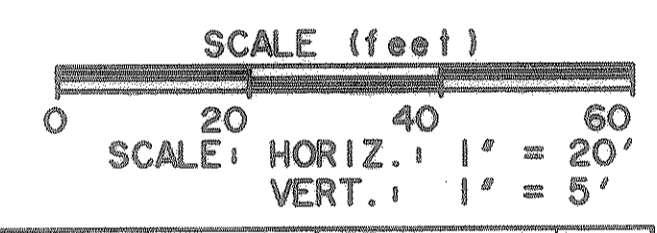


BENCHMARK
 GPS CONTROL MONUMENT #7 AT SOUTHEAST CORNER OF I-30 AND MIMS STREET. ELEV. 566.25
 BOX CUT IN THE NW CURB RETURN AT THE INTERSECTION OF WOODCREEK AND ROCKWALL PARKWAY. ELEV. 528.53

**CAUTION !!!
 UNDERGROUND UTILITIES**

EXISTING UTILITIES AND UNDERGROUND FACILITIES INDICATED ON THESE PLANS HAVE BEEN LOCATED FROM REFERENCE INFORMATION SUPPLIED BY VARIOUS OWNERS OF THE FACILITIES. THE ENGINEER DOES NOT ACCEPT THE RESPONSIBILITY FOR THE UTILITY LOCATIONS SHOWN. IT SHALL BE THE RESPONSIBILITY OF THE CONTRACTOR TO VERIFY BOTH HORIZONTALLY AND VERTICALLY THE LOCATION OF ALL EXISTING UTILITIES AND UNDERGROUND FACILITIES PRIOR TO CONSTRUCTION, TO TAKE NECESSARY PRECAUTIONS IN ORDER TO PROTECT ALL FACILITIES ENCOUNTERED, AND TO NOTIFY THE ENGINEER PROMPTLY OF ALL CONFLICTS OF THE WORK WITH EXISTING FACILITIES. THE CONTRACTOR SHALL PRESERVE AND PROTECT ALL EXISTING UTILITIES FROM DAMAGE DURING CONSTRUCTION. ANY DAMAGE BY THE CONTRACTOR TO EXISTING UTILITIES SHALL BE REPAIRED BY THE CONTRACTOR AT HIS EXPENSE.

NOTE: ALL FIRE HYDRANTS SHALL BE BETWEEN 2'-0" TO 5'-0" BACK OF CURB.



WATER LINE "W-1"		WATER LINE "W-1"	
540	100.0 VC		540
530	PVI 49+25.00 EL 523.15 NG C	PROP. GRADE	530
520	PVC 49+25.00 EL 523.15	12" WATER LINE +0.68%	520
510	100' PVI 49+75.00 EL 524.11 VC = -0.16	EXIST. 8" S.S.	510
	PVI 50+25.00 EL 524.46		
	524.62		
	STA 50+90.00 "W-1" INSTALL: 1-12" X 6" ANCHORING HYDRANT TEE		
	524.96		
	49+00	50+00	51+00

**RECORD PLANS
 12-17-2002**