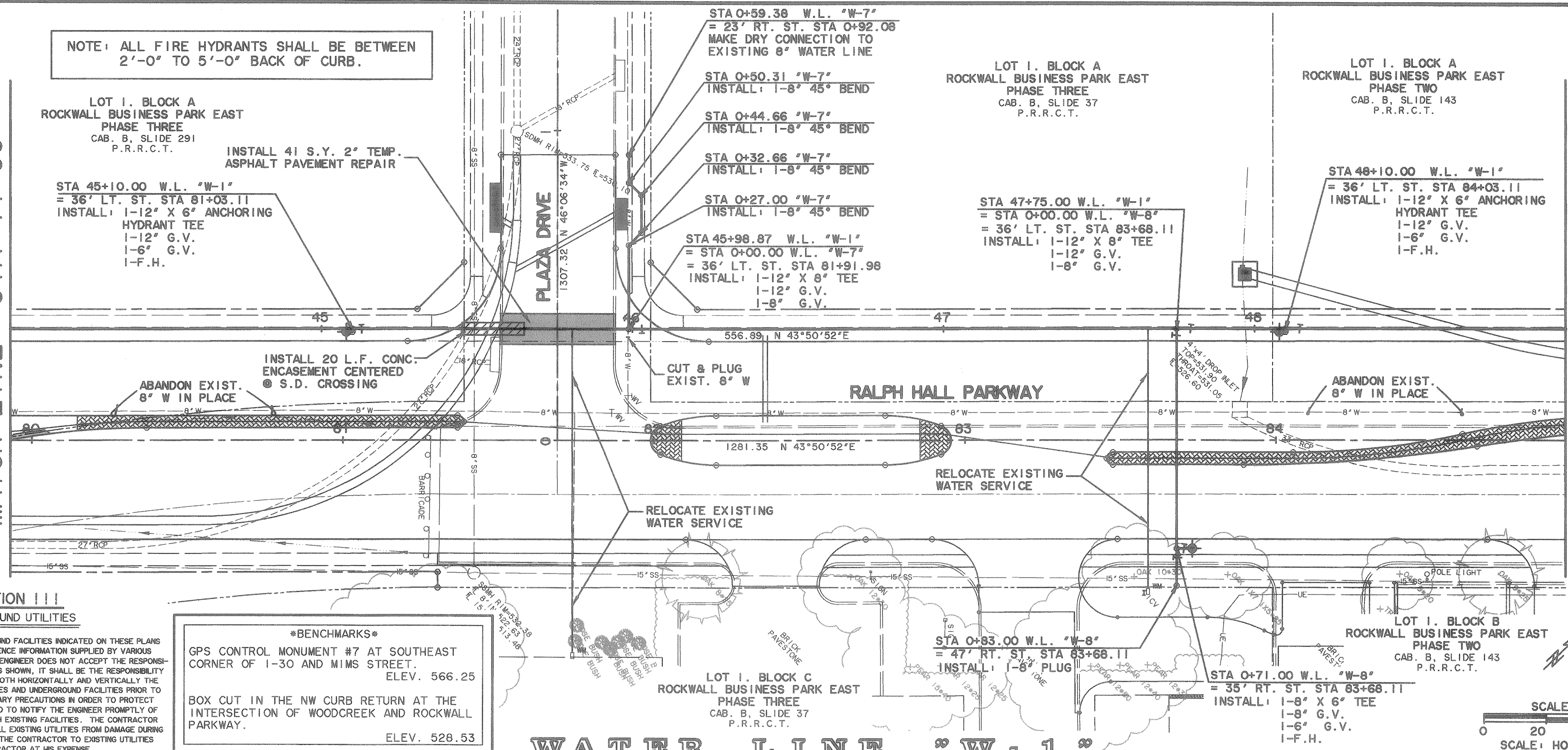


NOTE: ALL FIRE HYDRANTS SHALL BE BETWEEN 2'-0" TO 5'-0" BACK OF CURB.

MATCH LINE STA 44+00

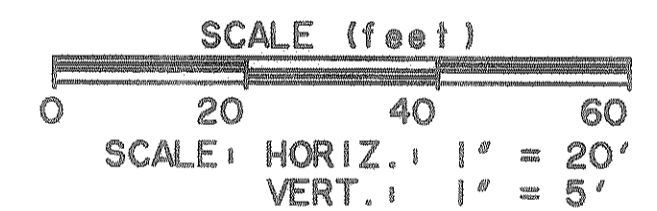
MATCH LINE STA 49+00



CAUTION !!! UNDERGROUND UTILITIES

EXISTING UTILITIES AND UNDERGROUND FACILITIES INDICATED ON THESE PLANS HAVE BEEN LOCATED FROM REFERENCE INFORMATION SUPPLIED BY VARIOUS OWNERS OF THE FACILITIES. THE ENGINEER DOES NOT ACCEPT THE RESPONSIBILITY FOR THE UTILITY LOCATIONS SHOWN, IT SHALL BE THE RESPONSIBILITY OF THE CONTRACTOR TO VERIFY BOTH HORIZONTALLY AND VERTICALLY THE LOCATION OF ALL EXISTING UTILITIES AND UNDERGROUND FACILITIES PRIOR TO CONSTRUCTION, TO TAKE NECESSARY PRECAUTIONS IN ORDER TO PROTECT ALL FACILITIES ENCOUNTERED, AND TO NOTIFY THE ENGINEER PROMPTLY OF ALL CONFLICTS OF THE WORK WITH EXISTING FACILITIES. THE CONTRACTOR SHALL PRESERVE AND PROTECT ALL EXISTING UTILITIES FROM DAMAGE DURING CONSTRUCTION. ANY DAMAGE BY THE CONTRACTOR TO EXISTING UTILITIES SHALL BE REPAIRED BY THE CONTRACTOR AT HIS EXPENSE.

BENCHMARK
GPS CONTROL MONUMENT #7 AT SOUTHEAST CORNER OF I-30 AND MIMS STREET. ELEV. 566.25
BOX CUT IN THE NW CURB RETURN AT THE INTERSECTION OF WOODCREEK AND ROCKWALL PARKWAY. ELEV. 528.53

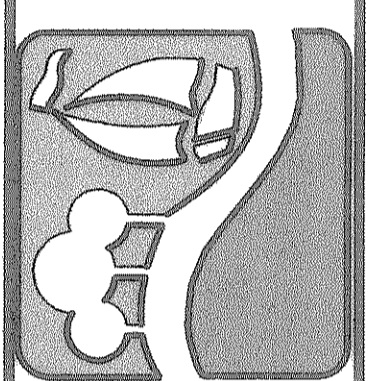


WATER LINE "W-1"

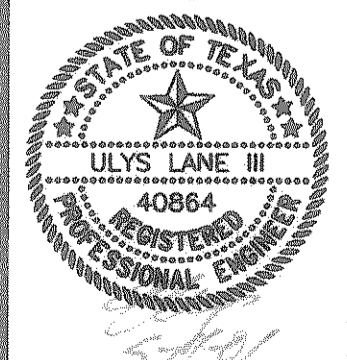
STA	TOP OF PIPE ELEV.	DESCRIPTION	STA	TOP OF PIPE ELEV.
44+00	519.78		48+00	522.11
44+04	520.04	100' PVI 44+25.00 EL 520.24 VC = -0.19	48+04	522.41
44+21	520.21		48+22	522.22
44+29	520.29	PVT 44+75.00 EL 520.29	48+41	522.41
45+00	520.31	STA 45+10.00 "W-1" INSTALL: 1-12" X 6" ANCHORING HYDRANT TEE 1-12" G.V.	48+72	522.72
45+41	520.41	INSTALL 20 L.F. CONC. ENCASEMENT CENTERED @ S.D. CROSSING	49+00	522.72
45+57	520.57			
45+63	520.63	STA 45+98.87 "W-1" INSTALL: 1-12" X 8" TEE 1-12" G.V.		
45+19	521.19	PVC 46+25.00 EL 521.19		
45+54	521.54			
45+60	521.60	100' PVI 46+75.00 EL 521.99 VC = -0.19		
45+97	521.97			
46+04	522.04	PVT 47+25.00 EL 522.04		
46+06	522.06			
47+00	522.11	STA 47+75.00 "W-1" = STA 0+00.00 W.L. "W-8" INSTALL: 1-12" X 6" TEE 1-12" G.V.		
48+00	522.11			
48+04	522.41	STA 48+10.00 "W-1" INSTALL: 1-12" X 6" ANCHORING HYDRANT TEE 1-12" G.V.		
48+22	522.22			
48+41	522.41			
48+72	522.72			

TIME 10:46 FILE: WLPPT7.dwg

PREPARED BY:
VIA WIER & ASSOCIATES, INC.
ENGINEERS SURVEYORS LAND PLANNERS
4300 BELLEVUE PLACE SUITE 130 ARLINGTON, TEXAS 76010 METRO (817)767-7700
4100 NORTH CENTER BLVD. SUITE 200 FORT WORTH, TEXAS 76105 METRO (817)365-9437



WATER LINE "W-1"
PLAN & PROFILE
STA 44+00 TO 49+00



COPYRIGHT © WIER & ASSOCIATES, INC.
LAST SHEET EDIT DATE: 08-11-2001
WA# 97057
RECORD PLANS 12-17-2012
SHEET NO. 35