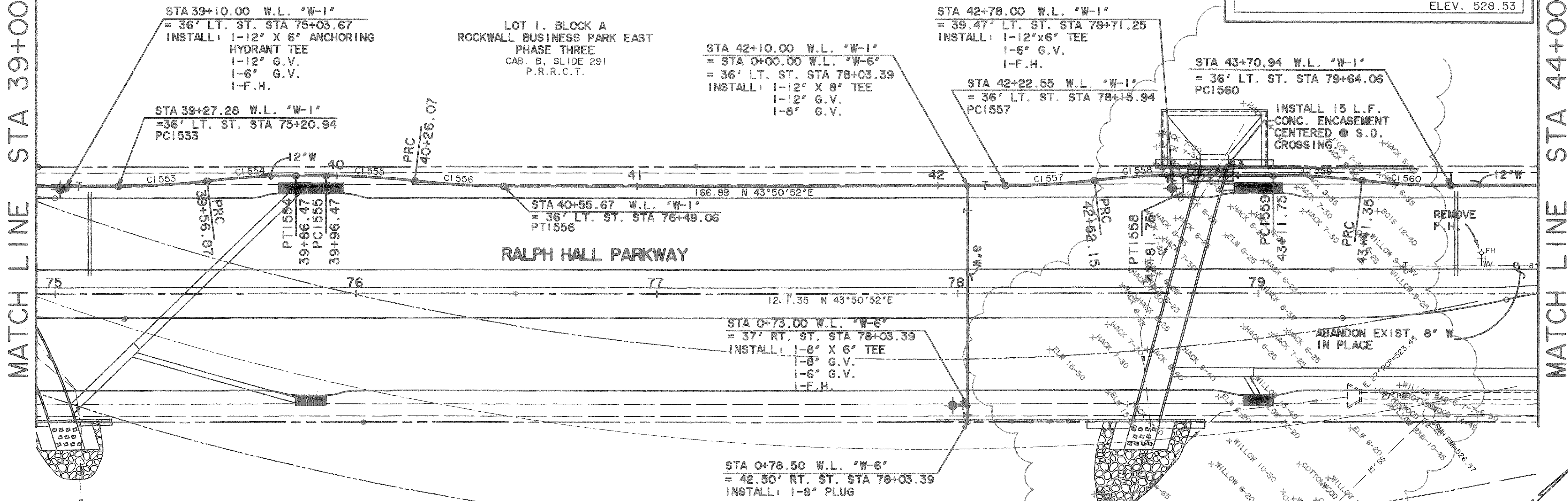


CURVE C1553	CURVE C1554	CURVE C1555	CURVE C1556	CURVE C1557	CURVE C1558	CURVE C1559	CURVE C1560
A 06°47'00"	A 06°47'00"	A 06°47'00"	A 06°47'00"	A 06°47'00"	A 06°47'00"	A 06°47'00"	A 06°47'00"
D 22°55'06"	D 22°55'06"	D 22°55'06"	D 22°55'06"	D 22°55'06"	D 22°55'06"	D 22°55'06"	D 22°55'06"
250.00	250.00	250.00	250.00	250.00	250.00	250.00	250.00
14.82	14.82	14.82	14.82	14.82	14.82	14.82	14.82
29.60	29.60	29.60	29.60	29.60	29.60	29.60	29.60
0.44	0.44	0.44	0.44	0.44	0.44	0.44	0.44

BENCHMARK
 GPS CONTROL MONUMENT #7 AT SOUTHEAST CORNER OF I-30 AND MIMS STREET. ELEV. 566.25
 BOX CUT IN THE NW CURB RETURN AT THE INTERSECTION OF WOODCREEK AND ROCKWALL PARKWAY. ELEV. 528.53

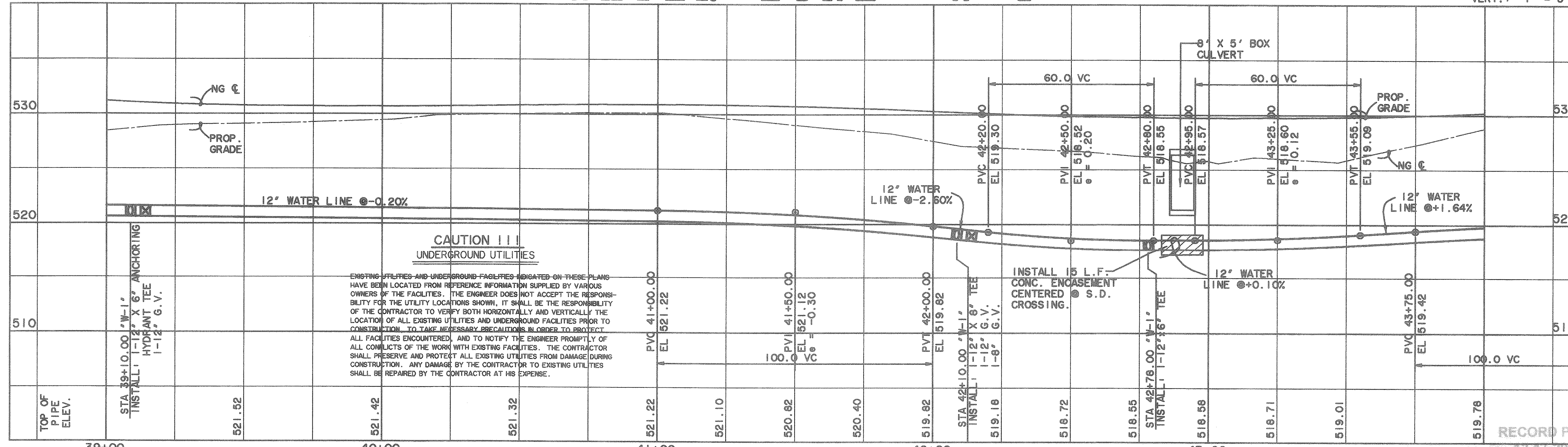
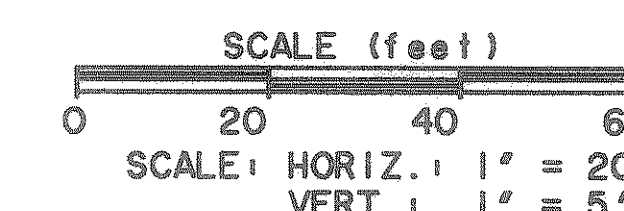


****NOTE:** ALL PVC WATER LINE SHALL BE C-900 CLASS 200 PIPE. ALL CHANGES IN WATER LINE DIRECTION (BENDS) SHALL BE RESTRAINED (MEGA-LUG OR EQUAL) AND CONCRETE BLOCKED. THE NEXT JOINT EITHER SIDE OF THE CHANGE OF DIRECTION SHALL ALSO BE RESTRAINED.

LOT I, BLOCK B
 ROCKWALL BUSINESS PARK EAST
 PHASE THREE
 CAB. B, SLIDE 291
 P.R.R.C.T.

NOTE: ALL FIRE HYDRANTS SHALL BE BETWEEN 2'-0" TO 5'-0" BACK OF CURB.

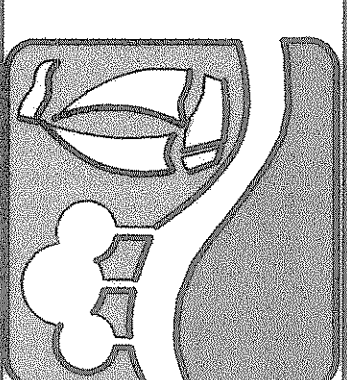
WATER LINE "W-1"



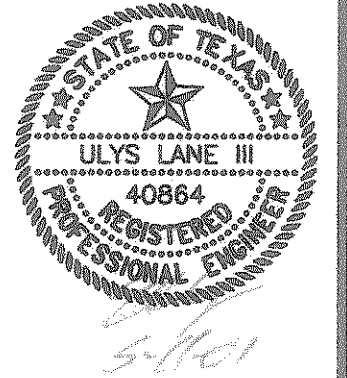
CAUTION !!!
 UNDERGROUND UTILITIES

EXISTING UTILITIES AND UNDERGROUND FACILITIES INDICATED ON THESE PLANS HAVE BEEN LOCATED FROM REFERENCE INFORMATION SUPPLIED BY VARIOUS OWNERS OF THE FACILITIES. THE ENGINEER DOES NOT ACCEPT THE RESPONSIBILITY FOR THE UTILITY LOCATIONS SHOWN, IT SHALL BE THE RESPONSIBILITY OF THE CONTRACTOR TO VERIFY BOTH HORIZONTALLY AND VERTICALLY THE LOCATION OF ALL EXISTING UTILITIES AND UNDERGROUND FACILITIES PRIOR TO CONSTRUCTION. TO TAKE NECESSARY PRECAUTIONS IN ORDER TO PROTECT ALL FACILITIES ENCOUNTERED, AND TO NOTIFY THE ENGINEER PROMPTLY OF ALL CONFLICTS OF THE WORK WITH EXISTING FACILITIES. THE CONTRACTOR SHALL PRESERVE AND PROTECT ALL EXISTING UTILITIES FROM DAMAGE DURING CONSTRUCTION. ANY DAMAGE BY THE CONTRACTOR TO EXISTING UTILITIES SHALL BE REPAIRED BY THE CONTRACTOR AT HIS EXPENSE.

PREPARED BY:
VIA WIER & ASSOCIATES, INC.
 ENGINEERS SURVEYORS LAND PLANNERS
 4300 BELLEVUE PLACE SUITE 130 ARLINGTON, TEXAS 76018 METRO (817)467-7700
 4100 MAIN CARRIER BLDG. SUITE 200 FORT WORTH, TEXAS 76155 METRO (817)355-9457



WATER LINE "W-1"
PLAN & PROFILE
 STA 39+00 TO 44+00



COPYRIGHT ©
 WIER & ASSOCIATES, INC.
 LAST SHEET EDIT
 DATE 06-18-2001
 W.A. 97087
SHEET NO. 34

TIME 10:45 FILE: WLP16.dwg

RECORD PLANS
 12-17-2002