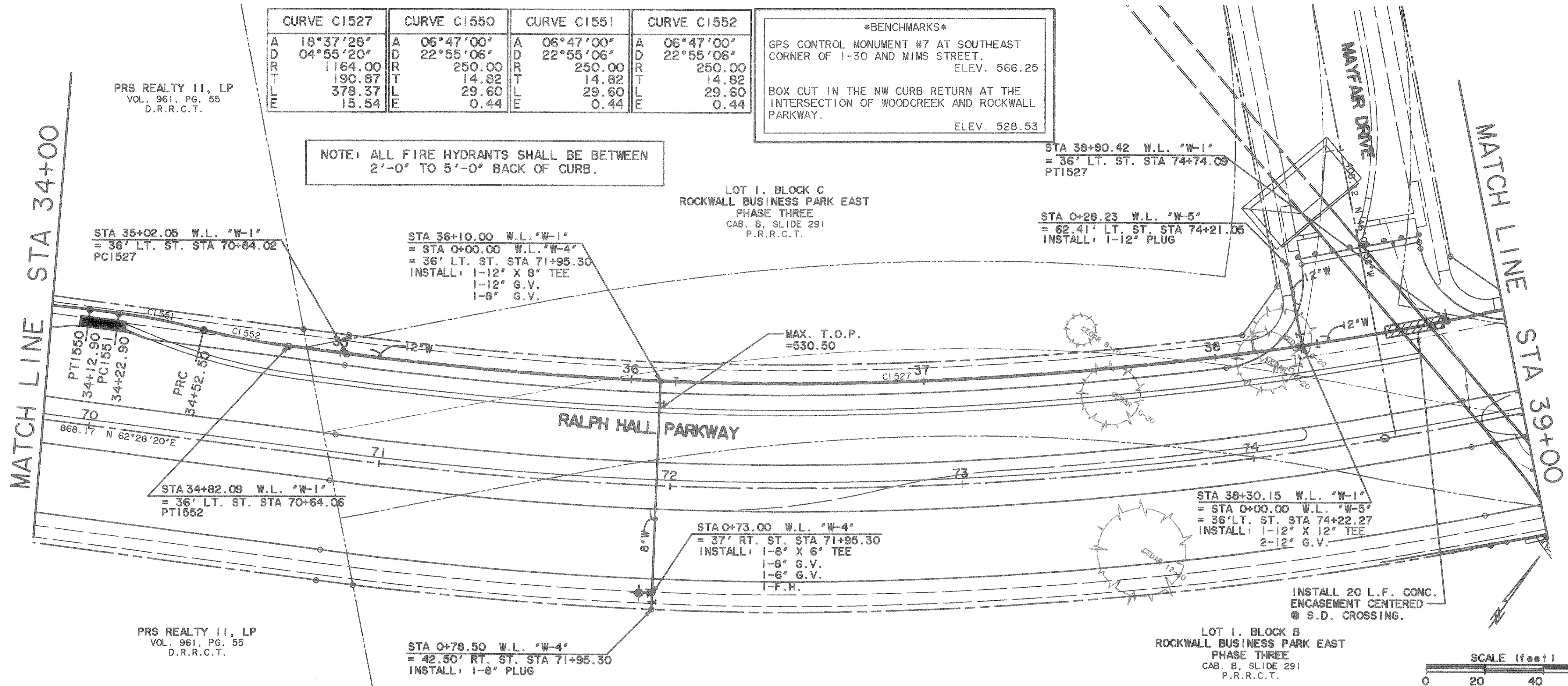


CURVE C1527		CURVE C1550		CURVE C1551		CURVE C1552	
A	18°37'28"	A	06°47'00"	A	06°47'00"	A	06°47'00"
D	04°55'20"	D	22°55'06"	D	22°55'06"	D	22°55'06"
R	1164.00	R	250.00	R	250.00	R	250.00
L	190.87	L	14.82	L	14.82	L	14.82
E	378.37	E	29.60	E	29.60	E	29.60
	15.54		0.44		0.44		0.44

**\*BENCHMARK\***  
 GPS CONTROL MONUMENT #7 AT SOUTHEAST CORNER OF I-30 AND MIMS STREET. ELEV. 566.25  
 BOX CUT IN THE NW CURB RETURN AT THE INTERSECTION OF WOODCREEK AND ROCKWALL PARKWAY. ELEV. 528.53

NOTE: ALL FIRE HYDRANTS SHALL BE BETWEEN 2'-0" TO 5'-0" BACK OF CURB.



PRS REALTY II, LP  
 VOL. 961, PG. 55  
 D.R.R.C.T.

LOT I, BLOCK C  
 ROCKWALL BUSINESS PARK EAST  
 PHASE THREE  
 CAB. B, SLIDE 291  
 P.R.R.C.T.

STA 38+80.42 W.L. "W-1"  
 = 36' LT. ST. STA 74+74.09  
 PT1527

STA 0+28.23 W.L. "W-5"  
 = 62.41' LT. ST. STA 74+21.05  
 INSTALL: 1-12" PLUG

STA 35+02.05 W.L. "W-1"  
 = 36' LT. ST. STA 70+84.02  
 PC1527

STA 36+10.00 W.L. "W-1"  
 = STA 0+00.00 W.L. "W-4"  
 = 36' LT. ST. STA 71+95.30  
 INSTALL: 1-12" X 8" TEE  
 1-12" G.V.  
 1-8" G.V.

STA 34+82.09 W.L. "W-1"  
 = 36' LT. ST. STA 70+64.06  
 PT1552

STA 0+73.00 W.L. "W-4"  
 = 37' RT. ST. STA 71+95.30  
 INSTALL: 1-8" X 6" TEE  
 1-8" G.V.  
 1-6" G.V.  
 1-F.H.

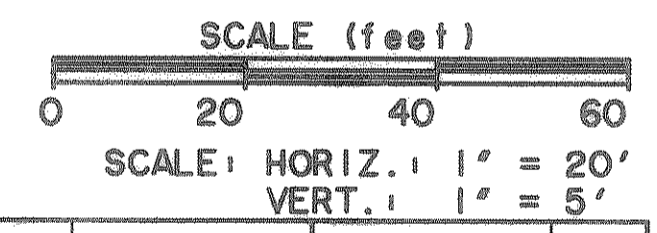
STA 38+30.15 W.L. "W-1"  
 = STA 0+00.00 W.L. "W-5"  
 = 36' LT. ST. STA 74+22.27  
 INSTALL: 1-12" X 12" TEE  
 2-12" G.V.

INSTALL 20 L.F. CONC.  
 ENCASUREMENT CENTERED  
 @ S.D. CROSSING.

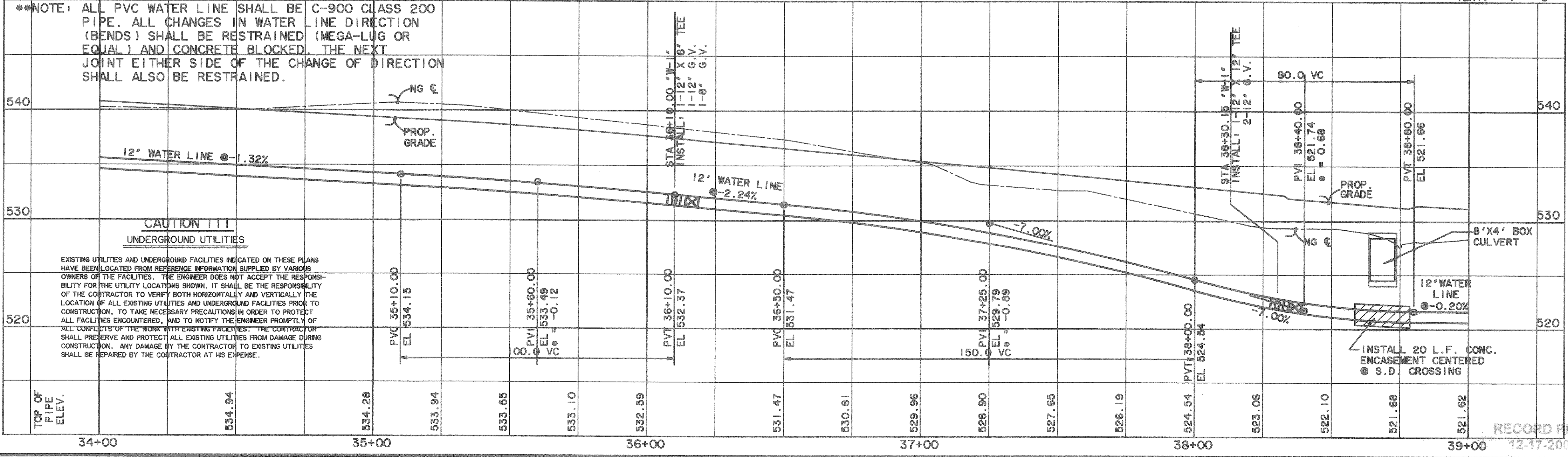
PRS REALTY II, LP  
 VOL. 961, PG. 55  
 D.R.R.C.T.

STA 0+78.50 W.L. "W-4"  
 = 42.50' RT. ST. STA 71+95.30  
 INSTALL: 1-8" PLUG

LOT I, BLOCK B  
 ROCKWALL BUSINESS PARK EAST  
 PHASE THREE  
 CAB. B, SLIDE 291  
 P.R.R.C.T.



**WATER LINE "W-1"**

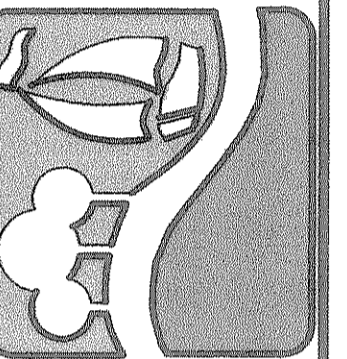


NOTE: ALL PVC WATER LINE SHALL BE C-900 CLASS 200 PIPE. ALL CHANGES IN WATER LINE DIRECTION (BENDS) SHALL BE RESTRAINED (MEGA-LUG OR EQUAL) AND CONCRETE BLOCKED. THE NEXT JOINT EITHER SIDE OF THE CHANGE OF DIRECTION SHALL ALSO BE RESTRAINED.

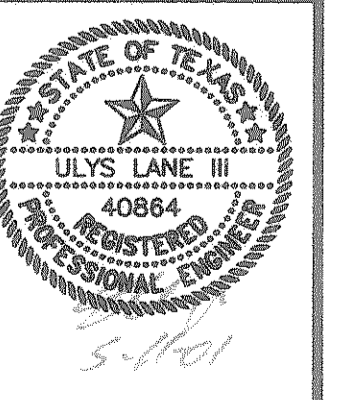
**CAUTION !!!**  
 UNDERGROUND UTILITIES

EXISTING UTILITIES AND UNDERGROUND FACILITIES INDICATED ON THESE PLANS HAVE BEEN LOCATED FROM REFERENCE INFORMATION SUPPLIED BY VARIOUS OWNERS OF THE FACILITIES. THE ENGINEER DOES NOT ACCEPT THE RESPONSIBILITY FOR THE UTILITY LOCATIONS SHOWN. IT SHALL BE THE RESPONSIBILITY OF THE CONTRACTOR TO VERIFY BOTH HORIZONTALLY AND VERTICALLY THE LOCATION OF ALL EXISTING UTILITIES AND UNDERGROUND FACILITIES PRIOR TO CONSTRUCTION, TO TAKE NECESSARY PRECAUTIONS IN ORDER TO PROTECT ALL FACILITIES ENCOUNTERED, AND TO NOTIFY THE ENGINEER PROMPTLY OF ALL CONFLICTS OF THE WORK WITH EXISTING FACILITIES. THE CONTRACTOR SHALL PRESERVE AND PROTECT ALL EXISTING UTILITIES FROM DAMAGE DURING CONSTRUCTION. ANY DAMAGE BY THE CONTRACTOR TO EXISTING UTILITIES SHALL BE REPAIRED BY THE CONTRACTOR AT HIS EXPENSE.

PREPARED BY:  
**VIA WIER & ASSOCIATES, INC.**  
 ENGINEERS SURVEYORS LAND PLANNERS  
 4300 BELLEVUE PLACE SUITE 130 ARLINGTON, TEXAS 76010 METRO (817) 467-7700  
 4100 MAIN CARRIER BLVD. SUITE 200 FORT WORTH, TEXAS 76105 METRO (817) 365-9437



**WATER LINE "W-1"**  
**PLAN & PROFILE**  
 STA 34+00 TO 39+00



COPYRIGHT ©  
 WIER & ASSOCIATES, INC.  
 LAST SHEET EDIT  
 DATE: 06-11-2001  
 W.A. 97057  
**SHEET NO. 33**

TIME 10:44 FILE: WLP015.dwg

RECORD PLANS  
 12-17-2002