

CAUTION !!!
UNDERGROUND UTILITIES

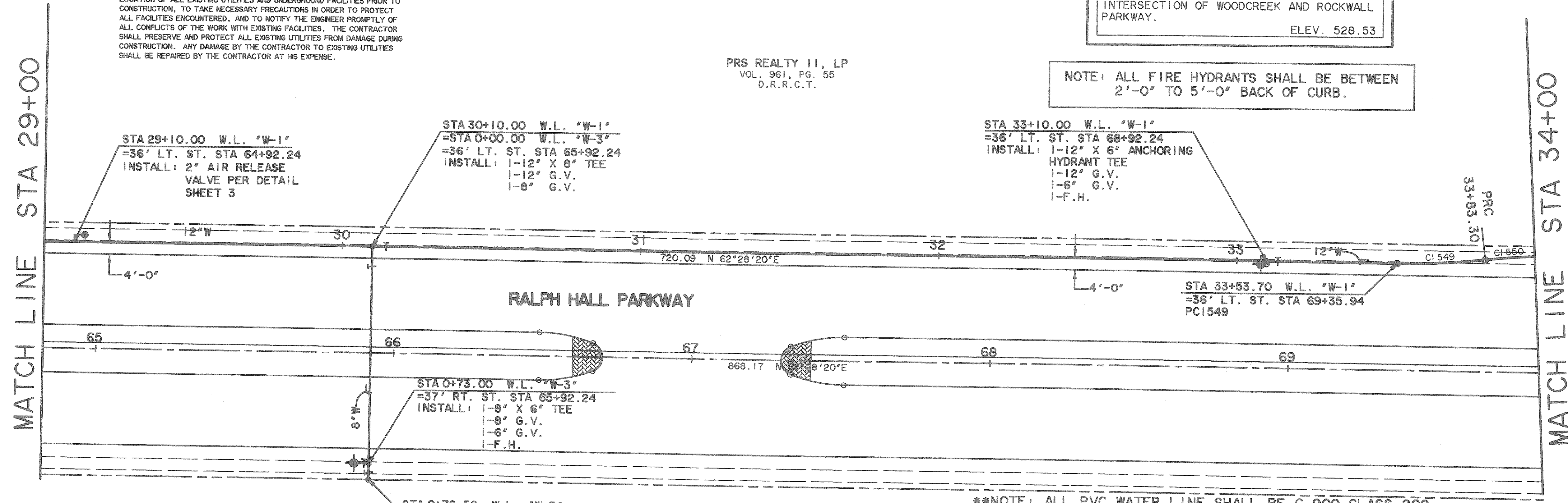
EXISTING UTILITIES AND UNDERGROUND FACILITIES INDICATED ON THESE PLANS HAVE BEEN LOCATED FROM REFERENCE INFORMATION SUPPLIED BY VARIOUS OWNERS OF THE FACILITIES. THE ENGINEER DOES NOT ACCEPT THE RESPONSIBILITY FOR THE UTILITY LOCATIONS SHOWN. IT SHALL BE THE RESPONSIBILITY OF THE CONTRACTOR TO VERIFY BOTH HORIZONTALLY AND VERTICALLY THE LOCATION OF ALL EXISTING UTILITIES AND UNDERGROUND FACILITIES PRIOR TO CONSTRUCTION, TO TAKE NECESSARY PRECAUTIONS IN ORDER TO PROTECT ALL FACILITIES ENCOUNTERED, AND TO NOTIFY THE ENGINEER PROMPTLY OF ALL CONFLICTS OF THE WORK WITH EXISTING FACILITIES. THE CONTRACTOR SHALL PRESERVE AND PROTECT ALL EXISTING UTILITIES FROM DAMAGE DURING CONSTRUCTION. ANY DAMAGE BY THE CONTRACTOR TO EXISTING UTILITIES SHALL BE REPAIRED BY THE CONTRACTOR AT HIS EXPENSE.

| CURVE C1549 | | CURVE C1550 | |
|-------------|-----------|-------------|-----------|
| A | 06°47'00" | A | 06°47'00" |
| D | 22°55'06" | D | 22°55'06" |
| R | 250.00 | R | 250.00 |
| T | 14.82 | T | 14.82 |
| L | 29.60 | L | 29.60 |
| E | 0.44 | E | 0.44 |

BENCHMARK
GPS CONTROL MONUMENT #7 AT SOUTHEAST CORNER OF I-30 AND MIMS STREET.
ELEV. 566.25
BOX CUT IN THE NW CURB RETURN AT THE INTERSECTION OF WOODCREEK AND ROCKWALL PARKWAY.
ELEV. 528.53

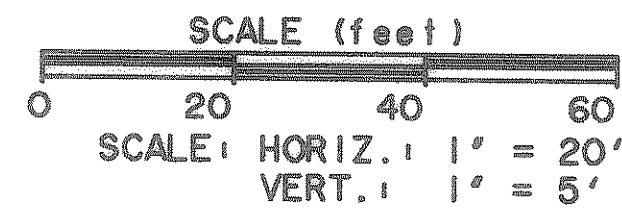
PRS REALTY II, LP
VOL. 961, PG. 55
D.R.R.C.T.

NOTE: ALL FIRE HYDRANTS SHALL BE BETWEEN 2'-0" TO 5'-0" BACK OF CURB.

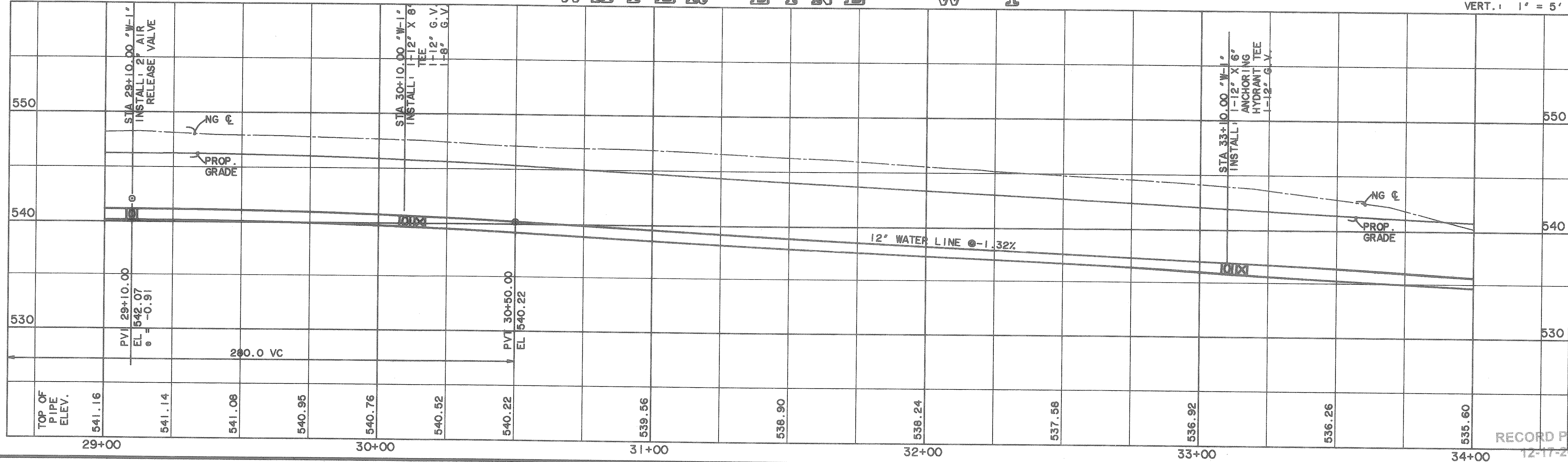


PRS REALTY II, LP
VOL. 961, PG. 55
D.R.R.C.T.

NOTE: ALL PVC WATER LINE SHALL BE C-900 CLASS 200 PIPE. ALL CHANGES IN WATER LINE DIRECTION (BENDS) SHALL BE RESTRAINED (MEGA-LUG OR EQUAL) AND CONCRETE BLOCKED. THE NEXT JOINT EITHER SIDE OF THE CHANGE OF DIRECTION SHALL ALSO BE RESTRAINED.

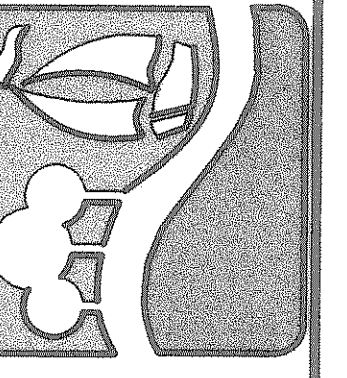


WATER LINE "W-1"

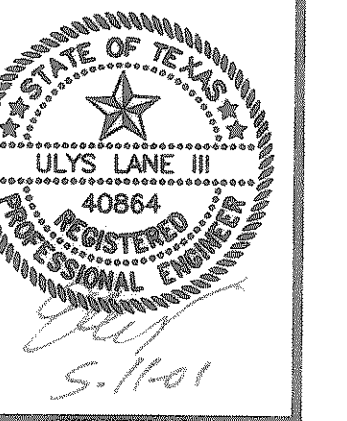


TIME: 10:43 FILE: 1 WLPP14.dwg

PREPARED BY:
VIA WIER & ASSOCIATES, INC.
ENGINEERS SURVEYORS LAND PLANNERS
4300 BELTWAY PLACE SUITE 130 ARLINGTON, TEXAS 76010 (817)461-7700
4105 AMAN CREEK BLVD. SUITE 200 FORT WORTH, TEXAS 76155 (817)355-9437



WATER LINE "W-1"
PLAN & PROFILE
STA 29+00 TO 34+00



COPYRIGHT ©
WIER & ASSOCIATES, INC.
LAST SHEET EDIT
DATE: 05-11-2001
WA# 97057
SHEET NO. 32

RECORD PLANS
12-17-2002