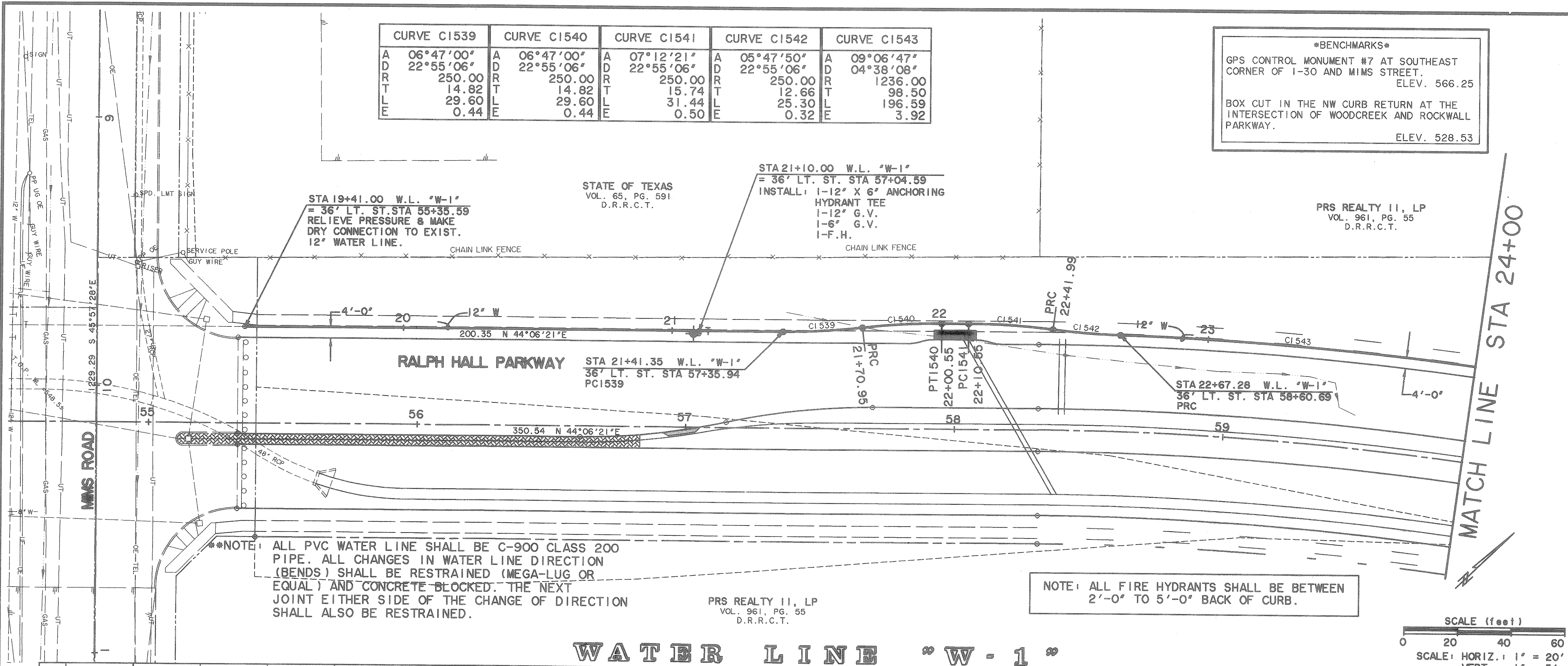


CURVE C1539		CURVE C1540		CURVE C1541		CURVE C1542		CURVE C1543	
A	06°47'00"	A	06°47'00"	A	07°12'21"	A	05°47'50"	A	09°06'47"
D	22°55'06"	D	22°55'06"	D	22°55'06"	D	22°55'06"	D	04°38'08"
R	250.00	R	250.00	R	250.00	R	250.00	R	1236.00
T	14.82	T	14.82	T	15.74	T	12.66	T	96.50
L	29.60	L	29.60	L	31.44	L	25.30	L	196.59
E	0.44	E	0.44	E	0.50	E	0.32	E	3.92

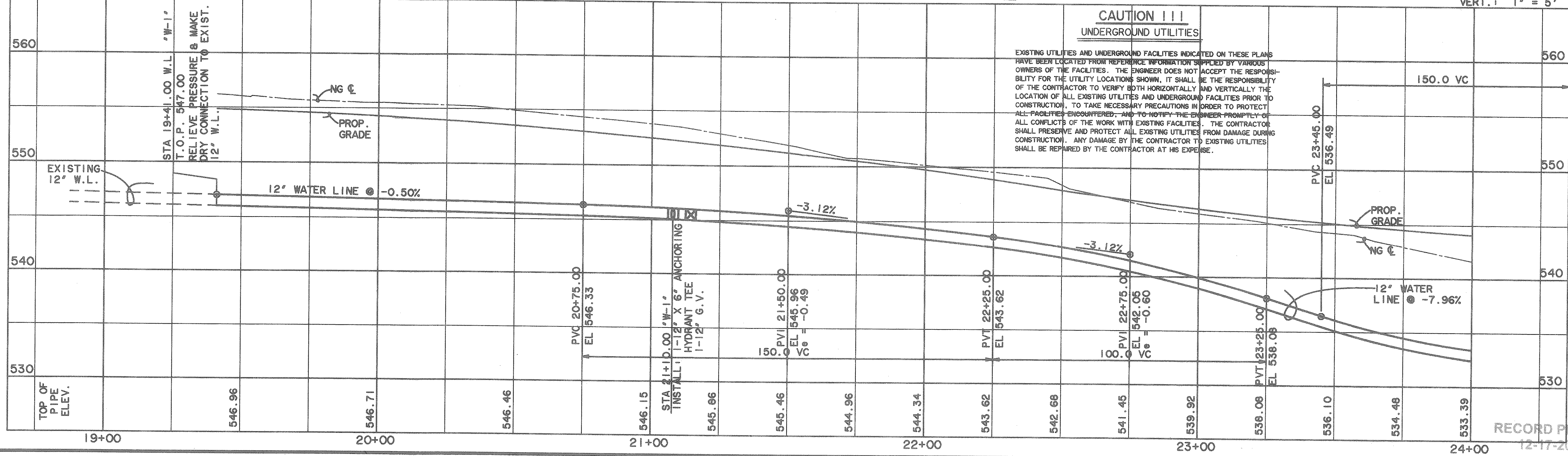
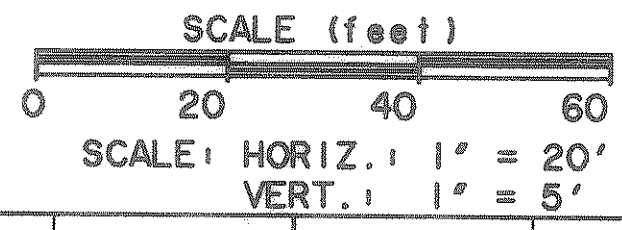
**\*BENCHMARK\***  
 GPS CONTROL MONUMENT #7 AT SOUTHEAST CORNER OF I-30 AND MIMS STREET.  
 ELEV. 566.25  
 BOX CUT IN THE NW CURB RETURN AT THE INTERSECTION OF WOODCREEK AND ROCKWALL PARKWAY.  
 ELEV. 528.53



**\*\*NOTE\*\*** ALL PVC WATER LINE SHALL BE C-900 CLASS 200 PIPE. ALL CHANGES IN WATER LINE DIRECTION (BENDS) SHALL BE RESTRAINED (MEGA-LUG OR EQUAL) AND CONCRETE BLOCKED. THE NEXT JOINT EITHER SIDE OF THE CHANGE OF DIRECTION SHALL ALSO BE RESTRAINED.

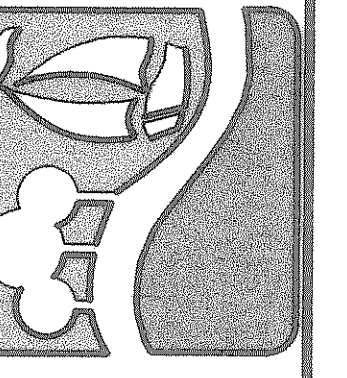
**NOTE:** ALL FIRE HYDRANTS SHALL BE BETWEEN 2'-0" TO 5'-0" BACK OF CURB.

### WATER LINE "W-1"

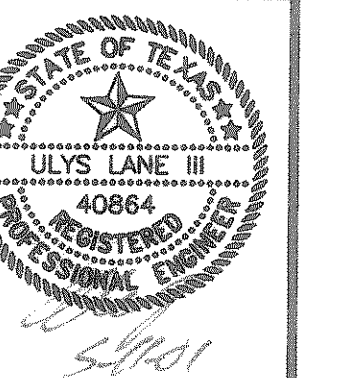


**CAUTION !!!**  
**UNDERGROUND UTILITIES**  
 EXISTING UTILITIES AND UNDERGROUND FACILITIES INDICATED ON THESE PLANS HAVE BEEN LOCATED FROM REFERENCE INFORMATION SUPPLIED BY VARIOUS OWNERS OF THE FACILITIES. THE ENGINEER DOES NOT ACCEPT THE RESPONSIBILITY FOR THE UTILITY LOCATIONS SHOWN. IT SHALL BE THE RESPONSIBILITY OF THE CONTRACTOR TO VERIFY BOTH HORIZONTALLY AND VERTICALLY THE LOCATION OF ALL EXISTING UTILITIES AND UNDERGROUND FACILITIES PRIOR TO CONSTRUCTION, TO TAKE NECESSARY PRECAUTIONS IN ORDER TO PROTECT ALL FACILITIES ENCOUNTERED, AND TO NOTIFY THE ENGINEER PROMPTLY OF ALL CONFLICTS OF THE WORK WITH EXISTING FACILITIES. THE CONTRACTOR SHALL PRESERVE AND PROTECT ALL EXISTING UTILITIES FROM DAMAGE DURING CONSTRUCTION. ANY DAMAGE BY THE CONTRACTOR TO EXISTING UTILITIES SHALL BE REPAIRED BY THE CONTRACTOR AT HIS EXPENSE.

PREPARED BY:  
**VIA WIER & ASSOCIATES, INC.**  
 ENGINEERS SURVEYORS LAND PLANNERS  
 4300 BELTWAY PLACE SUITE 130 ARLINGTON, TEXAS 76010 METRO (817)467-7700  
 4100 AMAR CORNER BLDG. SUITE 200 FORT WORTH, TEXAS 76105 METRO (817)365-4437



**WATER LINE "W-1"**  
**PLAN & PROFILE**  
 STA 19+41 TO 24+00



COPYRIGHT ©  
 WIER & ASSOCIATES, INC.  
 LAST SHEET EDIT  
 DATE 08-11-2001  
 WAW 97057  
**SHEET NO.**  
**30**

TIME: 10:41 FILE: WLPPI2.dwg

RECORD PLANS  
 12-17-2002