

LOT I, BLOCK A
ROCKWALL BUSINESS PARK EAST
PHASE THREE
CAB. B, SLIDE 291
P.R.R.C.T.

STA 0+00.00 S.D. LAT. "M-4"
= STA 0+49.08 S.D. LINE "M"
= 26.00' RT. ST. STA 78+67.03

STA 0+28.35 S.D. LAT. "M-4"
= STA 0+00.00 S.D. LAT. "M-4.5"
= 26.00' RT. ST. STA 78+95.38

CURVE C1530

A	89°57'26"
D	57°17'45"
R	100.00
T	99.93
L	157.00
E	41.37

STA 3+64.06 S.D. LAT. "M-4"
= 13.03' LT. ST. STA 0+92.03
CONNECT TO EXIST. 27" RCP
= 18.17' LT. ST. STA 0+75.00
CONST. 15' STD. CURB INLET
TOP = 533.50
E = 529.00

STA 05.77 S.D. LAT. "M-4.3"
= 18.17' LT. ST. STA 0+72.15

STA 3+45.95 S.D. LAT. "M-4"
= 13.03' LT. ST. STA 0+73.92
PT 1530

STA 3+40.40 S.D. LAT. "M-4"
= STA 0+00.00 S.D. LAT. "M-4.3"
= 13.18' LT. ST. STA 0+66.37

LOT I, BLOCK A
ROCKWALL BUSINESS PARK EAST
PHASE THREE
CAB. B, SLIDE 291
P.R.R.C.T.

STA 0+36.50 S.D. LAT. "M-4.4"
= 18.71' RT. ST. STA 0+73.00
CONST. 10' STD. CURB INLET
TOP = 533.60
E = 529.10

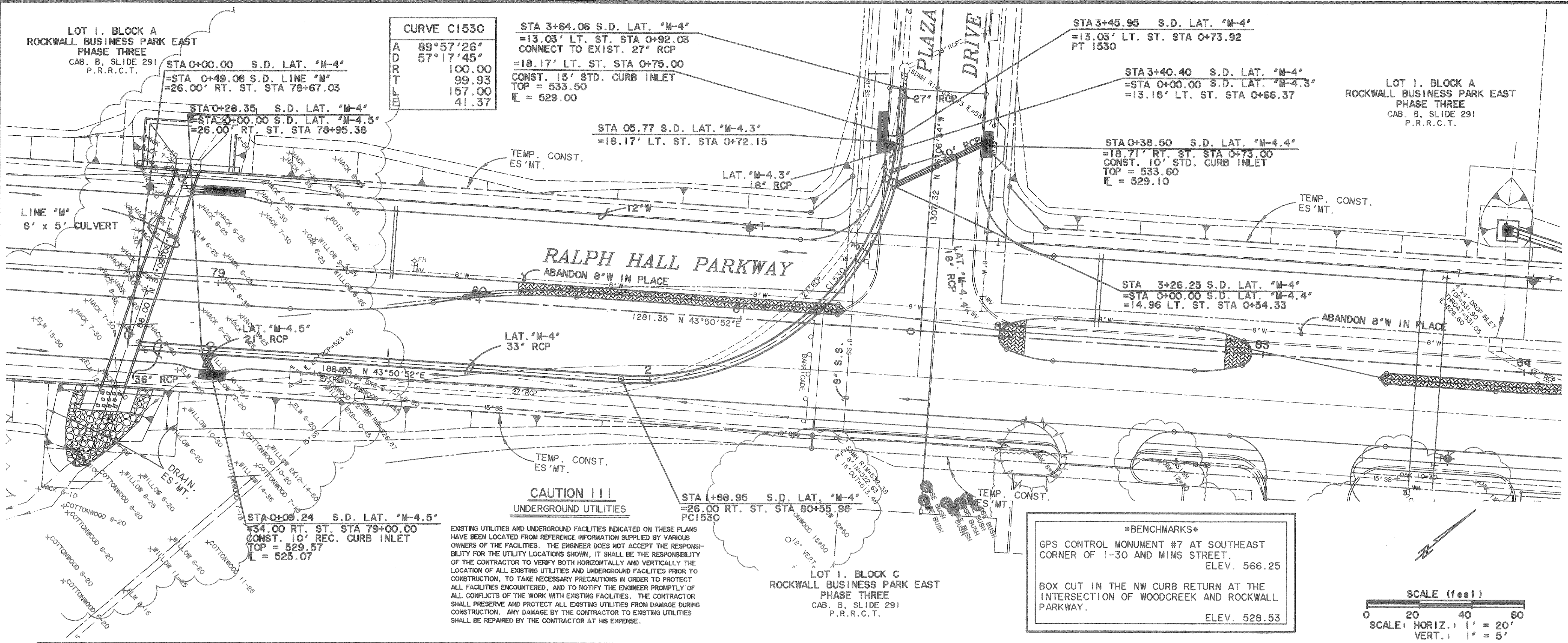
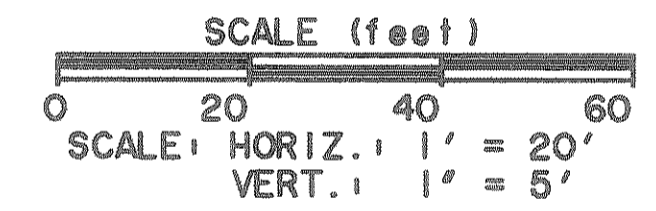
STA 3+26.25 S.D. LAT. "M-4"
= STA 0+00.00 S.D. LAT. "M-4.4"
= 14.96' LT. ST. STA 0+54.33

STA 1+89.95 S.D. LAT. "M-4"
= 26.00' RT. ST. STA 80+55.98
PC1530

CAUTION !!!
UNDERGROUND UTILITIES

EXISTING UTILITIES AND UNDERGROUND FACILITIES INDICATED ON THESE PLANS HAVE BEEN LOCATED FROM REFERENCE INFORMATION SUPPLIED BY VARIOUS OWNERS OF THE FACILITIES. THE ENGINEER DOES NOT ACCEPT THE RESPONSIBILITY FOR THE UTILITY LOCATIONS SHOWN. IT SHALL BE THE RESPONSIBILITY OF THE CONTRACTOR TO VERIFY BOTH HORIZONTALLY AND VERTICALLY THE LOCATION OF ALL EXISTING UTILITIES AND UNDERGROUND FACILITIES PRIOR TO CONSTRUCTION, TO TAKE NECESSARY PRECAUTIONS IN ORDER TO PROTECT ALL FACILITIES ENCOUNTERED, AND TO NOTIFY THE ENGINEER PROMPTLY OF ALL CONFLICTS OF THE WORK WITH EXISTING FACILITIES. THE CONTRACTOR SHALL PRESERVE AND PROTECT ALL EXISTING UTILITIES FROM DAMAGE DURING CONSTRUCTION. ANY DAMAGE BY THE CONTRACTOR TO EXISTING UTILITIES SHALL BE REPAIRED BY THE CONTRACTOR AT HIS EXPENSE.

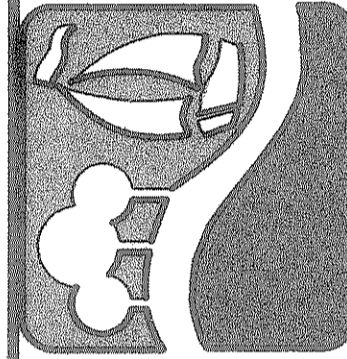
BENCHMARKS
GPS CONTROL MONUMENT #7 AT SOUTHEAST CORNER OF I-30 AND MIMS STREET. ELEV. 566.25
BOX CUT IN THE NW CURB RETURN AT THE INTERSECTION OF WOODCREEK AND ROCKWALL PARKWAY. ELEV. 528.53



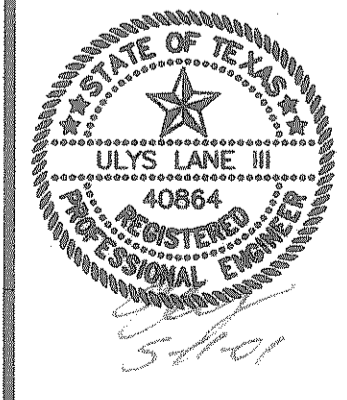
ELEV.	STORM DRAIN LAT. "M-4"		S.D. LAT. "M-4.3"		S.D. LAT. "M-4.4"		S.D. LAT. "M-4.5"	
	STA	DATA	STA	DATA	STA	DATA	STA	DATA
535	0+00	36" RCP	0+00	33" RCP	0+00	18" RCP	0+00	36" RCP
525	0+28.35	33" RCP @ +1.84%	0+28.35	33" RCP @ +1.00%	0+36.50	18" RCP @ +16.98%	0+36.50	36" RCP
515	0+49.08	33" RCP	0+49.08	33" RCP	0+49.08	18" RCP	0+49.08	36" RCP
	0+75.00	33" RCP	0+75.00	33" RCP	0+75.00	18" RCP	0+75.00	36" RCP
	0+92.03	33" RCP	0+92.03	33" RCP	0+92.03	18" RCP	0+92.03	36" RCP
	0+95.38	33" RCP	0+95.38	33" RCP	0+95.38	18" RCP	0+95.38	36" RCP
	0+98.95	33" RCP	0+98.95	33" RCP	0+98.95	18" RCP	0+98.95	36" RCP
	1+00	33" RCP	1+00	33" RCP	1+00	18" RCP	1+00	36" RCP
	1+25	33" RCP	1+25	33" RCP	1+25	18" RCP	1+25	36" RCP
	1+50	33" RCP	1+50	33" RCP	1+50	18" RCP	1+50	36" RCP
	1+75	33" RCP	1+75	33" RCP	1+75	18" RCP	1+75	36" RCP
	2+00	33" RCP	2+00	33" RCP	2+00	18" RCP	2+00	36" RCP
	2+25	33" RCP	2+25	33" RCP	2+25	18" RCP	2+25	36" RCP
	2+50	33" RCP	2+50	33" RCP	2+50	18" RCP	2+50	36" RCP
	2+75	33" RCP	2+75	33" RCP	2+75	18" RCP	2+75	36" RCP
	3+00	33" RCP	3+00	33" RCP	3+00	18" RCP	3+00	36" RCP
	3+25	33" RCP	3+25	33" RCP	3+25	18" RCP	3+25	36" RCP
	3+50	33" RCP	3+50	33" RCP	3+50	18" RCP	3+50	36" RCP
	3+75	33" RCP	3+75	33" RCP	3+75	18" RCP	3+75	36" RCP
	4+00	33" RCP	4+00	33" RCP	4+00	18" RCP	4+00	36" RCP

FILE: SDP27.dwg
TIME: 11:11

PREPARED BY:
VIA WIER & ASSOCIATES, INC.
ENGINEERS SURVEYORS LAND PLANNERS
4300 BELLEVUE PLACE SUITE 130 ARLINGTON, TEXAS 76010 METRO (817) 467-7700
4100 NORTH CARREER BLVD. SUITE 200 FORT WORTH, TEXAS 76116 METRO (817) 365-4467



STORM DRAIN LATERAL "M-4"
PLAN & PROFILE
STA 0+00 TO END



COPYRIGHT ©
WIER & ASSOCIATES, INC.
LAST SHEET EDIT
DATE: 06-11-2001
WAB 97087
SHEET NO. 26

RECORD PLANS
12-17-2002