

LOT I, BLOCK C
ROCKWALL BUSINESS PARK EAST
PHASE THREE
CAB. B, SLIDE 291
P.R.R.C.T.

STA 2+54.00 S.D. LINE "N"
= STA 0+00.00 S.D. LAT. "N-2"
= 40.36' LT. ST. STA 459+53.84

STA 2+32.00 S.D. LINE "N"
= 38.25' LT. ST. STA 459+31.94
CONST. 5'x4' 6:1 SLOPING HEADWALL
PER DETAIL SHEET 57.

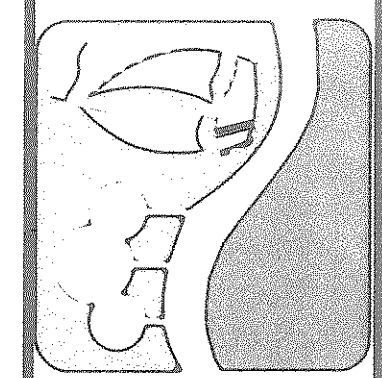
CAUTION !!!
UNDERGROUND UTILITIES

EXISTING UTILITIES AND UNDERGROUND FACILITIES INDICATED ON THESE PLANS HAVE BEEN LOCATED FROM REFERENCE INFORMATION SUPPLIED BY VARIOUS OWNERS OF THE FACILITIES. THE ENGINEER DOES NOT ACCEPT THE RESPONSIBILITY FOR THE UTILITY LOCATIONS SHOWN, IT SHALL BE THE RESPONSIBILITY OF THE CONTRACTOR TO VERIFY BOTH HORIZONTALLY AND VERTICALLY THE LOCATION OF ALL EXISTING UTILITIES AND UNDERGROUND FACILITIES PRIOR TO CONSTRUCTION, TO TAKE NECESSARY PRECAUTIONS IN ORDER TO PROTECT ALL FACILITIES ENCOUNTERED, AND TO NOTIFY THE ENGINEER PROMPTLY OF ALL CONFLICTS OF THE WORK WITH EXISTING FACILITIES. THE CONTRACTOR SHALL PRESERVE AND PROTECT ALL EXISTING UTILITIES FROM DAMAGE DURING CONSTRUCTION. ANY DAMAGE BY THE CONTRACTOR TO EXISTING UTILITIES SHALL BE REPAIRED BY THE CONTRACTOR AT HIS EXPENSE.

LOT I, BLOCK C
ROCKWALL BUSINESS PARK EAST
PHASE THREE
CAB. B, SLIDE 291
P.R.R.C.T.

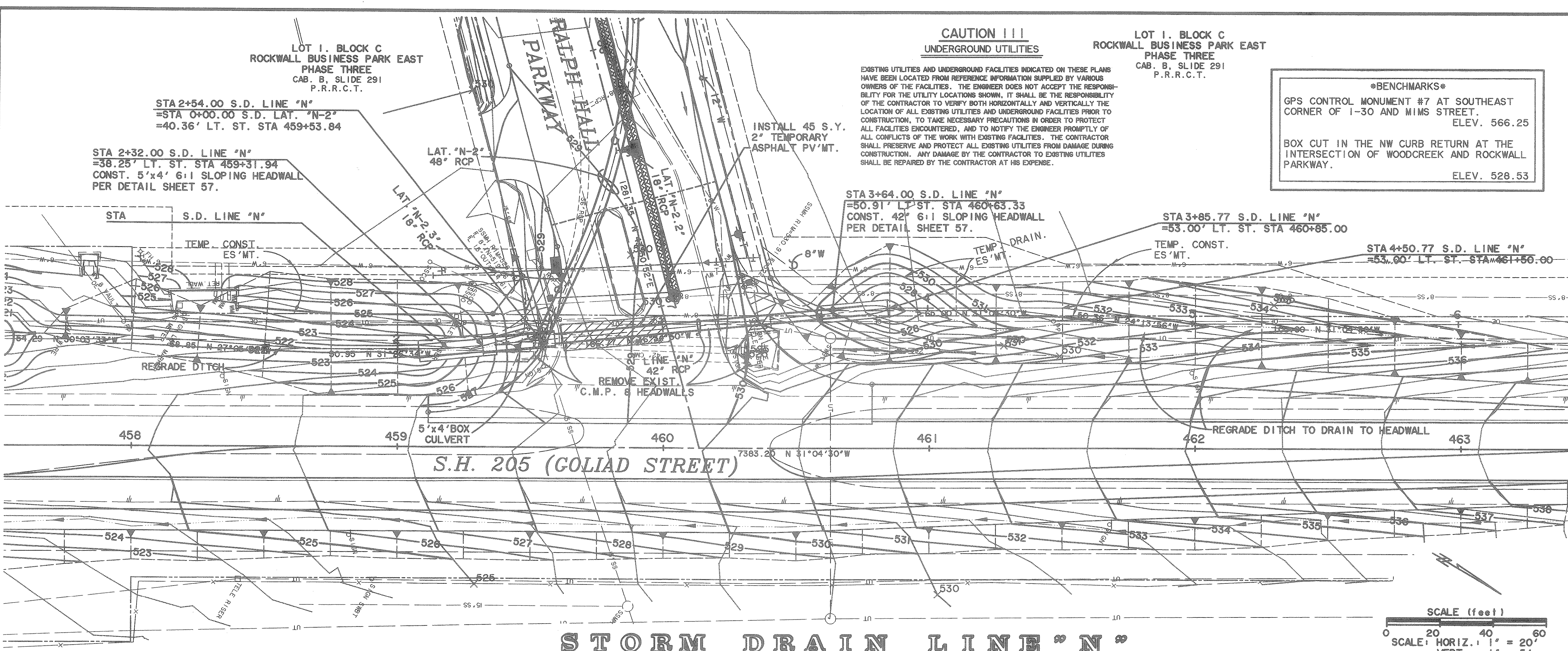
BENCHMARKS
GPS CONTROL MONUMENT #7 AT SOUTHEAST CORNER OF I-30 AND MIMS STREET.
ELEV. 566.25
BOX CUT IN THE NW CURB RETURN AT THE INTERSECTION OF WOODCREEK AND ROCKWALL PARKWAY.
ELEV. 528.53

PREPARED BY:
VIA WIER & ASSOCIATES, INC.
ENGINEERS SURVEYORS LAND PLANNERS
4300 BELLEVUE PLACE SUITE 130 ARLINGTON, TEXAS 76010 METRO (817) 467-7700
8721 5th STREET FRODO, TEXAS METRO (214) 387-8000
www.viawier.com

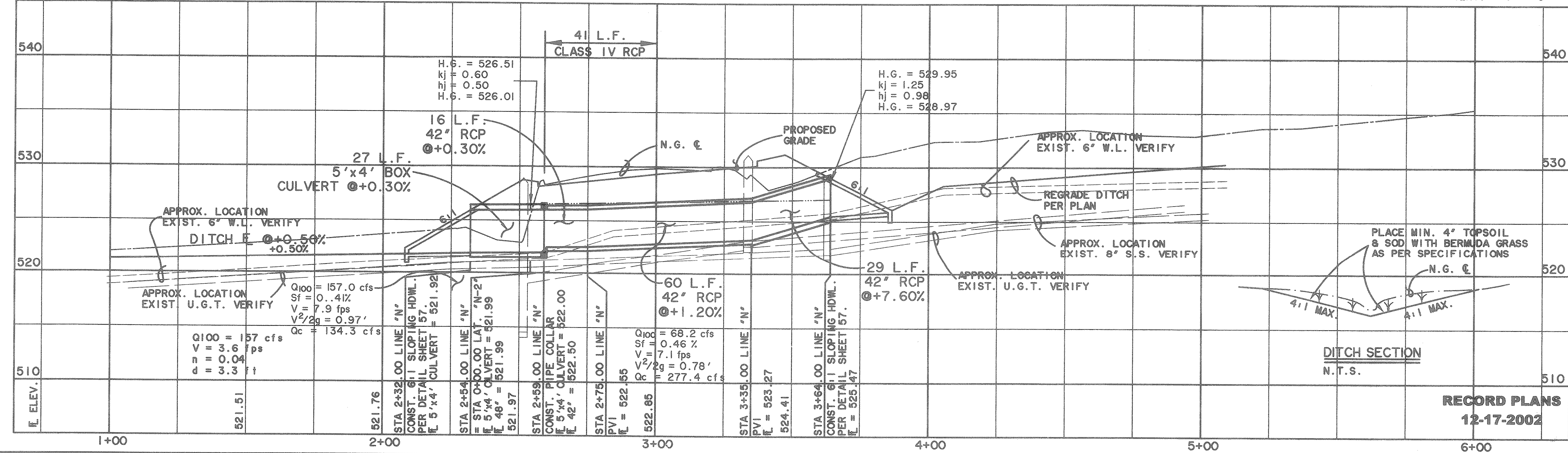
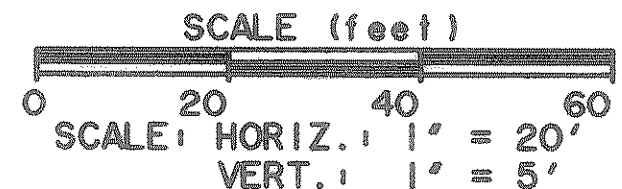


STORM DRAIN LINE "N"
PLAN & PROFILE
STA 0+00 TO END

STATE OF TEXAS
REGISTERED PROFESSIONAL ENGINEER
17802
COPYRIGHT ©
WIER & ASSOCIATES, INC.
LAST SHEET EDIT
DATE 12-17-2002
WAS 97057
SHEET NO. 27



STORM DRAIN LINE "N"



RECORD PLANS
12-17-2002

FILE: sdp26.dwg
TIME: 15:41