

| CURVE C1536 | | CURVE C1537 | |
|-------------|-----------|-------------|-----------|
| A | 54°14'33" | A | 08°46'35" |
| D | 57°17'45" | D | 04°52'49" |
| R | 100.00 | R | 1174.00 |
| T | 51.22 | T | 90.09 |
| E | 94.67 | E | 179.83 |
| | 12.35 | E | 3.45 |

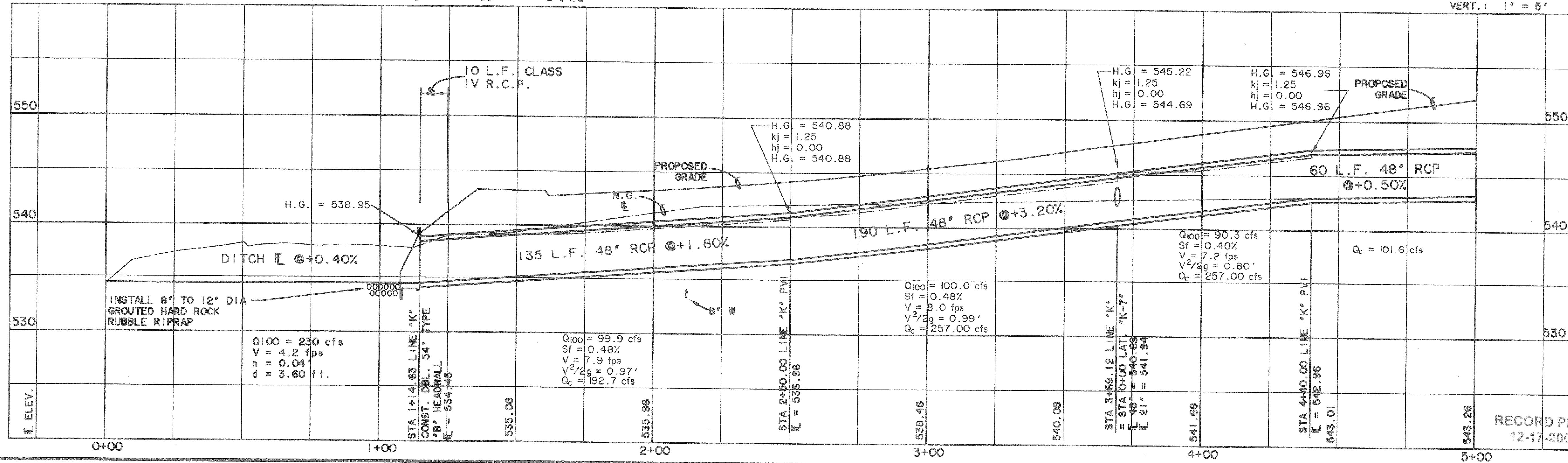
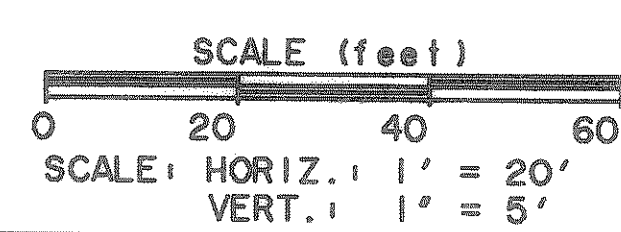
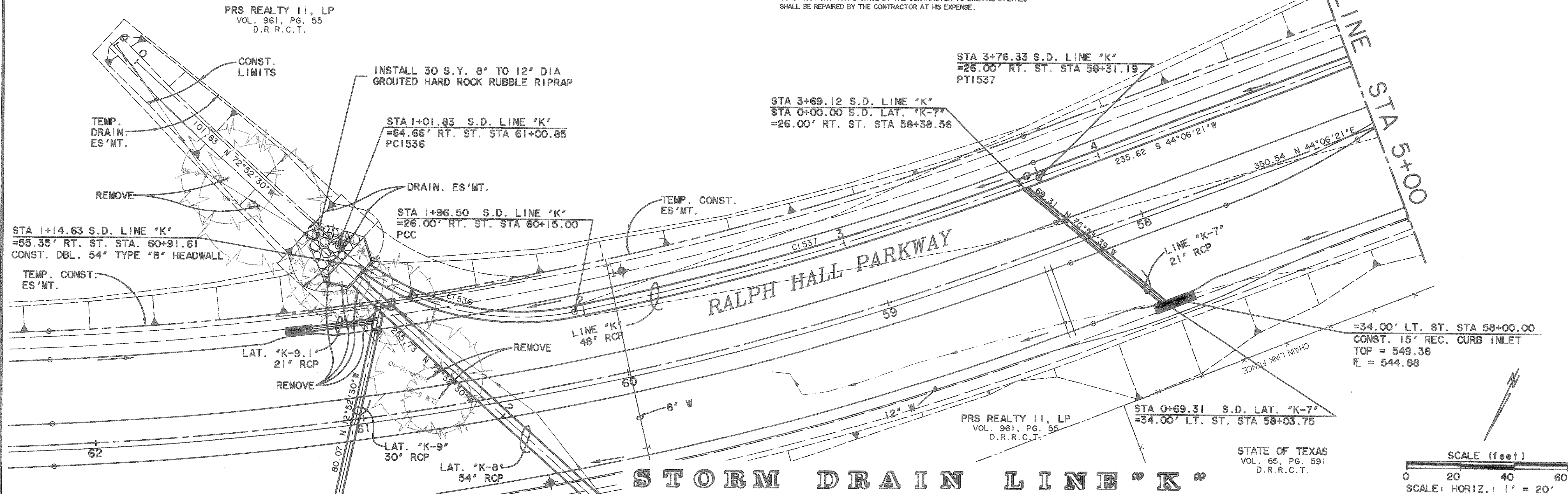
BENCHMARKS
 GPS CONTROL MONUMENT #7 AT SOUTHEAST CORNER OF I-30 AND MIMS STREET. ELEV. 566.25
 BOX CUT IN THE NW CURB RETURN AT THE INTERSECTION OF WOODCREEK AND ROCKWALL PARKWAY. ELEV. 528.53

CAUTION !!!
 UNDERGROUND UTILITIES

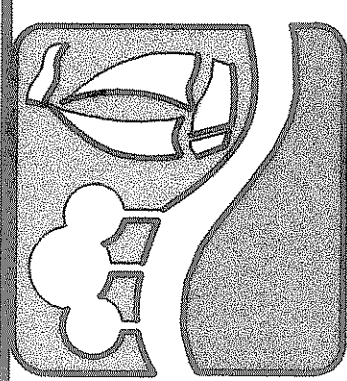
EXISTING UTILITIES AND UNDERGROUND FACILITIES INDICATED ON THESE PLANS HAVE BEEN LOCATED FROM REFERENCE INFORMATION SUPPLIED BY VARIOUS OWNERS OF THE FACILITIES. THE ENGINEER DOES NOT ACCEPT THE RESPONSIBILITY FOR THE UTILITY LOCATIONS SHOWN, IT SHALL BE THE RESPONSIBILITY OF THE CONTRACTOR TO VERIFY BOTH HORIZONTALLY AND VERTICALLY THE LOCATION OF ALL EXISTING UTILITIES AND UNDERGROUND FACILITIES PRIOR TO CONSTRUCTION, TO TAKE NECESSARY PRECAUTIONS IN ORDER TO PROTECT ALL FACILITIES ENCOUNTERED, AND TO NOTIFY THE ENGINEER PROMPTLY OF ALL CONFLICTS OF THE WORK WITH EXISTING FACILITIES. THE CONTRACTOR SHALL PRESERVE AND PROTECT ALL EXISTING UTILITIES FROM DAMAGE DURING CONSTRUCTION. ANY DAMAGE BY THE CONTRACTOR TO EXISTING UTILITIES SHALL BE REPAIRED BY THE CONTRACTOR AT HIS EXPENSE.

PRS REALTY II, LP
 VOL. 961, PG. 55
 D.R.R.C.T.

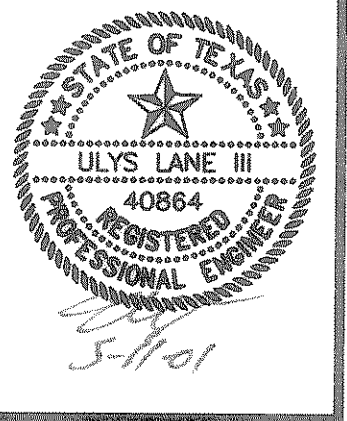
PRS REALTY II, LP
 VOL. 961, PG. 55
 D.R.R.C.T.



PREPARED BY:
WIA WIER & ASSOCIATES, INC.
 ENGINEERS SURVEYORS LAND PLANNERS
 4300 BELTWAY PLACE SUITE 130 ARLINGTON, TEXAS 76016 METRO (817)467-7700
 4108 ANNA CHERRY BLVD. SUITE 200 FORT WORTH, TEXAS 76105 METRO (817)355-4477



STORM DRAIN LINE "K"
PLAN & PROFILE
 STA 0+00 TO 5+00



STATE OF TEXAS
 JULY 1986
 40864
 REGISTERED
 PROFESSIONAL ENGINEER
 WIA
 5-11-01
 COPYRIGHT ©
 WIER & ASSOCIATES, INC.
 LAST SHEET EDIT
 DATE 05-11-2001
 WA# 97057
SHEET NO.
 20

TIME: 10:55 FILE: SDPP21.dwg

RECORD PLANS
 12-17-2002