

CURVE C1521		CURVE C1522	
A	32°51'36"	A	32°51'36"
D	38°11'50"	D	57°17'45"
R	150.00	R	100.00
T	44.23	T	29.49
E	86.03	E	57.35
	6.39		4.26

PRS REALTY II, LP
VOL. 961, PG. 55
D.R.R.C.T.

CAUTION !!!
UNDERGROUND UTILITIES

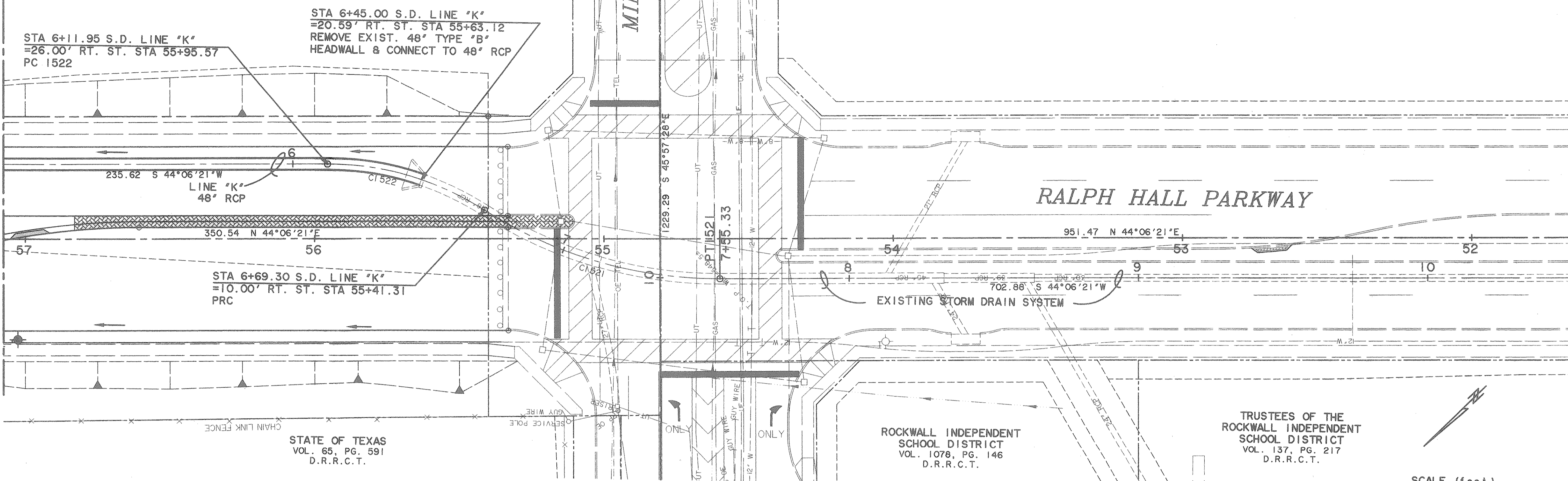
EXISTING UTILITIES AND UNDERGROUND FACILITIES INDICATED ON THESE PLANS HAVE BEEN LOCATED FROM REFERENCE INFORMATION SUPPLIED BY VARIOUS OWNERS OF THE FACILITIES. THE ENGINEER DOES NOT ACCEPT THE RESPONSIBILITY FOR THE UTILITY LOCATIONS SHOWN. IT SHALL BE THE RESPONSIBILITY OF THE CONTRACTOR TO VERIFY BOTH HORIZONTALLY AND VERTICALLY THE LOCATION OF ALL EXISTING UTILITIES AND UNDERGROUND FACILITIES PRIOR TO CONSTRUCTION, TO TAKE NECESSARY PRECAUTIONS IN ORDER TO PROTECT ALL FACILITIES ENCOUNTERED, AND TO NOTIFY THE ENGINEER PROMPTLY OF ALL CONFLICTS OF THE WORK WITH EXISTING FACILITIES. THE CONTRACTOR SHALL PRESERVE AND PROTECT ALL EXISTING UTILITIES FROM DAMAGE DURING CONSTRUCTION. ANY DAMAGE BY THE CONTRACTOR TO EXISTING UTILITIES SHALL BE REPAIRED BY THE CONTRACTOR AT HIS EXPENSE.

SHEPHERD PLACE
HOMES, INC.
VOL. 1289, PG. 150
D.R.R.C.T.

BENCHMARK
GPS CONTROL MONUMENT #7 AT SOUTHEAST CORNER OF I-30 AND MIMS STREET.
ELEV. 566.25

BOX CUT IN THE NW CURB RETURN AT THE INTERSECTION OF WOODCREEK AND ROCKWALL PARKWAY.
ELEV. 528.53

MATCH LINE STA 5+00



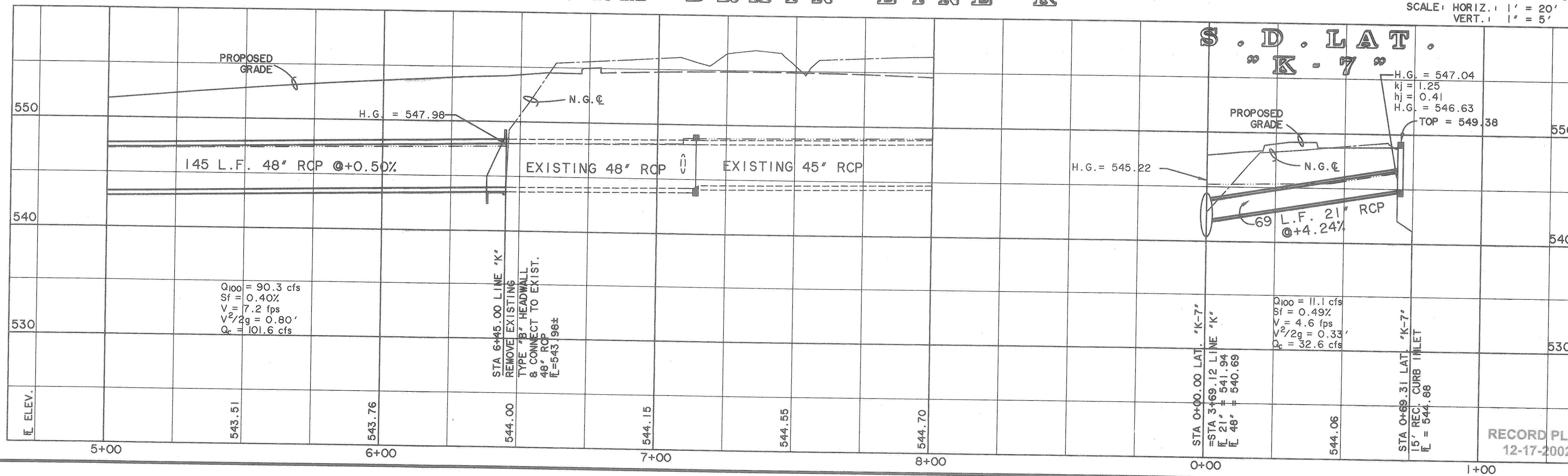
STATE OF TEXAS
VOL. 65, PG. 591
D.R.R.C.T.

ROCKWALL INDEPENDENT
SCHOOL DISTRICT
VOL. 1078, PG. 146
D.R.R.C.T.

TRUSTEES OF THE
ROCKWALL INDEPENDENT
SCHOOL DISTRICT
VOL. 137, PG. 217
D.R.R.C.T.

STORM DRAIN LINE "K"

SCALE (feet)
0 20 40 60
SCALE: HORIZ. 1" = 20'
VERT. 1" = 5'



S . D . L A T .
" K - 7 "

PROPOSED GRADE

N.G. &

PROPOSED GRADE

H.G. = 547.04
kj = 1.25
hj = 0.41
H.G. = 546.63
TOP = 549.38

145 L.F. 48" RCP @+0.50%

EXISTING 48" RCP

EXISTING 45" RCP

H.G. = 545.22

69 L.F. 21" RCP @+4.24%

$Q_{100} = 90.3$ cfs
 $S_f = 0.40\%$
 $V = 7.2$ fps
 $V^2/2g = 0.80'$
 $Q_c = 101.6$ cfs

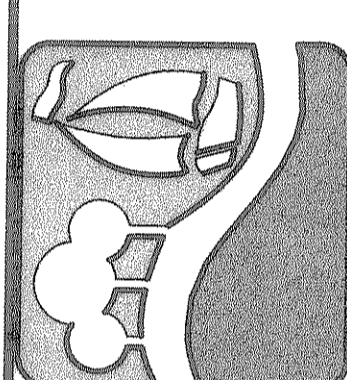
STA 6+45.00 LINE "K"
REMOVE EXISTING
TYPE "B" HEADWALL
& CONNECT TO EXIST.
48" RCP
E = 543.96±

$Q_{100} = 11.1$ cfs
 $S_f = 0.49\%$
 $V = 4.6$ fps
 $V^2/2g = 0.33'$
 $Q_c = 32.6$ cfs

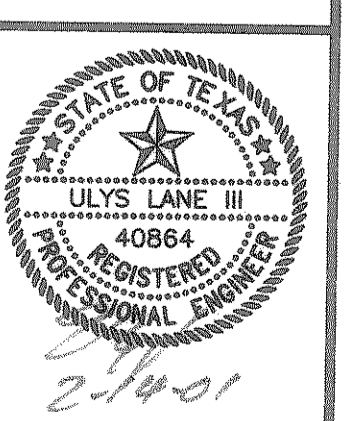
STA 9+69.30 LAT. "K-7"
15' REC. CURB INLET
E = 544.88

RECORD PLANS
12-17-2002

PREPARED BY:
WIA WIER & ASSOCIATES, INC.
ENGINEERS SURVEYORS LAND PLANNERS
4300 BELTWAY PLACE SUITE 130 ARLINGTON, TEXAS 76018 METRO (817)467-7700
4108 HIGH CATER ROAD, SUITE 200 FORT WORTH, TEXAS 76155 METRO (817)355-9457



STORM DRAIN LINE "K"
PLAN & PROFILE
STA 5+00 TO END



COPYRIGHT ©
WIER & ASSOCIATES, INC.
LAST SHEET EDIT
DATE 01-30-2001
WAB 97057
SHEET NO.
21