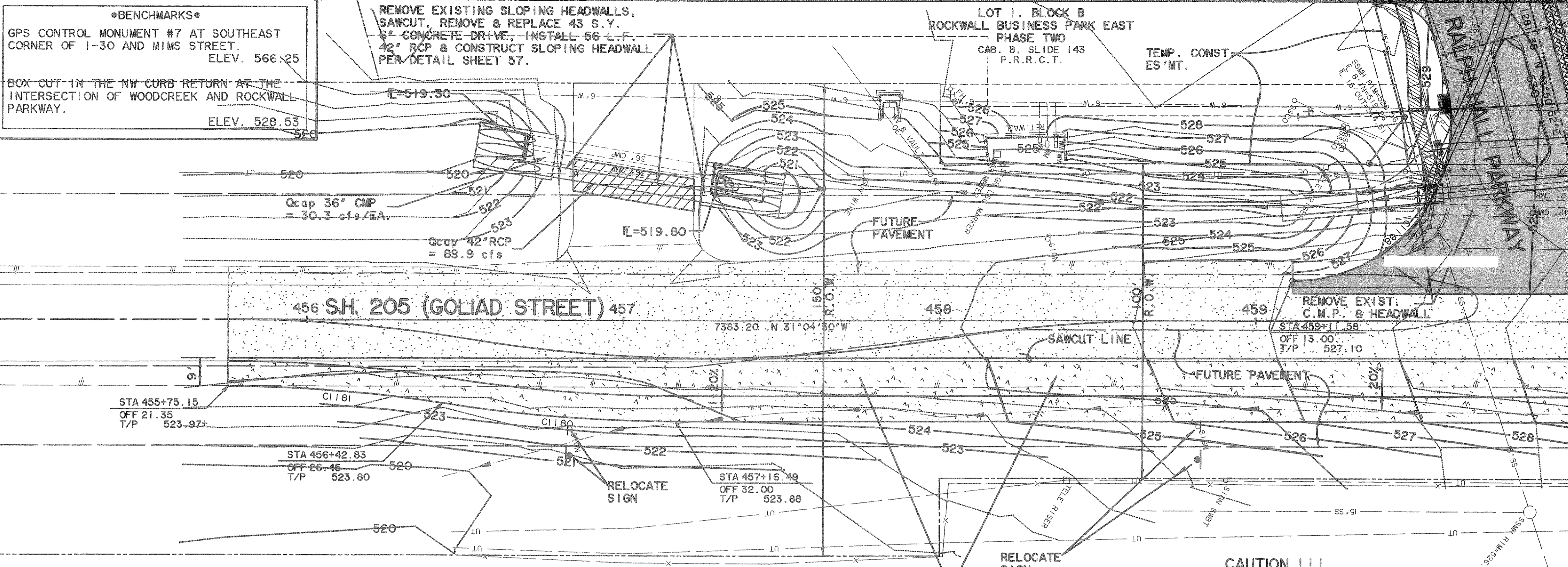


MATCH LINE STA 455+00

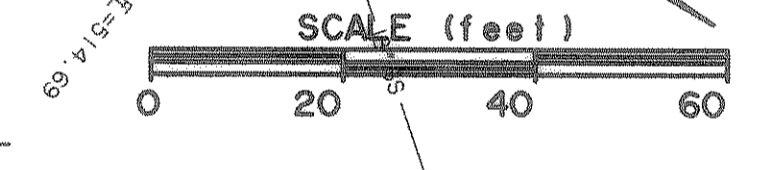
MATCH LINE STA 460+00



REFER TO SHEET 2 FOR TYPICAL SECTION

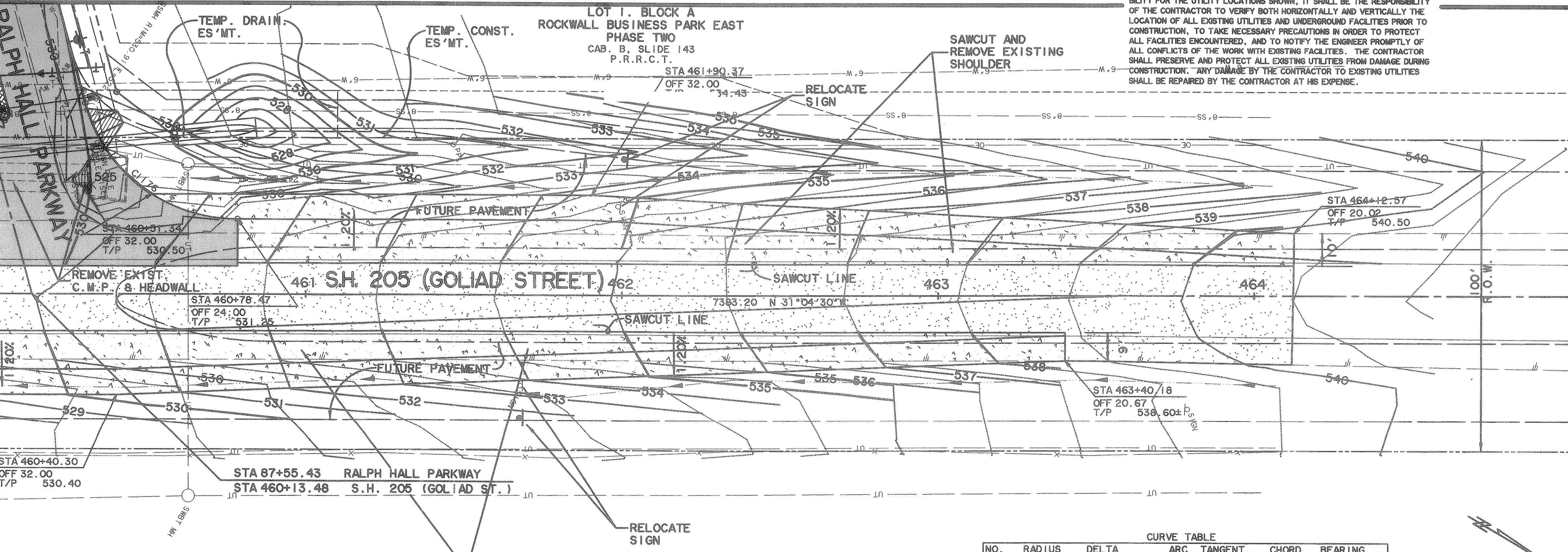
CAUTION !!!
UNDERGROUND UTILITIES

EXISTING UTILITIES AND UNDERGROUND FACILITIES INDICATED ON THESE PLANS HAVE BEEN LOCATED FROM REFERENCE INFORMATION SUPPLIED BY VARIOUS OWNERS OF THE FACILITIES. THE ENGINEER DOES NOT ACCEPT THE RESPONSIBILITY FOR THE UTILITY LOCATIONS SHOWN. IT SHALL BE THE RESPONSIBILITY OF THE CONTRACTOR TO VERIFY BOTH HORIZONTALLY AND VERTICALLY THE LOCATION OF ALL EXISTING UTILITIES AND UNDERGROUND FACILITIES PRIOR TO CONSTRUCTION, TO TAKE NECESSARY PRECAUTIONS IN ORDER TO PROTECT ALL FACILITIES ENCOUNTERED, AND TO NOTIFY THE ENGINEER PROMPTLY OF ALL CONFLICTS OF THE WORK WITH EXISTING FACILITIES. THE CONTRACTOR SHALL PRESERVE AND PROTECT ALL EXISTING UTILITIES FROM DAMAGE DURING CONSTRUCTION. ANY DAMAGE BY THE CONTRACTOR TO EXISTING UTILITIES SHALL BE REPAIRED BY THE CONTRACTOR AT HIS EXPENSE.



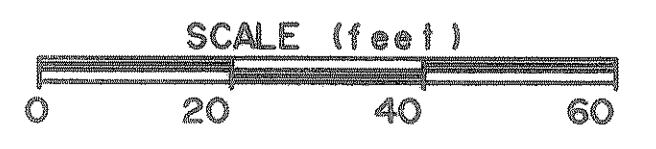
MATCH LINE STA 460+00

MATCH LINE STA 465+00



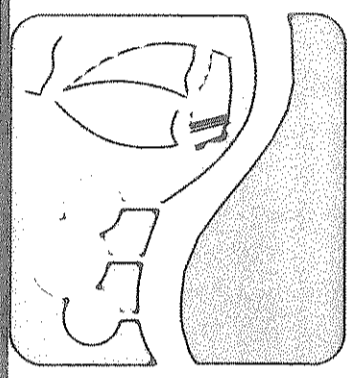
NOTE:
 EXISTING ASPHALT PAVEMENT REMOVAL SHALL BE CONSIDERED SUBSIDIARY ITEM TO UNCLASSIFIED EXCAVATION.

| CURVE TABLE | | | | | | |
|-------------|--------|------------|-------------|-------|---------|-------------|
| NO. | RADIUS | DELTA | ARC TANGENT | CHORD | BEARING | |
| 1176 | 50.00 | 74°55'22" | 65.36 | 38.31 | 60.82 S | 06°23'11" W |
| 1180 | 491.75 | 08°36'56" | 73.94 | 37.04 | 73.87 S | 26°46'02" E |
| 1181 | 451.75 | 08°36'56" | 67.93 | 34.03 | 67.87 N | 26°46'02" E |
| 1188 | 50.00 | 105°04'38" | 91.70 | 65.25 | 79.38 S | 83°36'49" E |



RECORD PLANS
 12-17-2002

PREPARED BY:
VIA WIER & ASSOCIATES, INC.
 ENGINEERS SURVEYORS LAND PLANNERS
 4300 BELLEVUE PLACE SUITE 130 ARLINGTON, TEXAS 76018 METRO (817) 467-7700
 8721 5th STREET FRESCO, TEXAS METRO (214) 307-8000
 www.viawier.com



S.H. 205 (GOLIAD STREET)
 PAVING PLAN
 STA 455+00 TO 465+00



COPYRIGHT ©
 WIER & ASSOCIATES, INC.
 LAST SHEET EDIT
 DATE 12-17-2002
 WA# 57057
SHEET NO.
 12

TIME 115.39 FILE: pave32.dwg