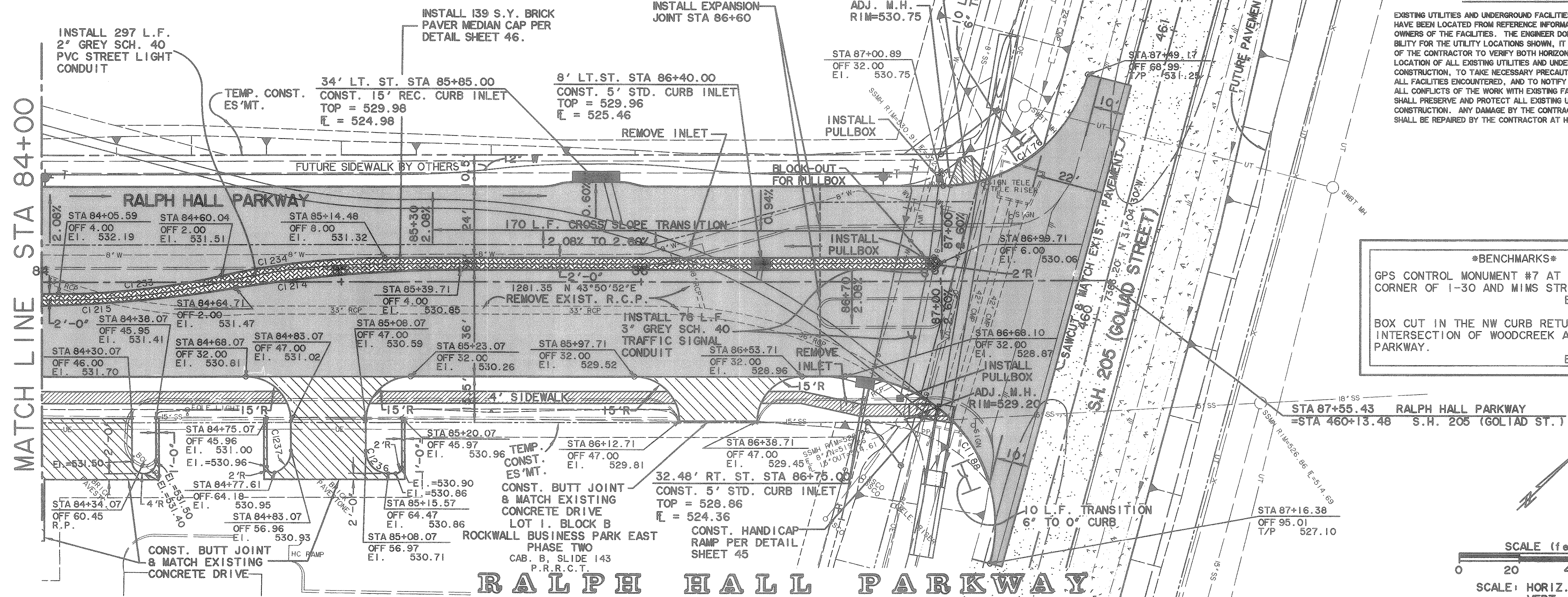
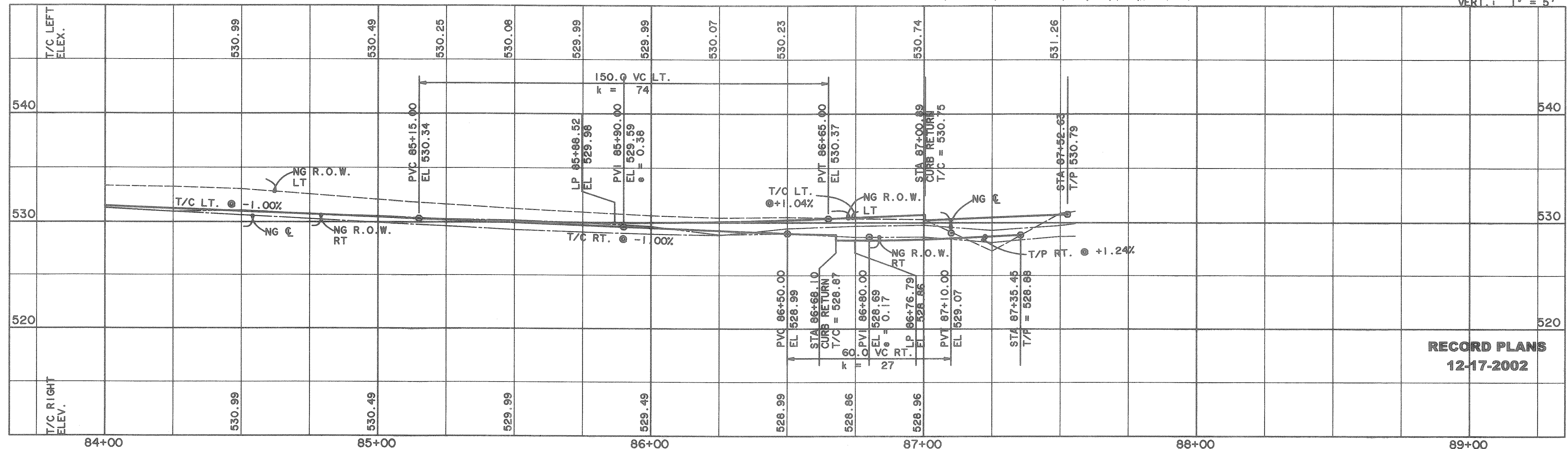
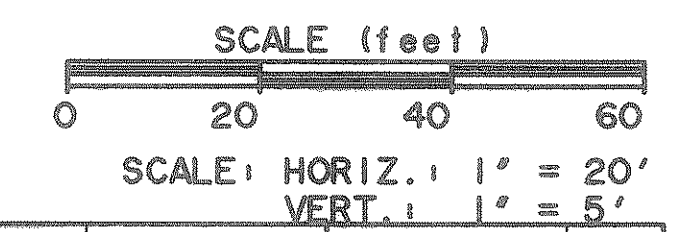


CURVE TABLE						
NO.	RADIUS	DELTA	ARC	TANGENT	CHORD	BEARING
1176	50.00	74°55'22"	65.38	38.31	60.82	S 06°23'11"W
1188	50.00	105°04'38"	91.70	65.25	79.38	S 83°36'49"E
1214	471.75	09°08'52"	75.32	37.74	75.24	N 39°16'26"E
1215	471.75	09°08'52"	75.32	37.74	75.24	S 39°16'26"W
1236	7.50	89°59'06"	11.78	7.50	10.61	S 88°51'19"W
1237	7.50	74°13'11"	9.72	5.67	9.05	S 09°02'33"E

LOT 1, BLOCK A
 ROCKWALL BUSINESS PARK EAST
 PHASE TWO
 CAB. B, SLIDE 143
 P.R.R.C.T.



BENCHMARK
 GPS CONTROL MONUMENT #7 AT SOUTHEAST CORNER OF I-30 AND MIMS STREET. ELEV. 566.25
 BOX CUT IN THE NW CURB RETURN AT THE INTERSECTION OF WOODCREEK AND ROCKWALL PARKWAY. ELEV. 528.53

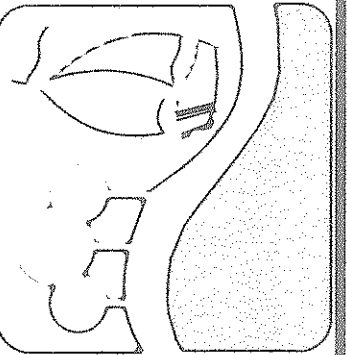


RECORD PLANS
 12-17-2002

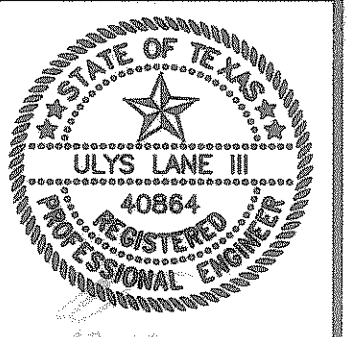
CAUTION !!!
 UNDERGROUND UTILITIES

EXISTING UTILITIES AND UNDERGROUND FACILITIES INDICATED ON THESE PLANS HAVE BEEN LOCATED FROM REFERENCE INFORMATION SUPPLIED BY VARIOUS OWNERS OF THE FACILITIES. THE ENGINEER DOES NOT ACCEPT THE RESPONSIBILITY FOR THE UTILITY LOCATIONS SHOWN. IT SHALL BE THE RESPONSIBILITY OF THE CONTRACTOR TO VERIFY BOTH HORIZONTALLY AND VERTICALLY THE LOCATION OF ALL EXISTING UTILITIES AND UNDERGROUND FACILITIES PRIOR TO CONSTRUCTION. TO TAKE NECESSARY PRECAUTIONS IN ORDER TO PROTECT ALL FACILITIES ENCOUNTERED, AND TO NOTIFY THE ENGINEER PROMPTLY OF ALL CONFLICTS OF THE WORK WITH EXISTING FACILITIES. THE CONTRACTOR SHALL PRESERVE AND PROTECT ALL EXISTING UTILITIES FROM DAMAGE DURING CONSTRUCTION. ANY DAMAGE BY THE CONTRACTOR TO EXISTING UTILITIES SHALL BE REPAIRED BY THE CONTRACTOR AT HIS EXPENSE.

PREPARED BY:
WIA WIER & ASSOCIATES, INC.
 ENGINEERS SURVEYORS LAND PLANNERS
 4300 BELTWAY PLACE SUITE 130 ARLINGTON, TEXAS 76018 METRO (817)467-7700
 8721 5th STREET FRODO, TEXAS METRO (214)367-4000
 www.wierassociates.com



RALPH HALL PARKWAY
 PAVING PLAN & PROFILE
 STA 84+00 TO END



COPYRIGHT ©
 WIER & ASSOCIATES, INC.
 LAST SHEET EDIT
 DATE 12-17-2002
 WA# 97067

SHEET NO.
 11

TIME: 11:40 FILE: paves31.dwg