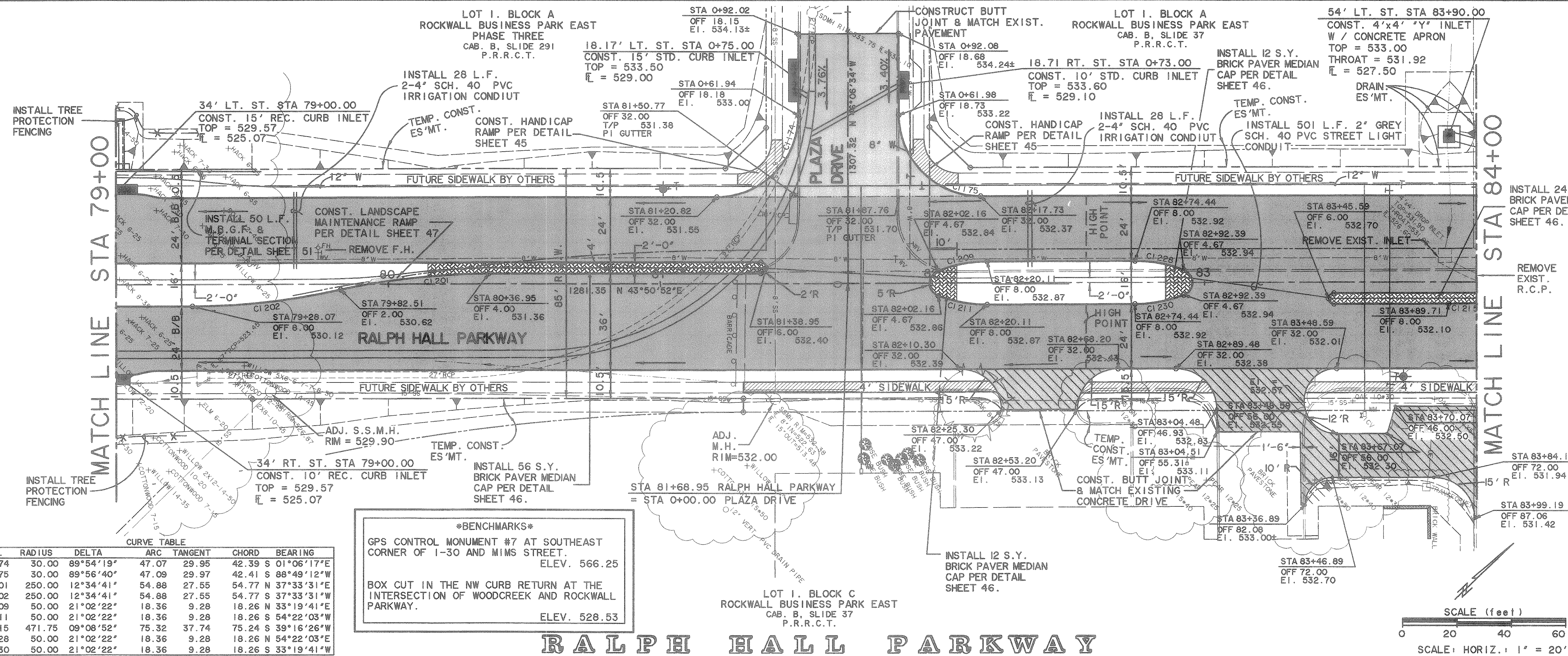
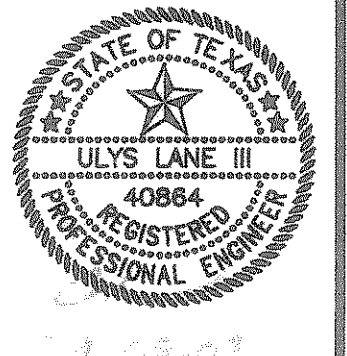


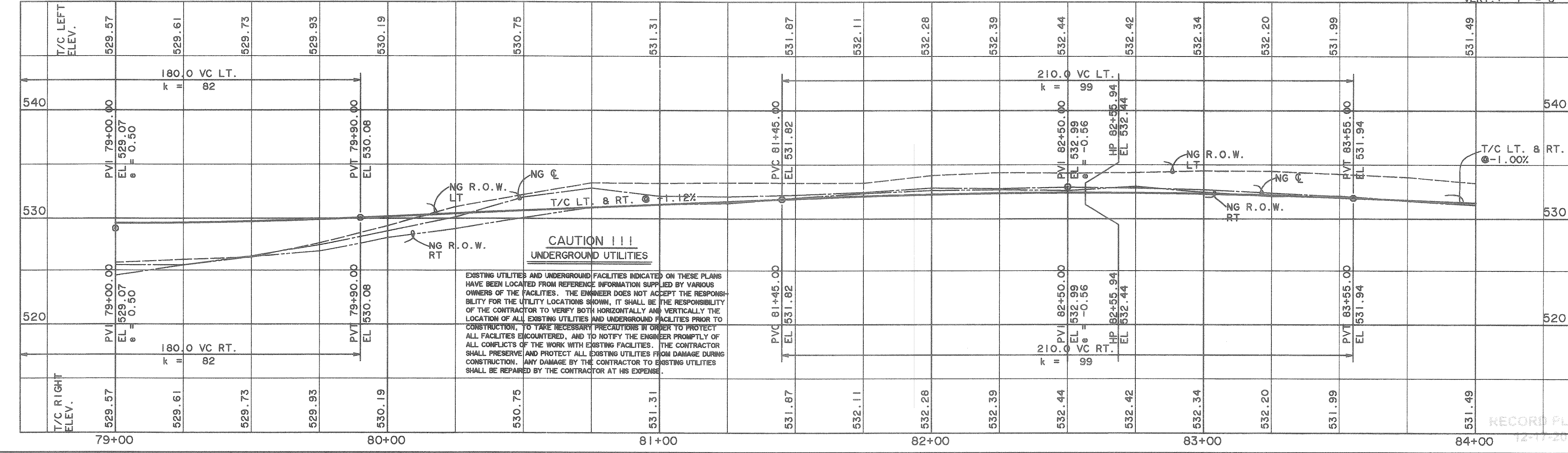
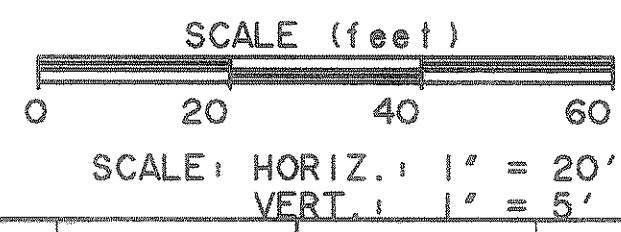
**RALPH HALL PARKWAY
 PAVING PLAN & PROFILE
 STA 79+00 TO 84+00**



CURVE TABLE

NO.	RADIUS	DELTA	ARC	TANGENT	CHORD	BEARING
1174	30.00	89°54'19"	47.07	29.95	42.39	S 01°06'17"E
1175	30.00	89°56'40"	47.09	29.97	42.41	S 88°49'12"W
1201	250.00	12°34'41"	54.88	27.55	54.77	N 37°33'31"E
1202	250.00	12°34'41"	54.88	27.55	54.77	S 37°33'31"W
1209	50.00	21°02'22"	18.36	9.28	18.26	N 33°19'41"E
1211	50.00	21°02'22"	18.36	9.28	18.26	S 54°22'03"W
1215	471.75	09°08'52"	75.32	37.74	75.24	S 39°16'26"W
1228	50.00	21°02'22"	18.36	9.28	18.26	S 54°22'03"E
1230	50.00	21°02'22"	18.36	9.28	18.26	S 33°19'41"W

BENCHMARKS
 GPS CONTROL MONUMENT #7 AT SOUTHEAST CORNER OF 1-30 AND MIMS STREET.
 ELEV. 566.25
 BOX CUT IN THE NW CURB RETURN AT THE INTERSECTION OF WOODCREEK AND ROCKWALL PARKWAY.
 ELEV. 528.53



**CAUTION !!!
 UNDERGROUND UTILITIES**
 EXISTING UTILITIES AND UNDERGROUND FACILITIES INDICATED ON THESE PLANS HAVE BEEN LOCATED FROM REFERENCE INFORMATION SUPPLIED BY VARIOUS OWNERS OF THE FACILITIES. THE ENGINEER DOES NOT ACCEPT THE RESPONSIBILITY FOR THE UTILITY LOCATIONS SHOWN, IT SHALL BE THE RESPONSIBILITY OF THE CONTRACTOR TO VERIFY BOTH HORIZONTALLY AND VERTICALLY THE LOCATION OF ALL EXISTING UTILITIES AND UNDERGROUND FACILITIES PRIOR TO CONSTRUCTION, TO TAKE NECESSARY PRECAUTIONS IN ORDER TO PROTECT ALL FACILITIES ENCOUNTERED, AND TO NOTIFY THE ENGINEER PROMPTLY OF ALL CONFLICTS OF THE WORK WITH EXISTING FACILITIES. THE CONTRACTOR SHALL PRESERVE AND PROTECT ALL EXISTING UTILITIES FROM DAMAGE DURING CONSTRUCTION. ANY DAMAGE BY THE CONTRACTOR TO EXISTING UTILITIES SHALL BE REPAIRED BY THE CONTRACTOR AT HIS EXPENSE.

TIME 12:27 FILE: paving30.dwg

RECORD PLANS
 12-11-2002