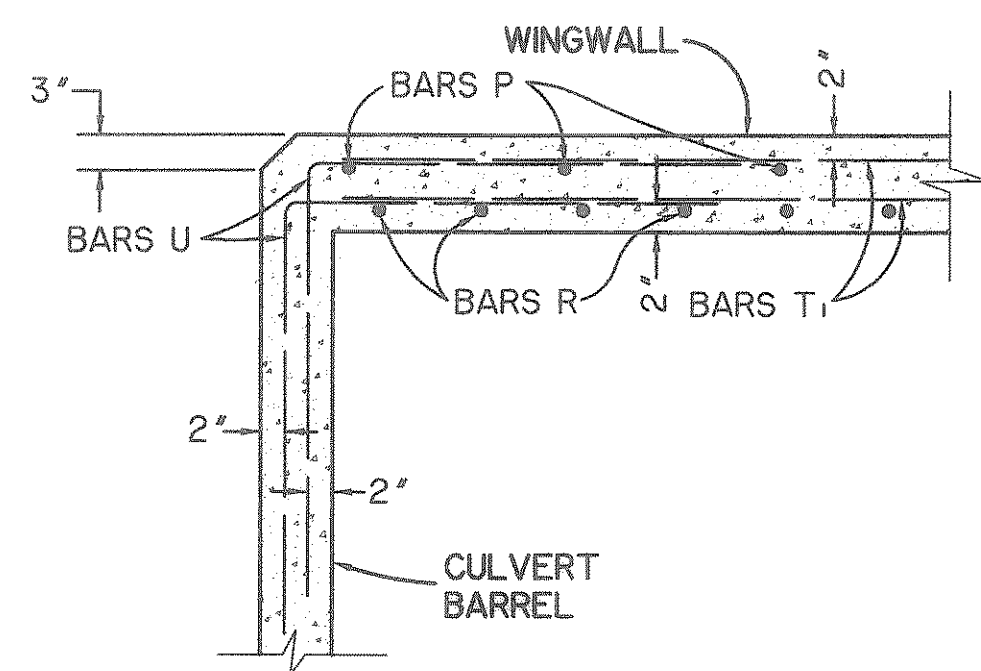
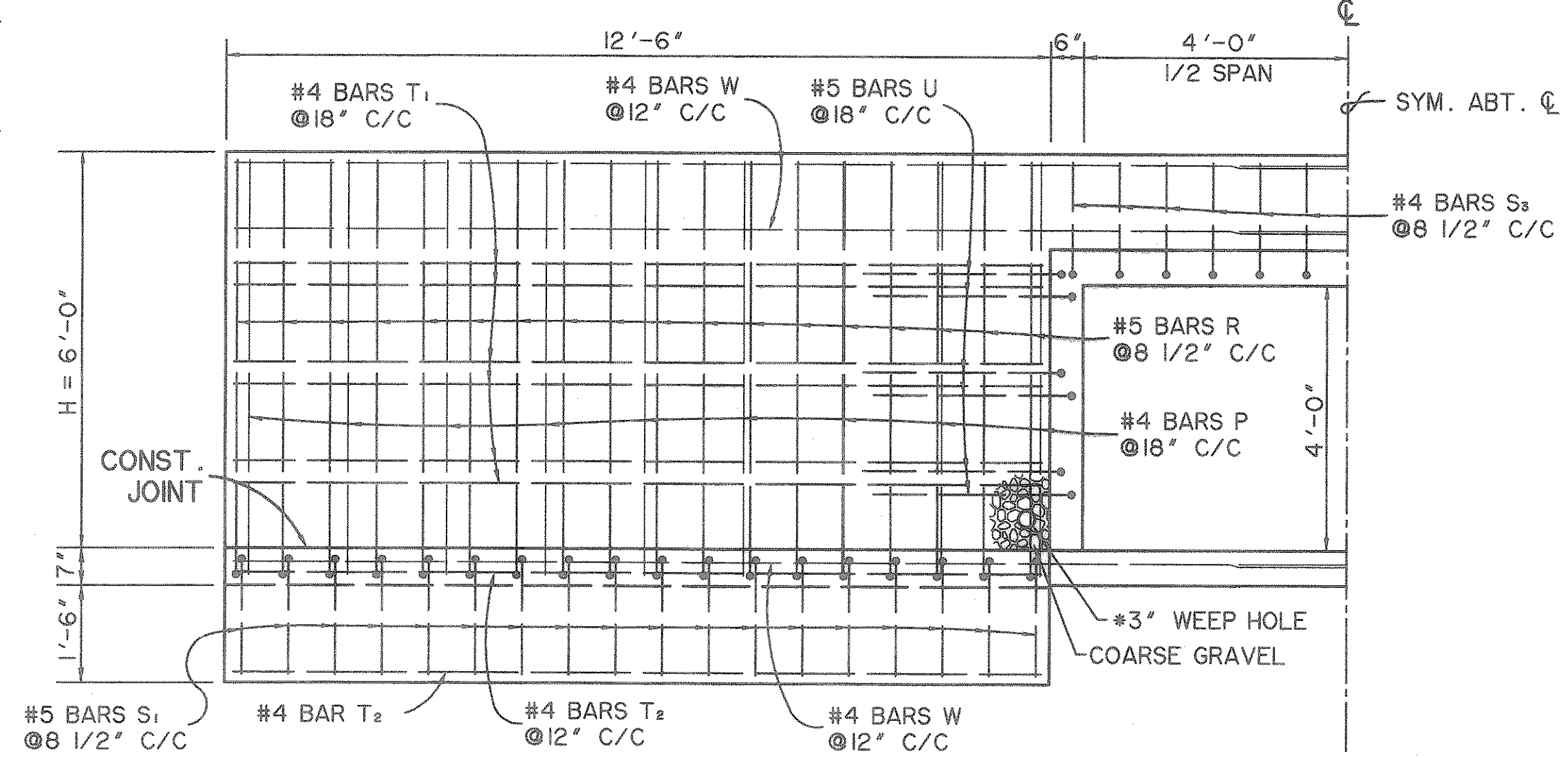
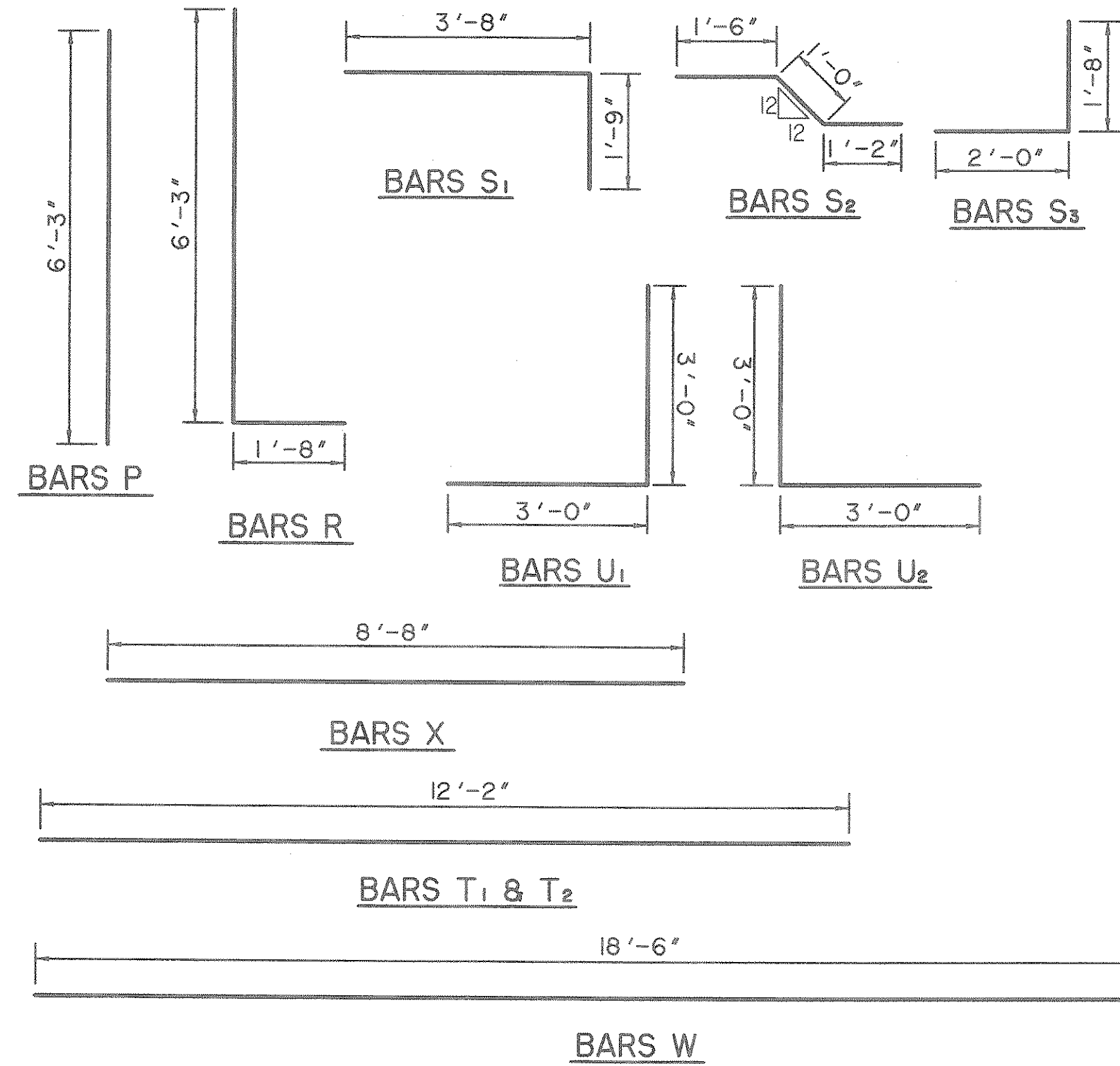


8'x4' CULVERT UPSTREAM  
PARALLEL HEADWALL PLAN  
N.T.S.

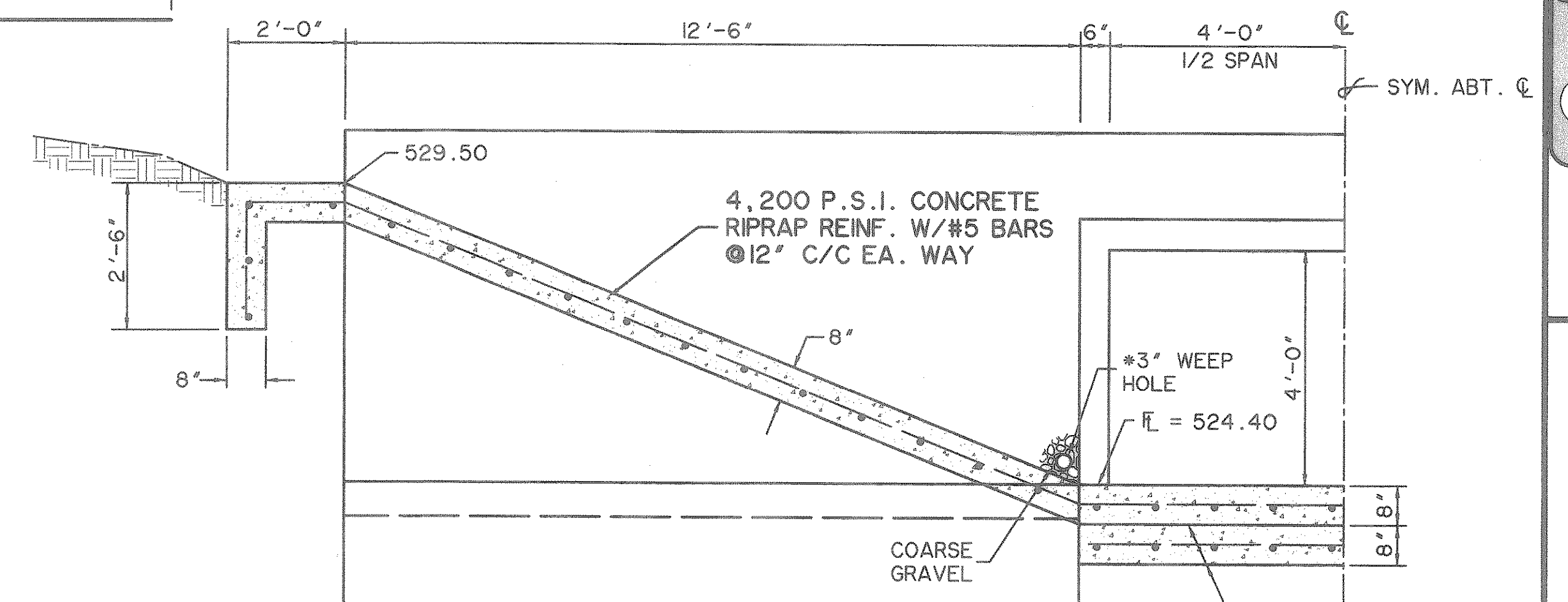


CORNER DETAIL  
N.T.S.

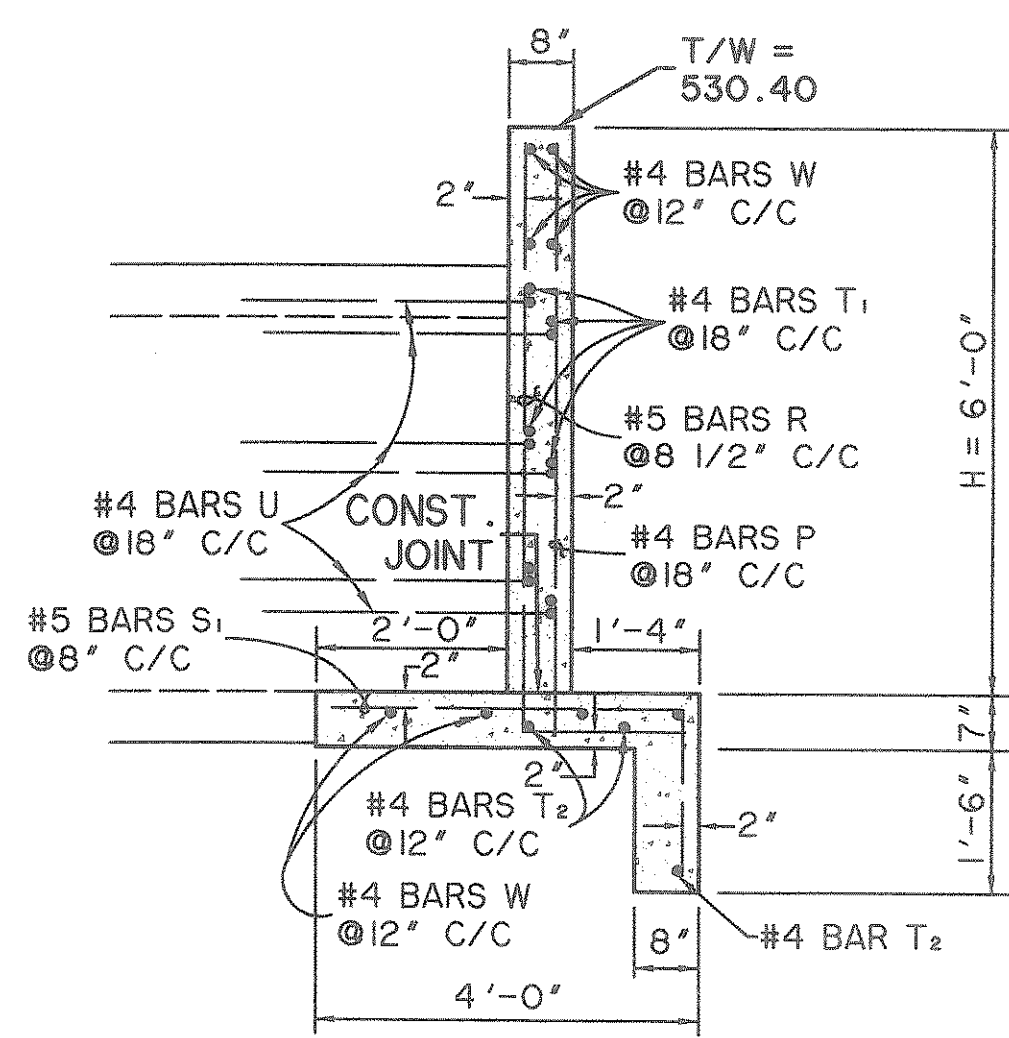


HALF SECTION "C-C"  
N.T.S.

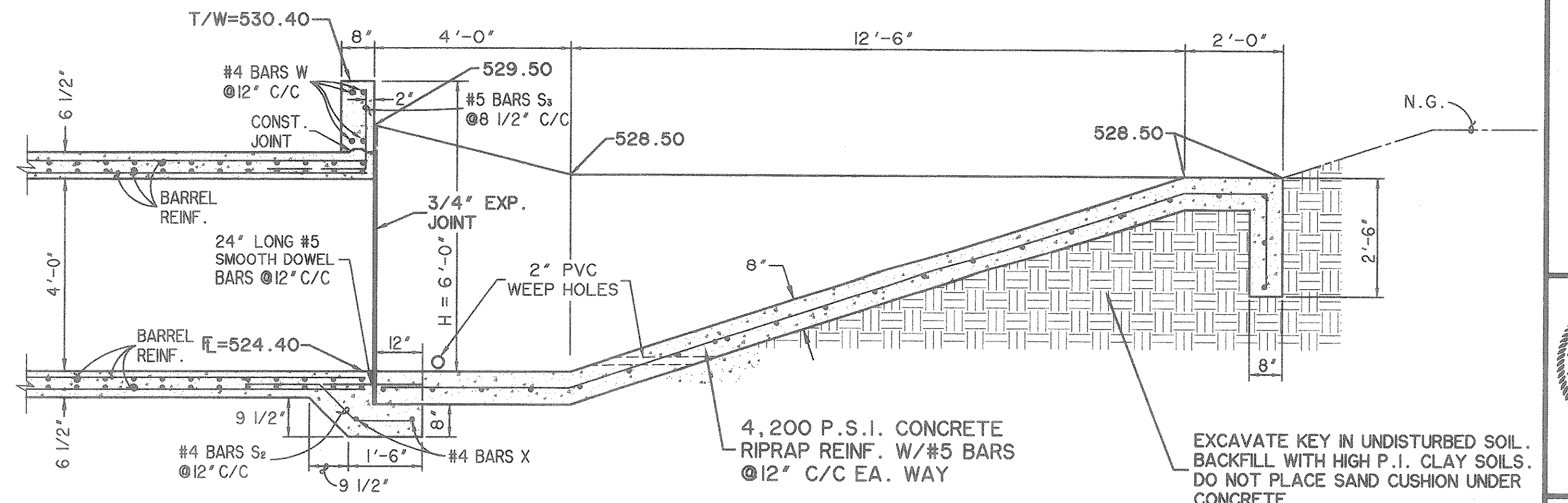
\* PLACE ONE WEEP HOLE PER WING AT APPROXIMATE EARTH LINE AS SHOWN. FILL AROUND INLET OF DRAINS WITH BROKEN STONE OR COARSE GRAVEL TO PERMIT FREE PASSAGE OF WATER.



HALF SECTION "D-D"  
N.T.S.



SECTION "A-A"  
N.T.S.



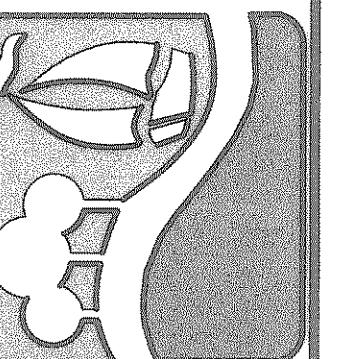
SECTION "B-B"  
N.T.S.

EXCAVATE KEY IN UNDISTURBED SOIL. BACKFILL WITH HIGH P.I. CLAY SOILS. DO NOT PLACE SAND CUSHION UNDER CONCRETE.

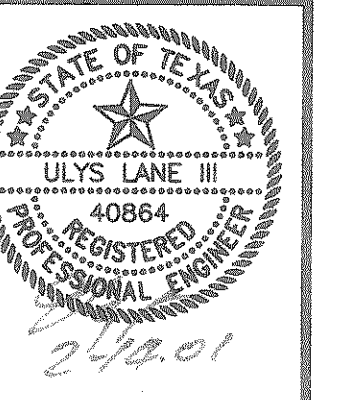
- NOTES:
1. CHAMFER ALL EXPOSED CORNERS 3/4"
  2. ALL DIMENSIONS RELATING TO REINFORCING STEEL ARE TO CENTERS OF BARS.
  3. THE BOTTOM SLAB OF THE BARREL, WING FOOTINGS AND TOE WALLS SHALL BE PLACED IN ONE CONTINUOUS OPERATION.
  4. WINGS SHALL BE CONSTRUCTED MONOLITHIC WITH THE BARREL. IF CONSTRUCTION JOINTS ARE USED NEAR THE TOP OF THE BARREL WALLS THESE JOINTS SHALL CONTINUE THROUGH THE WINGS.

FILE: CULVERT4.dwg  
TIME: 14:19

PREPARED BY:  
**WIER & ASSOCIATES, INC.**  
ENGINEERS SURVEYORS LAND PLANNERS  
4300 BELTWAY PLACE, SUITE 130 ARLINGTON, TEXAS 76016 METRO (817)467-7700  
4108 AMON CENTER BLVD., SUITE 200 FORT WORTH, TEXAS 76155 METRO (817)355-9457



8'x4' BOX CULVERT  
HEADWALL DETAILS



COPYRIGHT ©  
WIER & ASSOCIATES, INC.  
LAST SHEET EDIT  
DATE 02-12-2001  
WA# 97057  
**SHEET NO. 50B**

RECORD PLANS  
12-17-2002