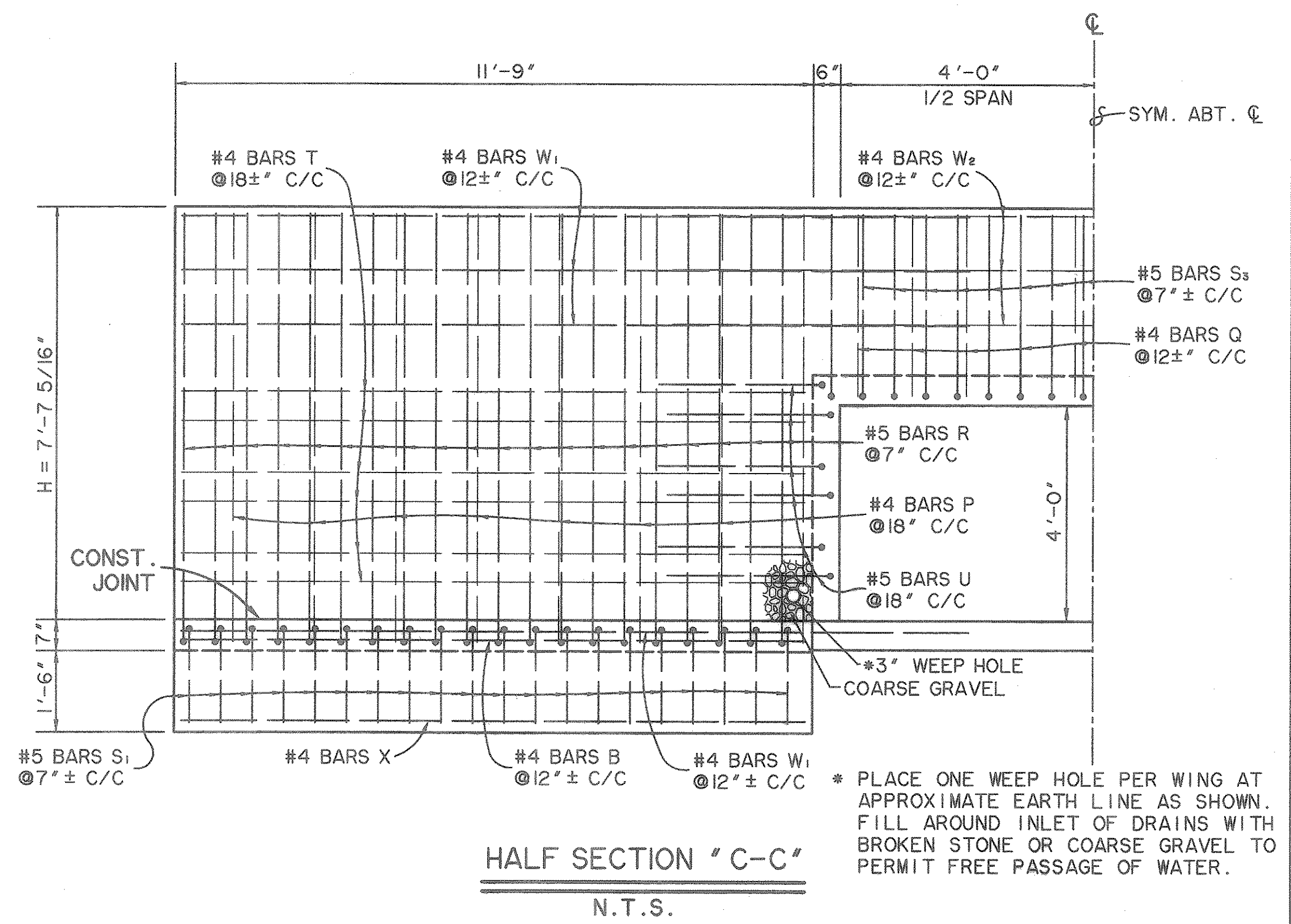
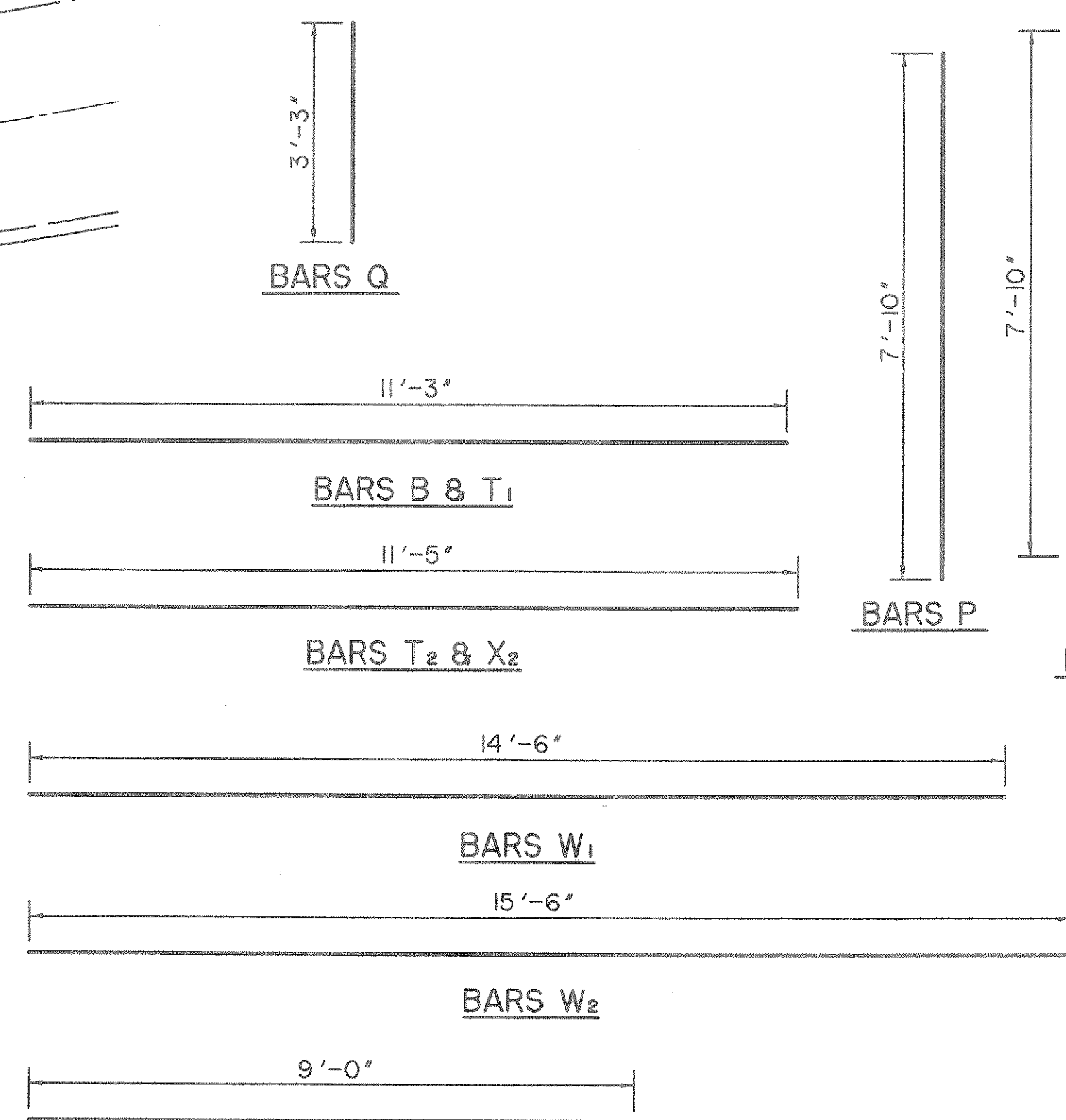


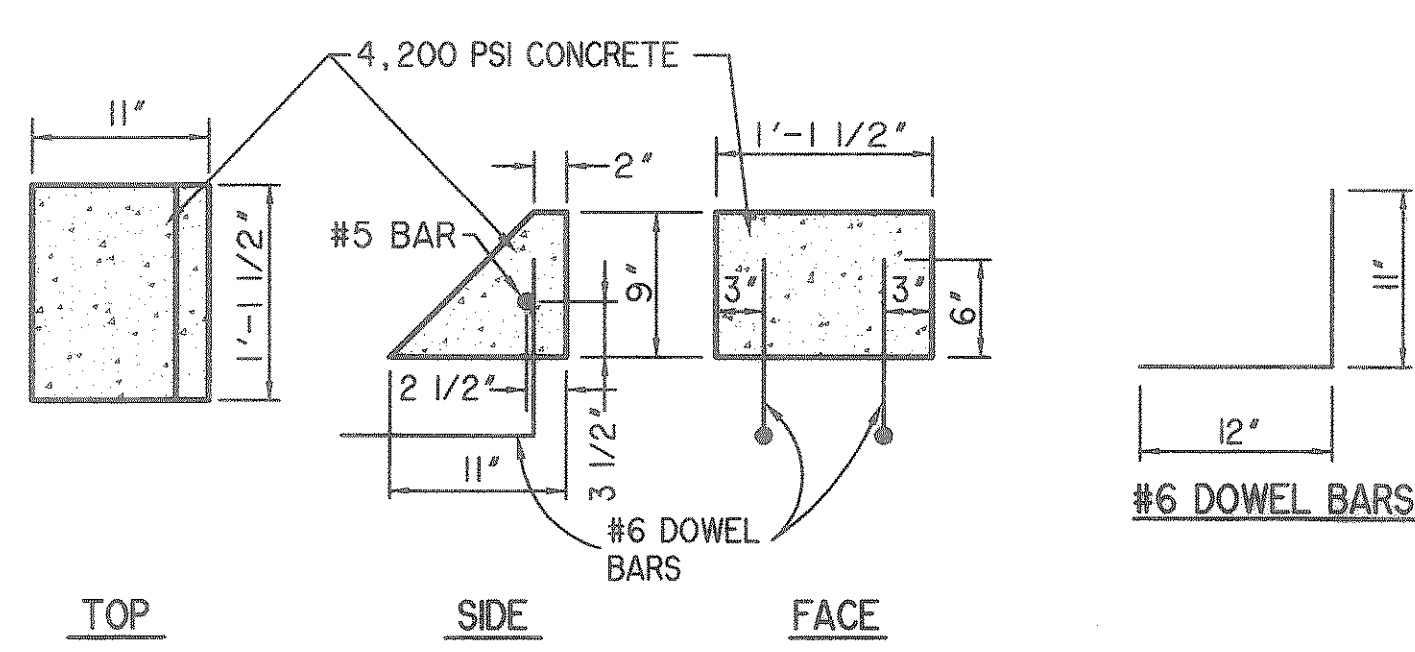
8'x4' SC-15° SKEW DOWNSTREAM  
CULVERT PARALLEL HEADWALL PLAN  
N.T.S.

- NOTES:
1. CHAMFER ALL EXPOSED CORNERS 3/4".
  2. ALL DIMENSIONS RELATING TO REINFORCING STEEL ARE TO CENTERS OF BARS.
  3. THE BOTTOM SLAB OF THE BARREL, WING FOOTINGS AND TOE WALLS SHALL BE PLACED IN ONE CONTINUOUS OPERATION.
  4. WINGS SHALL BE CONSTRUCTED MONOLITHIC WITH THE BARREL. IF CONSTRUCTION JOINTS ARE USED NEAR THE TOP OF THE BARREL WALLS THESE JOINTS SHALL CONTINUE THROUGH THE WINGS.

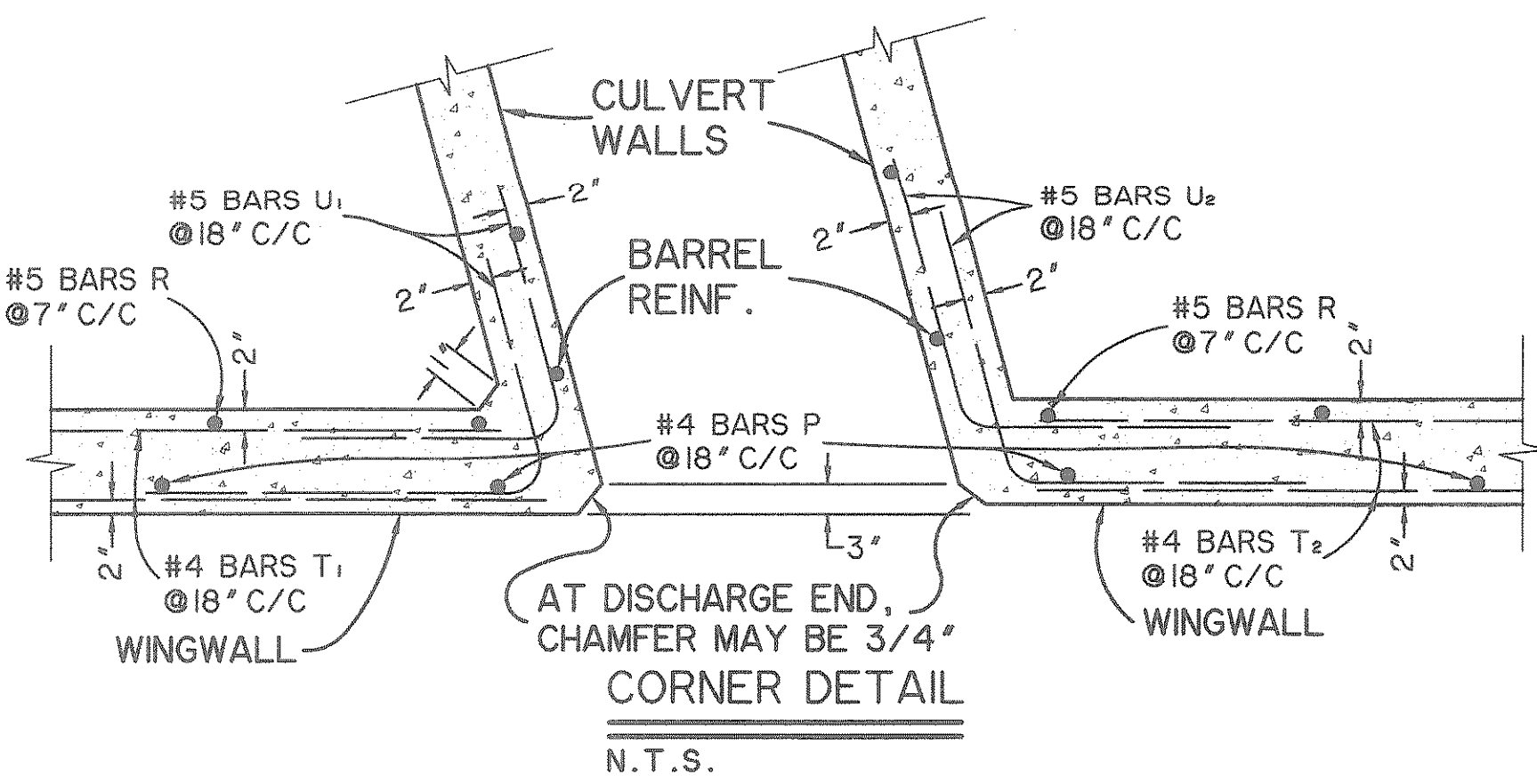


HALF SECTION "C-C"  
N.T.S.

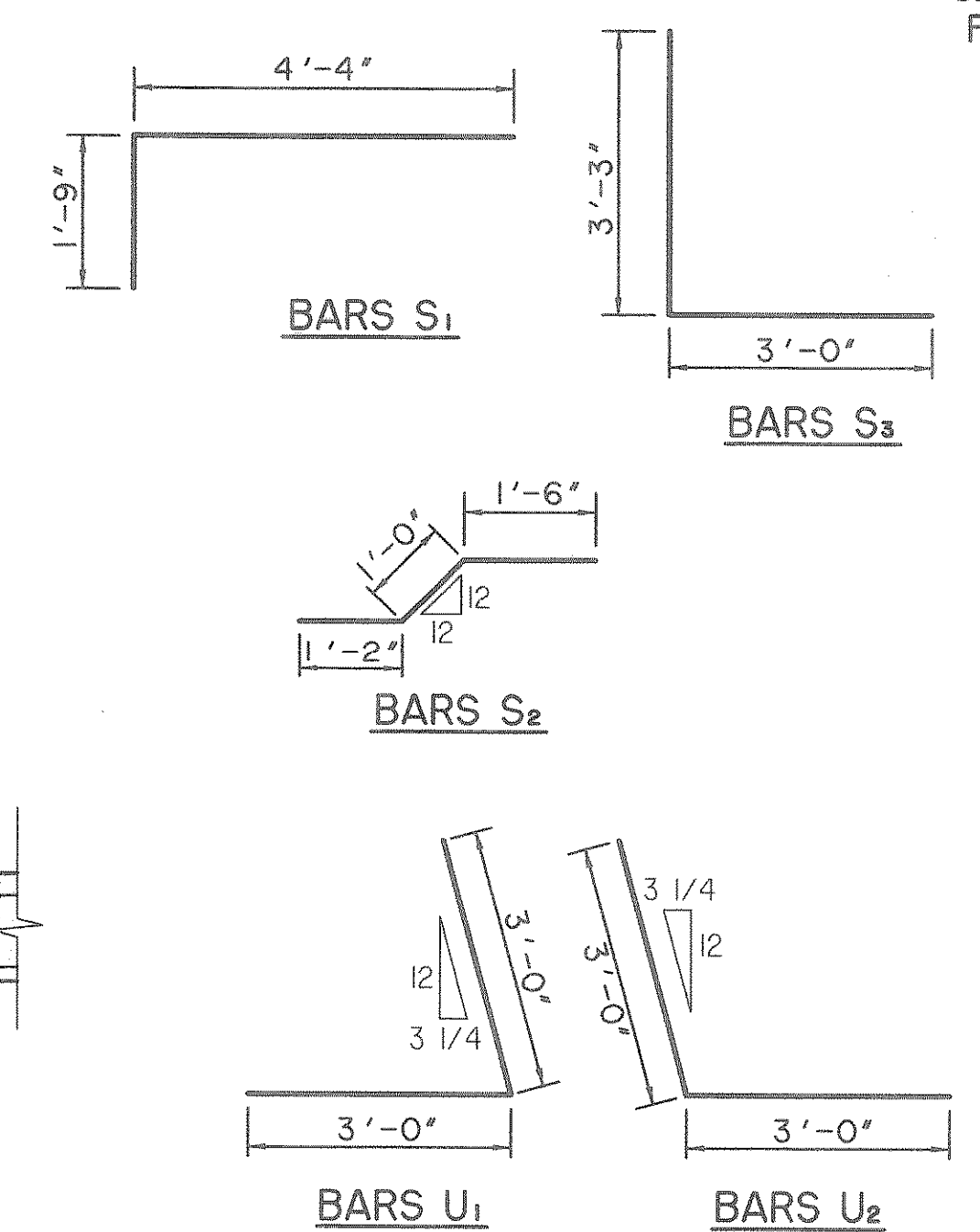
\* PLACE ONE WEEP HOLE PER WING AT APPROXIMATE EARTH LINE AS SHOWN. FILL AROUND INLET OF DRAINS WITH BROKEN STONE OR COARSE GRAVEL TO PERMIT FREE PASSAGE OF WATER.



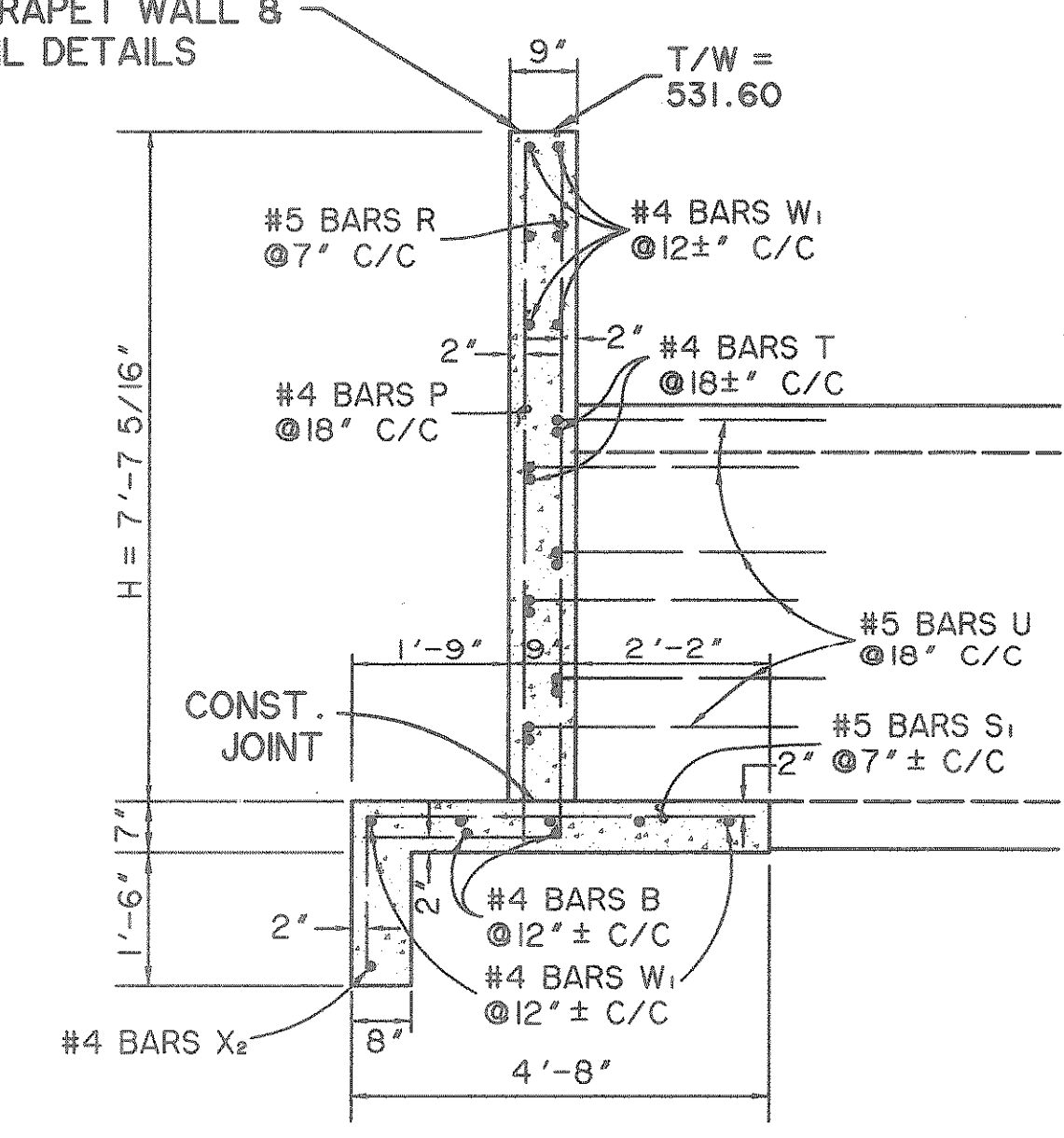
VELOCITY DISSIPATORS  
N.T.S.



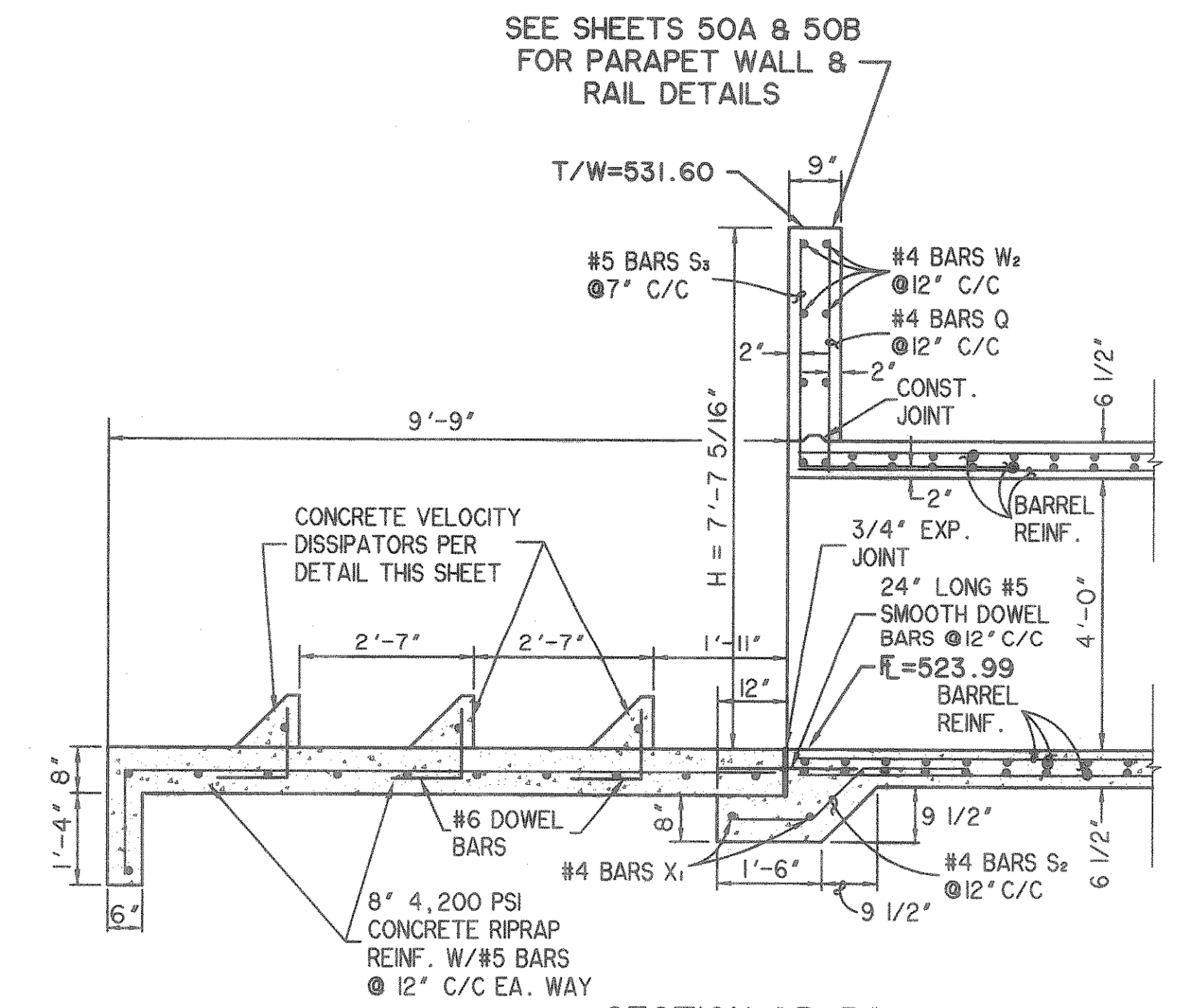
AT DISCHARGE END,  
CHAMFER MAY BE 3/4"  
CORNER DETAIL  
N.T.S.



SEE SHEETS 50A & 50B  
FOR PARAPET WALL &  
RAIL DETAILS



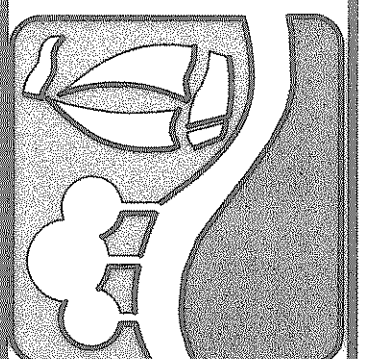
SECTION "A-A"  
N.T.S.



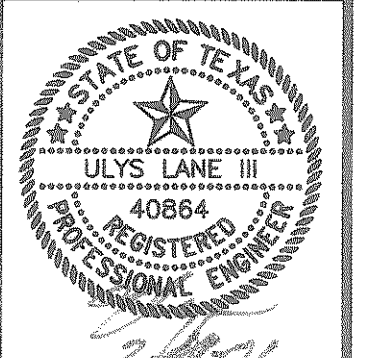
SECTION "B-B"  
APRON DETAIL  
N.T.S.

RECORD PLANS  
12-17-2002

PREPARED BY:  
**WIA WIER & ASSOCIATES, INC.**  
ENGINEERS SURVEYORS LAND PLANNERS  
4300 BELTWAY PLACE, SUITE 130 ARLINGTON, TEXAS 76010 METRO (817) 467-7700  
4106 ANTON CARRIER BLVD., SUITE 200 FORT WORTH, TEXAS 76155 (817) 355-9457



8'x4' BOX CULVERT  
HEADWALL DETAILS



COPYRIGHT ©  
WIER & ASSOCIATES, INC.  
LAST SHEET EDIT  
DATE 02-09-2002  
WA# 97057  
**SHEET NO. 56A**

FILE: CULVERT2.dwg  
TIME: 71.01