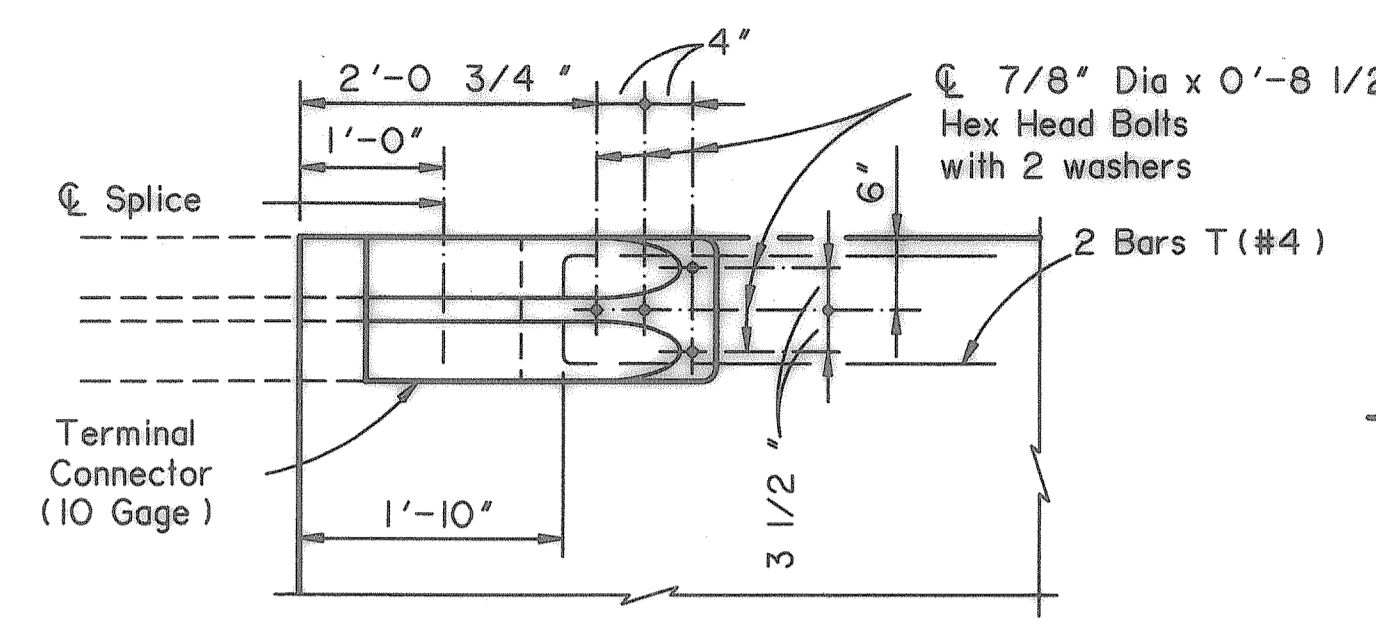


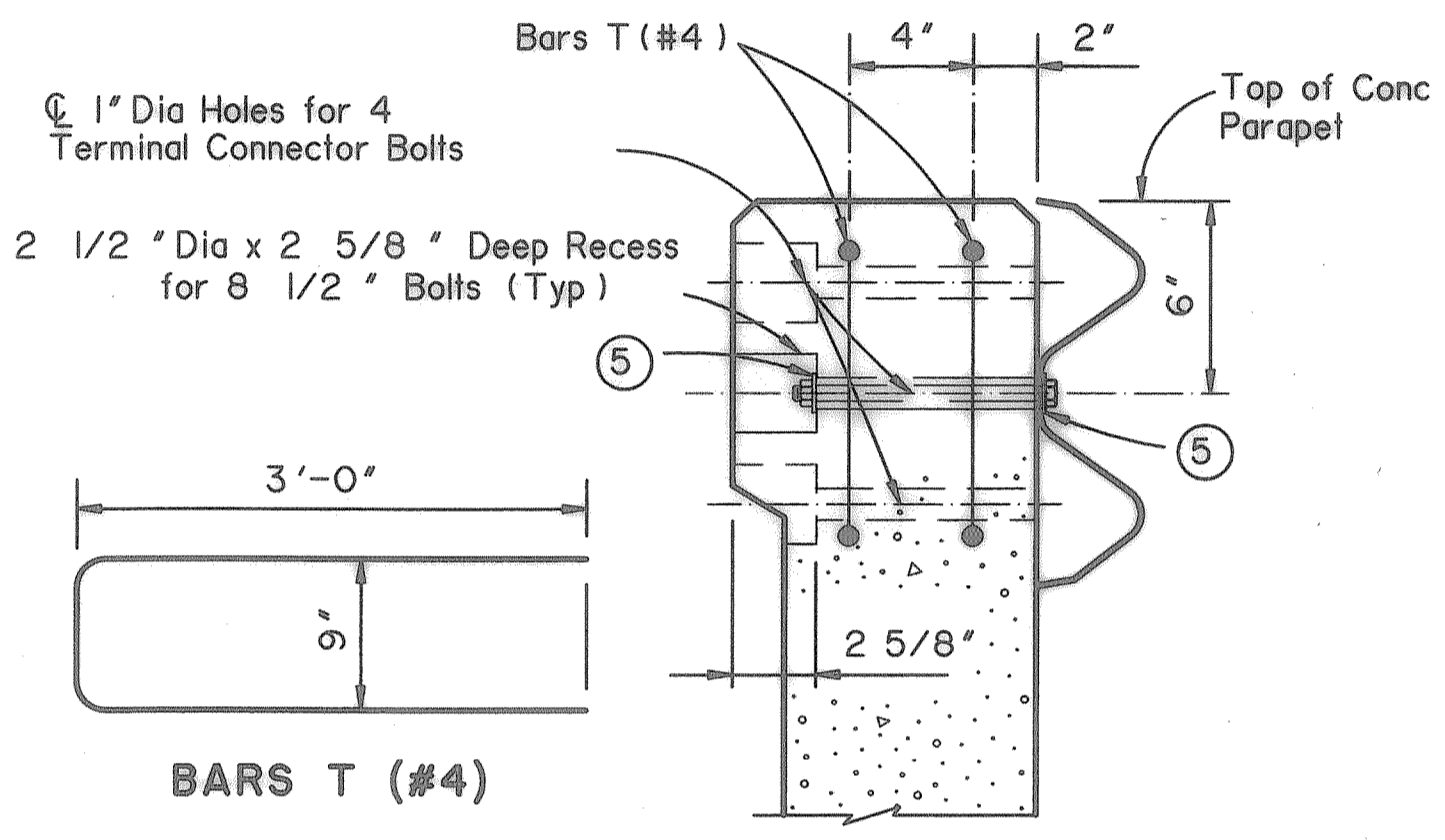
DISCLAIMER: The use of this standard is governed by the "Texas Engineering Practice Act". No warranty of any kind is made by TxDOT for any purpose whatsoever. TxDOT assumes no responsibility for the conversion of this standard to other formats or for incorrect results or damages resulting from its use.

ACC: (LEVEL 1, 2 for English, 1, 3 for Metric) LEVELS DISPLAYED: 1 2

② Metal Beam Guard Fence must be attached to the bridge rail and extended along the embankment unless shown otherwise on the plans. See plan sheet for details and length for payment. The Splice between the approach guard rail and the Terminal Connector shall be with the normal 8 bolts.



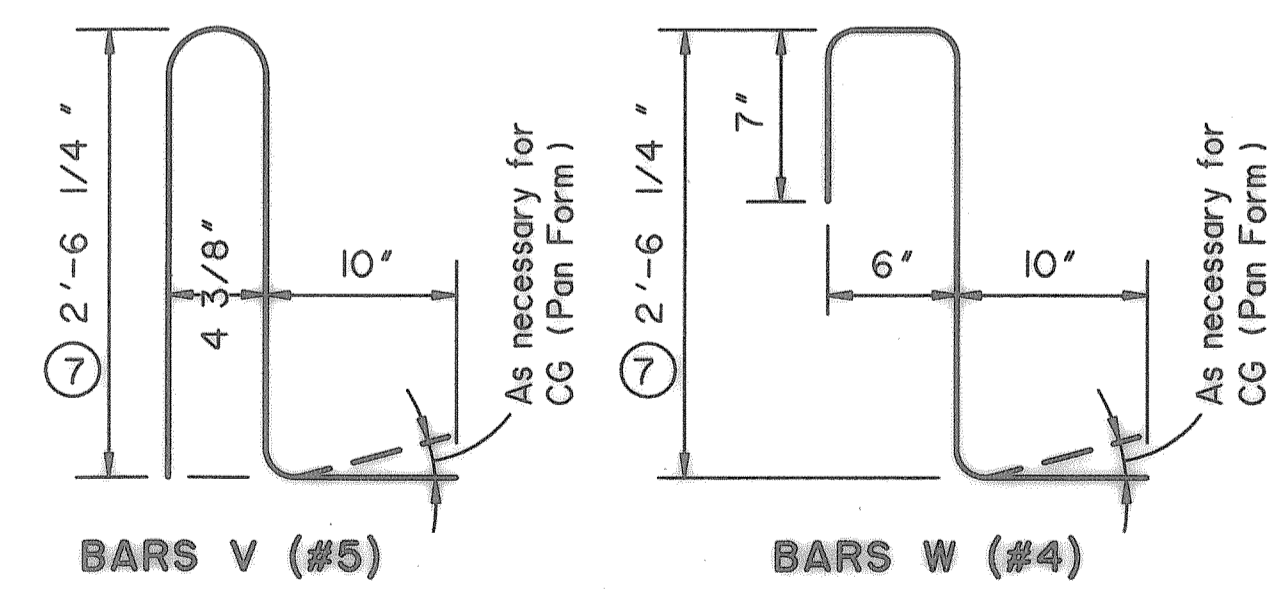
TERMINAL CONNECTION



SECTION THRU TERMINAL CONNECTION

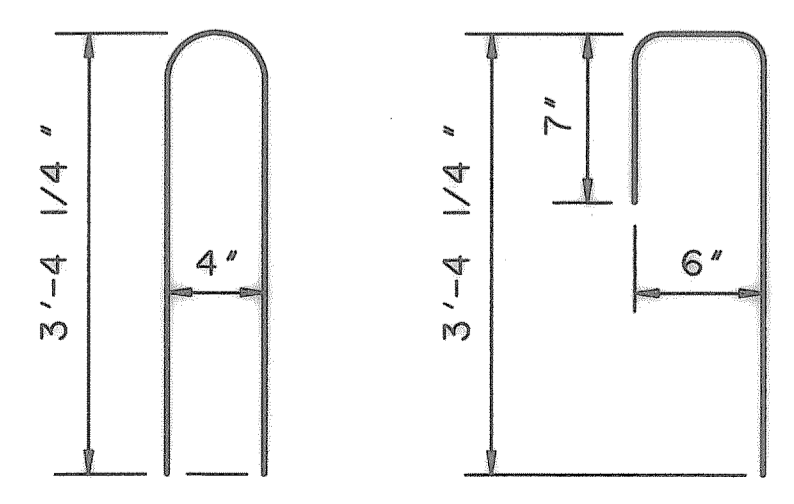
⑤ 1 3/4 inch O.D. Washers req'd under Bolt Heads & Nuts

⑦ Length shown for 5 inch bar embedment with no overlap. Adjust as required.



BARS V (#5)

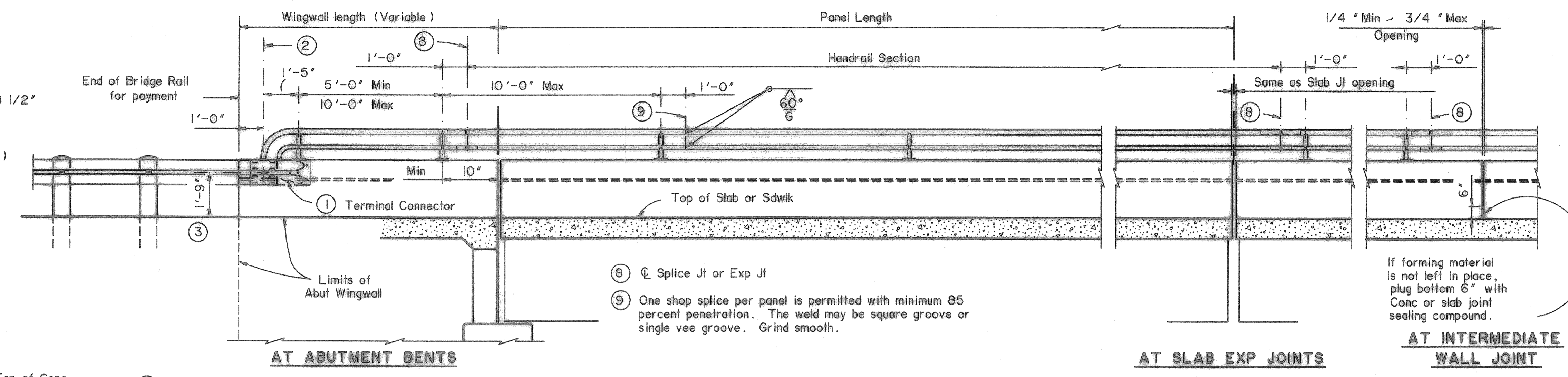
BARS W (#4)



BARS U (#5)

BARS S (#4)

⑩ To fit inside of Abut Wing reinf



AT ABUTMENT BENTS

⑧ C Splice Jt or Exp Jt
⑨ One shop splice per panel is permitted with minimum 85 percent penetration. The weld may be square groove or single vee groove. Grind smooth.

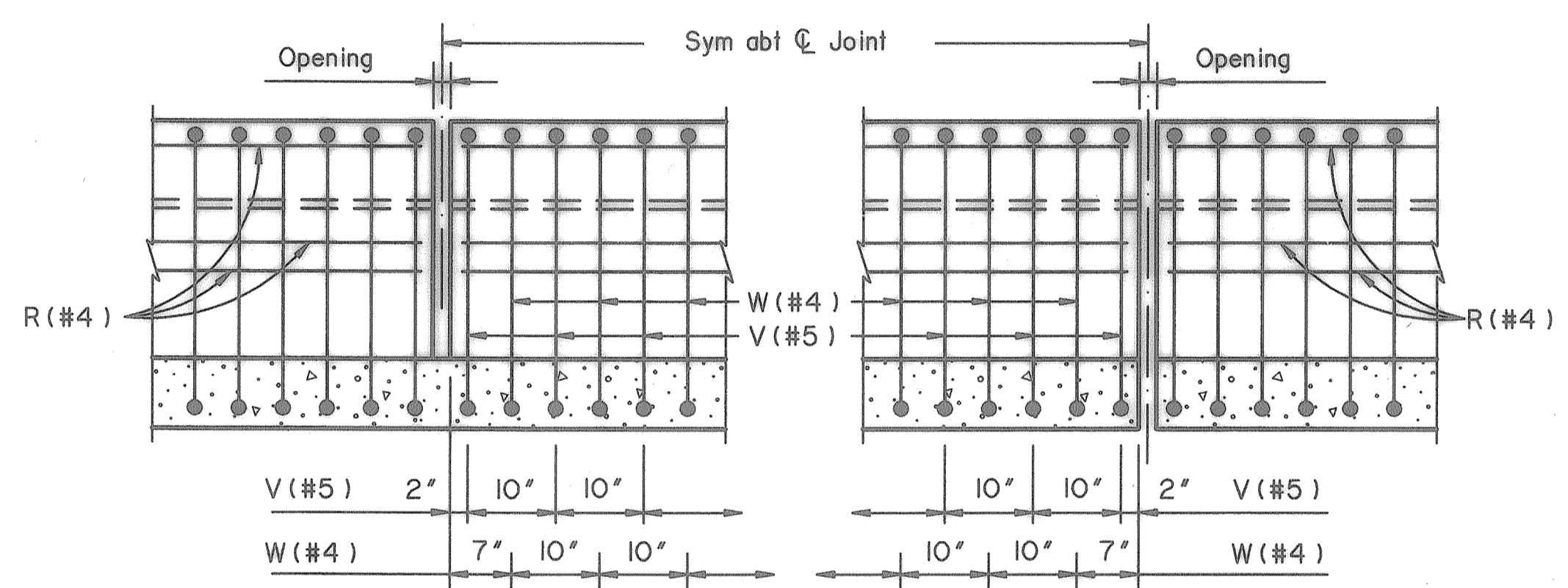
AT SLAB EXP JOINTS

AT INTERMEDIATE WALL JOINT

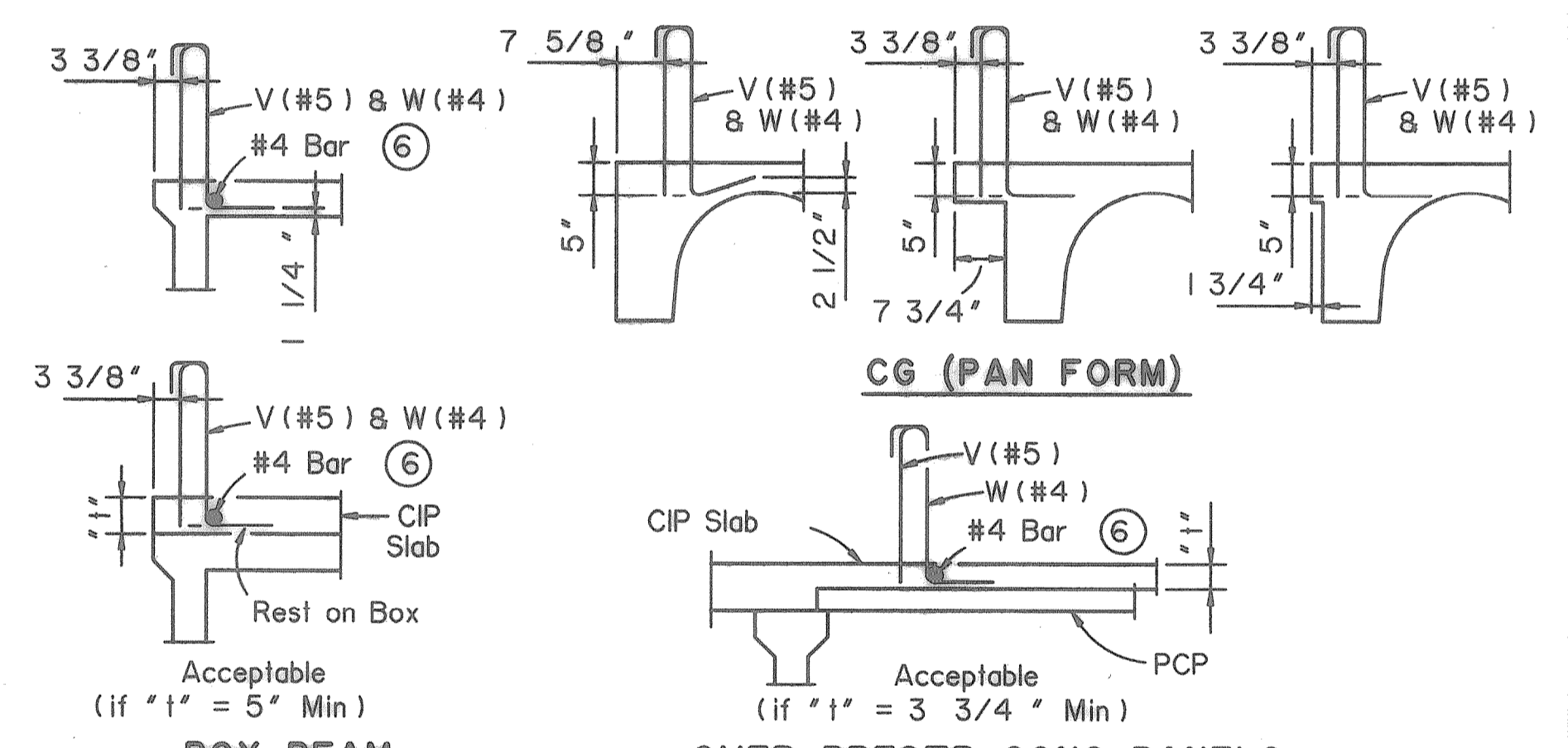
Note: Provide intermediate wall joints over all slab construction joints, over interior supports on continuous units, and at equal intervals in between as necessary to maintain a 33' maximum length of unbroken wall. Material used in forming joint may be left in place if it is compressible and light in color such as the following materials: polystyrene, molded cork granules, sponge rubber sheet, etc.

ROADWAY ELEVATION OF RAIL

① Terminal Connector shall receive the same protective coating as the attached Metal Beam Guard Fence.



AT INTERMEDIATE WALL JOINT AT SLAB EXPANSION JOINT ELEVATION SHOWING TYPICAL REINFORCING PLACEMENT

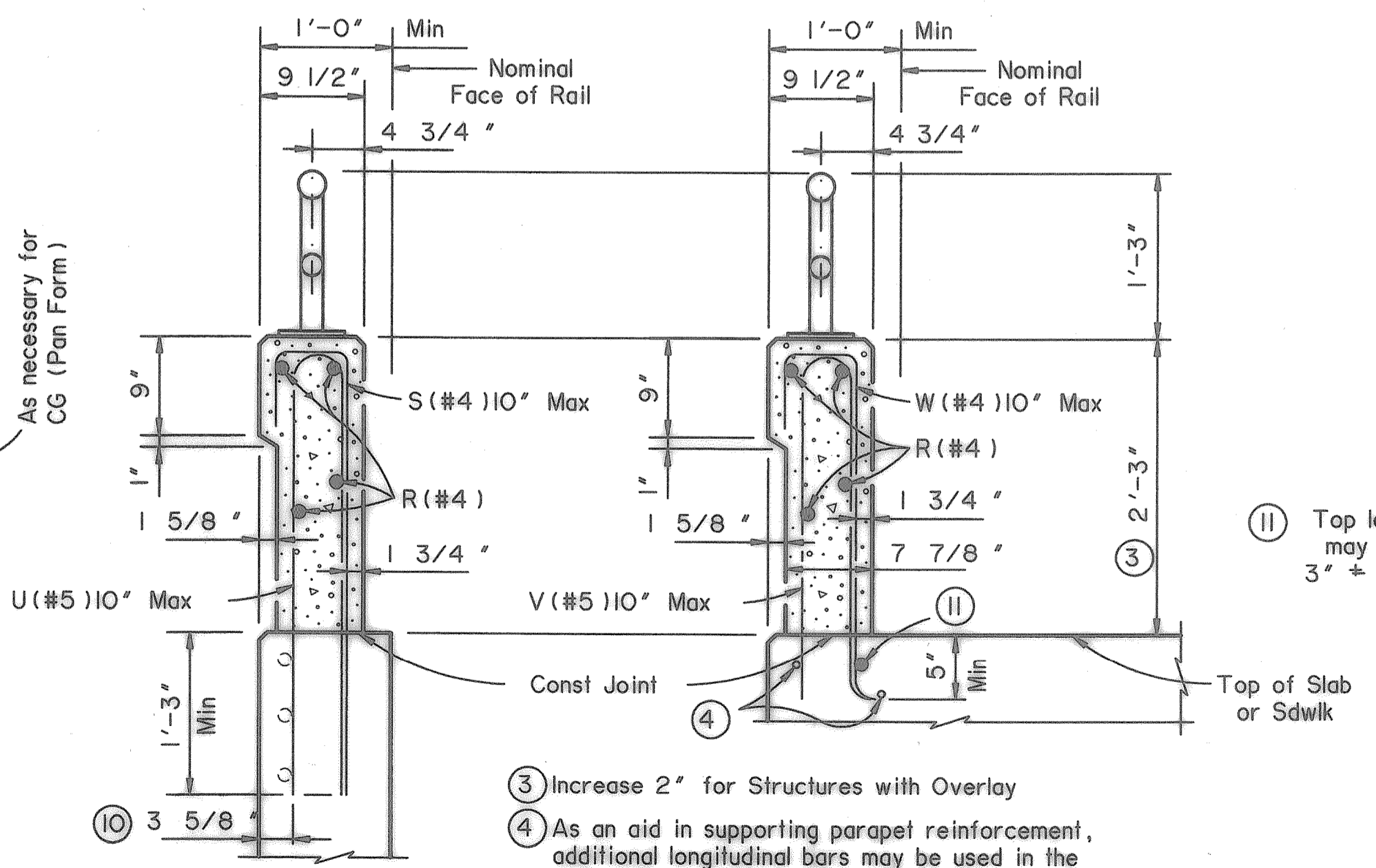


BOX BEAM

OVER PRESTR CONC PANELS

⑥ Place additional longitudinal bar (included as part of railing reinforcement) when W bars are embedded less than 5 inch.

TYPICAL REINFORCEMENT PLACEMENT DETAILS



ON ABUT WING OR CIP RETAINING WALL ON BRIDGE SLAB

SECTIONS THRU RAIL

⑪ Top longitudinal slab bar may be adjusted laterally 3 inch +/- to tie reinforcing.

③ Increase 2 inch for Structures with Overlay

④ As an aid in supporting parapet reinforcement, additional longitudinal bars may be used in the slab with the approval of the Engineer. Such bars shall be furnished at Contractor's expense.

Texas Department of Transportation Design Division (Bridge)

COMBINATION RAIL

TYPE C20I

Table with columns: FILE: R1sfd27A.dwg, DW: JJP, CK: RLR, DW: DRG, CK: LDS, STD: B582, ORG DATE: JANUARY 1996, DIST: FED REG, FEDERAL AID PROJECT: 6, SHEET: 50A, REVISIONS: COUNTY, CONTROL, SECT, JOB, HIGHWAY.

RECORD PLANS 12-17-2002