

**CAUTION !!!
UNDERGROUND UTILITIES**

EXISTING UTILITIES AND UNDERGROUND FACILITIES INDICATED ON THESE PLANS HAVE BEEN LOCATED FROM REFERENCE INFORMATION SUPPLIED BY VARIOUS OWNERS OF THE FACILITIES. THE ENGINEER DOES NOT ACCEPT THE RESPONSIBILITY FOR THE UTILITY LOCATIONS SHOWN, IT SHALL BE THE RESPONSIBILITY OF THE CONTRACTOR TO VERIFY BOTH HORIZONTALLY AND VERTICALLY THE LOCATION OF ALL EXISTING UTILITIES AND UNDERGROUND FACILITIES PRIOR TO CONSTRUCTION, TO TAKE NECESSARY PRECAUTIONS IN ORDER TO PROTECT ALL FACILITIES ENCOUNTERED, AND TO NOTIFY THE ENGINEER PROMPTLY OF ALL CONFLICTS OF THE WORK WITH EXISTING FACILITIES. THE CONTRACTOR SHALL PRESERVE AND PROTECT ALL EXISTING UTILITIES FROM DAMAGE DURING CONSTRUCTION. ANY DAMAGE BY THE CONTRACTOR TO EXISTING UTILITIES SHALL BE REPAIRED BY THE CONTRACTOR AT HIS EXPENSE.

CURVE C1523	
A	18°21'59"
D	04°52'49"
R	1174.00
T	189.79
L	376.33
E	15.24

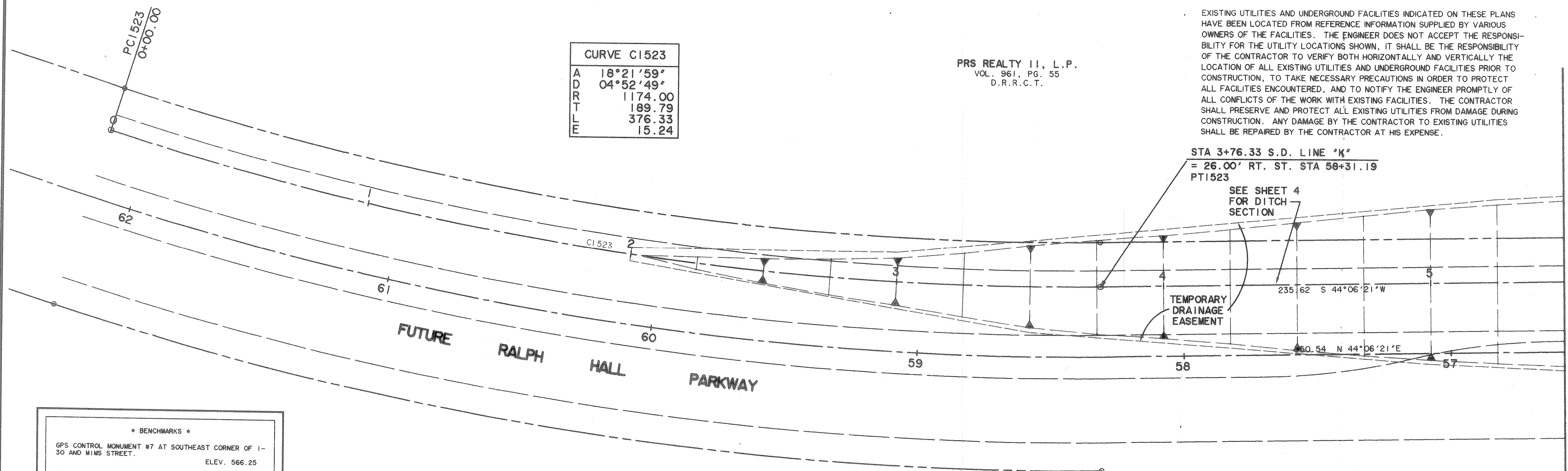
PRS REALTY II, L.P.
VOL. 961, PG. 55
D.R.R.C.T.

STA 3+76.33 S.D. LINE "K"
= 26.00' RT. ST. STA 58+31.19
PT1523

SEE SHEET 4
FOR DITCH
SECTION

TEMPORARY
DRAINAGE
EASEMENT

MATCH LINE STA 5+50



• BENCHMARKS •

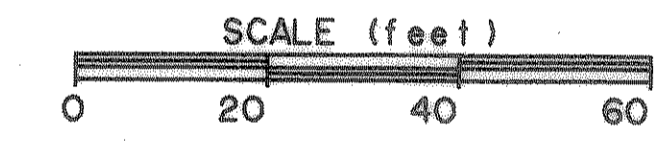
GPS CONTROL MONUMENT #7 AT SOUTHEAST CORNER OF I-30 AND MIMS STREET.	ELEV. 566.25
BOX CUT IN NW CURB RETURN AT THE INTERSECTION OF WESTWOOD AND ROCKWALL PARKWAY.	ELEV. 537.86
BOX CUT IN NW CURB RETURN AT THE INTERSECTION OF WOODCREEK AND ROCKWALL PARKWAY.	ELEV. 528.53

NOTE: REFER TO SHEET No. 4 FOR DITCH SECTION.

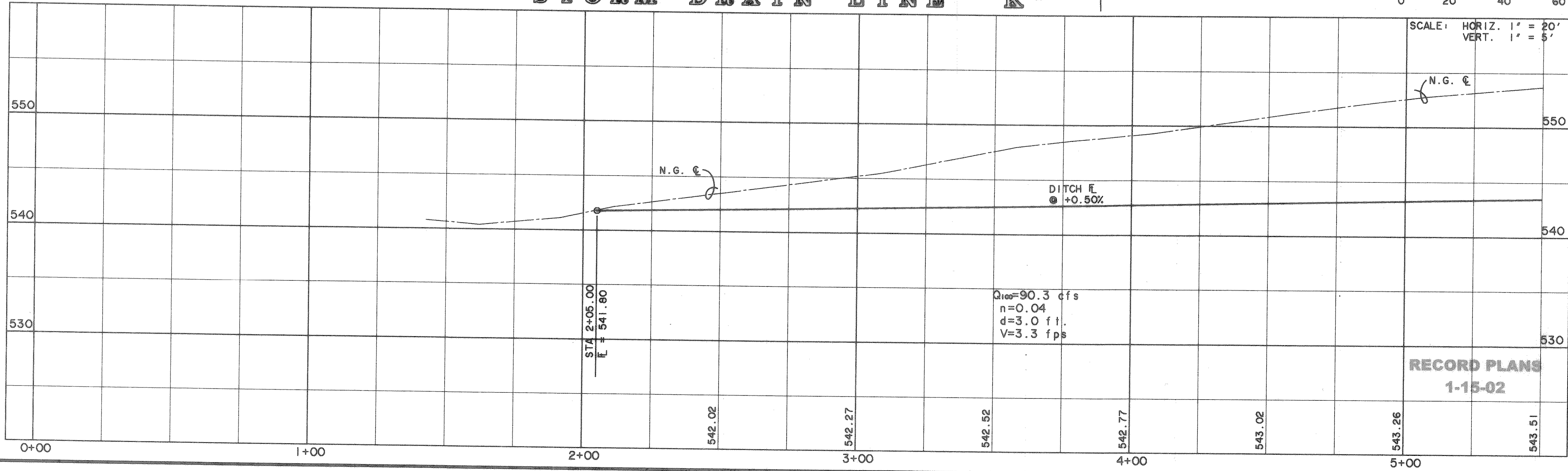
PRS REALTY II, L.P.
VOL. 961, PG. 55
D.R.R.C.T.

STATE OF TEXAS
VOL. 65, PG. 591
D.R.R.C.T.

STORM DRAIN LINE "K"

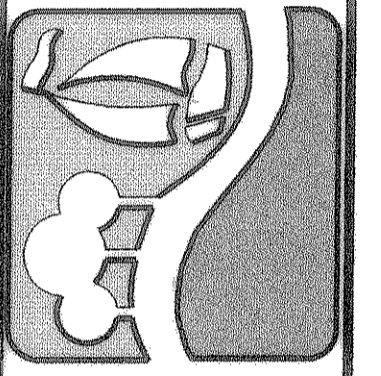


SCALE: HORIZ. 1" = 20'
VERT. 1" = 5'

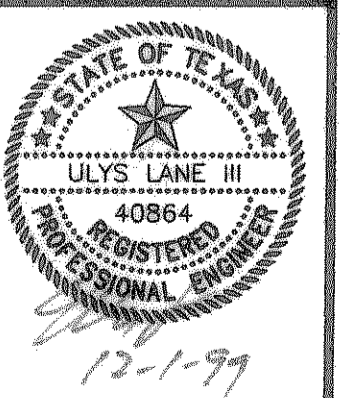


**RECORD PLANS
1-15-02**

PREPARED BY:
WIA WIER & ASSOCIATES, INC.
ENGINEERS SURVEYORS LAND PLANNERS
4300 BELTWAY PLACE SUITE 130 ARLINGTON, TEXAS 76018 METRO (817)467-7700
4108 AMON CENTER BLD. SUITE 200 FORT WORTH, TEXAS 76155 METRO (817)395-9437



**STORM DRAIN
SYSTEM "K" PLAN & PROFILE
STA 0+00 TO 5+00**



COPYRIGHT ©
WIER & ASSOCIATES, INC.
LAST SHEET EDIT
DATE 11-29-99
WAR 97057

**SHEET NO.
20**