

CAUTION!!!!
 USE EXTREME CAUTION IN TRENCHING BENEATH EXISTING 24" V.C. SEWER LINE. UNCOVER PIN AND LOCATE JOINTS AND MOVE TRENCH LATERALLY TO CENTER OF EXISTING JOINT, KEEP PROPOSED TRENCH AS NARROW AS POSSIBLE ADJACENT TO SEWER LINE. DO NOT OPEN TRENCH AT SEWER UNTIL READY TO IMMEDIATELY LAY S.D. PIPE. BACKFILL TRENCH TO CENTER OF SEWER LINE IMMEDIATELY AFTER S.D. PIPE IS LAID WITH CRUSHED STONE. TEMPORARY STRAPS (OR OTHER METHODS) MAY NEED TO BE PLACED AROUND EXISTING 24" SEWER LINE TO HOLD PIPE AND KEEP IT FROM DEFLECTING DURING CONSTRUCTION.

CAUTION!!!!
 EXERCISE EXTREME CAUTION WHEN WORKING NEAR TO EXISTING 24" V.C. SANITARY SEWER PIPE. THE CONTRACTOR SHALL NOTIFY JOE STANKIEWICZ, ENGINEERING OFFICER, AT 972-442-5405 48 HOURS PRIOR TO PERFORMING WORK IN THE VICINITY OF THE NTMWD SANITARY SEWER.

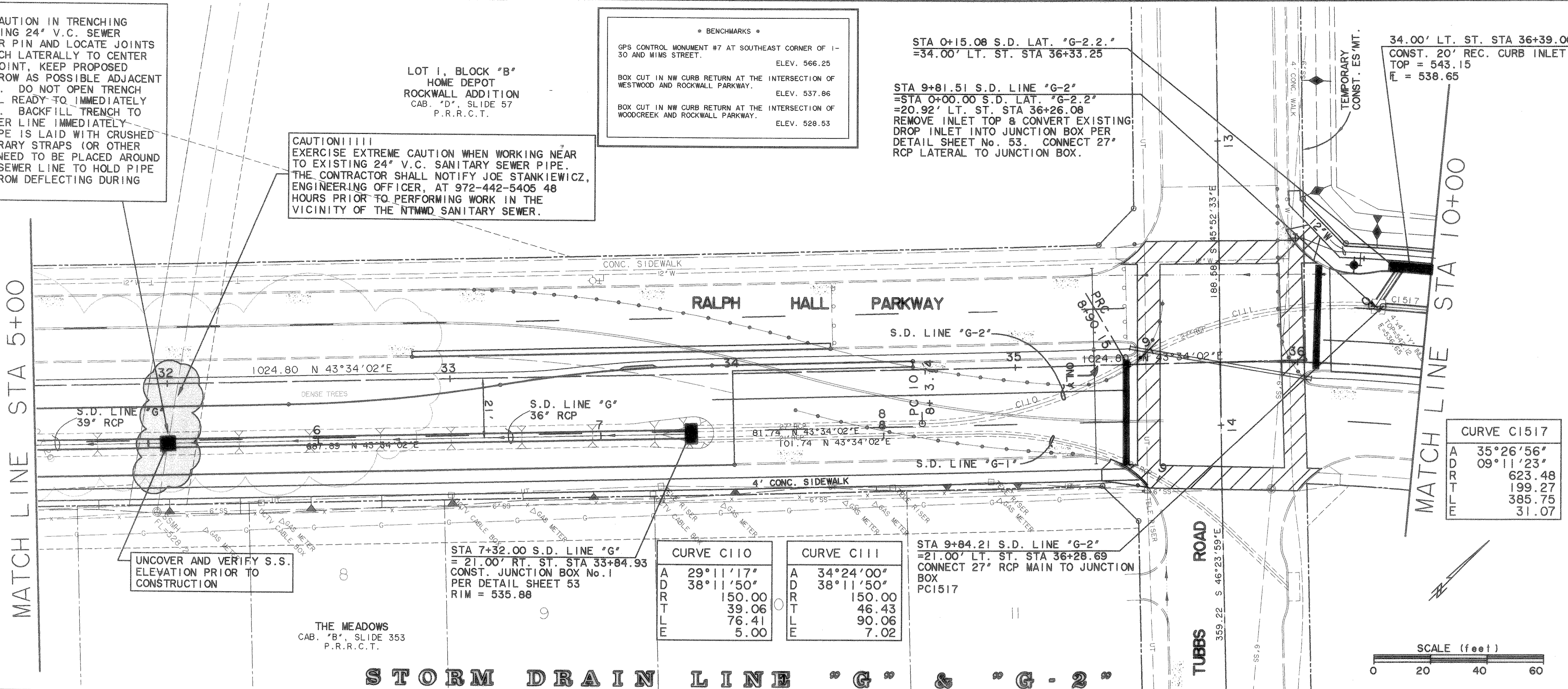
* BENCHMARKS *

GPS CONTROL MONUMENT #7 AT SOUTHEAST CORNER OF 1-30 AND WIMS STREET.	ELEV. 566.25
BOX CUT IN NW CURB RETURN AT THE INTERSECTION OF WESTWOOD AND ROCKWALL PARKWAY.	ELEV. 537.86
BOX CUT IN NW CURB RETURN AT THE INTERSECTION OF WOODCREEK AND ROCKWALL PARKWAY.	ELEV. 528.53

STA 0+15.08 S.D. LAT. "G-2"
 =34.00' LT. ST. STA 36+33.25

STA 9+81.51 S.D. LINE "G-2"
 =STA 0+00.00 S.D. LAT. "G-2.2"
 =20.92' LT. ST. STA 36+26.08
 REMOVE INLET TOP & CONVERT EXISTING DROP INLET INTO JUNCTION BOX PER DETAIL SHEET No. 53. CONNECT 27" RCP LATERAL TO JUNCTION BOX.

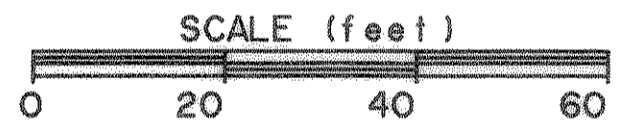
34.00' LT. ST. STA 36+39.00
 CONST. 20" REC. CURB INLET
 TOP = 543.15
 F = 538.65



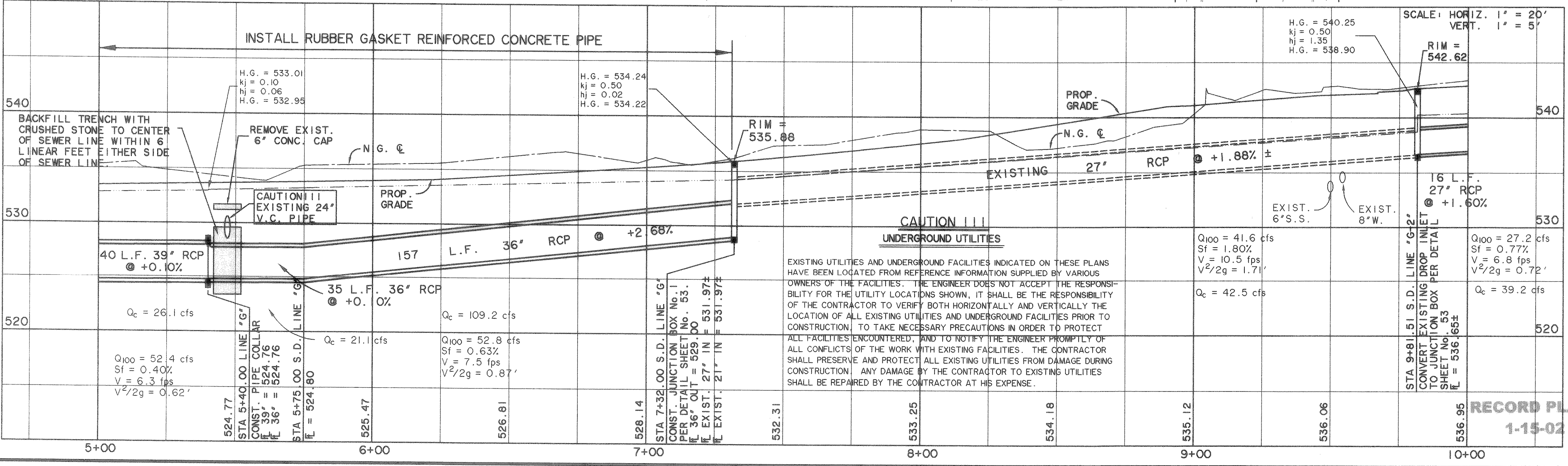
CURVE C1517

A	35°26'56"
D	09°11'23"
R	623.48
T	199.27
L	385.75
E	31.07

CURVE C110		CURVE C111	
A	29°11'17"	A	34°24'00"
D	38°11'50"	D	38°11'50"
R	150.00	R	150.00
T	39.06	T	46.43
L	76.41	L	90.06
E	5.00	E	7.02



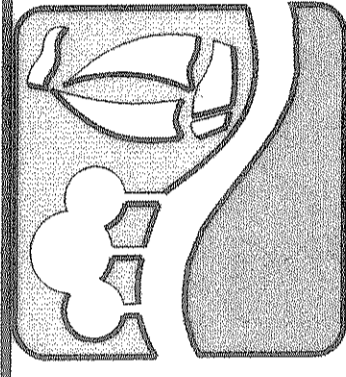
STORM DRAIN LINE "G" & "G-2"



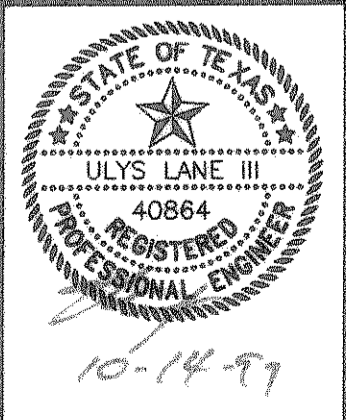
CAUTION!!!
 UNDERGROUND UTILITIES

EXISTING UTILITIES AND UNDERGROUND FACILITIES INDICATED ON THESE PLANS HAVE BEEN LOCATED FROM REFERENCE INFORMATION SUPPLIED BY VARIOUS OWNERS OF THE FACILITIES. THE ENGINEER DOES NOT ACCEPT THE RESPONSIBILITY FOR THE UTILITY LOCATIONS SHOWN, IT SHALL BE THE RESPONSIBILITY OF THE CONTRACTOR TO VERIFY BOTH HORIZONTALLY AND VERTICALLY THE LOCATION OF ALL EXISTING UTILITIES AND UNDERGROUND FACILITIES PRIOR TO CONSTRUCTION. TO TAKE NECESSARY PRECAUTIONS IN ORDER TO PROTECT ALL FACILITIES ENCOUNTERED, AND TO NOTIFY THE ENGINEER PROMPTLY OF ALL CONFLICTS OF THE WORK WITH EXISTING FACILITIES. THE CONTRACTOR SHALL PRESERVE AND PROTECT ALL EXISTING UTILITIES FROM DAMAGE DURING CONSTRUCTION. ANY DAMAGE BY THE CONTRACTOR TO EXISTING UTILITIES SHALL BE REPAIRED BY THE CONTRACTOR AT HIS EXPENSE.

PREPARED BY:
VIA WIER & ASSOCIATES, INC.
 ENGINEERS SURVEYORS LAND PLANNERS
 4300 BELWAY PLACE SUITE 130 ARLINGTON, TEXAS 76010 METRO (817)467-7700
 4108 AMON CENTER BLDG. SUITE 200 FORT WORTH, TEXAS 76105 METRO (817)355-9457



STORM DRAIN
 SYSTEM "G" PLAN & PROFILE
 STA 5+00 TO 10+00



COPYRIGHT ©
 WIER & ASSOCIATES, INC.
 LAST SHEET EDIT
 DATE 06-14-99
 WA# 97057
 SHEET NO.
 27

TIME: 9:52 FILE: SDPPI1.dwg

RECORD PLANS
 1-15-02