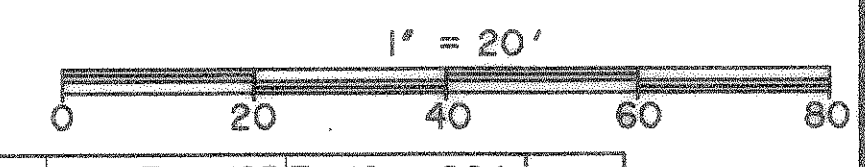
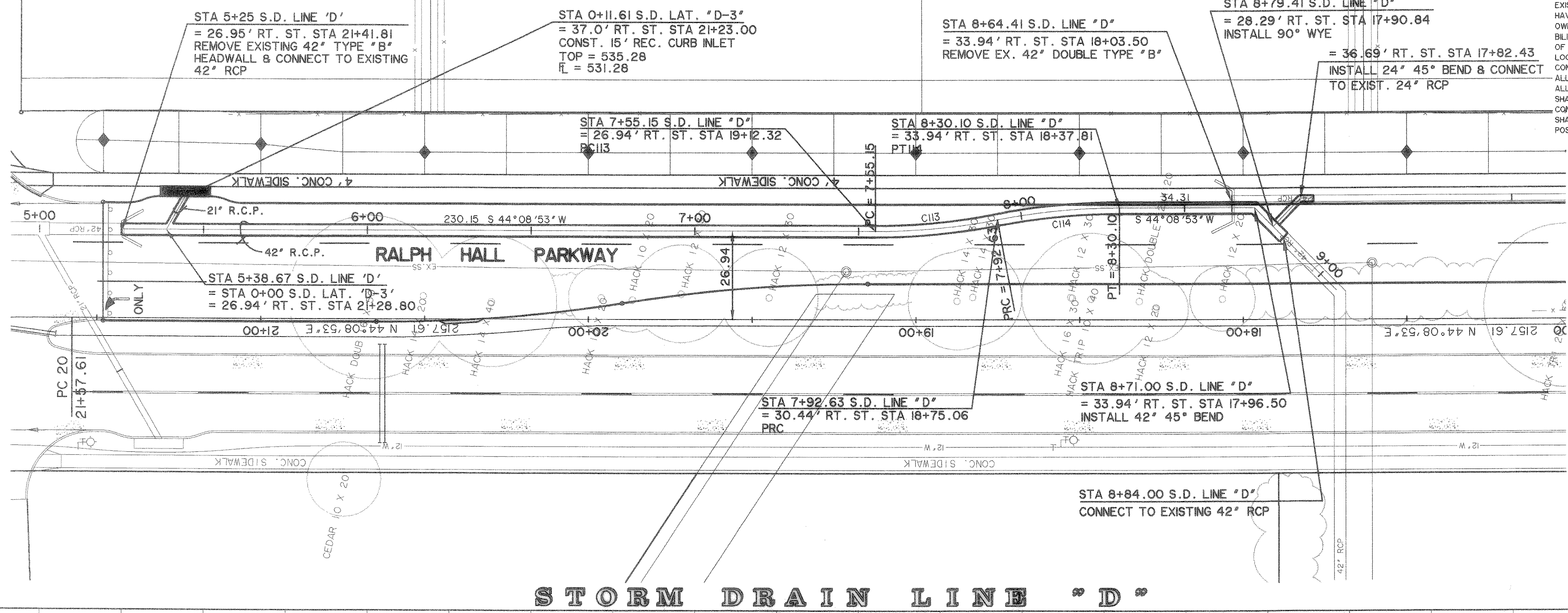


**CAUTION !!!**  
UNDERGROUND UTILITIES

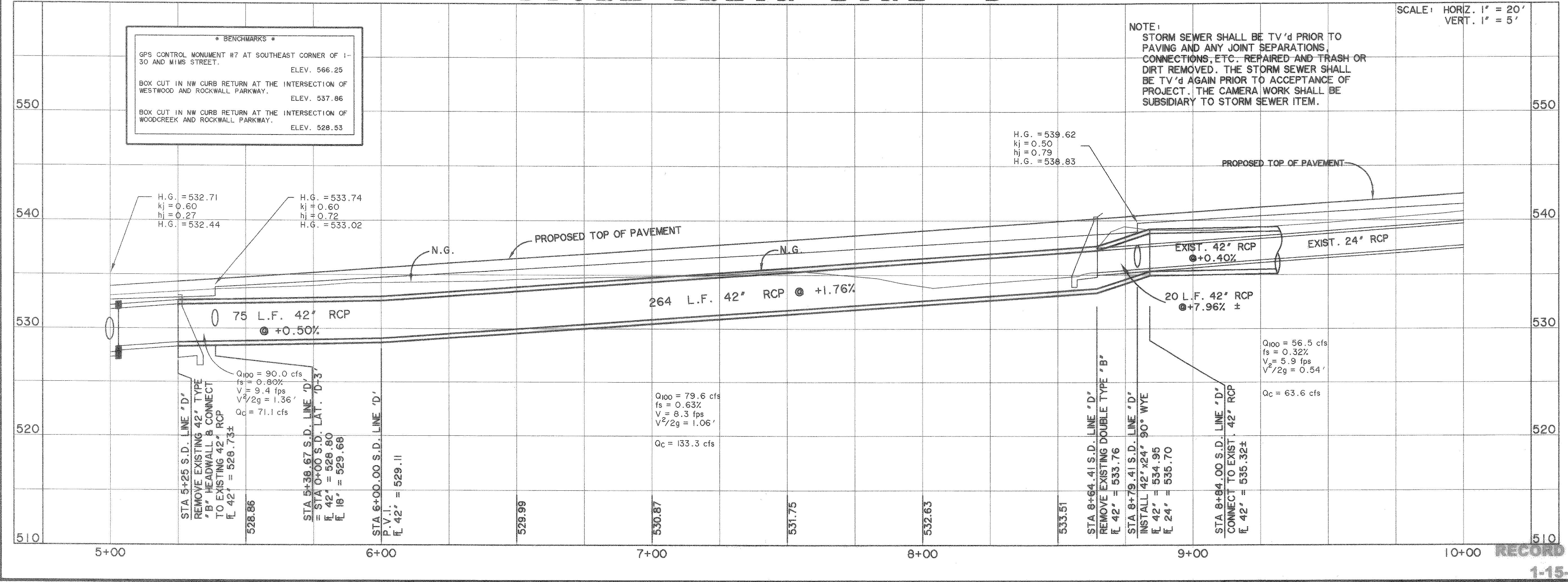
EXISTING UTILITIES AND UNDERGROUND FACILITIES INDICATED ON THESE PLANS HAVE BEEN LOCATED FROM REFERENCE INFORMATION SUPPLIED BY VARIOUS OWNERS OF THE FACILITIES. THE ENGINEER DOES NOT ACCEPT THE RESPONSIBILITY FOR THE UTILITY LOCATIONS SHOWN, IT SHALL BE THE RESPONSIBILITY OF THE CONTRACTOR TO VERIFY BOTH HORIZONTALLY AND VERTICALLY THE LOCATION OF ALL EXISTING UTILITIES AND UNDERGROUND FACILITIES PRIOR TO CONSTRUCTION, TO TAKE NECESSARY PRECAUTIONS IN ORDER TO PROTECT ALL FACILITIES ENCOUNTERED, AND TO NOTIFY THE ENGINEER PROMPTLY OF ALL CONFLICTS OF THE WORK WITH EXISTING FACILITIES. THE CONTRACTOR SHALL PRESERVE AND PROTECT ALL EXISTING UTILITIES FROM DAMAGE DURING CONSTRUCTION. ANY DAMAGE BY THE CONTRACTOR TO EXISTING UTILITIES SHALL BE REPAIRED BY THE CONTRACTOR AT HIS EXPENSE. CONTACT ALL POSSIBLE UTILITY AND UNDERGROUND FACILITY OWNERS.



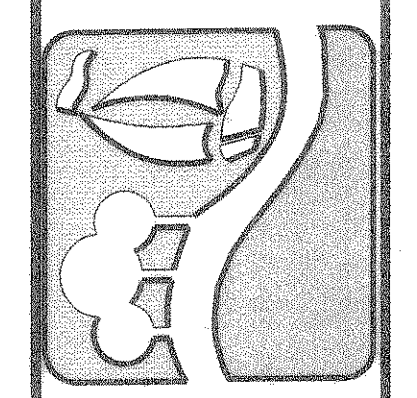
**\* BENCHMARKS \***

GPS CONTROL MONUMENT #7 AT SOUTHEAST CORNER OF 1-30 AND MIMS STREET.	ELEV. 566.25
BOX CUT IN NW CURB RETURN AT THE INTERSECTION OF WESTWOOD AND ROCKWALL PARKWAY.	ELEV. 537.86
BOX CUT IN NW CURB RETURN AT THE INTERSECTION OF WOODCREEK AND ROCKWALL PARKWAY.	ELEV. 528.53

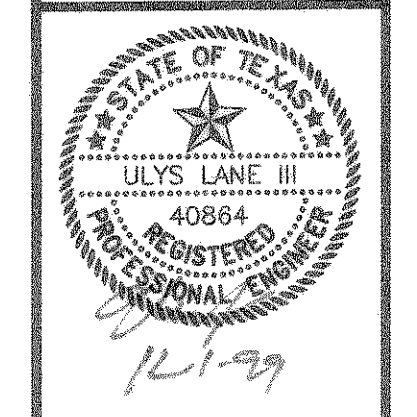
**NOTE:**  
STORM SEWER SHALL BE TV'D PRIOR TO PAVING AND ANY JOINT SEPARATIONS, CONNECTIONS, ETC. REPAIRED AND TRASH OR DIRT REMOVED. THE STORM SEWER SHALL BE TV'D AGAIN PRIOR TO ACCEPTANCE OF PROJECT. THE CAMERA WORK SHALL BE SUBSIDIARY TO STORM SEWER ITEM.



PREPARED BY:  
**VIA WIER & ASSOCIATES, INC.**  
ENGINEERS SURVEYORS LAND PLANNERS  
4300 BELTWAY PLACE, SUITE 130 ARLINGTON, TEXAS 76018 METRO (817)467-7700  
4108 ANVIN CENTER BLDG. SUITE 200 FORT WORTH, TEXAS 76155-9437



**STORM DRAIN**  
**LINE "D" PLAN & PROFILE**  
STA 5+25 TO 8+65



COPYRIGHT ©  
WIER & ASSOCIATES, INC.  
LAST SHEET EDIT  
DATE 11-29-99  
WA# 97057

**RECORD PLANS SHEET NO. 25**

1-15-02