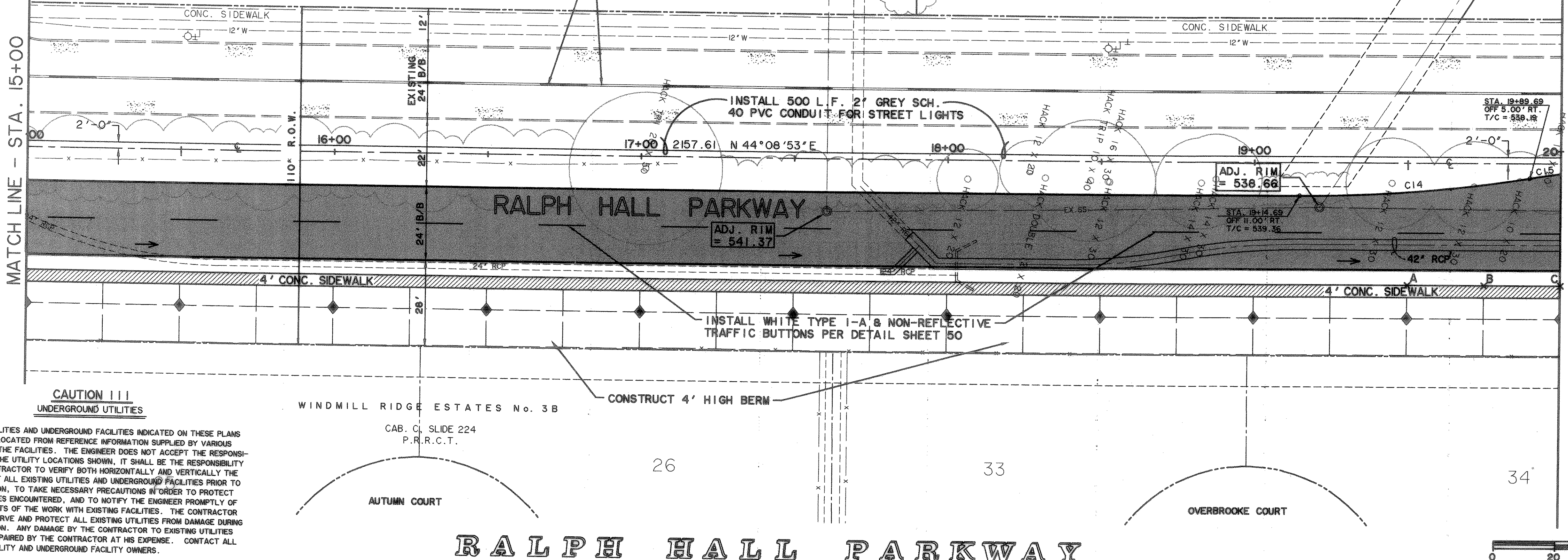


SIDEWALK ELEVATIONS		
POINT	STATION	ELEVATION
A	19+50	538.35
B	19+75	538.30
C	20+00	537.95

740/3099 LIMITED PARTNERSHIP
VOL. 620, PG. 69
D.R.R.C.T.

BENCHMARKS
GPS CONTROL MONUMENT #7 AT SOUTHEAST CORNER OF 1-30 AND WIMS STREET. ELEV. 566.25
BOX CUT IN NW CURB RETURN AT THE INTERSECTION OF WESTWOOD AND ROCKWALL PARKWAY. ELEV. 537.86
BOX CUT IN NW CURB RETURN AT THE INTERSECTION OF WOODCREEK AND ROCKWALL PARKWAY. ELEV. 528.53

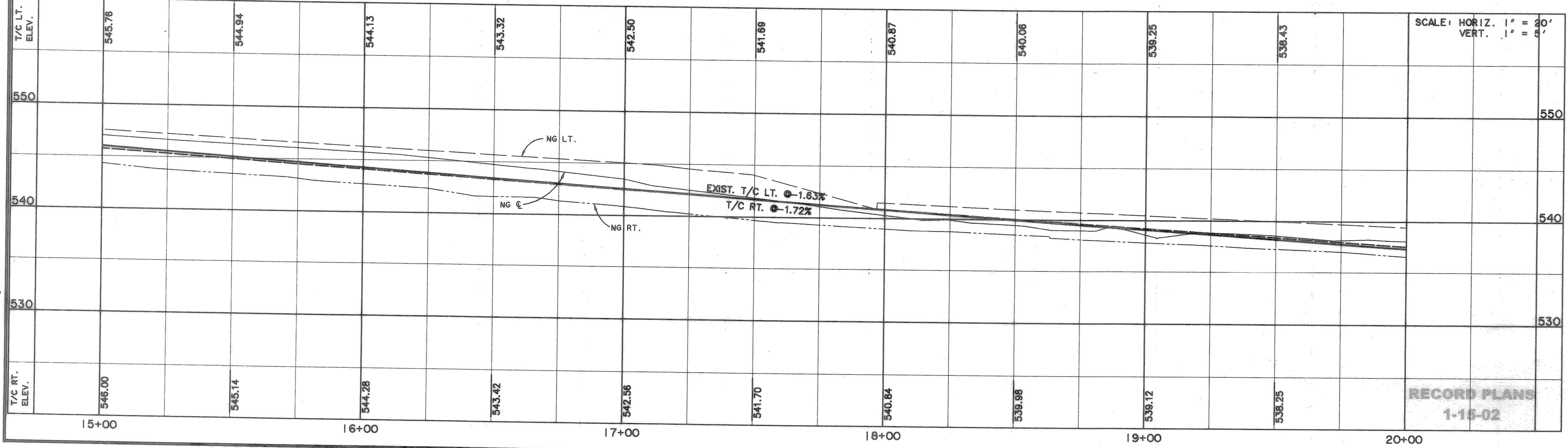
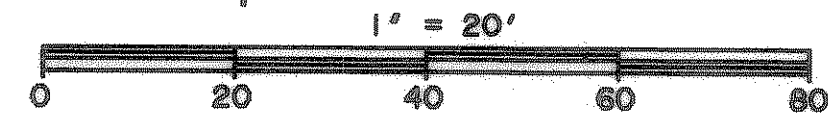
* CURVE TABLE *						
CURVE	RADIUS	LENGTH	TANGENT	CHORD	BEARING	DELTA
C14	471.75'	75.32'	37.74'	75.24'	N39°34'27"E	09°08'52"
C15	471.75'	75.32'	37.74'	75.24'	N39°34'27"E	09°08'52"



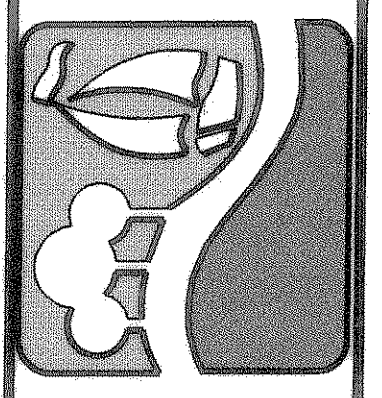
CAUTION !!!
UNDERGROUND UTILITIES

EXISTING UTILITIES AND UNDERGROUND FACILITIES INDICATED ON THESE PLANS HAVE BEEN LOCATED FROM REFERENCE INFORMATION SUPPLIED BY VARIOUS OWNERS OF THE FACILITIES. THE ENGINEER DOES NOT ACCEPT THE RESPONSIBILITY FOR THE UTILITY LOCATIONS SHOWN. IT SHALL BE THE RESPONSIBILITY OF THE CONTRACTOR TO VERIFY BOTH HORIZONTALLY AND VERTICALLY THE LOCATION OF ALL EXISTING UTILITIES AND UNDERGROUND FACILITIES PRIOR TO CONSTRUCTION, TO TAKE NECESSARY PRECAUTIONS IN ORDER TO PROTECT ALL FACILITIES ENCOUNTERED, AND TO NOTIFY THE ENGINEER PROMPTLY OF ALL CONFLICTS OF THE WORK WITH EXISTING FACILITIES. THE CONTRACTOR SHALL PRESERVE AND PROTECT ALL EXISTING UTILITIES FROM DAMAGE DURING CONSTRUCTION. ANY DAMAGE BY THE CONTRACTOR TO EXISTING UTILITIES SHALL BE REPAIRED BY THE CONTRACTOR AT HIS EXPENSE. CONTACT ALL POSSIBLE UTILITY AND UNDERGROUND FACILITY OWNERS.

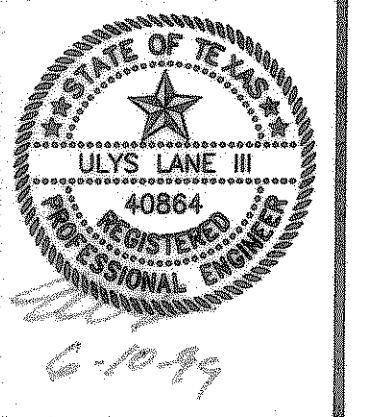
RALPH HALL PARKWAY



PREPARED BY:
VIA WIER & ASSOCIATES, INC.
ENGINEERS SURVEYORS LAND PLANNERS
4300 BELLEVUE PLACE, SUITE 130 ARLINGTON, TEXAS 76016 METRO (817)467-7700
4108 AMON CENTER BLDG. SUITE 200 FORT WORTH, TEXAS 76105 METRO (817)355-9437



RALPH HALL PARKWAY
PAVING PLAN & PROFILE
STA 15+00 TO 20+00



COPYRIGHT ©
WIER & ASSOCIATES, INC.
LAST SHEET EDIT
DATE 05-26-99
WAW 97057
SHEET NO.
9

TIME: 15:15 FILE: PAVE14.dwg

RECORD PLANS
1-15-02