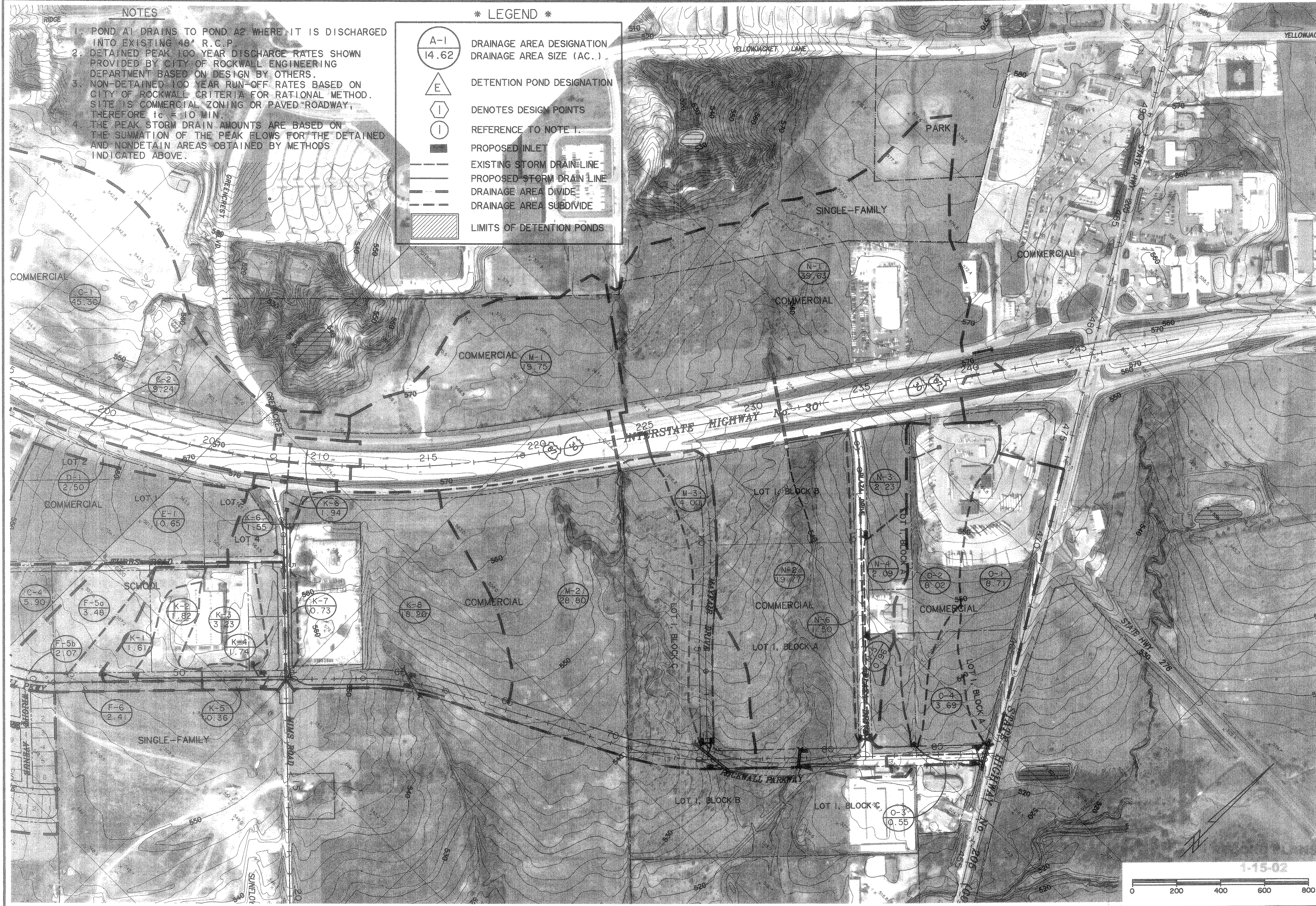


NOTES

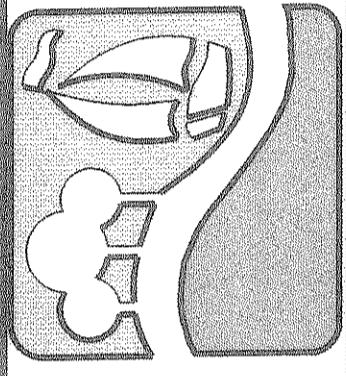
1. POND A1 DRAINS TO POND A2 WHERE IT IS DISCHARGED INTO EXISTING 48" R.C.P.
2. DETAINED PEAK 100 YEAR DISCHARGE RATES SHOWN PROVIDED BY CITY OF ROCKWALL ENGINEERING DEPARTMENT BASED ON DESIGN BY OTHERS.
3. NON-DETAINED 100 YEAR RUN-OFF RATES BASED ON CITY OF ROCKWALL CRITERIA FOR RATIONAL METHOD. SITE IS COMMERCIAL ZONING OR PAVED ROADWAY, THEREFORE  $t_c = 10$  MIN.
4. THE PEAK STORM DRAIN AMOUNTS ARE BASED ON THE SUMMATION OF THE PEAK FLOWS FOR THE DETAINED AND NONDETAIN AREAS OBTAINED BY METHODS INDICATED ABOVE.

\* LEGEND \*

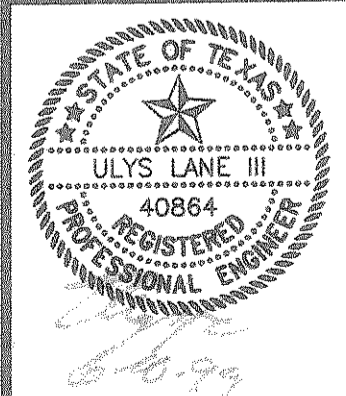
- A-1 DRAINAGE AREA DESIGNATION
- 14.62 DRAINAGE AREA SIZE (AC.)
- E DETENTION POND DESIGNATION
- I DENOTES DESIGN POINTS
- I REFERENCE TO NOTE 1.
- PROPOSED INLET
- EXISTING STORM DRAIN LINE
- PROPOSED STORM DRAIN LINE
- DRAINAGE AREA DIVIDE
- DRAINAGE AREA SUBDIVIDE
- LIMITS OF DETENTION PONDS



PREPARED BY:  
**VIA WIER & ASSOCIATES, INC.**  
 ENGINEERS SURVEYORS LAND PLANNERS  
 4300 BELTWAY PLACE SUITE 130 ARLINGTON, TEXAS 76018 METRO (817) 467-7700  
 4106 AUSTIN CENTER BLVD. SUITE 200 FORT WORTH, TEXAS 76155 METRO (817) 355-9457



**DRAINAGE AREA  
 MAP NORTHEAST**



COPYRIGHT ©  
 WIER & ASSOCIATES, INC.  
 LAST SHEET EDIT  
 DATE 08-27-99  
 WA# 97057

**SHEET NO.  
 21**

TIME 10:10 FILE: damp1ib.dwg