

*** BENCHMARKS ***

GPS CONTROL MONUMENT #7 AT SOUTHEAST CORNER OF I-30 AND MIHS STREET. ELEV. 566.25

BOX CUT IN NW CURB RETURN AT THE INTERSECTION OF WESTWOOD AND ROCKWALL PARKWAY. ELEV. 537.86

BOX CUT IN NW CURB RETURN AT THE INTERSECTION OF WOODCREEK AND ROCKWALL PARKWAY. ELEV. 528.53

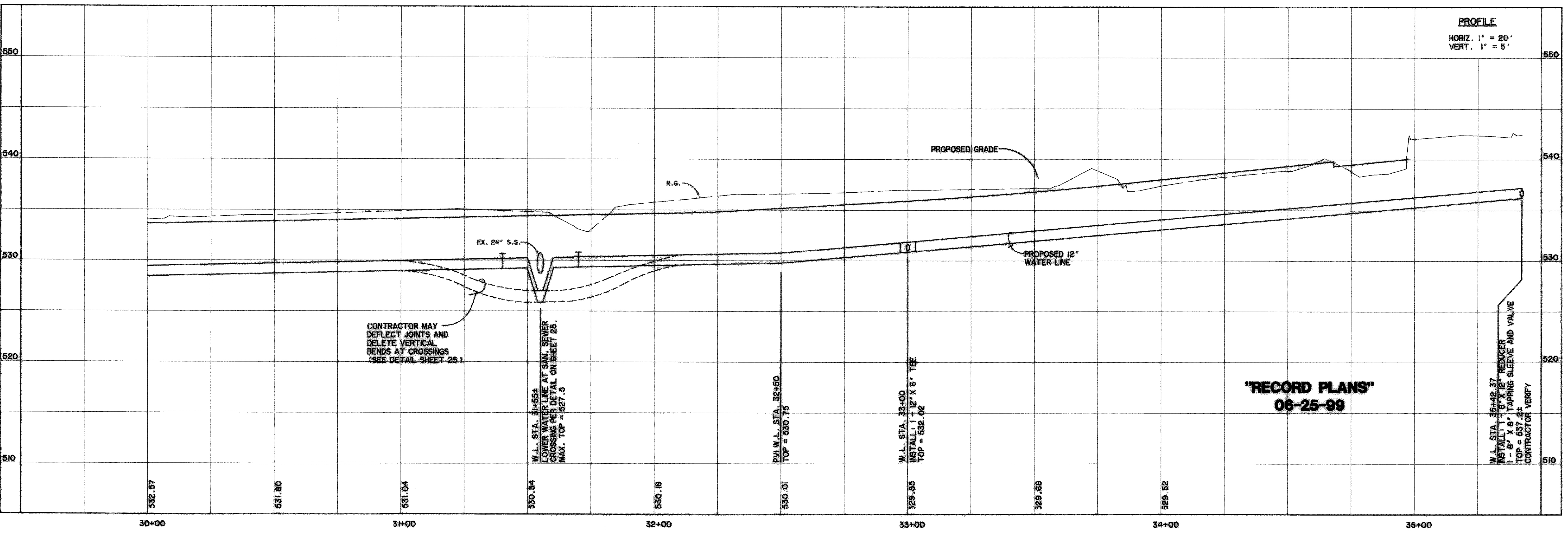
CAUTION !!! EXERCISE EXTREME CAUTION WHERE WORKING NEAR THE EXISTING 24" V.C. SANITARY SEWER PIPE. THE CONTRACTOR SHALL NOTIFY JOE STANKIEWICZ, ENGINEERING OFFICER AT 972-442-5405, 48 HOURS PRIOR TO PERFORMING WORK IN THE VICINITY OF THE N.T.M.W.D. SANITARY SEWER.

CAUTION !!! UNDERGROUND UTILITIES

EXISTING UTILITIES AND UNDERGROUND FACILITIES INDICATED ON THESE PLANS HAVE BEEN LOCATED FROM REFERENCE INFORMATION SUPPLIED BY VARIOUS OWNERS OF THE FACILITIES. THE ENGINEER DOES NOT ACCEPT THE RESPONSIBILITY FOR THE UTILITY LOCATIONS SHOWN. IT SHALL BE THE RESPONSIBILITY OF THE CONTRACTOR TO VERIFY BOTH HORIZONTALLY AND VERTICALLY THE LOCATION OF ALL EXISTING UTILITIES AND UNDERGROUND FACILITIES PRIOR TO CONSTRUCTION. TO TAKE NECESSARY PRECAUTIONS IN ORDER TO PROTECT ALL FACILITIES ENCOUNTERED, AND TO NOTIFY THE ENGINEER PROMPTLY OF ALL CONFLICTS OF THE WORK WITH EXISTING FACILITIES. THE CONTRACTOR SHALL PRESERVE AND PROTECT ALL EXISTING UTILITIES FROM DAMAGE DURING CONSTRUCTION. ANY DAMAGE BY THE CONTRACTOR TO EXISTING UTILITIES SHALL BE REPAIRED BY THE CONTRACTOR AT HIS EXPENSE. CONTACT ALL POSSIBLE UTILITY AND UNDERGROUND FACILITY OWNERS.

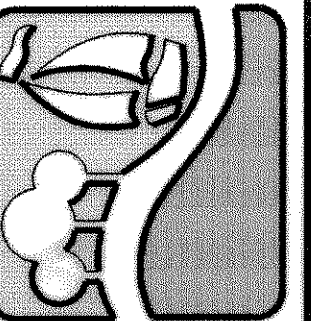
NOTE: USE FLANGED 6" FITTINGS ON FIRE HYDRANT TEES & BENDS.

12" WATER LINE



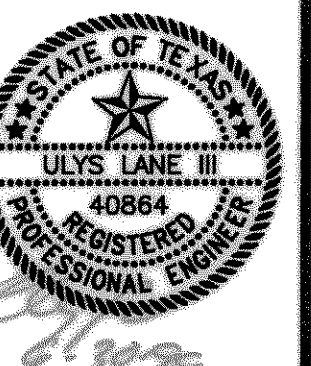
"RECORD PLANS" 06-25-99

PREPARED BY:
VIA WIER & ASSOCIATES, INC.
 ENGINEERS SURVEYORS LAND PLANNERS
 4300 BELWAY PLACE SUITE 130 ARLINGTON, TEXAS 76018 METRO (817)467-7700
 4108 AMAN CARTER BLD. SUITE 200 FORT WORTH, TEXAS 76155 METRO (817)355-4437



**RALPH HALL PARKWAY
 CITY OF ROCKWALL
 ROCKWALL COUNTY, TEXAS**

**12" WATER LINE
 PLAN & PROFILE
 STA 30+00 TO END**



COPYRIGHT ©
 WIER & ASSOCIATES, INC.
 LAST SHEET EDIT
 DATED 06-29-99
 WA# 97057

SHEET NO. 31

TIME: 20.16 FILE: WATER7