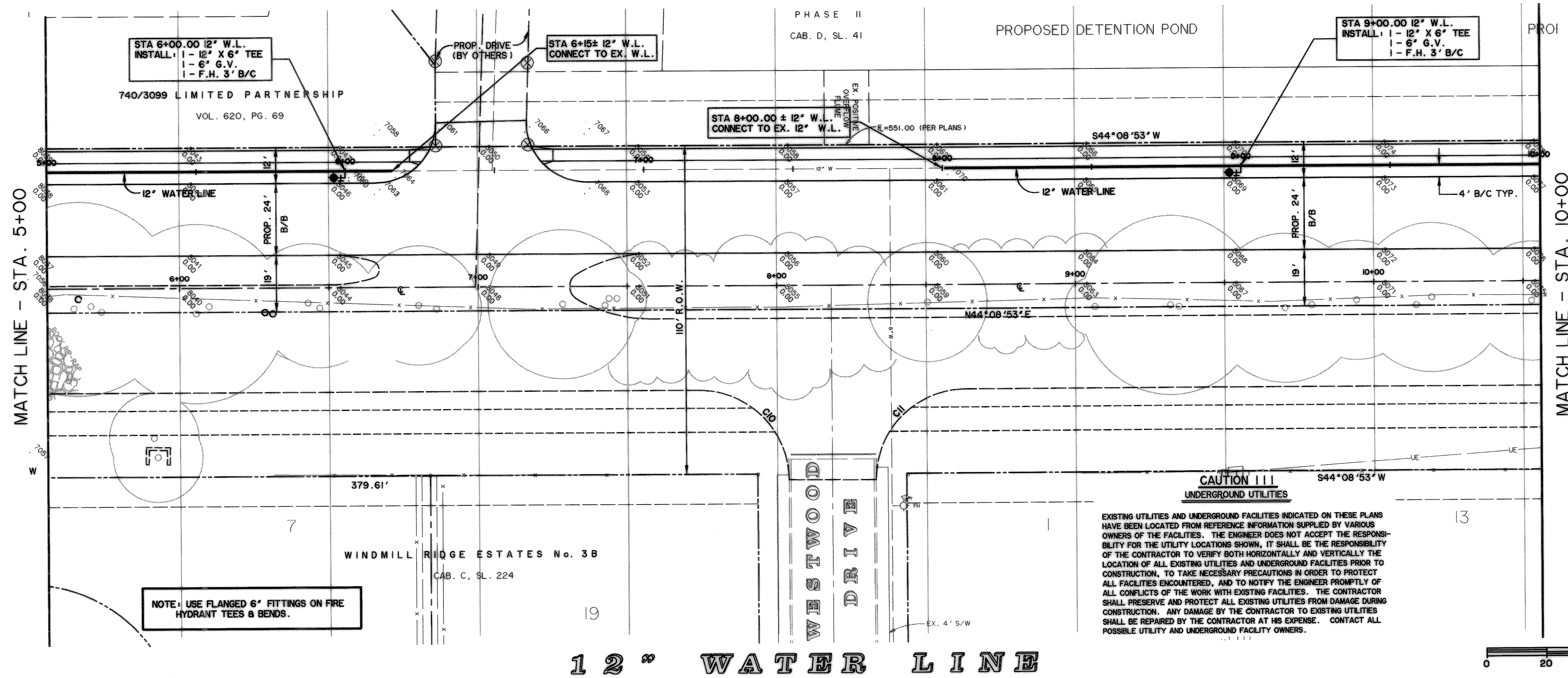


TIME 10:19 FILE: C:\97057\WATER2



STA 6+00.00 12" W.L.
INSTALL: 1 - 12" X 6" TEE
1 - 6" G.V.
1 - F.H. 3" B/C

STA 6+15± 12" W.L.
CONNECT TO EX. W.L.

STA 8+00.00 ± 12" W.L.
CONNECT TO EX. 12" W.L.

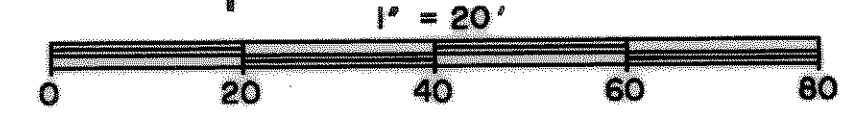
STA 9+00.00 12" W.L.
INSTALL: 1 - 12" X 6" TEE
1 - 6" G.V.
1 - F.H. 3" B/C

NOTE: USE FLANGED 6" FITTINGS ON FIRE HYDRANT TEES & BENDS.

CAUTION !!!
UNDERGROUND UTILITIES

EXISTING UTILITIES AND UNDERGROUND FACILITIES INDICATED ON THESE PLANS HAVE BEEN LOCATED FROM REFERENCE INFORMATION SUPPLIED BY VARIOUS OWNERS OF THE FACILITIES. THE ENGINEER DOES NOT ACCEPT THE RESPONSIBILITY FOR THE UTILITY LOCATIONS SHOWN. IT SHALL BE THE RESPONSIBILITY OF THE CONTRACTOR TO VERIFY BOTH HORIZONTALLY AND VERTICALLY THE LOCATION OF ALL EXISTING UTILITIES AND UNDERGROUND FACILITIES PRIOR TO CONSTRUCTION. TO TAKE NECESSARY PRECAUTIONS IN ORDER TO PROTECT ALL FACILITIES ENCOUNTERED, AND TO NOTIFY THE ENGINEER PROMPTLY OF ALL CONFLICTS OF THE WORK WITH EXISTING FACILITIES. THE CONTRACTOR SHALL PRESERVE AND PROTECT ALL EXISTING UTILITIES FROM DAMAGE DURING CONSTRUCTION. ANY DAMAGE BY THE CONTRACTOR TO EXISTING UTILITIES SHALL BE REPAIRED BY THE CONTRACTOR AT HIS EXPENSE. CONTACT ALL POSSIBLE UTILITY AND UNDERGROUND FACILITY OWNERS.

12" WATER LINE

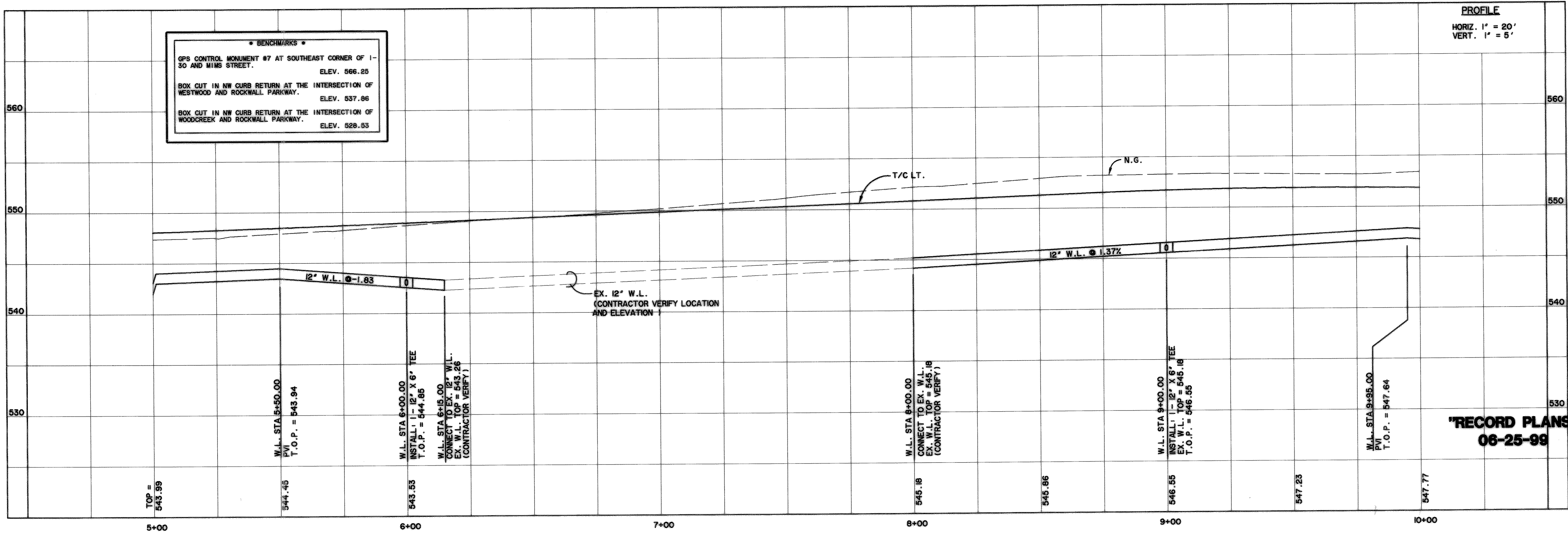


*** BENCHMARKS ***

GPS CONTROL MONUMENT #7 AT SOUTHEAST CORNER OF 1-30 AND WIMS STREET. ELEV. 566.25

BOX CUT IN NW CURB RETURN AT THE INTERSECTION OF WESTWOOD AND ROCKWALL PARKWAY. ELEV. 537.86

BOX CUT IN NW CURB RETURN AT THE INTERSECTION OF WOODCREEK AND ROCKWALL PARKWAY. ELEV. 528.53



TOP = 543.39

W.L. STA 5+50.00
P.V.I. = 543.94
T.O.P. = 543.94

W.L. STA 6+00.00
INSTALL: 1 - 12" X 6" TEE
T.O.P. = 544.86

W.L. STA 6+15.00
CONNECT TO EX. 12" W.L.
EX. W.L. FOR VERIFY (CONTRACTOR VERIFY)

EX. 12" W.L.
(CONTRACTOR VERIFY LOCATION AND ELEVATION)

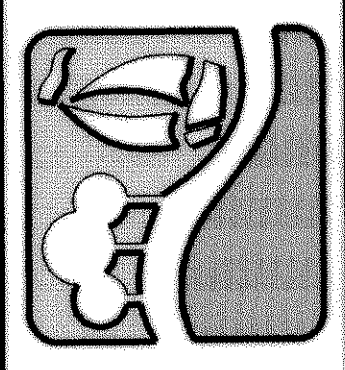
W.L. STA 8+00.00
CONNECT TO EX. W.L.
EX. W.L. TOP = 545.18
(CONTRACTOR VERIFY)

W.L. STA 9+00.00
INSTALL: 1 - 12" X 6" TEE
EX. W.L. TOP = 545.18
T.O.P. = 546.55

W.L. STA 9+95.00
P.V.I. = 547.64
T.O.P. = 547.64

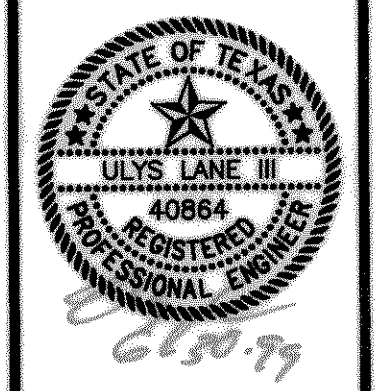
"RECORD PLANS"
06-25-99

PREPARED BY:
VIA WIER & ASSOCIATES, INC.
ENGINEERS SURVEYORS LAND PLANNERS
4300 BELLEVUE PLACE SUITE 130 ARLINGTON, TEXAS 76018 METRO (817)467-7700
4108 AMON CARTER BLVD. SUITE 200 FORT WORTH, TEXAS 76155 METRO (817)355-4437



RALPH HALL PARKWAY
CITY OF ROCKWALL
ROCKWALL COUNTY, TEXAS

12" WATER LINE
PLAN & PROFILE
STA 5+00 TO STA 10+00



COPYRIGHT ©
WIER & ASSOCIATES, INC.
LAST SHEET EDIT
DATED 06-29-99
WA# 97057
SHEET NO. 26