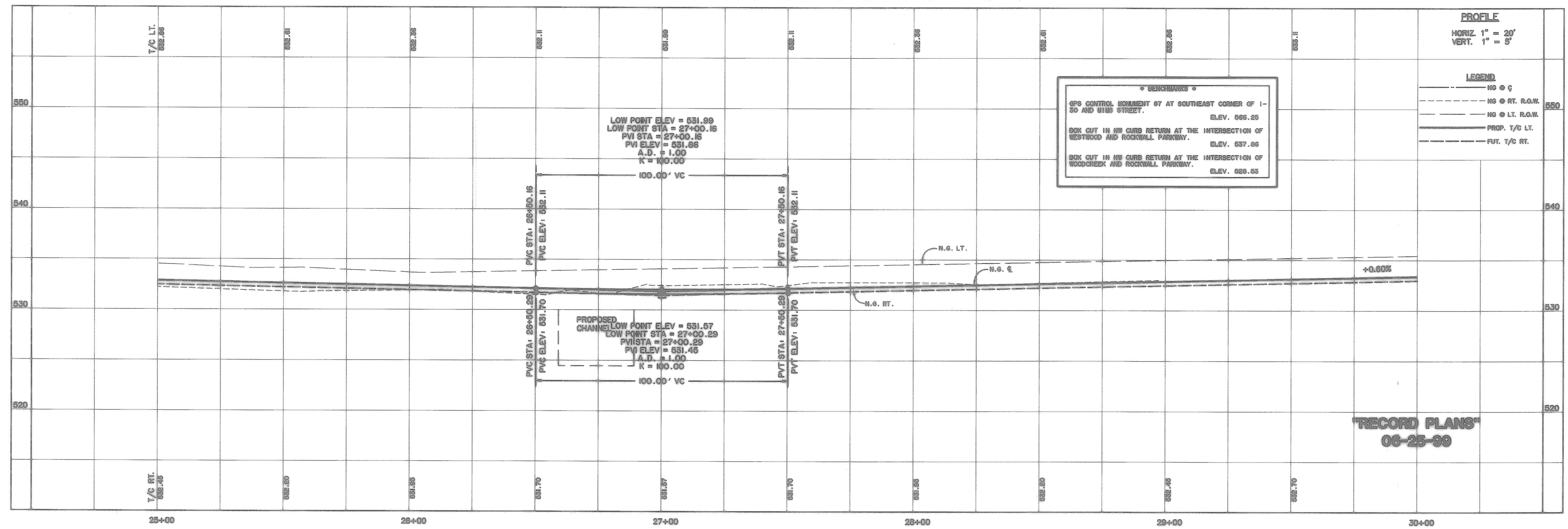


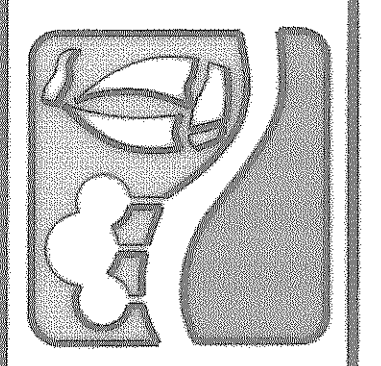
THE CITY OF ROCKWALL STANDARD CONSTRUCTION DETAILS ARE INCORPORATED HEREIN BY REFERENCE. ALL WORK SHALL BE PERFORMED IN ACCORDANCE WITH SHEETS I-15 OF THE LATEST VERSION OF THESE DETAILS, WITH THE EXCEPTION OF THE FOLLOWING:
1. TYPICAL PAVEMENT SECTION.
2. RECESSED CURB INLET.

RALPH HALL PARKWAY



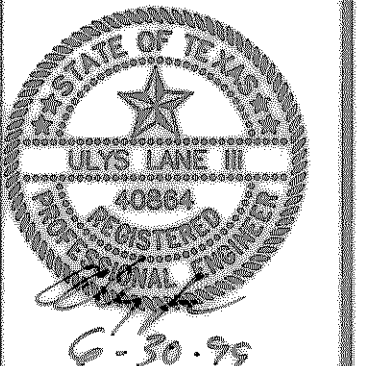
RECORD PLANS
06-25-99

PREPARED BY:
WIA WIER & ASSOCIATES, INC.
ENGINEERS SURVEYORS LAND PLANNERS
4300 BELLEVUE PLACE SUITE 130 ARLINGTON, TEXAS 76010 (817) 497-7700
4105 AMEN CREEK BLVD. SUITE 200 FORT WORTH, TEXAS 76135 (817) 335-4457



RALPH HALL PARKWAY
CITY OF ROCKWALL
ROCKWALL COUNTY, TEXAS

PAVING
PLAN & PROFILE
STA 25+00 TO STA 30+00



COPYRIGHT ©
WIER & ASSOCIATES, INC.
LAST SHEET EDIT
DATE: 6-24-99
WAS: 97067
SHEET NO.
8