

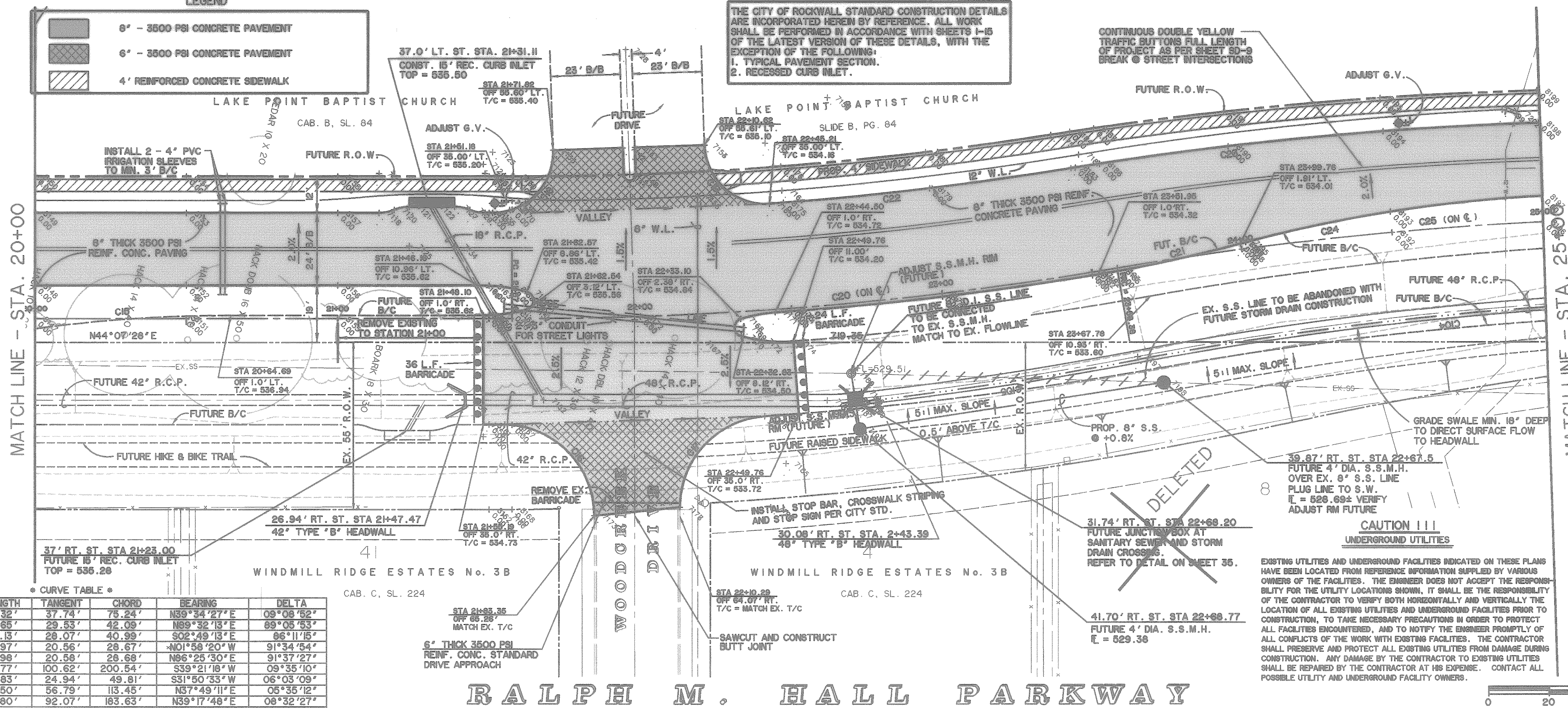
LEGEND

	6" - 3500 PSI CONCRETE PAVEMENT
	6" - 3500 PSI CONCRETE PAVEMENT
	4" REINFORCED CONCRETE SIDEWALK

THE CITY OF ROCKWALL STANDARD CONSTRUCTION DETAILS ARE INCORPORATED HEREIN BY REFERENCE. ALL WORK SHALL BE PERFORMED IN ACCORDANCE WITH SHEETS 1-15 OF THE LATEST VERSION OF THESE DETAILS, WITH THE EXCEPTION OF THE FOLLOWING:
 1. TYPICAL PAVEMENT SECTION.
 2. RECESSED CURB INLET.

MATCH LINE - STA. 20+00

MATCH LINE - STA. 25+00



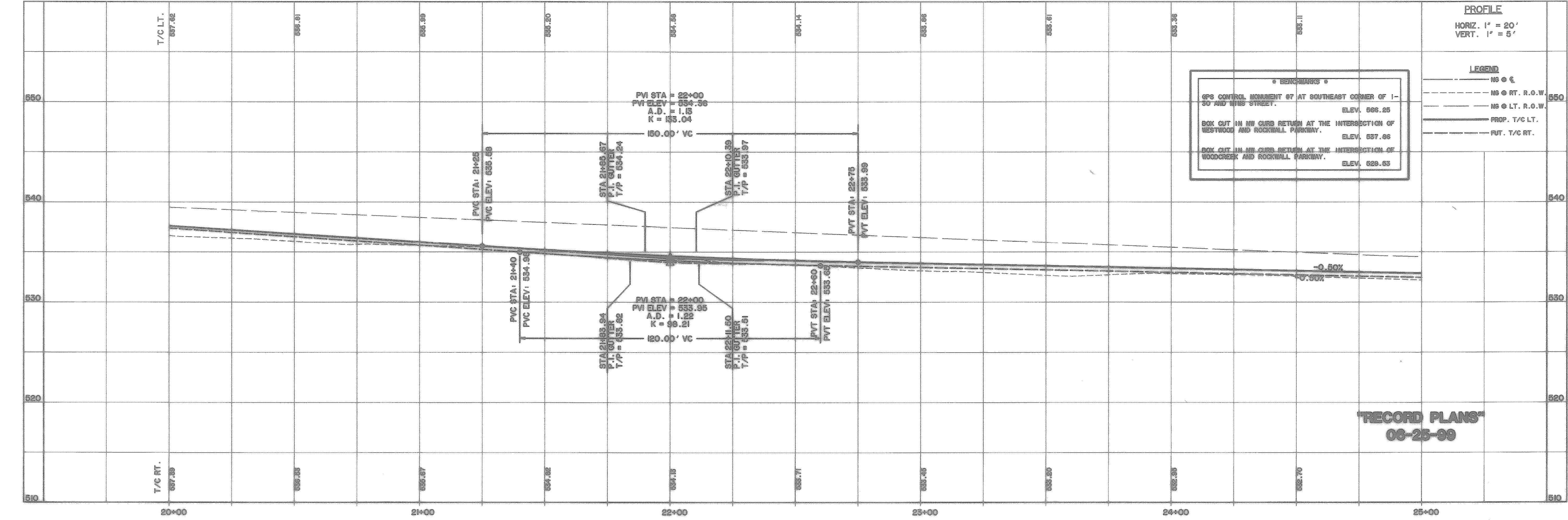
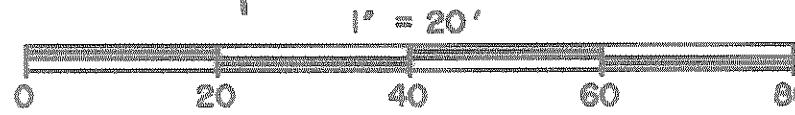
CURVE TABLE

CURVE	RADIUS	LENGTH	TANGENT	CHORD	BEARING	DELTA
C15	471.75'	75.32'	37.74'	75.24'	N39°34'27"E	09°08'52"
C16	30.00'	46.65'	29.53'	42.09'	N89°32'13"E	89°05'53"
C17	30.00'	45.13'	28.07'	40.99'	S02°49'13"E	86°11'15"
C18	20.00'	31.97'	20.56'	29.67'	N01°58'20"W	91°34'54"
C19	20.00'	31.96'	20.56'	29.68'	N89°28'30"E	91°37'27"
C20	1200.00'	200.77'	100.62'	200.64'	S39°21'18"W	09°35'10"
C21	471.75'	49.83'	24.94'	49.81'	S31°50'33"W	06°03'09"
C22	1164.00'	113.50'	56.79'	113.45'	N37°49'11"E	06°35'12"
C23	1233.00'	183.80'	92.07'	183.63'	N39°17'48"E	08°32'27"
C24	471.75'	113.72'	57.13'	113.44'	N35°57'07"E	13°48'40"

RALPH M. HALL PARKWAY

EXISTING UTILITIES AND UNDERGROUND FACILITIES INDICATED ON THESE PLANS HAVE BEEN LOCATED FROM REFERENCE INFORMATION SUPPLIED BY VARIOUS OWNERS OF THE FACILITIES. THE ENGINEER DOES NOT ACCEPT THE RESPONSIBILITY FOR THE UTILITY LOCATIONS SHOWN. IT SHALL BE THE RESPONSIBILITY OF THE CONTRACTOR TO VERIFY BOTH HORIZONTALLY AND VERTICALLY THE LOCATION OF ALL EXISTING UTILITIES AND UNDERGROUND FACILITIES PRIOR TO CONSTRUCTION, TO TAKE NECESSARY PRECAUTIONS IN ORDER TO PROTECT ALL FACILITIES ENCOUNTERED, AND TO NOTIFY THE ENGINEER PROMPTLY OF ALL CONFLICTS OF THE WORK WITH EXISTING FACILITIES. THE CONTRACTOR SHALL PRESERVE AND PROTECT ALL EXISTING UTILITIES FROM DAMAGE DURING CONSTRUCTION. ANY DAMAGE BY THE CONTRACTOR TO EXISTING UTILITIES SHALL BE REPAIRED BY THE CONTRACTOR AT HIS EXPENSE. CONTACT ALL POSSIBLE UTILITY AND UNDERGROUND FACILITY OWNERS.

CAUTION !!!
UNDERGROUND UTILITIES



BENCHMARKS

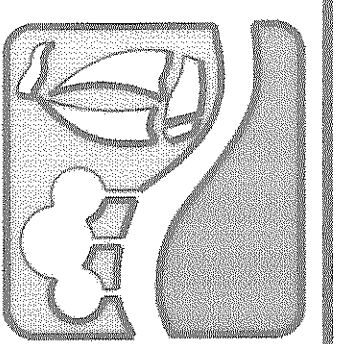
GPS CONTROL MONUMENT 87 AT SOUTHEAST CORNER OF 1-30 AND THIS STREET. ELEV. 526.25

BOX CUT IN NW CURB RETURN AT THE INTERSECTION OF WESTWOOD AND ROCKWALL PARKWAY. ELEV. 537.96

BOX CUT IN NW CURB RETURN AT THE INTERSECTION OF WOODCREEK AND ROCKWALL PARKWAY. ELEV. 529.53

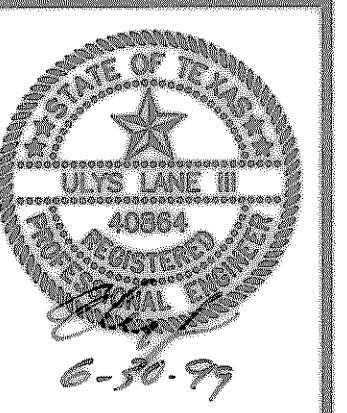
RECORD PLANS
06-25-99

PREPARED BY:
VIA WIER & ASSOCIATES, INC.
 ENGINEERS SURVEYORS LAND PLANNERS
 4300 BELLEVUE PLACE SUITE 130 ARLINGTON, TEXAS 76010 PHONE (817) 467-7700
 4105 AMON CREEK ROAD, SUITE 200 FORT WORTH, TEXAS 76154 PHONE (817) 355-4157



RALPH M. HALL PARKWAY
 CITY OF ROCKWALL
 ROCKWALL COUNTY, TEXAS

PAVING
PLAN & PROFILE
 STA 20+00 TO STA 25+00



COPYRIGHT © WIER & ASSOCIATES, INC.
 LAST SHEET EDIT DATE 06-25-99
 WAA 97067
SHEET NO. 7