

* CURVE TABLE *

CURVE	RADIUS	LENGTH	TANGENT	CHORD	BEARING	DELTA
C14	471.75'	75.32'	37.74'	75.24'	S39°34'27" W	09°08'52"

* BENCHMARKS *

GPS CONTROL MONUMENT #7 AT SOUTHEAST CORNER OF 1-30 AND WIND STREET. ELEV. 586.85

BOX CUT IN HW CURB RETURN AT THE INTERSECTION OF WESTWOOD AND ROCKWALL PARKWAY. ELEV. 537.06

BOX CUT IN HW CURB RETURN AT THE INTERSECTION OF WOODCREEK AND ROCKWALL PARKWAY. ELEV. 528.55

LEGEND

8" - 3500 PSI CONCRETE PAVEMENT

4" REINFORCED CONCRETE SIDEWALK

740/3099 LIMITED PARTNERSHIP
VOL. 620, PG. 69

CONTINUOUS DOUBLE YELLOW TRAFFIC BUTTONS FULL LENGTH OF PROJECT AS PER SHEET SD-3 BREAK @ STREET INTERSECTIONS

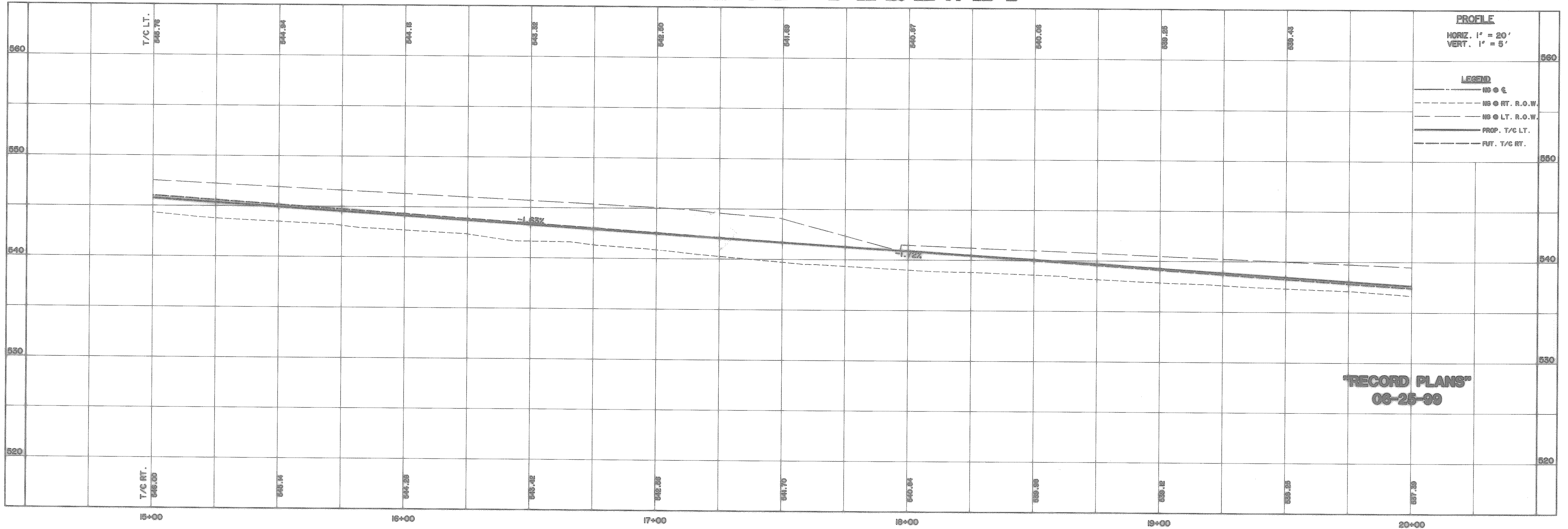
CAUTION !!!
UNDERGROUND UTILITIES

EXISTING UTILITIES AND UNDERGROUND FACILITIES INDICATED ON THESE PLANS HAVE BEEN LOCATED FROM REFERENCE INFORMATION SUPPLIED BY VARIOUS OWNERS OF THE FACILITIES. THE ENGINEER DOES NOT ACCEPT THE RESPONSIBILITY FOR THE UTILITY LOCATIONS SHOWN. IT SHALL BE THE RESPONSIBILITY OF THE CONTRACTOR TO VERIFY BOTH HORIZONTALLY AND VERTICALLY THE LOCATION OF ALL EXISTING UTILITIES AND UNDERGROUND FACILITIES PRIOR TO CONSTRUCTION. TO TAKE NECESSARY PRECAUTIONS IN ORDER TO PROTECT ALL FACILITIES ENCOUNTERED, AND TO NOTIFY THE ENGINEER PROMPTLY OF ALL CONFLICTS OF THE WORK WITH EXISTING FACILITIES. THE CONTRACTOR SHALL PRESERVE AND PROTECT ALL EXISTING UTILITIES FROM DAMAGE DURING CONSTRUCTION. ANY DAMAGE BY THE CONTRACTOR TO EXISTING UTILITIES SHALL BE REPAIRED BY THE CONTRACTOR AT HIS EXPENSE. CONTACT ALL POSSIBLE UTILITY AND UNDERGROUND FACILITY OWNERS.

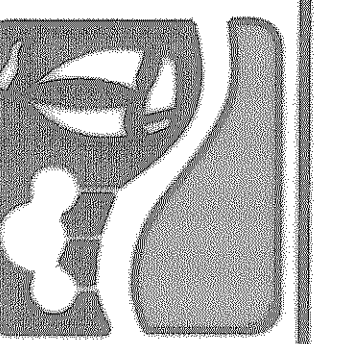
THE CITY OF ROCKWALL STANDARD CONSTRUCTION DETAILS ARE INCORPORATED HEREIN BY REFERENCE. ALL WORK SHALL BE PERFORMED IN ACCORDANCE WITH SHEETS 1-15 OF THE LATEST VERSION OF THESE DETAILS, WITH THE EXCEPTION OF THE FOLLOWING:

- TYPICAL PAVEMENT SECTION.
- RECESSED CURB INLET.

RALPH HALL PARKWAY

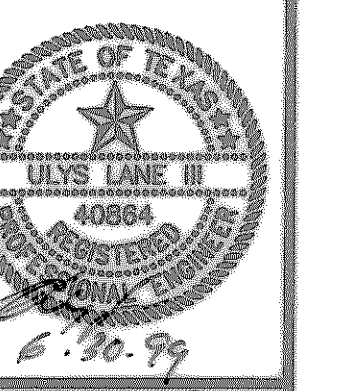


PREPARED BY:
WIA WIER & ASSOCIATES, INC.
ENGINEERS SURVEYORS LAND PLANNERS
4300 BELLEVUE PLACE SUITE 130 ARLINGTON, TEXAS 76010 (817) 467-7700
4800 NORTH CARRER BLVD. SUITE 200 FORT WORTH, TEXAS 76134 (817) 355-4477



RALPH HALL PARKWAY
CITY OF ROCKWALL
ROCKWALL COUNTY, TEXAS

PAVING
PLAN & PROFILE
STA 15+00 TO STA 20+00



COPYRIGHT ©
WIER & ASSOCIATES, INC.
LAST SHEET EDIT
DATE 06-25-99
WAW 97057
SHEET NO.
6

TIME 10:06 FILE 1 PAVE4