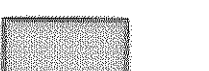

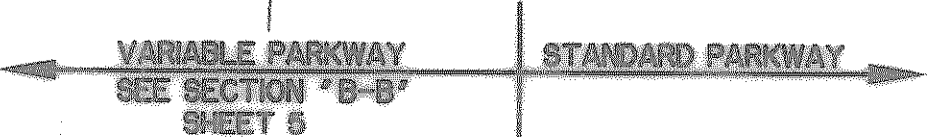


LEGEND

-  8" - 3500 PSI CONCRETE PAVEMENT (ALTERNATE BID)
-  4' REINFORCED CONCRETE SIDEWALK

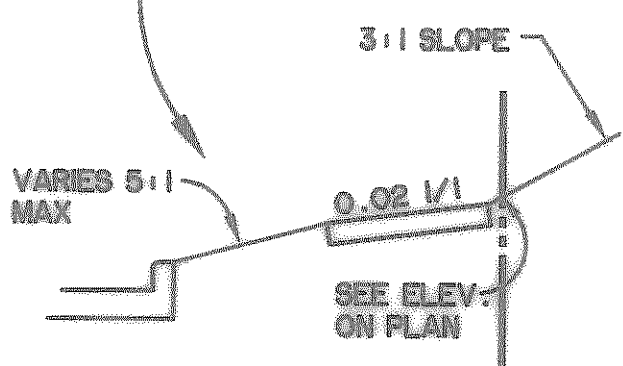
PROPOSED DETENTION POND (BY OTHERS)



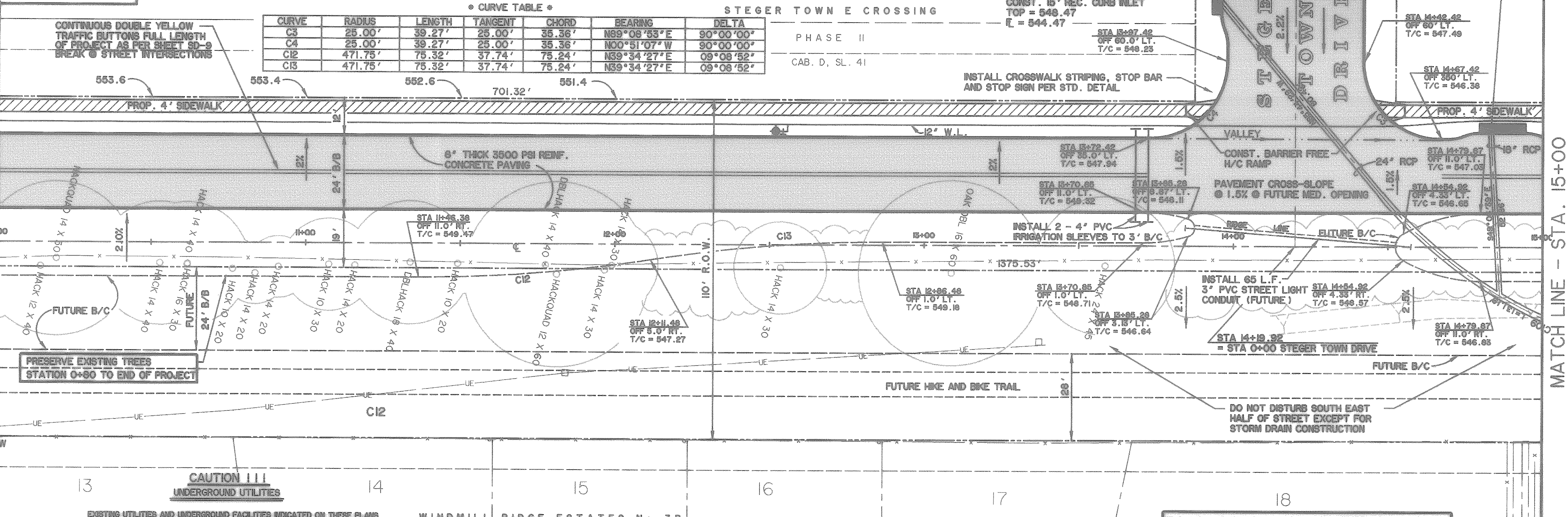
\* CURVE TABLE \*

CURVE	RADIUS	LENGTH	TANGENT	CHORD	BEARING	DELTA
C3	25.00'	39.27'	25.00'	35.36'	N89°08'53"E	90°00'00"
C4	25.00'	39.27'	25.00'	35.36'	N00°51'07"W	90°00'00"
C12	471.75'	75.32'	37.74'	75.24'	N39°34'27"E	08°08'52"
C13	471.75'	75.32'	37.74'	75.24'	N39°34'27"E	08°08'52"

NOTE: SECTION "B-B" NOT CONSTRUCTED S/D SLOPE PROVIDED TO 12+00 LT.



SECTION "B-B"

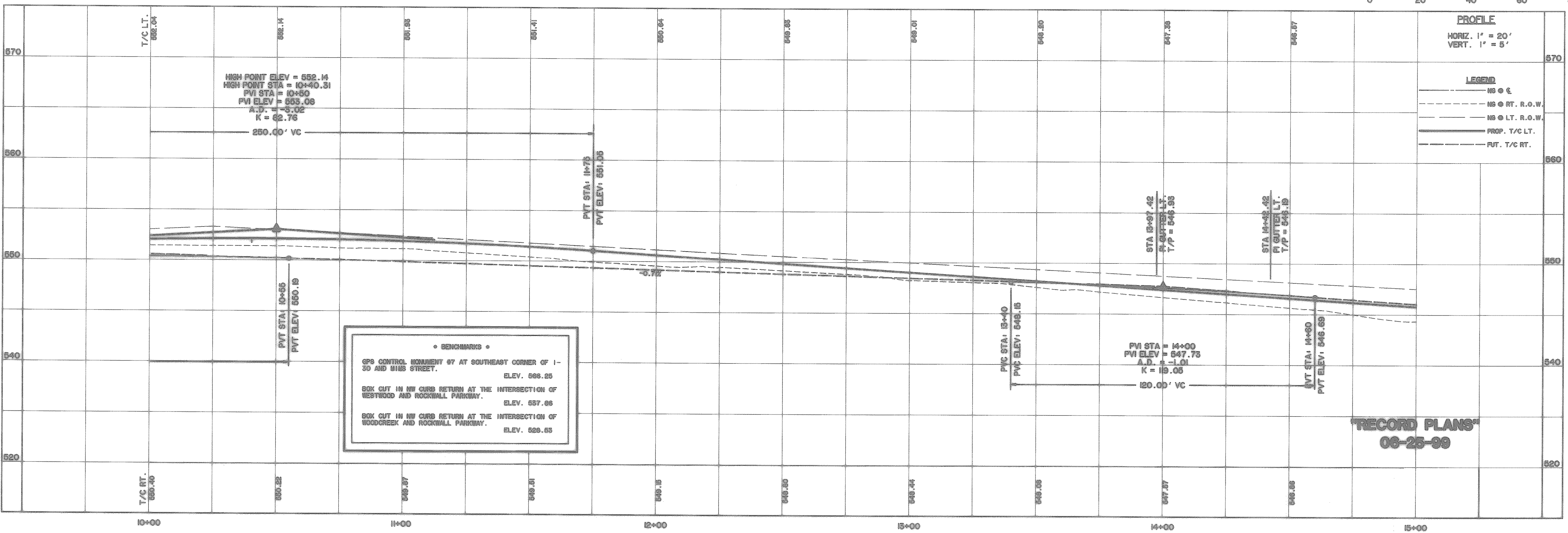


**CAUTION !!!**  
UNDERGROUND UTILITIES

EXISTING UTILITIES AND UNDERGROUND FACILITIES INDICATED ON THESE PLANS HAVE BEEN LOCATED FROM REFERENCE INFORMATION SUPPLIED BY VARIOUS OWNERS OF THE FACILITIES. THE ENGINEER DOES NOT ACCEPT THE RESPONSIBILITY FOR THE UTILITY LOCATIONS SHOWN. IT SHALL BE THE RESPONSIBILITY OF THE CONTRACTOR TO VERIFY BOTH HORIZONTALLY AND VERTICALLY THE LOCATION OF ALL EXISTING UTILITIES AND UNDERGROUND FACILITIES PRIOR TO CONSTRUCTION, TO TAKE NECESSARY PRECAUTIONS IN ORDER TO PROTECT ALL FACILITIES ENCOUNTERED, AND TO NOTIFY THE ENGINEER PROMPTLY OF ALL CONFLICTS OF THE WORK WITH EXISTING FACILITIES. THE CONTRACTOR SHALL PRESERVE AND PROTECT ALL EXISTING UTILITIES FROM DAMAGE DURING CONSTRUCTION. ANY DAMAGE BY THE CONTRACTOR TO EXISTING UTILITIES SHALL BE REPAIRED BY THE CONTRACTOR AT HIS EXPENSE. CONTACT ALL POSSIBLE UTILITY AND UNDERGROUND FACILITY OWNERS.

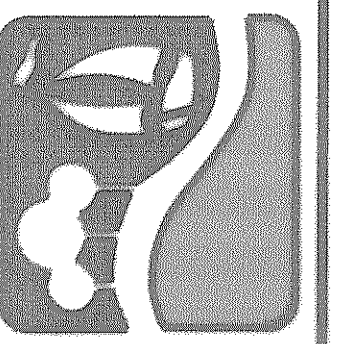
THE CITY OF ROCKWALL STANDARD CONSTRUCTION DETAILS ARE INCORPORATED HEREIN BY REFERENCE. ALL WORK SHALL BE PERFORMED IN ACCORDANCE WITH SHEETS 1-15 OF THE LATEST VERSION OF THESE DETAILS, WITH THE EXCEPTION OF THE FOLLOWING:  
1. TYPICAL PAVEMENT SECTION.  
2. RECESSED CURB INLET.

RALPH HALL PARKWAY



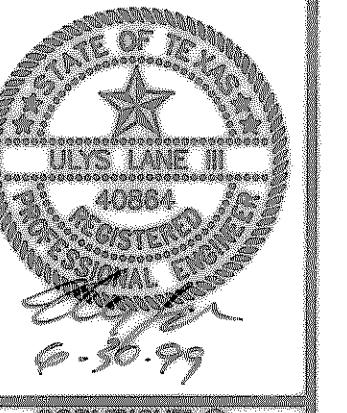
RECORD PLANS  
06-25-09

PREPARED BY:  
**VIA WIER & ASSOCIATES, INC.**  
ENGINEERS SURVEYORS LAND PLANNERS  
4320 BELLEVUE PLACE SUITE 113 ARLINGTON, TEXAS 76010 (817) 497-7700  
4100 AMH CENTER BLDG. SUITE 200 FORT WORTH, TEXAS 76165 (817) 328-4457



RALPH HALL PARKWAY  
CITY OF ROCKWALL  
ROCKWALL COUNTY, TEXAS

PAVING  
PLAN & PROFILE  
STA 10+00 TO STA 15+00



COPYRIGHT ©  
VIA WIER & ASSOCIATES, INC.  
LAST SHEET EDIT  
DATE 06-25-09  
WAS 97057

SHEET NO.  
5