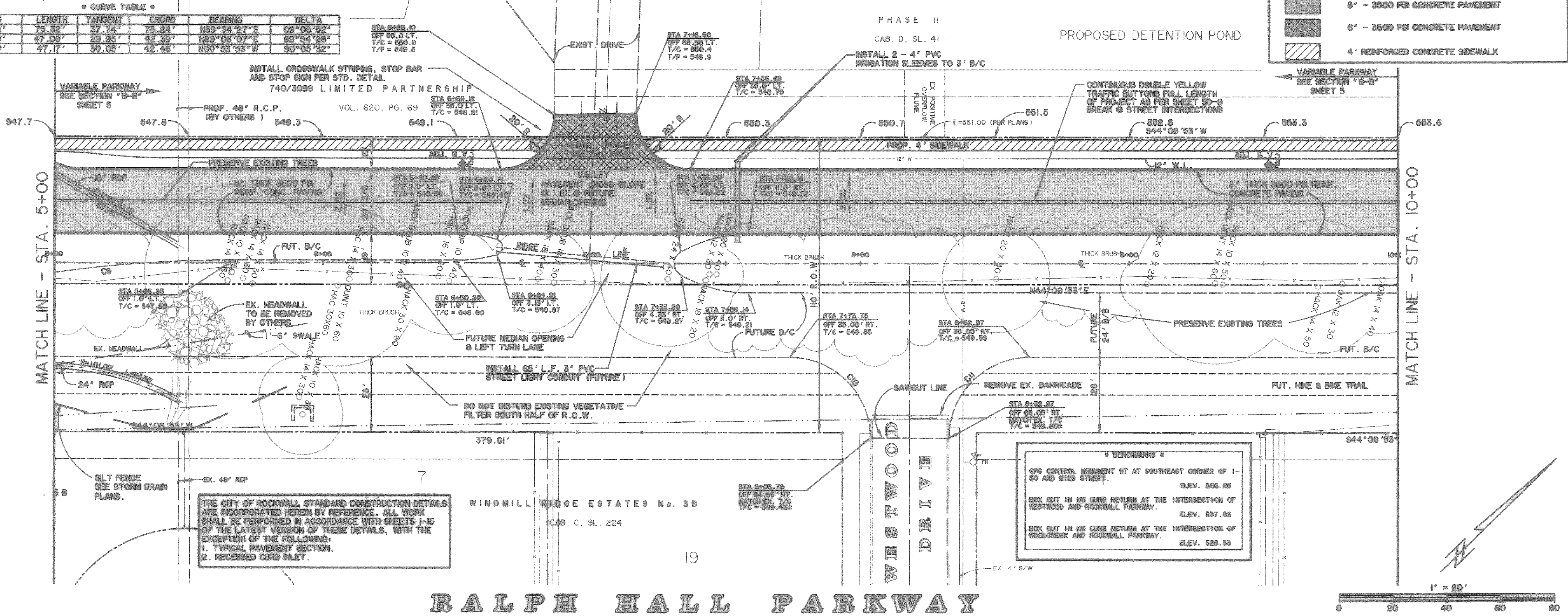


* CURVE TABLE *

CURVE	RADIUS	LENGTH	TANGENT	CHORD	BEARING	DELTA
C9	471.75'	75.32'	37.74'	75.24'	N89°34'27"E	09°08'52"
C10	30.00'	47.08'	29.95'	42.39'	N89°06'07"E	89°54'28"
C11	30.00'	47.17'	30.05'	42.46'	N00°53'53"W	90°05'32"



LEGEND

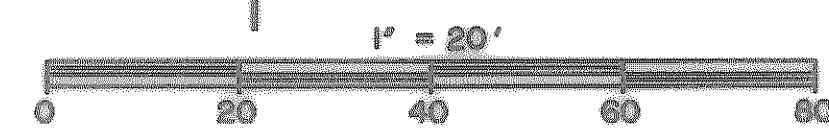
	6" - 3500 PSI CONCRETE PAVEMENT
	6" - 3500 PSI CONCRETE PAVEMENT
	4" REINFORCED CONCRETE SIDEWALK

MATCH LINE - STA. 5+00

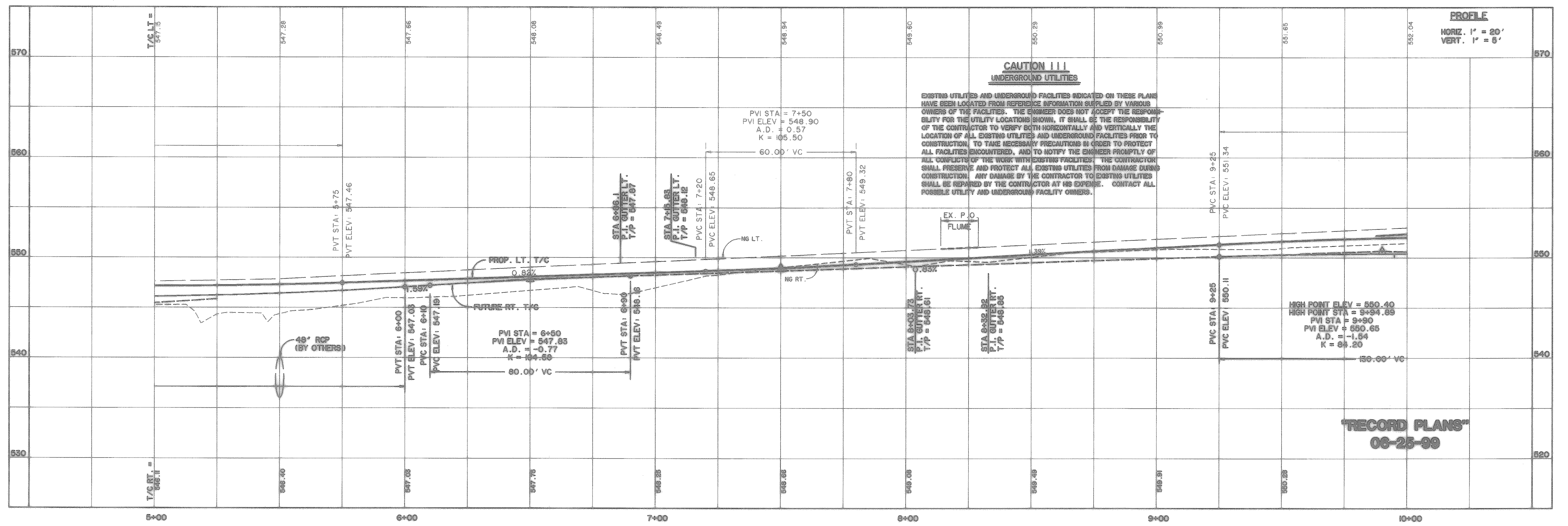
MATCH LINE - STA. 10+00

THE CITY OF ROCKWALL STANDARD CONSTRUCTION DETAILS ARE INCORPORATED HEREIN BY REFERENCE. ALL WORK SHALL BE PERFORMED IN ACCORDANCE WITH SHEETS 1-15 OF THE LATEST VERSION OF THESE DETAILS, WITH THE EXCEPTION OF THE FOLLOWING:
 1. TYPICAL PAVEMENT SECTION.
 2. RECESSED CURB INLET.

BENCHMARKS
 GPS CONTROL MONUMENT 87 AT SOUTHEAST CORNER OF 1-30 AND WIND STREET. ELEV. 566.25
 BOX OUT IN NW CURB RETURN AT THE INTERSECTION OF WESTWOOD AND ROCKWALL PARKWAY. ELEV. 537.66
 BOX OUT IN NW CURB RETURN AT THE INTERSECTION OF WOODCREEK AND ROCKWALL PARKWAY. ELEV. 529.55



RALPH HALL PARKWAY



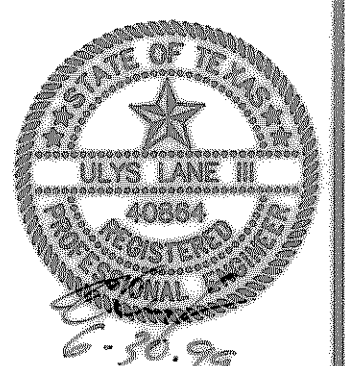
RECORD PLANS
 06-25-99

PREPARED BY:
WIA WIER & ASSOCIATES, INC.
 ENGINEERS SURVEYORS LAND PLANNERS
 4300 BELLEVUE PLACE SUITE 130 ARLINGTON, TEXAS 76010 (817)467-7700
 410 AMN CENTER BLVD. SUITE 200 FORT WORTH, TEXAS 76164 (817)565-4057



RALPH HALL PARKWAY
CITY OF ROCKWALL
ROCKWALL COUNTY, TEXAS

PAVING
PLAN & PROFILE
STA 5+00 TO STA 10+00



COPYRIGHT © WIER & ASSOCIATES, INC.
 LAST SHEET EDIT DATE 06-25-99
 WAB 97057

SHEET NO.
 4

TIME: 2:02PM FILE: PAVE2.DWG