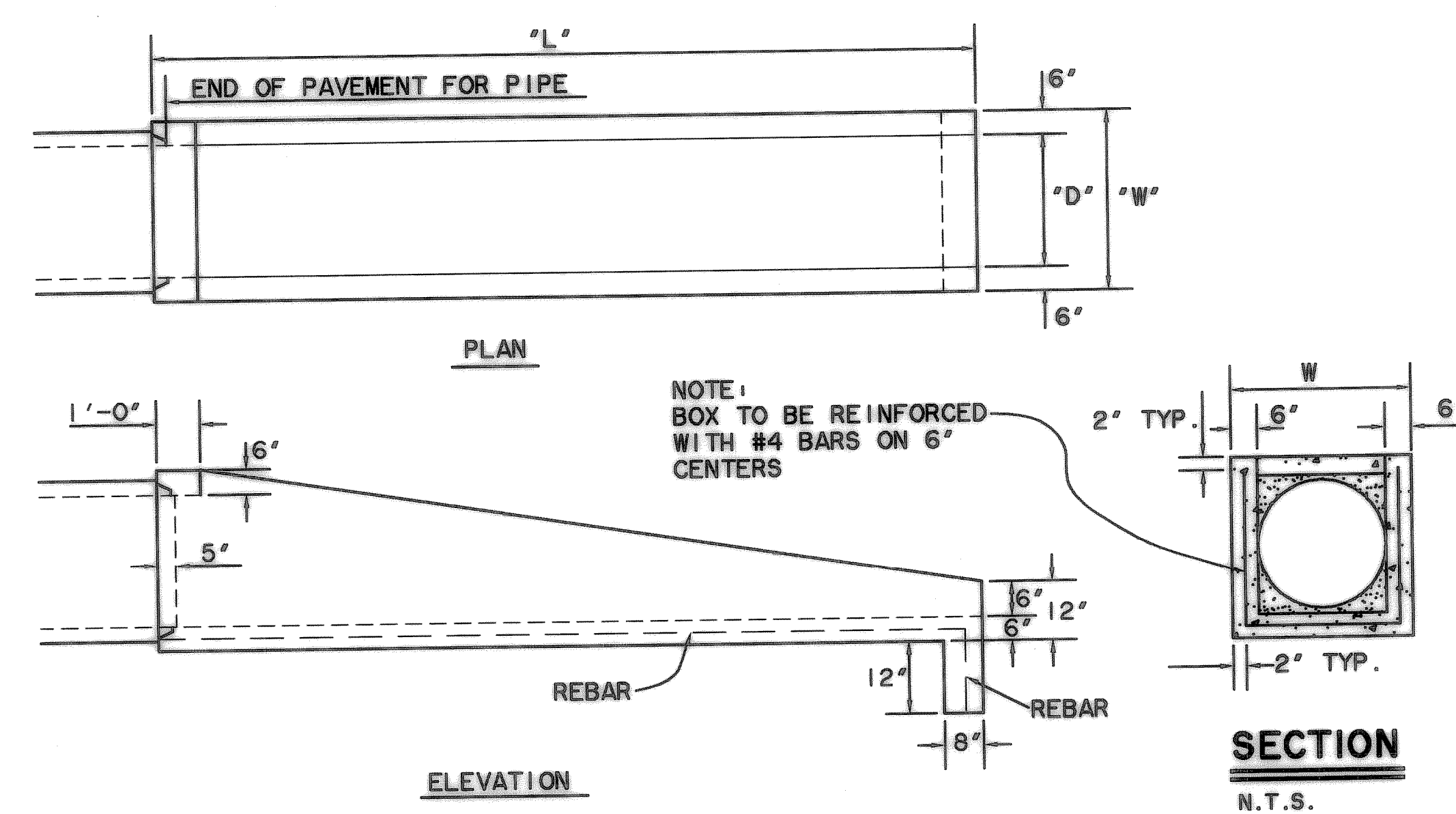
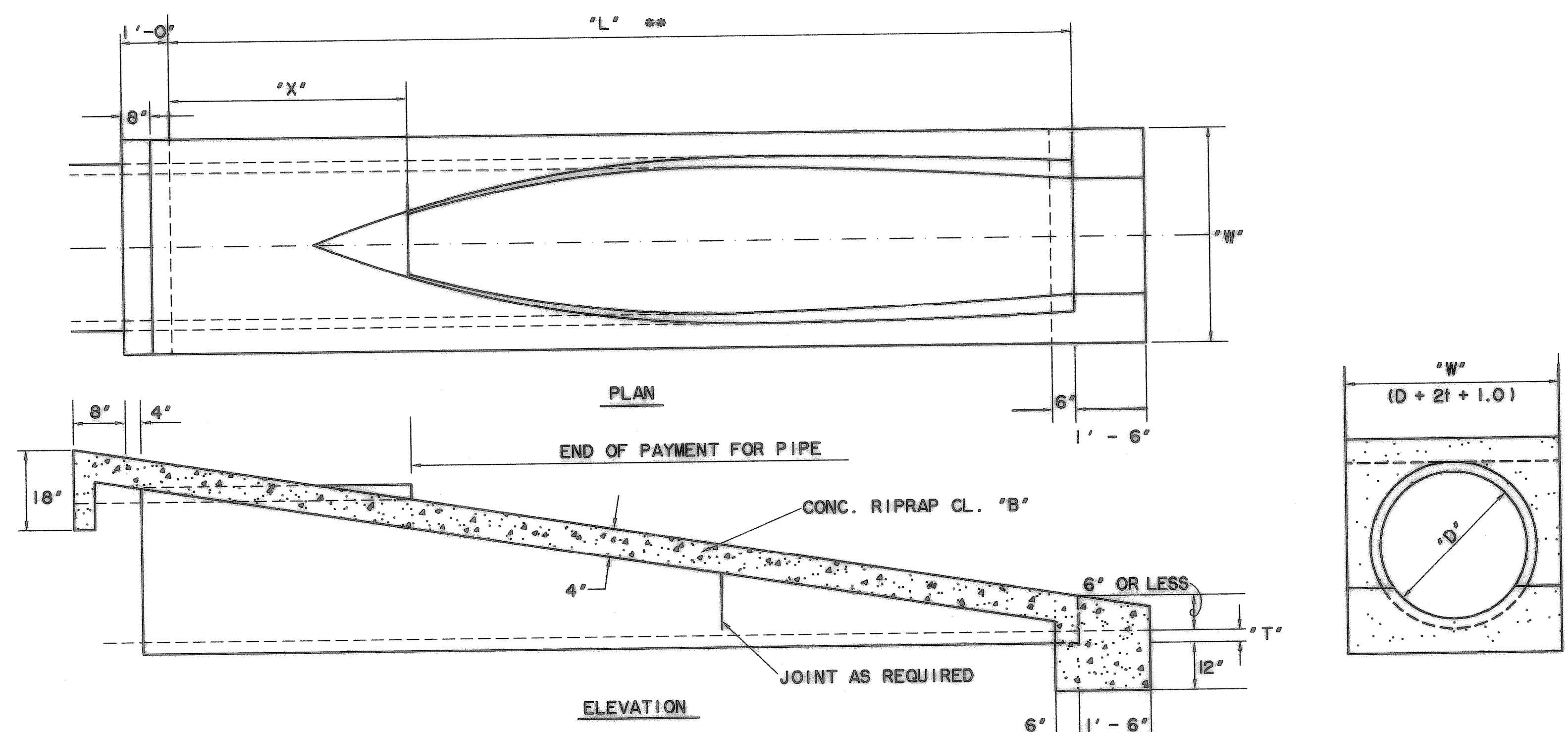


\*\* BASED ON 6" DROP AT END OF PIPE.



**SLOPED CONCRETE PIPE**

N.T.S.  
OPTION ONE

"D"	SLOPE	"T" *	"W" (MIN.)	"L"	"X"
18"	3:1	2'-1/4"	2' 10-1/2"	5' 3-3/4"	1' - 9"
18"	4:1	2'-1/4"	2' 10-1/2"	7' - 9"	3' - 0"
18"	6:1	2'-1/4"	2' 10-1/2"	10' 1-1/2"	3' - 0"
21"	3:1	2'-1/2"	3' - 2"	5' - 9"	1' 4-1/2"
21"	4:1	2'-1/2"	3' - 2"	8' - 4"	2' - 6"
21"	6:1	2'-1/2"	3' - 2"	11' - 0"	2' - 3"
24"	3:1	3"	3' - 6"	7' - 6"	3' - 0"
24"	4:1	3"	3' - 6"	8' - 0"	2' - 0"
24"	6:1	3"	3' - 6"	12' - 0"	3' - 0"
27"	3:1	3-1/4"	3' 9-1/2"	7' 10-1/2"	2' 7-1/2"
27"	4:1	3-1/4"	3' 9-1/2"	10' - 0"	3' - 0"
27"	6:1	3-1/4"	3' 9-1/2"	15' - 0"	4' - 6"
30"	3:1	3-1/2"	4' - 1"	8' - 3"	2' - 3"
30"	4:1	3-1/2"	4' - 1"	10' - 6"	2' - 6"
30"	6:1	3-1/2"	4' - 1"	15' - 9"	3' - 9"

**SLOPED CLASS "A" CONCRETE BOX**

N.T.S.  
OPTION TWO

"D"	SLOPE	"W"	"L"
18"	3:1	2'-6"	4'6-3/4"
18"	4:1	2'-6"	5'-9"
18"	6:1	2'-6"	8'1-1/2"
21"	3:1	2'-9"	5'4-1/2"
21"	4:1	2'-9"	6'-10"
21"	6:1	2'-9"	9'-9"
24"	3:1	3'-0"	6'-3"
24"	4:1	3'-0"	8'-0"
24"	6:1	3'-0"	11'-6"
27"	3:1	3'-3"	7'0-3/4"
27"	4:1	3'-3"	9'-1"
27"	6:1	3'-3"	13'1-1/2"
30"	3:1	3'-6"	7'10-1/2"
30"	4:1	3'-6"	10'-2"
30"	6:1	3'-6"	14'-9"

"RECORD PLANS"  
06-25-99

DATE: 06-27-99 TIME: 4:15PM FILE: SAFETY.DWG

REVISIONS	ITEM	DATE	BY
5			
4			
3			
2			
1			

**STORM DRAIN  
TYPE "P" HEADWALLS**

**CITY OF ROCKWALL**

ENGINEERING DEPARTMENT

DATE: NOV., 1997	SHEET NO. SD-15
---------------------	--------------------