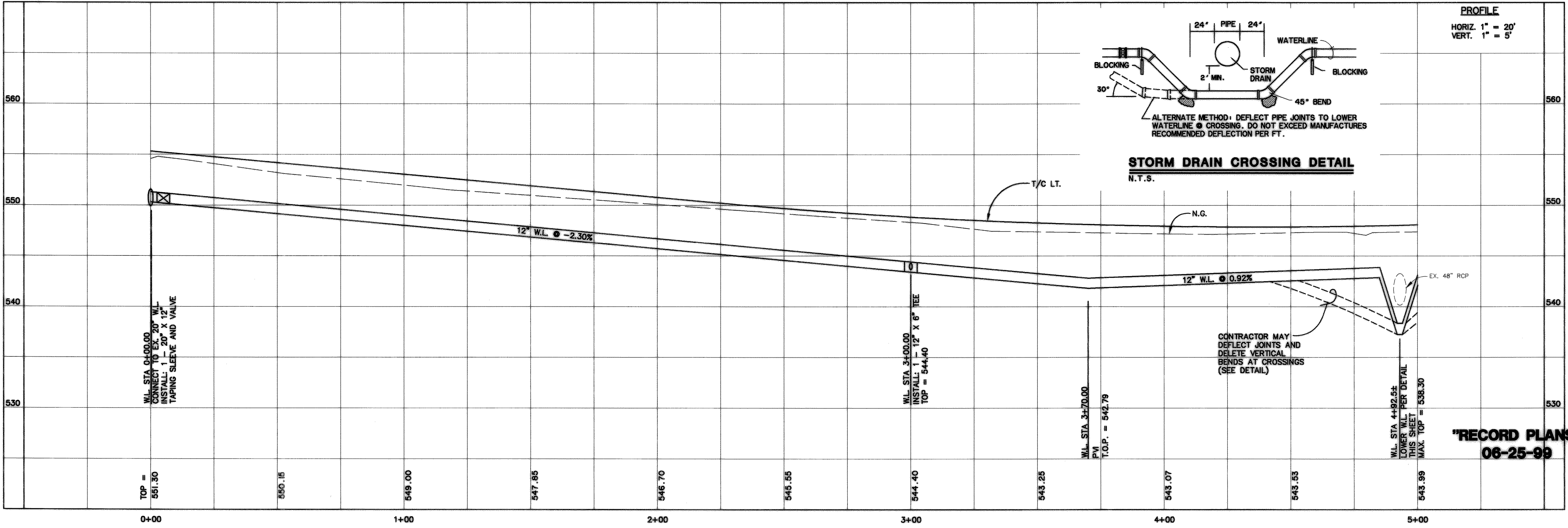


12" WATER LINE



"RECORD PLANS"
06-25-99

TIME 10:17 FILE: WATER1

740/3099 LIMITED PARTNERSHIP
VOL. 620, PG. 69

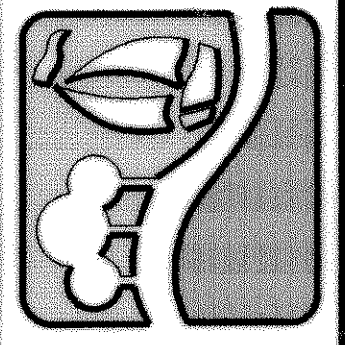
STA 3+00.00 12" W.L.
INSTALL: 1 - 12" X 6" TEE
1 - 6" G.V.
1 - F.H. 3" B/C

DEFLECT PROP. W.L. AROUND
PROP. INLET MAINTAIN MIN. 2'
CLEARANCE BETWEEN INLET AND W.L.
DO NOT EXCEED MANUFACTURERS MAX.
ALLOWABLE DEFLECTION PER JOINT

STA 0+00.00 12" W.L.
= 39' LT. ST. STA 0+55.91
CONNECT TO EX. 20" W.L.
INSTALL: 1 - 20" X 12" TAPPING
SLEEVE AND VALVE

NOTE: USE FLANGED 6" FITTINGS ON FIRE
HYDRANT TEES & BENDS.

PREPARED BY:
WIA WIER & ASSOCIATES, INC.
ENGINEERS SURVEYORS LAND PLANNERS
4300 BELTWAY PLACE SUITE 130 ARLINGTON, TEXAS 76010 METRO (817)467-7700
4108 AMON CARTER BLVD. SUITE 200 FORT WORTH, TEXAS 76155 METRO (817)355-9437



RALPH HALL PARKWAY
CITY OF ROCKWALL
ROCKWALL COUNTY, TEXAS

12" WATER LINE
PLAN & PROFILE
STA 0+00 TO STA 5+00



COPYRIGHT ©
WIER & ASSOCIATES, INC.
LAST SHEET EDIT
DATED 06-29-99
WAR 97057

SHEET NO.
25