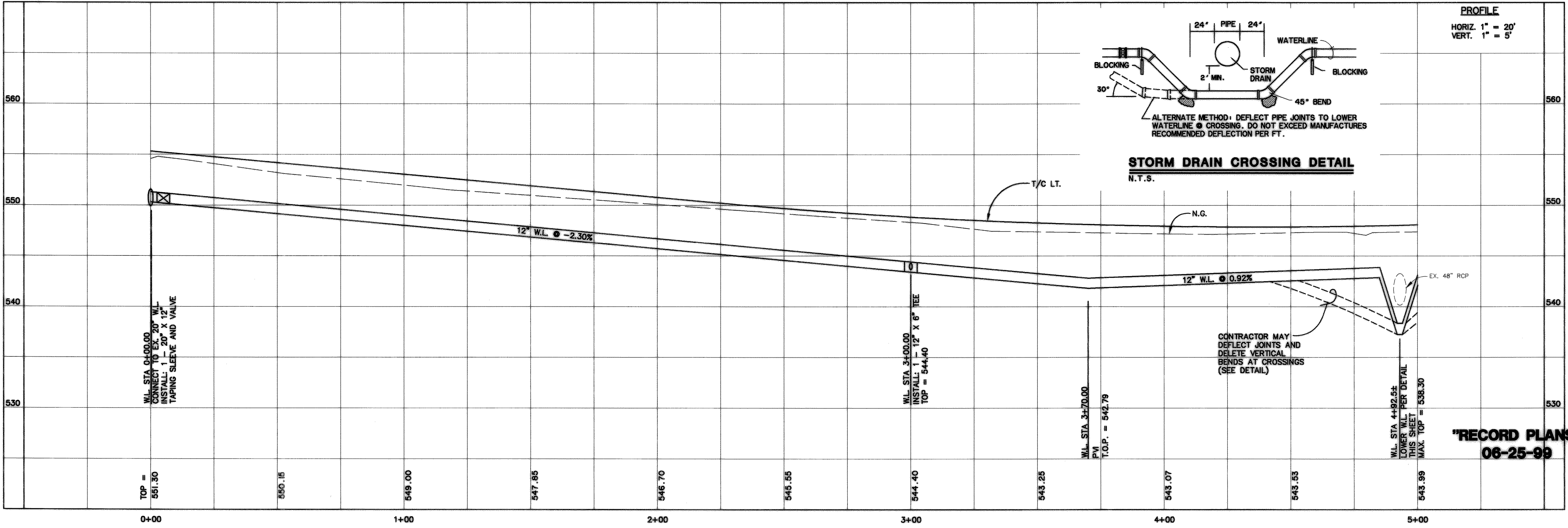


12" WATER LINE



"RECORD PLANS"
06-25-99

740/3099 LIMITED PARTNERSHIP
VOL. 620, PG. 69

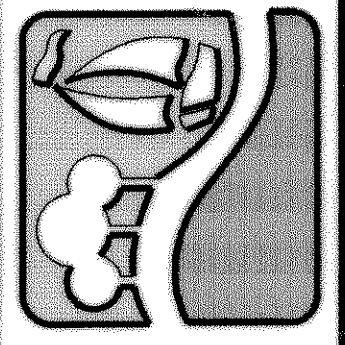
STA 3+00.00 12" W.L.
INSTALL: 1 - 12" X 6" TEE
1 - 6" G.V.
1 - F.H. 3" B/C

DEFLECT PROP. W.L. AROUND
PROP. INLET MAINTAIN MIN. 2'
CLEARANCE BETWEEN INLET AND W.L.
DO NOT EXCEED MANUFACTURERS MAX.
ALLOWABLE DEFLECTION PER JOINT

STA 0+00.00 12" W.L.
= 39' LT. ST. STA 0+55.91
CONNECT TO EX. 20" W.L.
INSTALL: 1 - 20" X 12" TAPPING
SLEEVE AND VALVE

NOTE: USE FLANGED 6" FITTINGS ON FIRE
HYDRANT TEES & BENDS.

PREPARED BY:
WIA WIER & ASSOCIATES, INC.
ENGINEERS SURVEYORS LAND PLANNERS
4300 BELTWAY PLACE SUITE 130 ARLINGTON, TEXAS 76010 METRO (817)467-7700
4108 AMON CARTER BLVD. SUITE 200 FORT WORTH, TEXAS 76155 METRO (817)355-9437



RALPH HALL PARKWAY
CITY OF ROCKWALL
ROCKWALL COUNTY, TEXAS

12" WATER LINE
PLAN & PROFILE
STA 0+00 TO STA 5+00

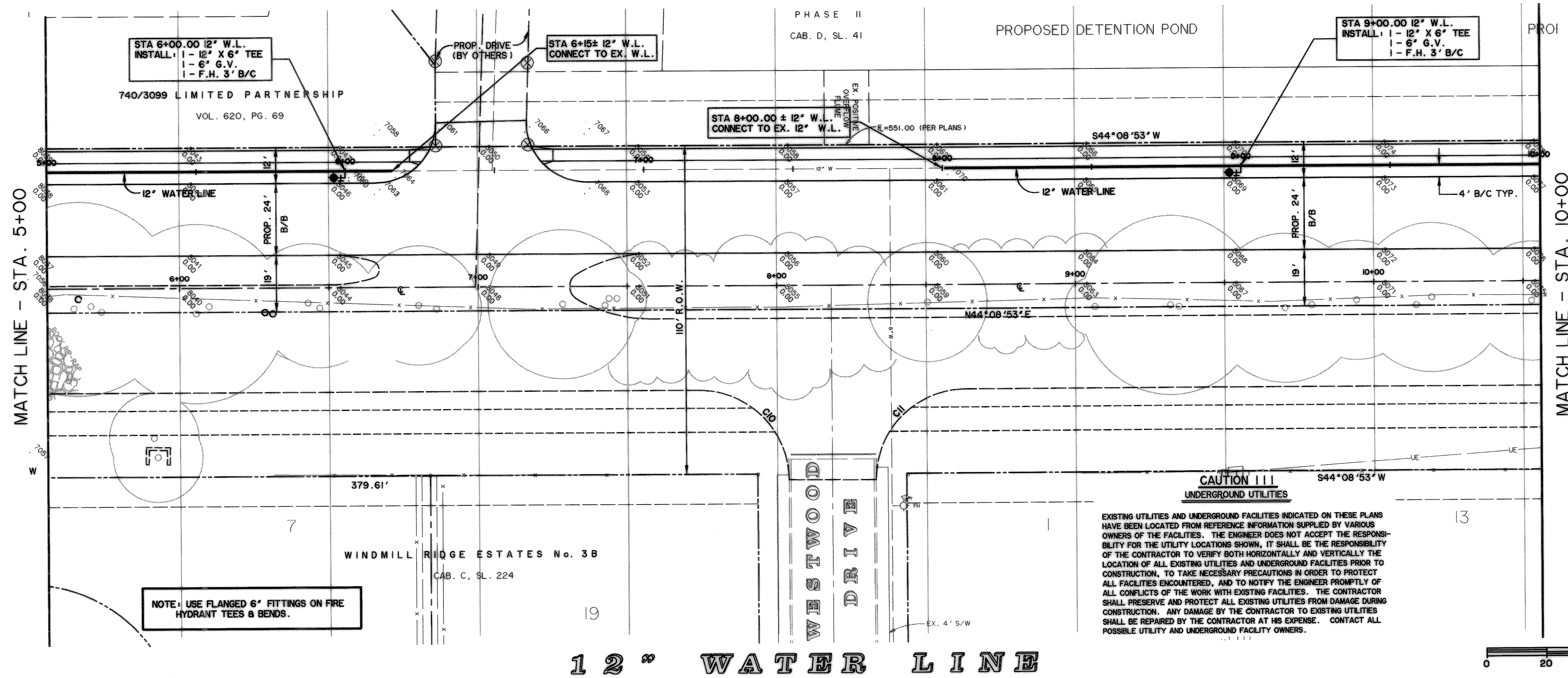


COPYRIGHT ©
WIER & ASSOCIATES, INC.
LAST SHEET EDIT
DATED 06-29-99
WAR 97057

SHEET NO.
25

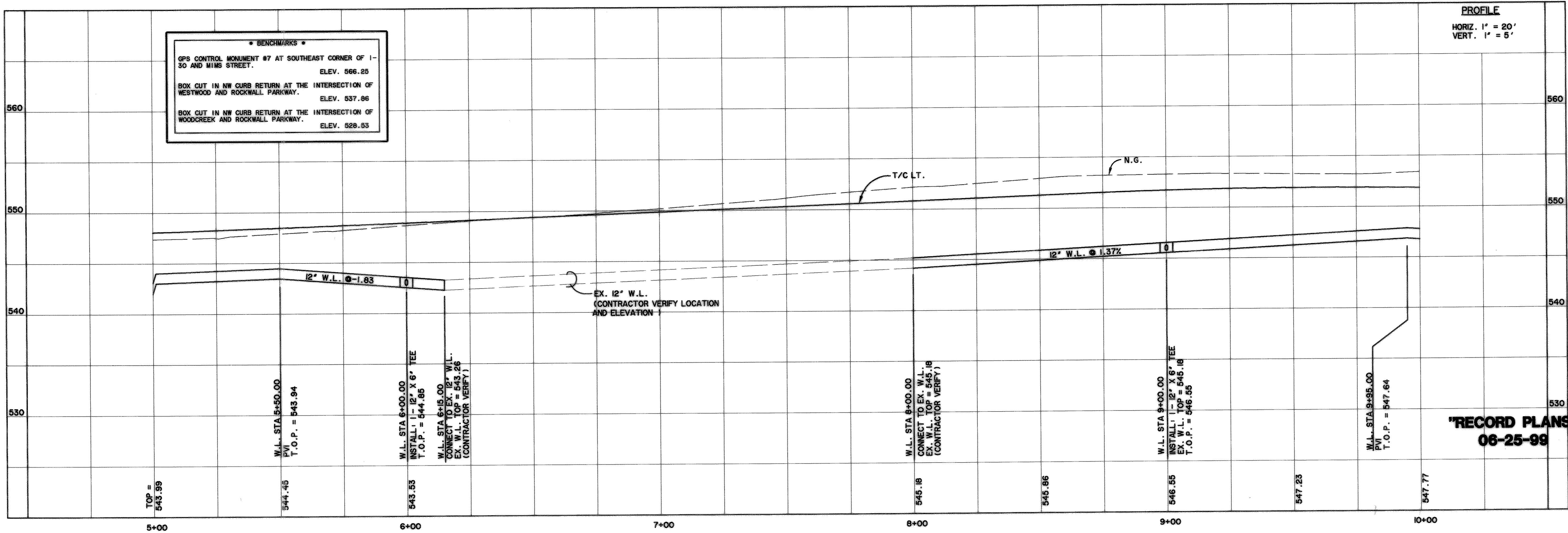
TIME 10:17 FILE: WATER1

TIME 10:19 FILE: C:\97057\WATER2



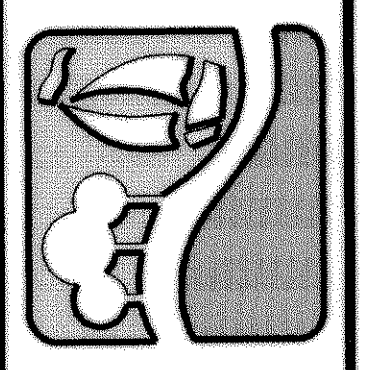
12" WATER LINE

*** BENCHMARKS ***
 GPS CONTROL MONUMENT #7 AT SOUTHEAST CORNER OF 1-30 AND WIMS STREET. ELEV. 566.25
 BOX CUT IN NW CURB RETURN AT THE INTERSECTION OF WESTWOOD AND ROCKWALL PARKWAY. ELEV. 537.86
 BOX CUT IN NW CURB RETURN AT THE INTERSECTION OF WOODCREEK AND ROCKWALL PARKWAY. ELEV. 528.53



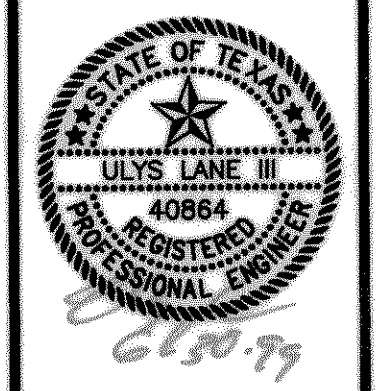
"RECORD PLANS"
 06-25-99

PREPARED BY:
VIA WIER & ASSOCIATES, INC.
 ENGINEERS SURVEYORS LAND PLANNERS
 4300 BELLEVUE PLACE SUITE 130 ARLINGTON, TEXAS 76018 METRO (817)467-7700
 4108 AMON CARTER BLVD. SUITE 200 FORT WORTH, TEXAS 76155 METRO (817)355-4437

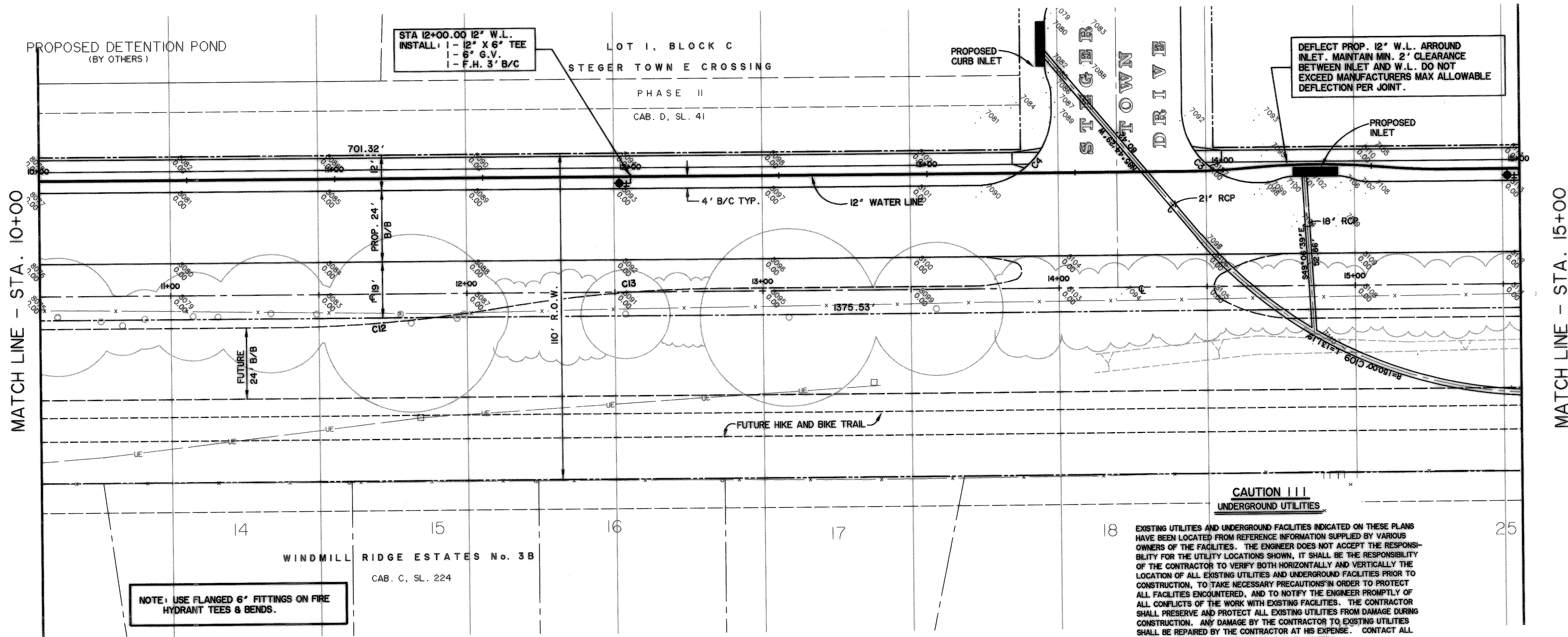


RALPH HALL PARKWAY
CITY OF ROCKWALL
ROCKWALL COUNTY, TEXAS

12" WATER LINE
PLAN & PROFILE
STA 5+00 TO STA 10+00



COPYRIGHT ©
 WIER & ASSOCIATES, INC.
 LAST SHEET EDIT
 DATED 06-29-99
 WA# 97057
SHEET NO.
26



NOTE: USE FLANGED 6" FITTINGS ON FIRE HYDRANT TEES & BENDS.

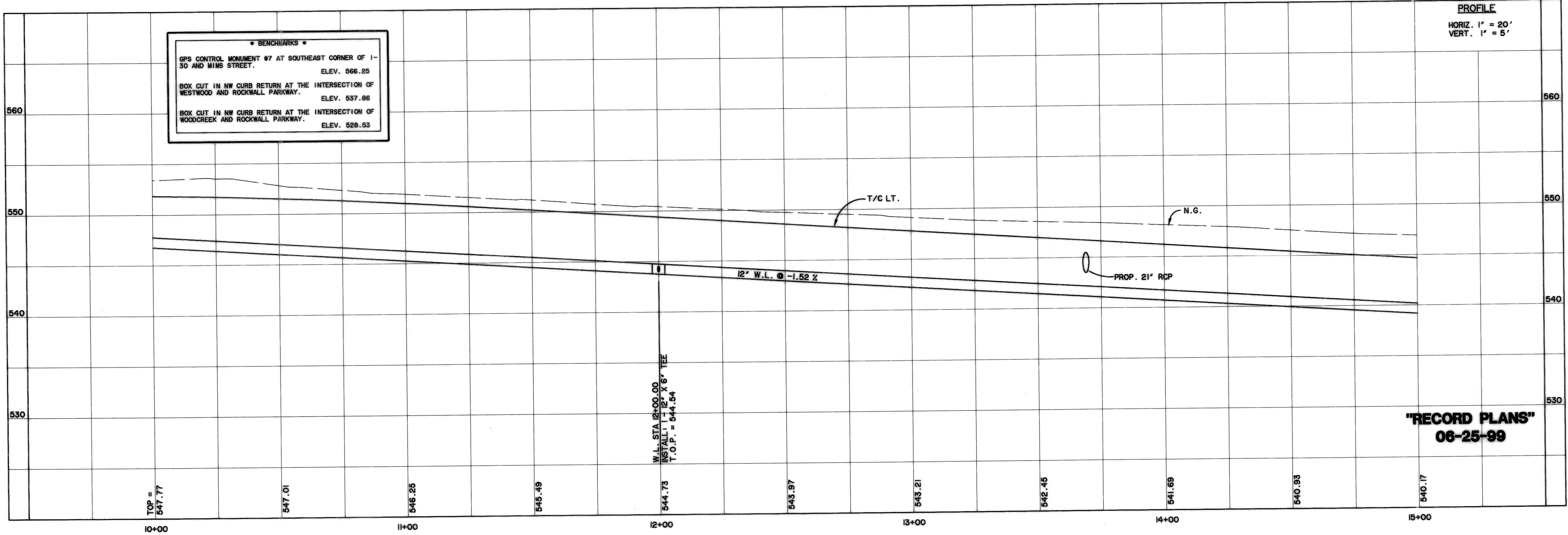
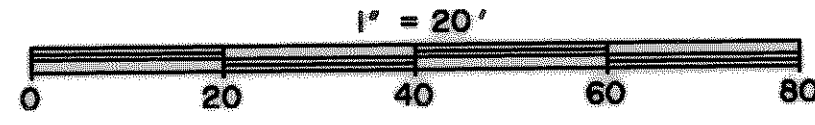
STA 12+00.00 12" W.L.
 INSTALL: 1 - 12" X 6" TEE
 1 - 6" G.V.
 1 - F.H. 3' B/C

DEFLECT PROP. 12" W.L. AROUND INLET. MAINTAIN MIN. 2' CLEARANCE BETWEEN INLET AND W.L. DO NOT EXCEED MANUFACTURERS MAX ALLOWABLE DEFLECTION PER JOINT.

CAUTION !!!
 UNDERGROUND UTILITIES

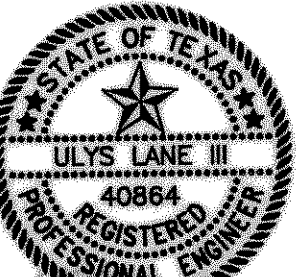
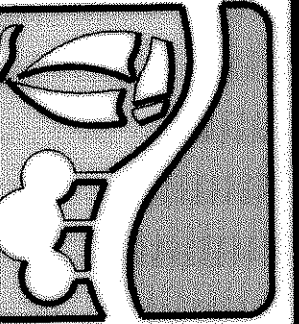
EXISTING UTILITIES AND UNDERGROUND FACILITIES INDICATED ON THESE PLANS HAVE BEEN LOCATED FROM REFERENCE INFORMATION SUPPLIED BY VARIOUS OWNERS OF THE FACILITIES. THE ENGINEER DOES NOT ACCEPT THE RESPONSIBILITY FOR THE UTILITY LOCATIONS SHOWN. IT SHALL BE THE RESPONSIBILITY OF THE CONTRACTOR TO VERIFY BOTH HORIZONTALLY AND VERTICALLY THE LOCATION OF ALL EXISTING UTILITIES AND UNDERGROUND FACILITIES PRIOR TO CONSTRUCTION, TO TAKE NECESSARY PRECAUTIONS IN ORDER TO PROTECT ALL FACILITIES ENCOUNTERED, AND TO NOTIFY THE ENGINEER PROMPTLY OF ALL CONFLICTS OF THE WORK WITH EXISTING FACILITIES. THE CONTRACTOR SHALL PRESERVE AND PROTECT ALL EXISTING UTILITIES FROM DAMAGE DURING CONSTRUCTION. ANY DAMAGE BY THE CONTRACTOR TO EXISTING UTILITIES SHALL BE REPAIRED BY THE CONTRACTOR AT HIS EXPENSE. CONTACT ALL POSSIBLE UTILITY AND UNDERGROUND FACILITY OWNERS.

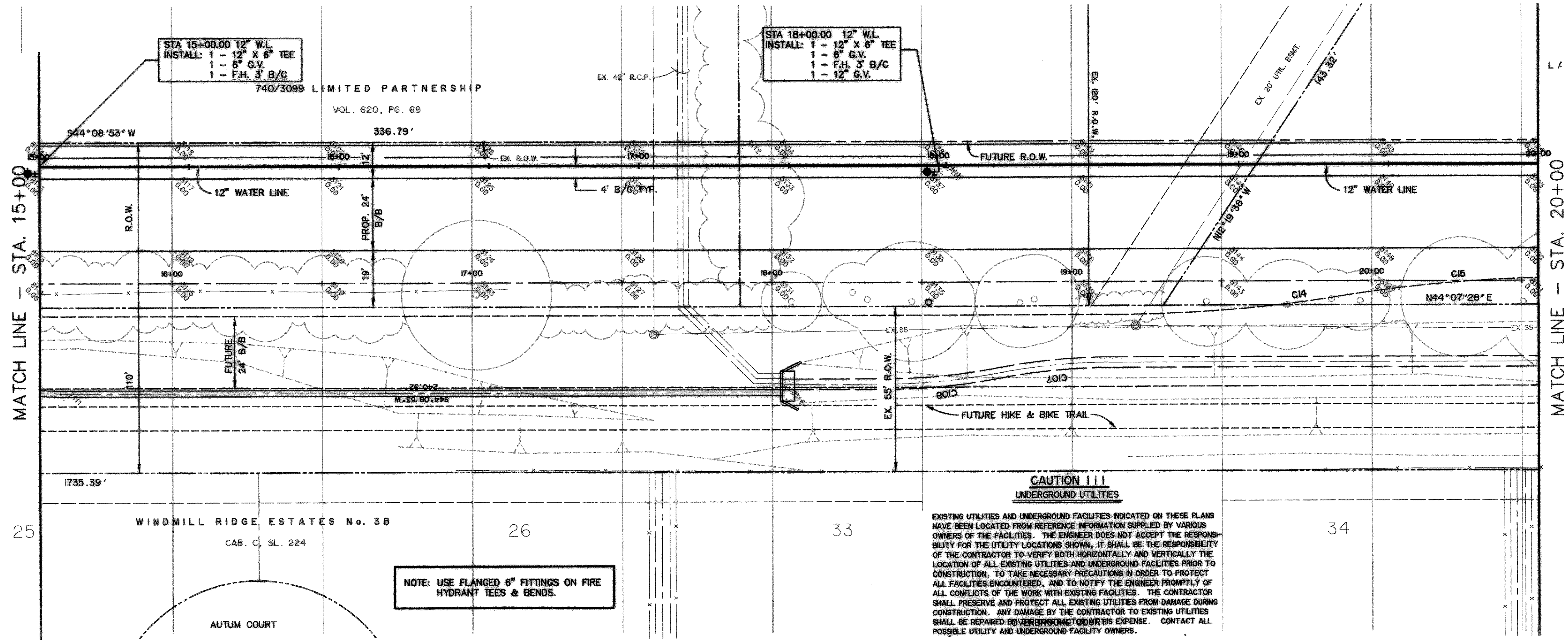
12" WATER LINE



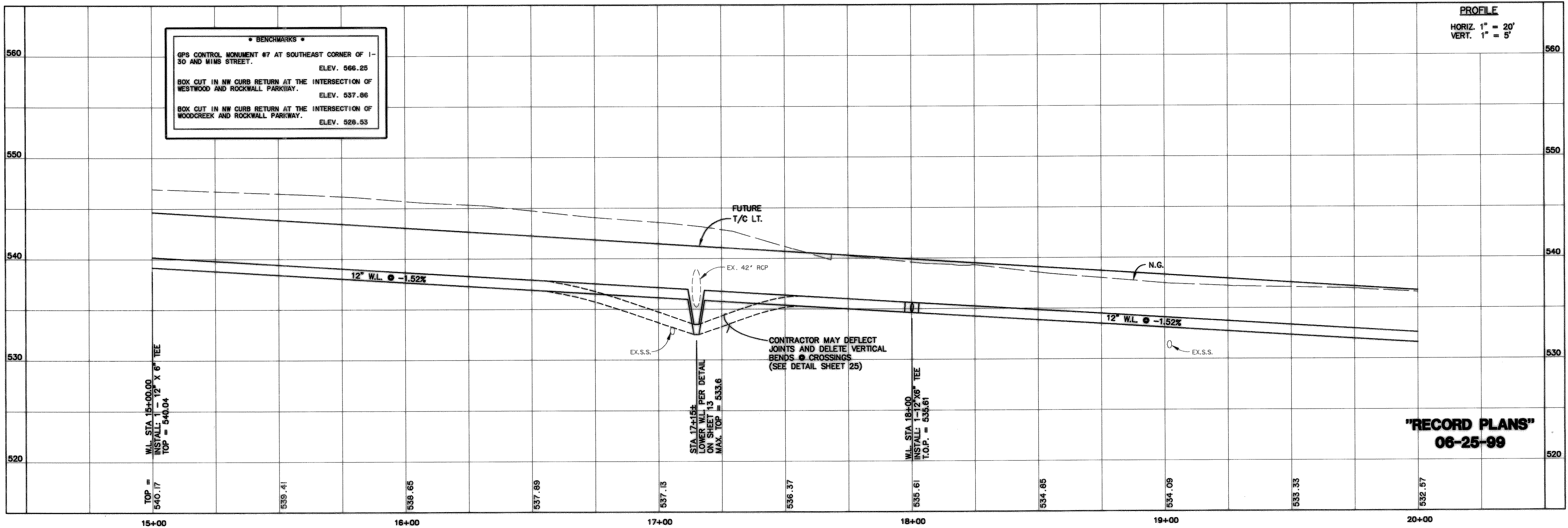
BENCHMARKS
 GPS CONTROL MONUMENT #7 AT SOUTHEAST CORNER OF I-30 AND MIMS STREET. ELEV. 566.25
 BOX CUT IN NW CURB RETURN AT THE INTERSECTION OF WESTWOOD AND ROCKWALL PARKWAY. ELEV. 537.86
 BOX CUT IN NW CURB RETURN AT THE INTERSECTION OF WOODCREEK AND ROCKWALL PARKWAY. ELEV. 528.53

"RECORD PLANS"
 06-25-99





12" WATER LINE



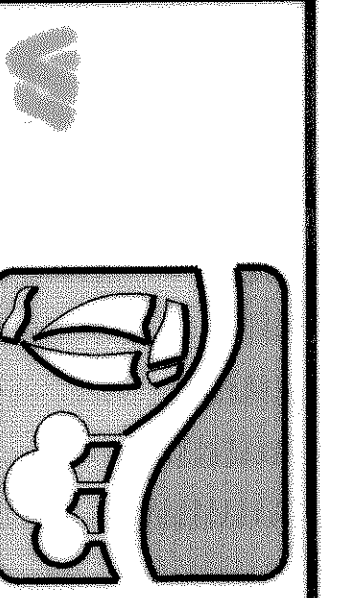
BENCHMARKS

- GPS CONTROL MONUMENT #7 AT SOUTHEAST CORNER OF I-30 AND WIMS STREET. ELEV. 566.25
- BOX CUT IN NW CURB RETURN AT THE INTERSECTION OF WESTWOOD AND ROCKWALL PARKWAY. ELEV. 537.86
- BOX CUT IN NW CURB RETURN AT THE INTERSECTION OF WOODCREEK AND ROCKWALL PARKWAY. ELEV. 528.53

CONTRACTOR MAY DEFLECT JOINTS AND DELETE VERTICAL BENDS & CROSSINGS (SEE DETAIL SHEET 25)

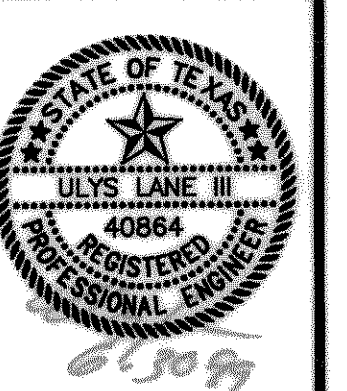
"RECORD PLANS"
06-25-99

PREPARED BY:
WIER & ASSOCIATES, INC.
ENGINEERS SURVEYORS LAND PLANNERS
4300 BELLEVUE PLACE SUITE 130 ARLINGTON, TEXAS 76018 METRO (817)467-7700
4108 AMAN CARTER ROAD, SUITE 200 FORT WORTH, TEXAS 76155 METRO (817)355-9437



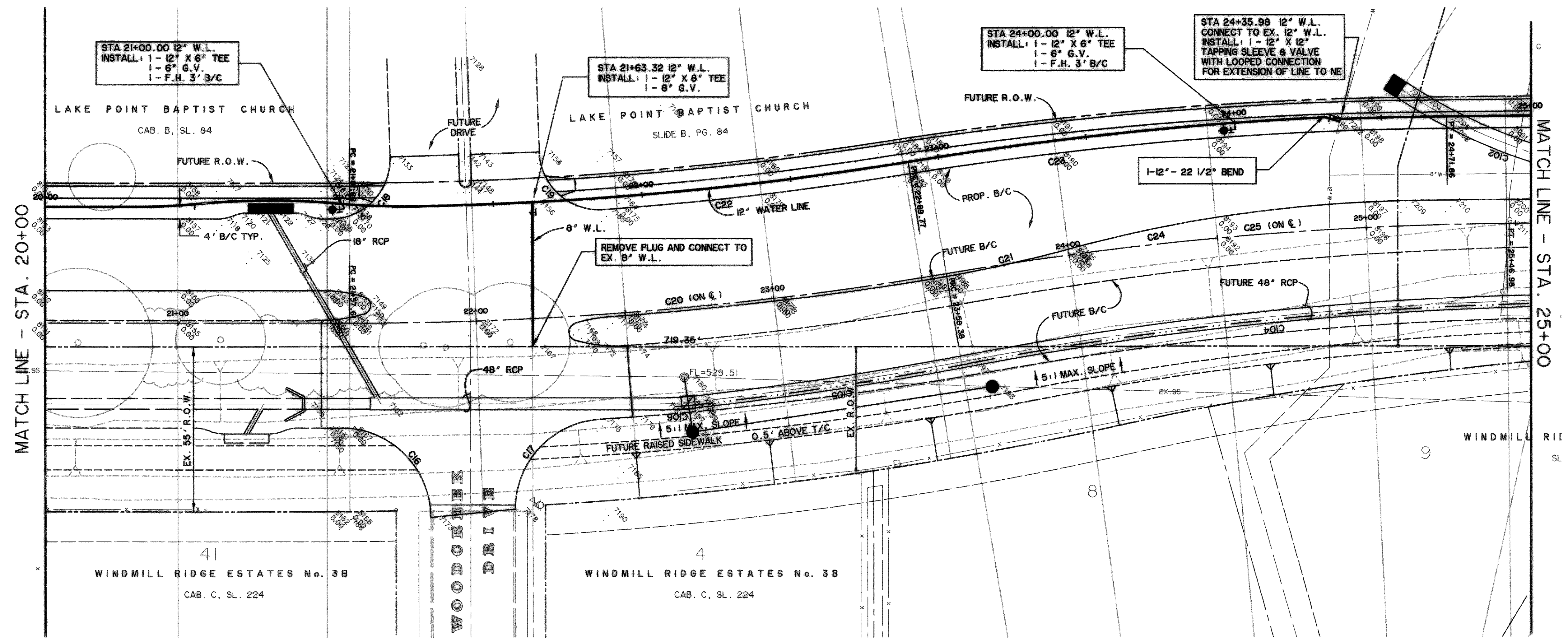
RALPH HALL PARKWAY
CITY OF ROCKWALL
ROCKWALL COUNTY, TEXAS

12" WATER LINE
PLAN & PROFILE
STA 15+00 TO STA 20+00



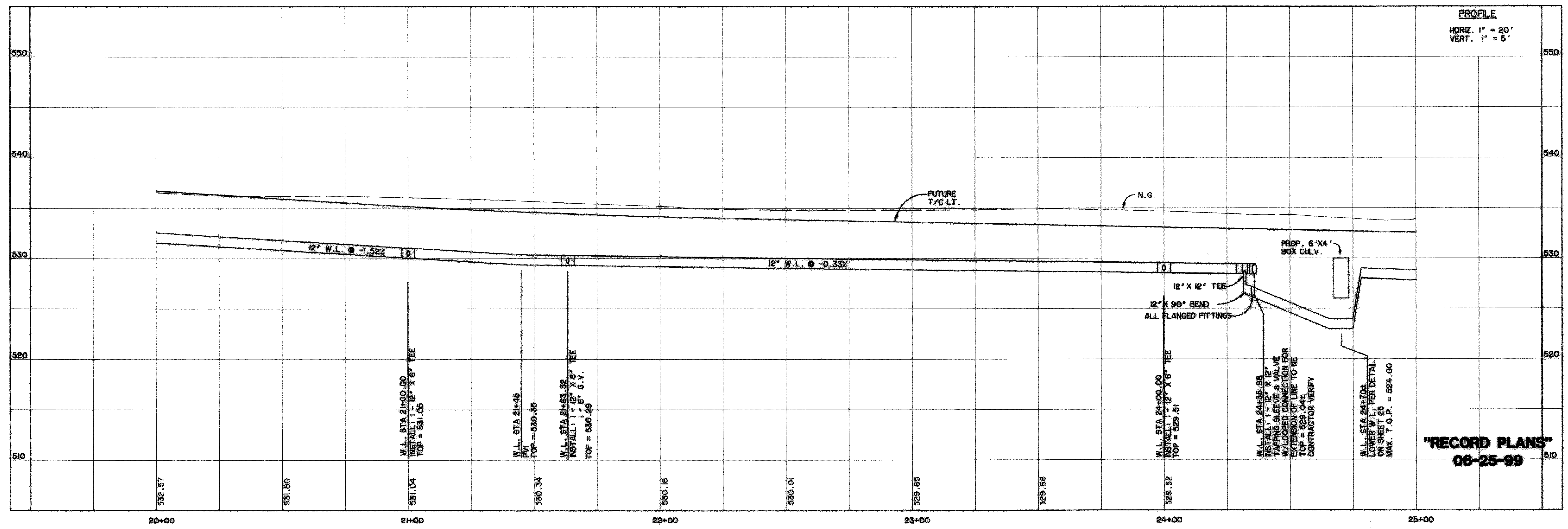
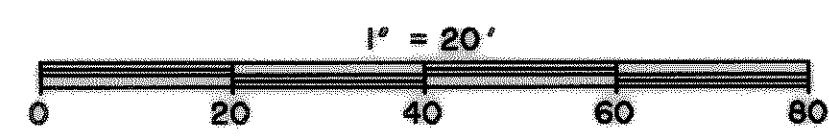
COPYRIGHT © WIER & ASSOCIATES, INC.
LAST SHEET EDIT DATED 06-25-99
WAS 97057
SHEET NO. 28

TIME 8:29 FILE: WATER4



NOTE: USE FLANGED 6" FITTINGS ON FIRE HYDRANT TEES & BENDS.

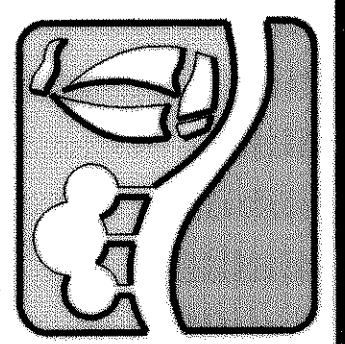
12" WATER LINE



"RECORD PLANS"
06-25-99

TIME: 8:32 FILE: WATERS

PREPARED BY:
WIER & ASSOCIATES, INC.
ENGINEERS SURVEYORS LAND PLANNERS
4300 BELWAY PLACE SUITE 130 ARLINGTON, TEXAS 76018 METRO (817)467-7700
4108 AMON CENTER BLVD. SUITE 200 FORT WORTH, TEXAS 76155 (817)355-9477

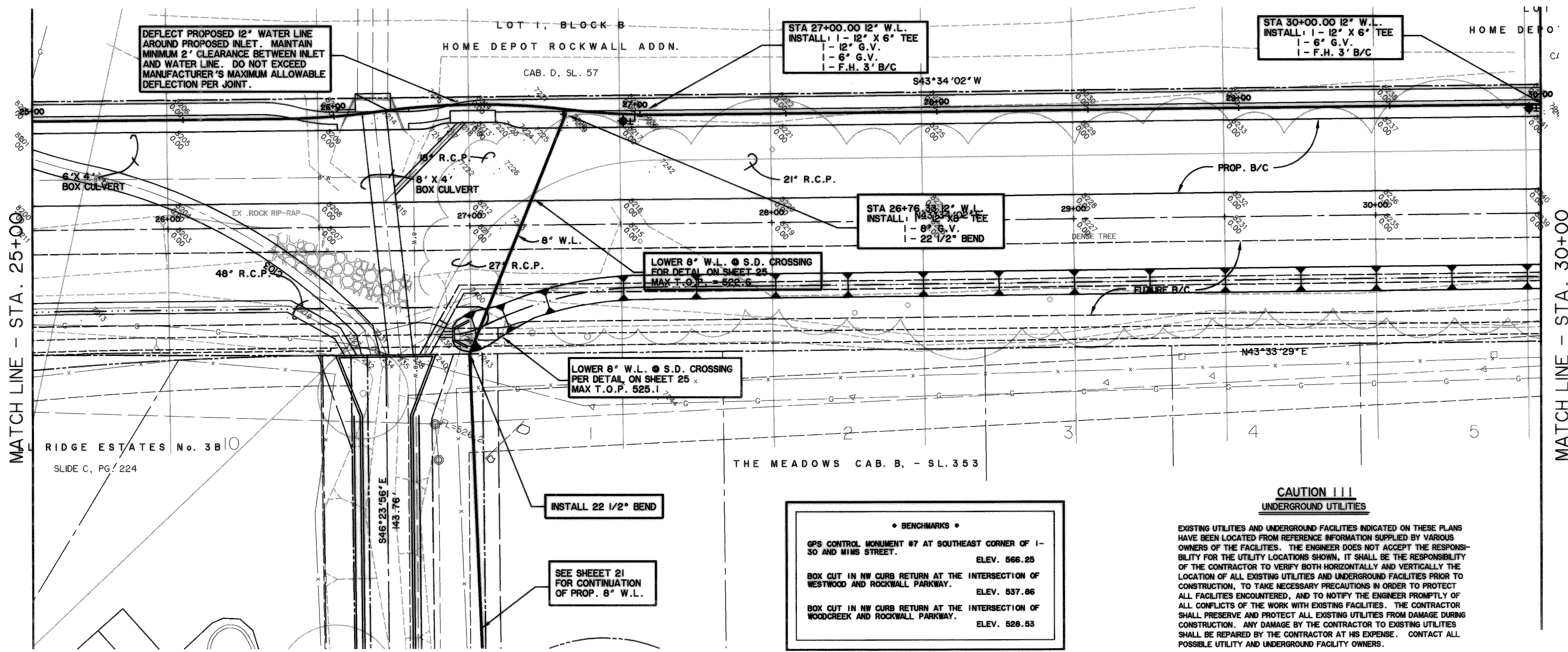


RALPH HALL PARKWAY
CITY OF ROCKWALL
ROCKWALL COUNTY, TEXAS

12" WATER LINE
PLAN & PROFILE
STA 20+00 TO 25+00



COPYRIGHT ©
WIER & ASSOCIATES, INC.
LAST SHEET EDIT
DATE: 06-18-99
WAR 37057
SHEET NO.
29



NOTE: USE FLANGED 6" FITTINGS ON FIRE HYDRANT TEES & BENDS.

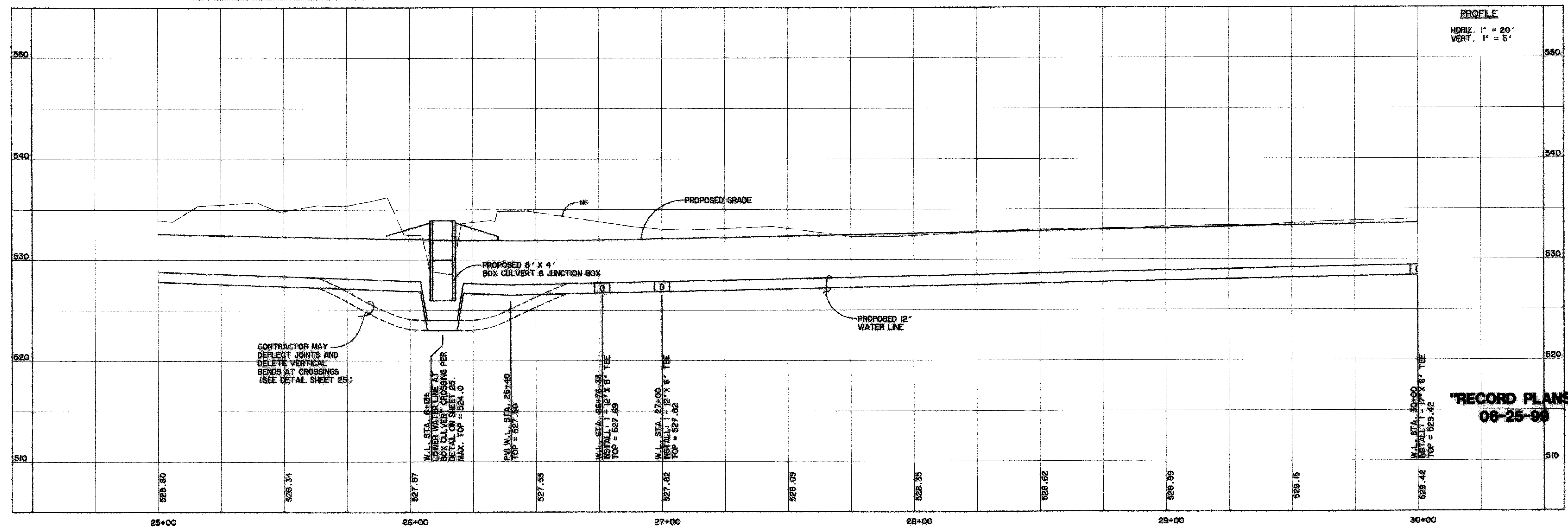
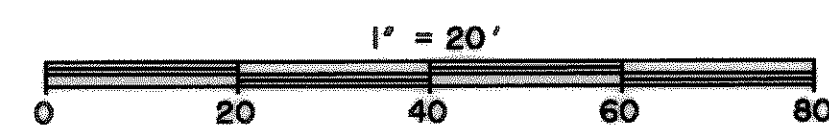
12" WATER LINE

BENCHMARKS

- GPS CONTROL MONUMENT #7 AT SOUTHEAST CORNER OF I-30 AND WIMS STREET. ELEV. 566.25
- BOX CUT IN NW CURB RETURN AT THE INTERSECTION OF WESTWOOD AND ROCKWALL PARKWAY. ELEV. 537.86
- BOX CUT IN NW CURB RETURN AT THE INTERSECTION OF WOODCREEK AND ROCKWALL PARKWAY. ELEV. 528.53

CAUTION !!!
UNDERGROUND UTILITIES

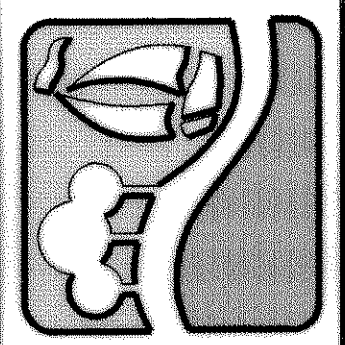
EXISTING UTILITIES AND UNDERGROUND FACILITIES INDICATED ON THESE PLANS HAVE BEEN LOCATED FROM REFERENCE INFORMATION SUPPLIED BY VARIOUS OWNERS OF THE FACILITIES. THE ENGINEER DOES NOT ACCEPT THE RESPONSIBILITY FOR THE UTILITY LOCATIONS SHOWN, IT SHALL BE THE RESPONSIBILITY OF THE CONTRACTOR TO VERIFY BOTH HORIZONTALLY AND VERTICALLY THE LOCATION OF ALL EXISTING UTILITIES AND UNDERGROUND FACILITIES PRIOR TO CONSTRUCTION, TO TAKE NECESSARY PRECAUTIONS IN ORDER TO PROTECT ALL FACILITIES ENCOUNTERED, AND TO NOTIFY THE ENGINEER PROMPTLY OF ALL CONFLICTS OF THE WORK WITH EXISTING FACILITIES. THE CONTRACTOR SHALL PRESERVE AND PROTECT ALL EXISTING UTILITIES FROM DAMAGE DURING CONSTRUCTION. ANY DAMAGE BY THE CONTRACTOR TO EXISTING UTILITIES SHALL BE REPAIRED BY THE CONTRACTOR AT HIS EXPENSE. CONTACT ALL POSSIBLE UTILITY AND UNDERGROUND FACILITY OWNERS.



CONTRACTOR MAY DEFLECT JOINTS AND DELETE VERTICAL BENDS AT CROSSINGS (SEE DETAIL SHEET 25)

"RECORD PLANS"
06-25-99

PREPARED BY:
WIA WIER & ASSOCIATES, INC.
ENGINEERS SURVEYORS LAND PLANNERS
4300 BELTWAY PLACE SUITE 130 ARLINGTON, TEXAS 76018 METRO (817)467-7700
4108 AMON CENTER BLD. SUITE 200 FORT WORTH, TEXAS 76105 METRO (817)355-9477



RALPH HALL PARKWAY
CITY OF ROCKWALL
ROCKWALL COUNTY, TEXAS

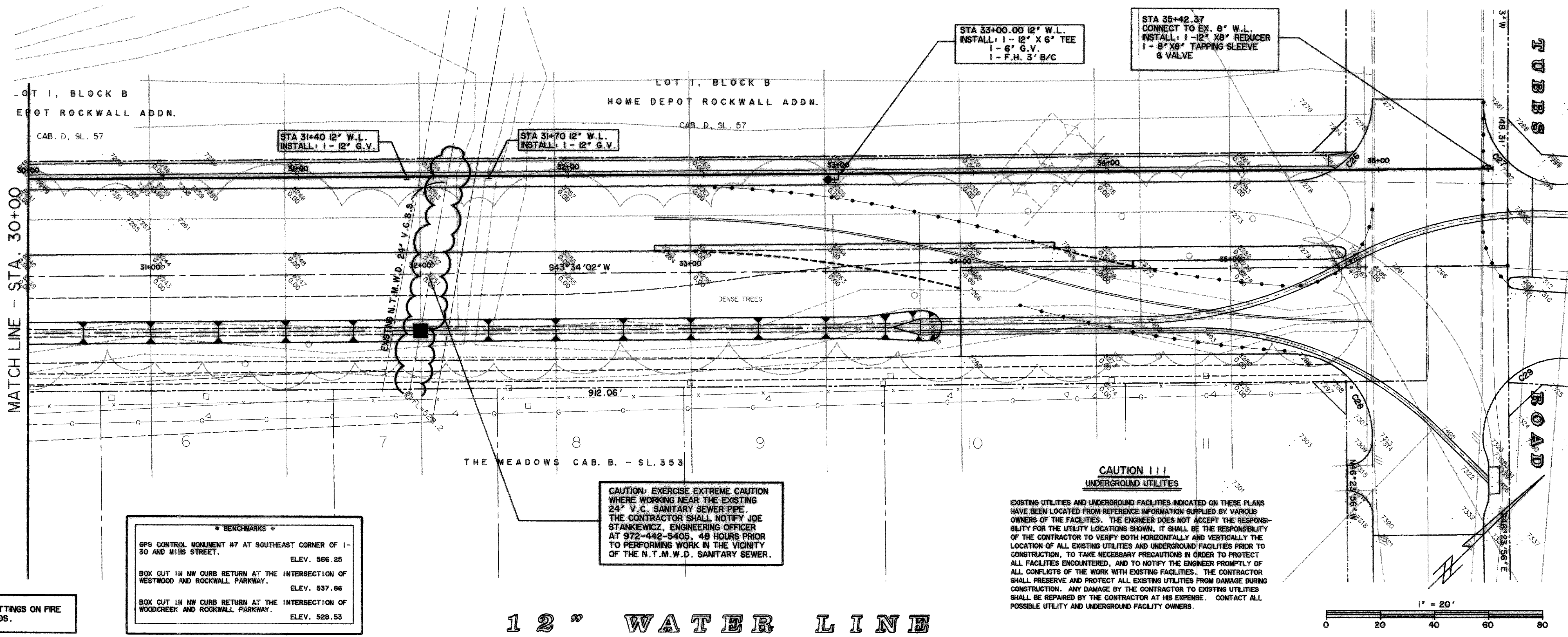
12" WATER LINE
PLAN & PROFILE
STA 25+00 TO 30+00



COPYRIGHT ©
WIER & ASSOCIATES, INC.
LAST SHEET EDIT
DATED 06-23-99
WIA 9705

SHEET NO.
30

TIME 19.20 FILE: C:\97057\WATERS



*** BENCHMARKS ***

GPS CONTROL MONUMENT #7 AT SOUTHEAST CORNER OF I-30 AND MIHS STREET. ELEV. 566.25

BOX CUT IN NW CURB RETURN AT THE INTERSECTION OF WESTWOOD AND ROCKWALL PARKWAY. ELEV. 537.86

BOX CUT IN NW CURB RETURN AT THE INTERSECTION OF WOODCREEK AND ROCKWALL PARKWAY. ELEV. 528.53

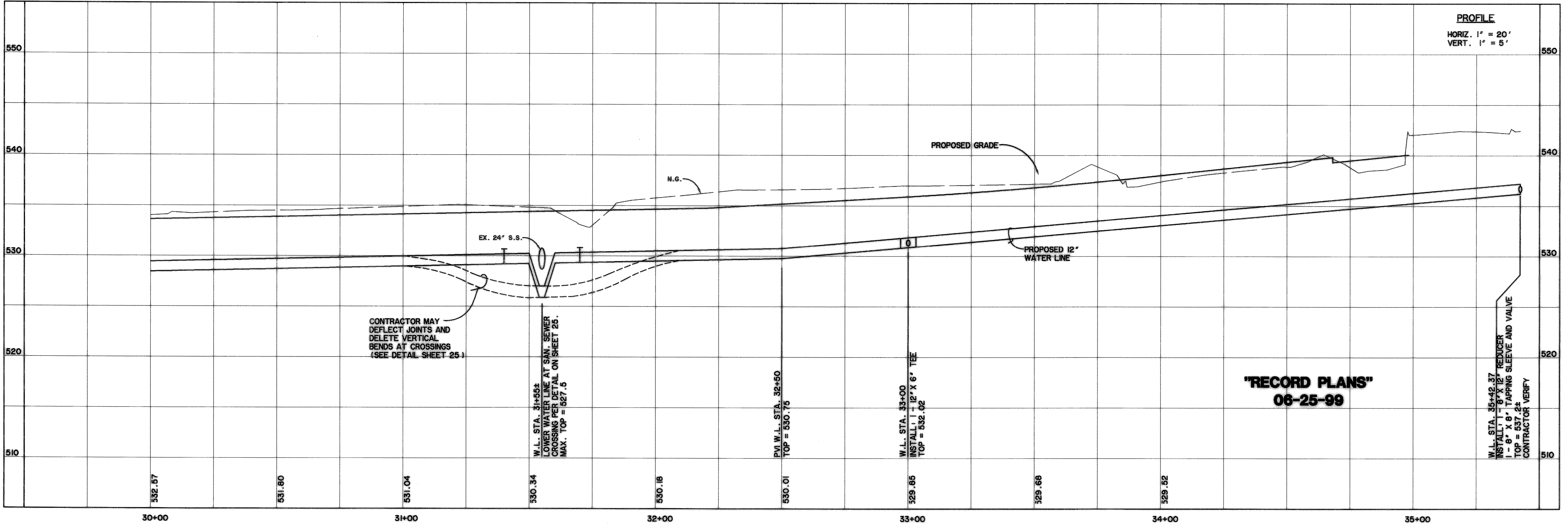
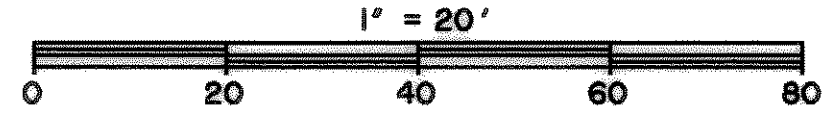
CAUTION: EXERCISE EXTREME CAUTION WHERE WORKING NEAR THE EXISTING 24\"/>

CAUTION !!! UNDERGROUND UTILITIES

EXISTING UTILITIES AND UNDERGROUND FACILITIES INDICATED ON THESE PLANS HAVE BEEN LOCATED FROM REFERENCE INFORMATION SUPPLIED BY VARIOUS OWNERS OF THE FACILITIES. THE ENGINEER DOES NOT ACCEPT THE RESPONSIBILITY FOR THE UTILITY LOCATIONS SHOWN. IT SHALL BE THE RESPONSIBILITY OF THE CONTRACTOR TO VERIFY BOTH HORIZONTALLY AND VERTICALLY THE LOCATION OF ALL EXISTING UTILITIES AND UNDERGROUND FACILITIES PRIOR TO CONSTRUCTION. TO TAKE NECESSARY PRECAUTIONS IN ORDER TO PROTECT ALL FACILITIES ENCOUNTERED, AND TO NOTIFY THE ENGINEER PROMPTLY OF ALL CONFLICTS OF THE WORK WITH EXISTING FACILITIES. THE CONTRACTOR SHALL PRESERVE AND PROTECT ALL EXISTING UTILITIES FROM DAMAGE DURING CONSTRUCTION. ANY DAMAGE BY THE CONTRACTOR TO EXISTING UTILITIES SHALL BE REPAIRED BY THE CONTRACTOR AT HIS EXPENSE. CONTACT ALL POSSIBLE UTILITY AND UNDERGROUND FACILITY OWNERS.

NOTE: USE FLANGED 6\"/>

12\"/>



"RECORD PLANS" 06-25-99

CONTRACTOR MAY DEFLECT JOINTS AND DELETE VERTICAL BENDS AT CROSSINGS (SEE DETAIL SHEET 25)

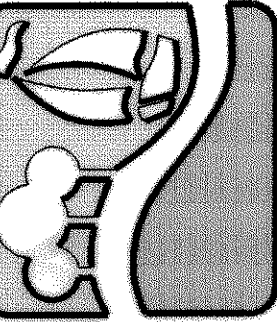
W.L. STA. 31+58± LOWER WATER LINE AT SAN. SEWER CROSSING PER DETAIL ON SHEET 25. MAX. TOP = 527.5

P.V. W.L. STA. 32+60 TOP = 530.75

W.L. STA. 33+00 INSTALL 1-12\"/>

W.L. STA. 35+42.37 INSTALL 1-8\"/>

PREPARED BY:
VIA WIER & ASSOCIATES, INC.
 ENGINEERS SURVEYORS LAND PLANNERS
 4300 BELWAY PLACE SUITE 130 ARLINGTON, TEXAS 76018 METRO (817)467-7700
 4108 AMAR CANTER BLDG. SUITE 200 FORT WORTH, TEXAS 76155 METRO (817)355-4437



**RALPH HALL PARKWAY
 CITY OF ROCKWALL
 ROCKWALL COUNTY, TEXAS**

**12\"/>
 PLAN & PROFILE
 STA 30+00 TO END**



COPYRIGHT ©
 WIER & ASSOCIATES, INC.
 LAST SHEET EDIT
 DATED 06-29-99
 WA# 97057

SHEET NO. 31