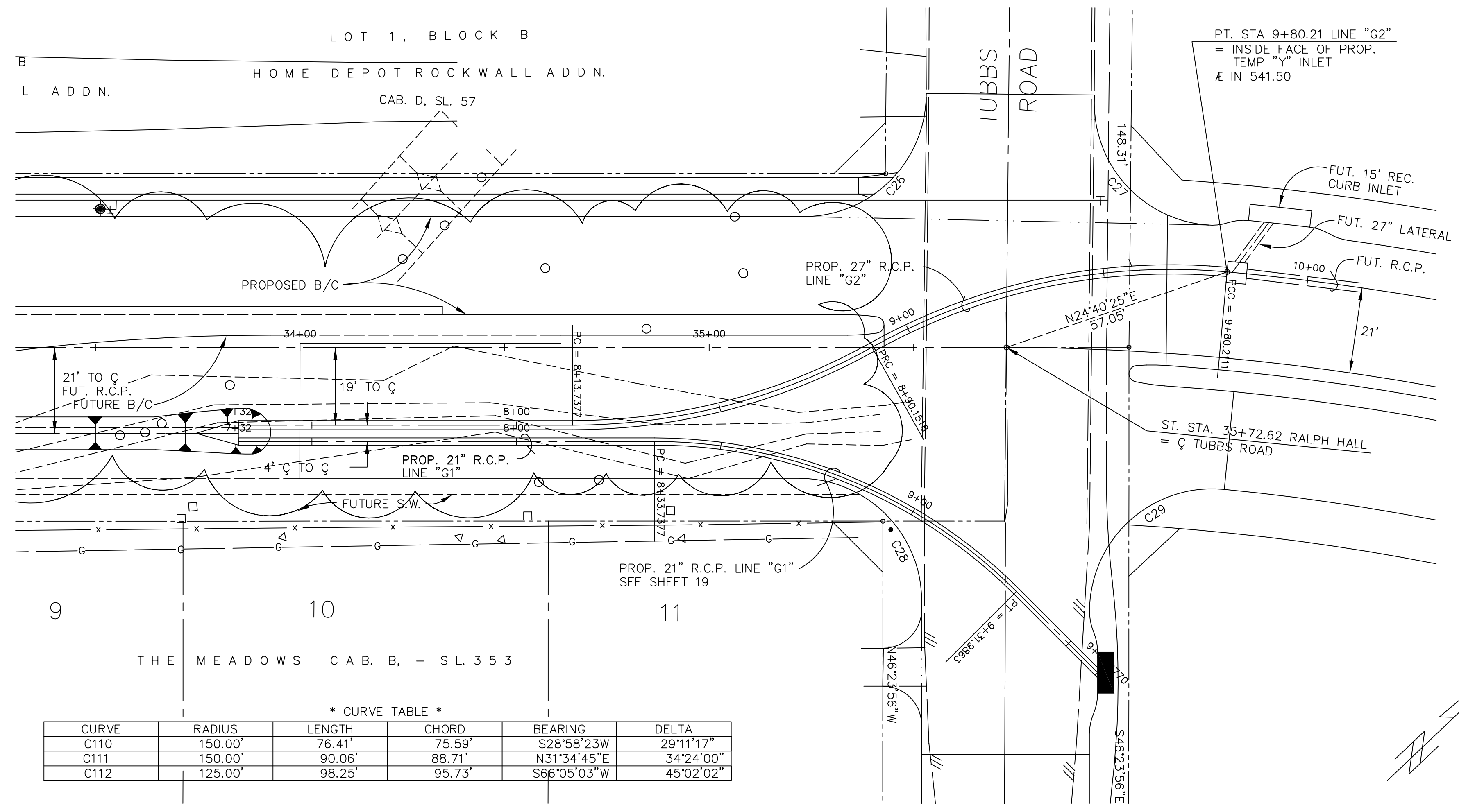


CAUTION !!!
UNDERGROUND UTILITIES

EXISTING UTILITIES AND UNDERGROUND FACILITIES INDICATED ON THESE PLANS HAVE BEEN LOCATED FROM REFERENCE INFORMATION SUPPLIED BY VARIOUS OWNERS OF THE FACILITIES. THE ENGINEER DOES NOT ACCEPT THE RESPONSIBILITY FOR THE UTILITY LOCATIONS SHOWN, IT SHALL BE THE RESPONSIBILITY OF THE CONTRACTOR TO VERIFY BOTH HORIZONTALLY AND VERTICALLY THE LOCATION OF ALL EXISTING UTILITIES AND UNDERGROUND FACILITIES PRIOR TO CONSTRUCTION, TO TAKE NECESSARY PRECAUTIONS IN ORDER TO PROTECT ALL FACILITIES ENCOUNTERED, AND TO NOTIFY THE ENGINEER PROMPTLY OF ALL CONFLICTS OF THE WORK WITH EXISTING FACILITIES. THE CONTRACTOR SHALL PRESERVE AND PROTECT ALL EXISTING UTILITIES FROM DAMAGE DURING CONSTRUCTION. ANY DAMAGE BY THE CONTRACTOR TO EXISTING UTILITIES SHALL BE REPAIRED BY THE CONTRACTOR AT HIS EXPENSE. CONTACT ALL POSSIBLE UTILITY AND UNDERGROUND FACILITY OWNERS.

* BENCHMARKS *	
GPS CONTROL MONUMENT #7 AT SOUTHEAST CORNER OF I-30 AND MIMS STREET.	ELEV. 566.25
BOX CUT IN NW CURB RETURN AT THE INTERSECTION OF WESTWOOD AND ROCKWALL PARKWAY.	ELEV. 537.86
BOX CUT IN NW CURB RETURN AT THE INTERSECTION OF WOODCREEK AND ROCKWALL PARKWAY.	ELEV. 528.53

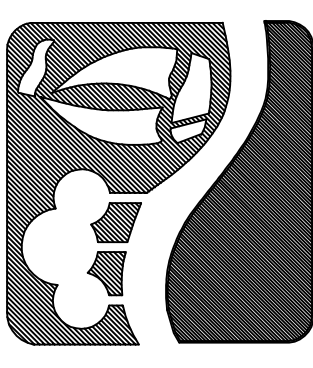
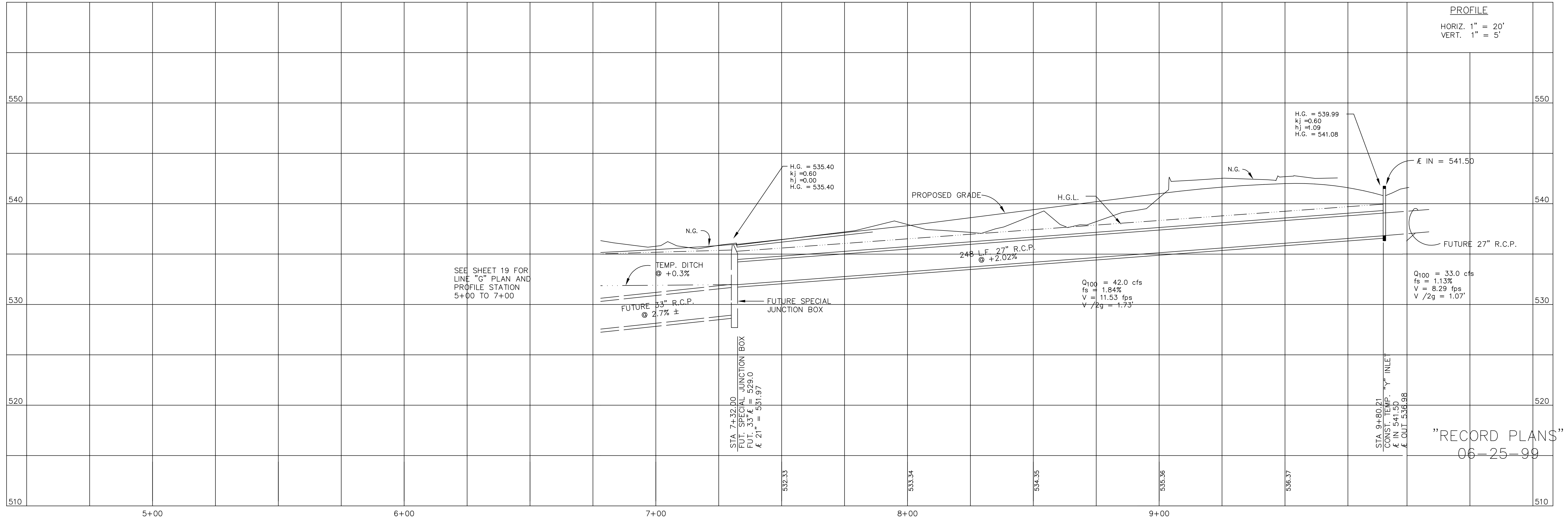
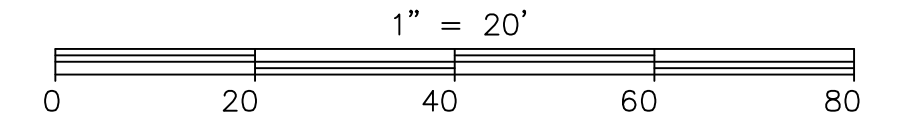
SEE SHEET 19 FOR LINE "G" PLAN AND PROFILE STATION 5+00 TO 7+00



* CURVE TABLE *

CURVE	RADIUS	LENGTH	CHORD	BEARING	DELTA
C110	150.00'	76.41'	75.59'	S28°58'23"W	29°11'17"
C111	150.00'	90.06'	88.71'	N31°34'45"E	34°24'00"
C112	125.00'	98.25'	95.73'	S66°05'03"W	45°02'02"

STORM DRAIN LINE "G2"



RALPH HALL PARKWAY
 CITY OF ROCKWALL
 ROCKWALL COUNTY, TEXAS
 STORM DRAIN LINE "G" PLAN & PROFILE
 STA. 5+00 TO STA. END