

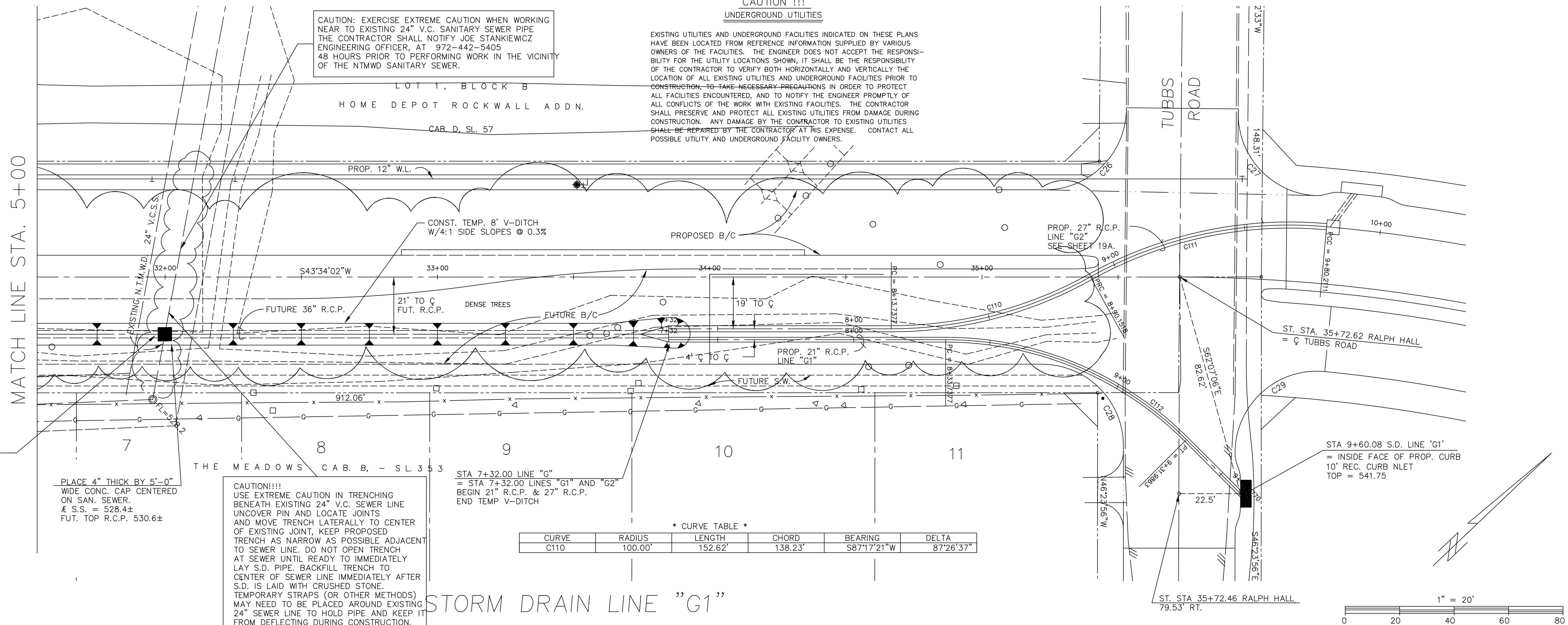
RALPH HALL PARKWAY
CITY OF ROCKWALL
ROCKWALL COUNTY, TEXAS

STORM DRAIN
LINE "G"
PLAN & PROFILE
STA. 5+00 TO STA. END

**CAUTION !!!
UNDERGROUND UTILITIES**

CAUTION: EXERCISE EXTREME CAUTION WHEN WORKING NEAR TO EXISTING 24" V.C. SANITARY SEWER PIPE. THE CONTRACTOR SHALL NOTIFY JOE STANKIEWICZ ENGINEERING OFFICER, AT 972-442-5405 48 HOURS PRIOR TO PERFORMING WORK IN THE VICINITY OF THE NTWD SANITARY SEWER.

EXISTING UTILITIES AND UNDERGROUND FACILITIES INDICATED ON THESE PLANS HAVE BEEN LOCATED FROM REFERENCE INFORMATION SUPPLIED BY VARIOUS OWNERS OF THE FACILITIES. THE ENGINEER DOES NOT ACCEPT THE RESPONSIBILITY FOR THE UTILITY LOCATIONS SHOWN, IT SHALL BE THE RESPONSIBILITY OF THE CONTRACTOR TO VERIFY BOTH HORIZONTALLY AND VERTICALLY THE LOCATION OF ALL EXISTING UTILITIES AND UNDERGROUND FACILITIES PRIOR TO CONSTRUCTION. TO TAKE NECESSARY PRECAUTIONS IN ORDER TO PROTECT ALL FACILITIES ENCOUNTERED, AND TO NOTIFY THE ENGINEER PROMPTLY OF ALL CONFLICTS OF THE WORK WITH EXISTING FACILITIES. THE CONTRACTOR SHALL PRESERVE AND PROTECT ALL EXISTING UTILITIES FROM DAMAGE DURING CONSTRUCTION. ANY DAMAGE BY THE CONTRACTOR TO EXISTING UTILITIES SHALL BE REPAIRED BY THE CONTRACTOR AT HIS EXPENSE. CONTACT ALL POSSIBLE UTILITY AND UNDERGROUND FACILITY OWNERS.



* CURVE TABLE *

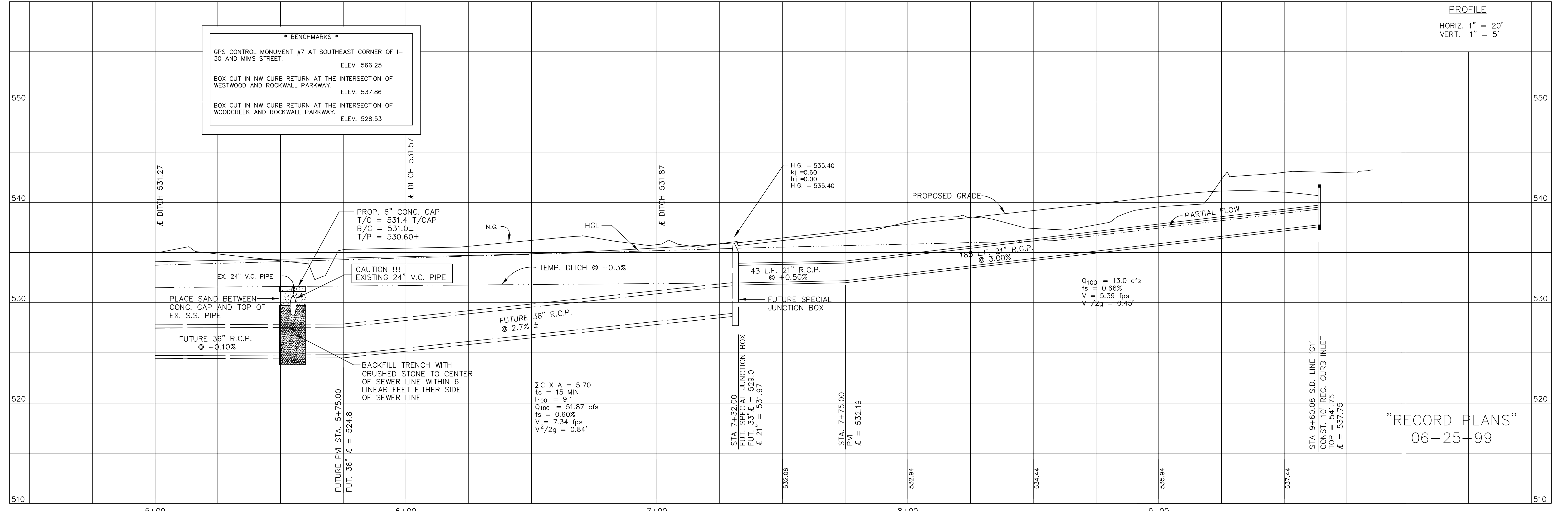
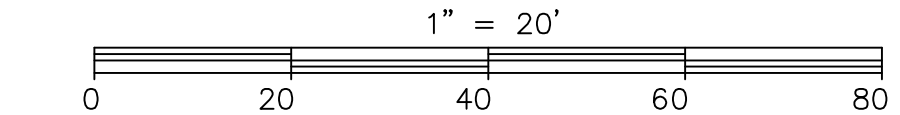
CURVE	RADIUS	LENGTH	CHORD	BEARING	DELTA
C110	100.00'	152.62'	138.23'	S87°17'21"W	87°26'37"

UNCOVER AND VERIFY TOP OF PIPE PRIOR TO CONSTRUCTION.

PLACE 4" THICK BY 5'-0" WIDE CONC. CAP CENTERED ON SAN. SEWER.
± S.S. = 528.4±
FUT. TOP R.C.P. 530.6±

CAUTION!!!!
USE EXTREME CAUTION IN TRENCHING BENEATH EXISTING 24" V.C. SEWER LINE UNCOVER PIN AND LOCATE JOINTS AND MOVE TRENCH LATERALLY TO CENTER OF EXISTING JOINT, KEEP PROPOSED TRENCH AS NARROW AS POSSIBLE ADJACENT TO SEWER LINE. DO NOT OPEN TRENCH AT SEWER UNTIL READY TO IMMEDIATELY LAY S.D. PIPE. BACKFILL TRENCH TO CENTER OF SEWER LINE IMMEDIATELY AFTER S.D. IS LAID WITH CRUSHED STONE. TEMPORARY STRAPS (OR OTHER METHODS) MAY NEED TO BE PLACED AROUND EXISTING 24" SEWER LINE TO HOLD PIPE AND KEEP IT FROM DEFLECTING DURING CONSTRUCTION.

STA 7+32.00 LINE "G"
= STA 7+32.00 LINES "G1" AND "G2"
BEGIN 21" R.C.P. & 27" R.C.P.
END TEMP V-DITCH



* BENCHMARKS *

GPS CONTROL MONUMENT #7 AT SOUTHEAST CORNER OF I-30 AND MIMS STREET. ELEV. 566.25

BOX CUT IN NW CURB RETURN AT THE INTERSECTION OF WESTWOOD AND ROCKWALL PARKWAY. ELEV. 537.86

BOX CUT IN NW CURB RETURN AT THE INTERSECTION OF WOODCREEK AND ROCKWALL PARKWAY. ELEV. 528.53

"RECORD PLANS"
06-25-99