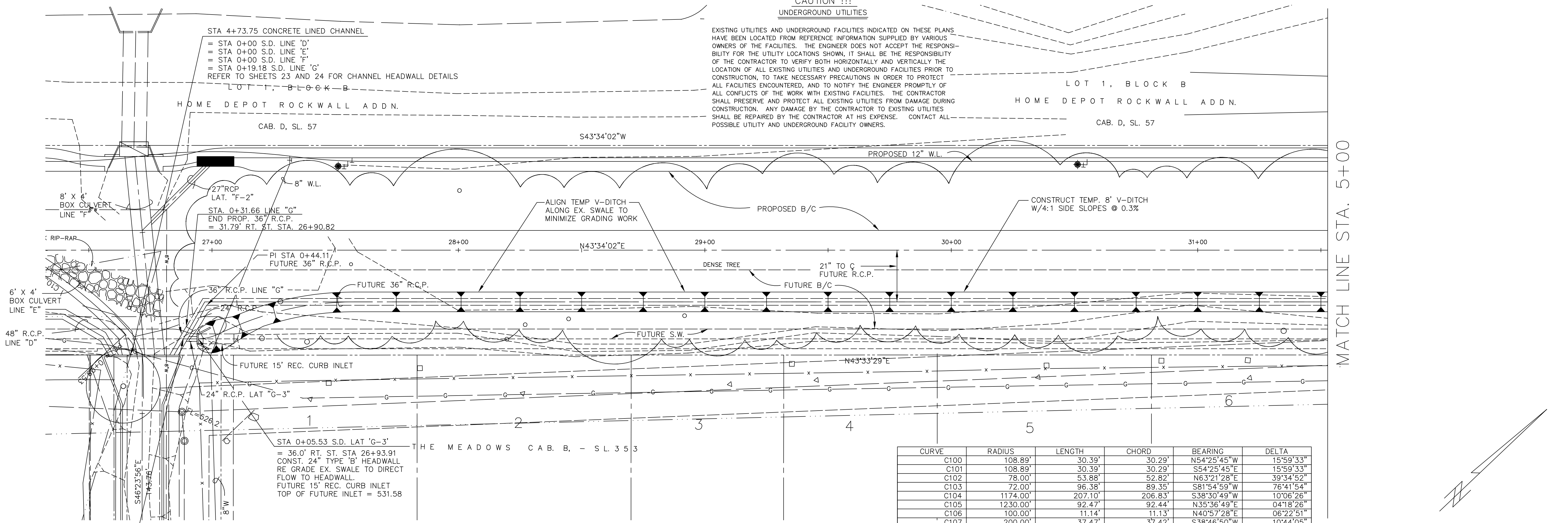


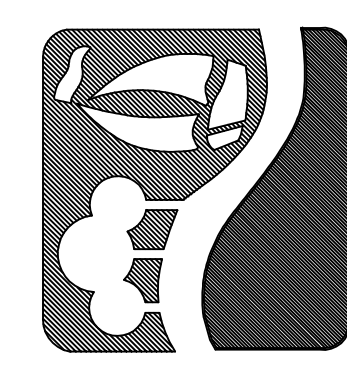
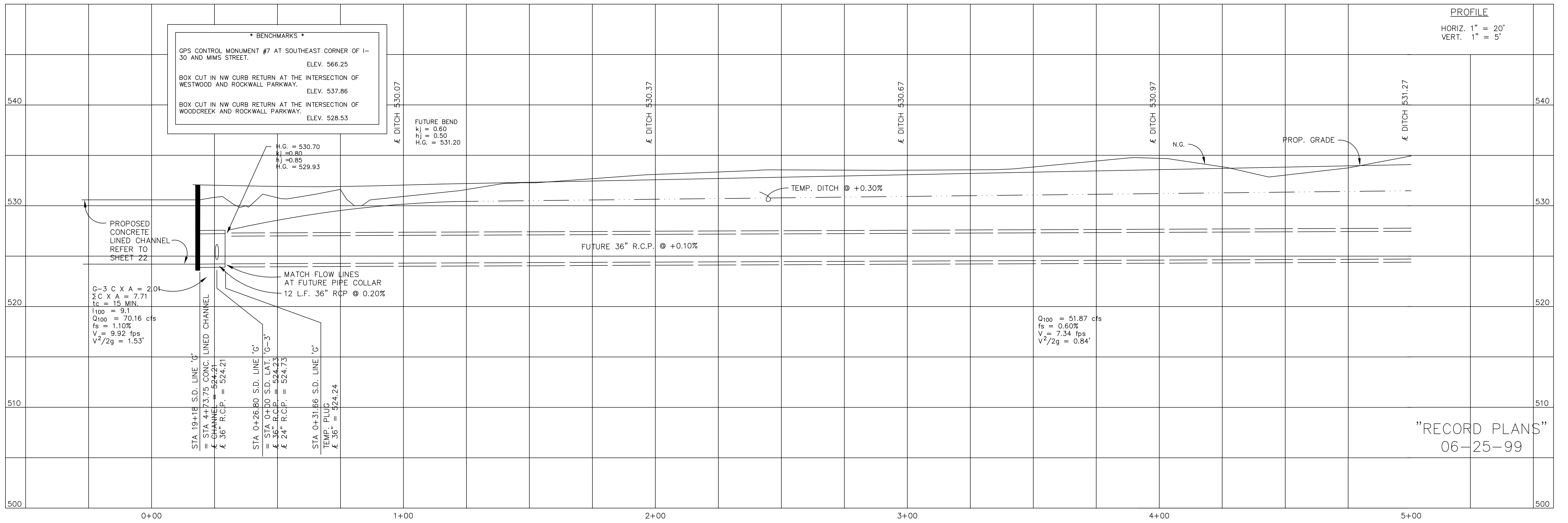
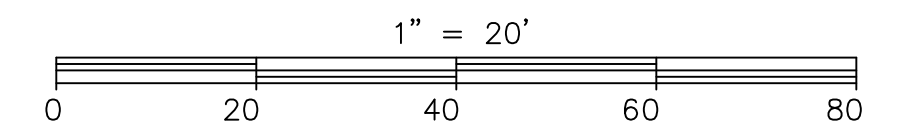
CAUTION !!!
UNDERGROUND UTILITIES

EXISTING UTILITIES AND UNDERGROUND FACILITIES INDICATED ON THESE PLANS HAVE BEEN LOCATED FROM REFERENCE INFORMATION SUPPLIED BY VARIOUS OWNERS OF THE FACILITIES. THE ENGINEER DOES NOT ACCEPT THE RESPONSIBILITY FOR THE UTILITY LOCATIONS SHOWN, IT SHALL BE THE RESPONSIBILITY OF THE CONTRACTOR TO VERIFY BOTH HORIZONTALLY AND VERTICALLY THE LOCATION OF ALL EXISTING UTILITIES AND UNDERGROUND FACILITIES PRIOR TO CONSTRUCTION, TO TAKE NECESSARY PRECAUTIONS IN ORDER TO PROTECT ALL FACILITIES ENCOUNTERED, AND TO NOTIFY THE ENGINEER PROMPTLY OF ALL CONFLICTS OF THE WORK WITH EXISTING FACILITIES. THE CONTRACTOR SHALL PRESERVE AND PROTECT ALL EXISTING UTILITIES FROM DAMAGE DURING CONSTRUCTION. ANY DAMAGE BY THE CONTRACTOR TO EXISTING UTILITIES SHALL BE REPAIRED BY THE CONTRACTOR AT HIS EXPENSE. CONTACT ALL POSSIBLE UTILITY AND UNDERGROUND FACILITY OWNERS.



CURVE	RADIUS	LENGTH	CHORD	BEARING	DELTA
C100	108.89'	30.39'	30.29'	N54°25'45"W	15°59'33"
C101	108.89'	30.39'	30.29'	S54°25'45"E	15°59'33"
C102	78.00'	53.88'	52.82'	N63°21'28"E	39°34'52"
C103	72.00'	96.38'	89.35'	S81°54'59"W	76°41'54"
C104	1174.00'	207.10'	206.83'	S38°30'49"W	10°06'26"
C105	1230.00'	92.47'	92.44'	N35°36'49"E	04°18'26"
C106	100.00'	11.14'	11.13'	N40°57'28"E	06°22'51"
C107	200.00'	37.47'	37.42'	S38°46'50"W	10°44'05"
C108	200.00'	37.47'	37.42'	N38°46'50"E	10°44'05"
C109	150.00'	131.19'	127.05'	N69°12'12"E	50°06'39"
C110	100.00'	152.62'	138.23'	S87°17'21"W	87°26'37"

STORM DRAIN LINE "G"



RALPH HALL PARKWAY
CITY OF ROCKWALL
ROCKWALL COUNTY, TEXAS

STORM DRAIN
LINE "G"
PLAN & PROFILE
STA. 0+00 TO STA. 5+00

"RECORD PLANS"
06-25-99