

**CAUTION !!!**  
UNDERGROUND UTILITIES

EXISTING UTILITIES AND UNDERGROUND FACILITIES INDICATED ON THESE PLANS HAVE BEEN LOCATED FROM REFERENCE INFORMATION SUPPLIED BY VARIOUS OWNERS OF THE FACILITIES. THE ENGINEER DOES NOT ACCEPT THE RESPONSIBILITY FOR THE UTILITY LOCATIONS SHOWN. IT SHALL BE THE RESPONSIBILITY OF THE CONTRACTOR TO VERIFY BOTH HORIZONTALLY AND VERTICALLY THE LOCATION OF ALL EXISTING UTILITIES AND UNDERGROUND FACILITIES PRIOR TO CONSTRUCTION, TO TAKE NECESSARY PRECAUTIONS IN ORDER TO PROTECT ALL FACILITIES ENCOUNTERED, AND TO NOTIFY THE ENGINEER PROMPTLY OF ALL CONFLICTS OF THE WORK WITH EXISTING FACILITIES. THE CONTRACTOR SHALL PRESERVE AND PROTECT ALL EXISTING UTILITIES FROM DAMAGE DURING CONSTRUCTION. ANY DAMAGE BY THE CONTRACTOR TO EXISTING UTILITIES SHALL BE REPAIRED BY THE CONTRACTOR AT HIS EXPENSE. CONTACT ALL POSSIBLE UTILITY AND UNDERGROUND FACILITY OWNERS.

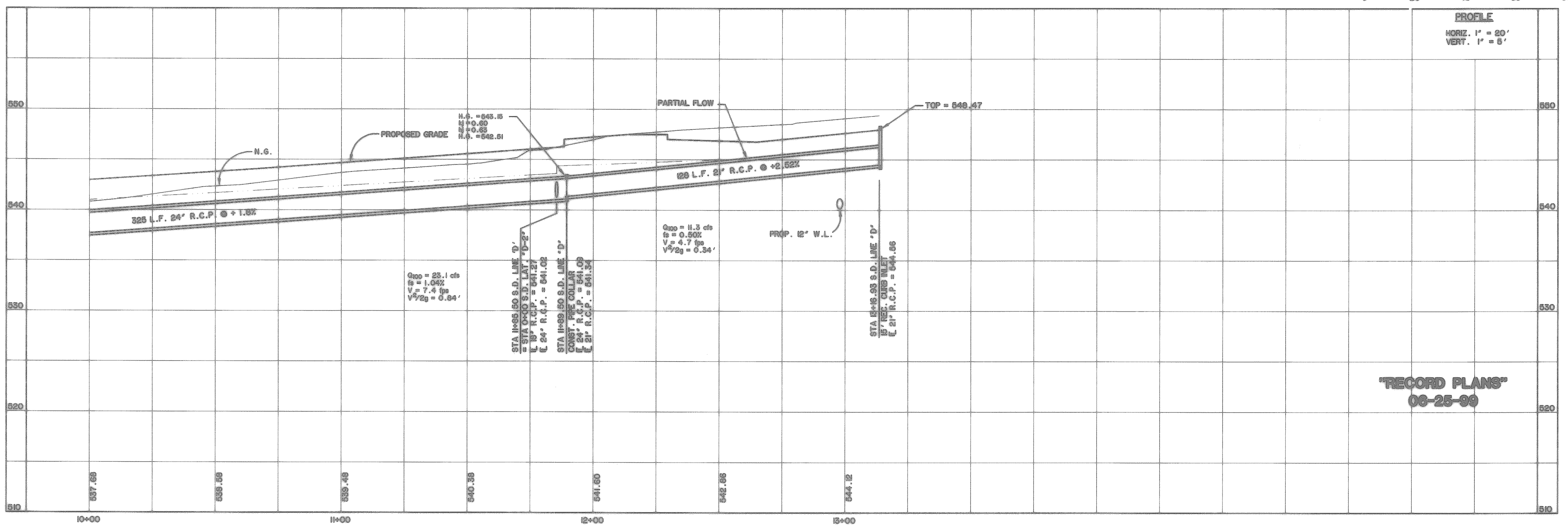
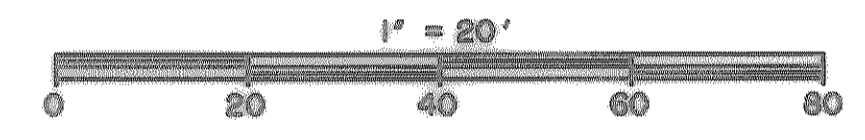
**BENCHMARKS**

GPS CONTROL MONUMENT #7 AT SOUTHEAST CORNER OF 1-50 AND 11185 STREET.	ELEV. 566.26
BOX CUT IN NW CURB RETURN AT THE INTERSECTION OF WESTWOOD AND ROCKWALL PARKWAY.	ELEV. 537.66
BOX CUT IN NW CURB RETURN AT THE INTERSECTION OF WOODCREEK AND ROCKWALL PARKWAY.	ELEV. 569.53

**CURVE TABLE**

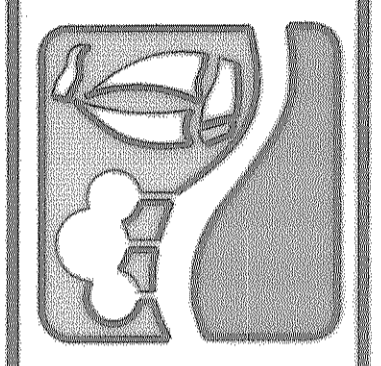
CURVE	RADIUS	LENGTH	CHORD	BEARING	DELTA
C109	150.00'	131.19'	127.05'	N69°12'12"E	50°06'39"

**STORM DRAIN LINE "D"**



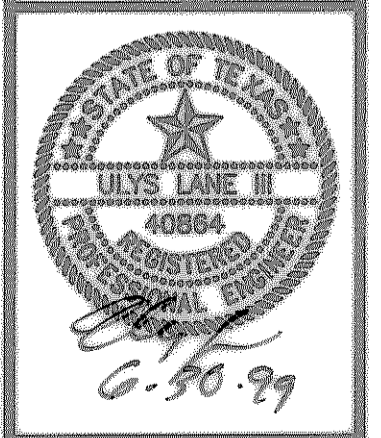
**"RECORD PLANS"**  
06-25-99

PREPARED BY:  
**VIA WIER & ASSOCIATES, INC.**  
ENGINEERS SURVEYORS LAND PLANNERS  
4300 BELLEVUE BLVD. SUITE 130 FORT WORTH, TEXAS 76104 (817) 467-7700  
410 AMON CENTER BLDG. SUITE 200 FORT WORTH, TEXAS 76104 (817) 355-9457



**RALPH HALL PARKWAY**  
**CITY OF ROCKWALL**  
**ROCKWALL COUNTY, TEXAS**

**STORM DRAIN**  
**LINE "D"**  
**PLAN & PROFILE**  
**STA. 10+00 TO END**



COPYRIGHT ©  
WIER & ASSOCIATES, INC.  
LAST SHEET EDIT  
DATE 06-14-99  
WAW 97057  
**SHEET NO.**  
16