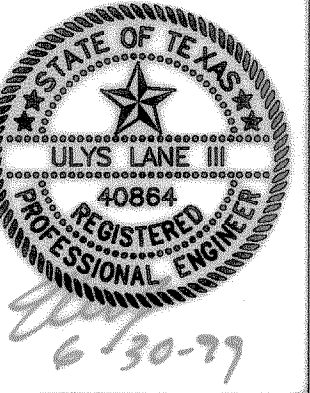
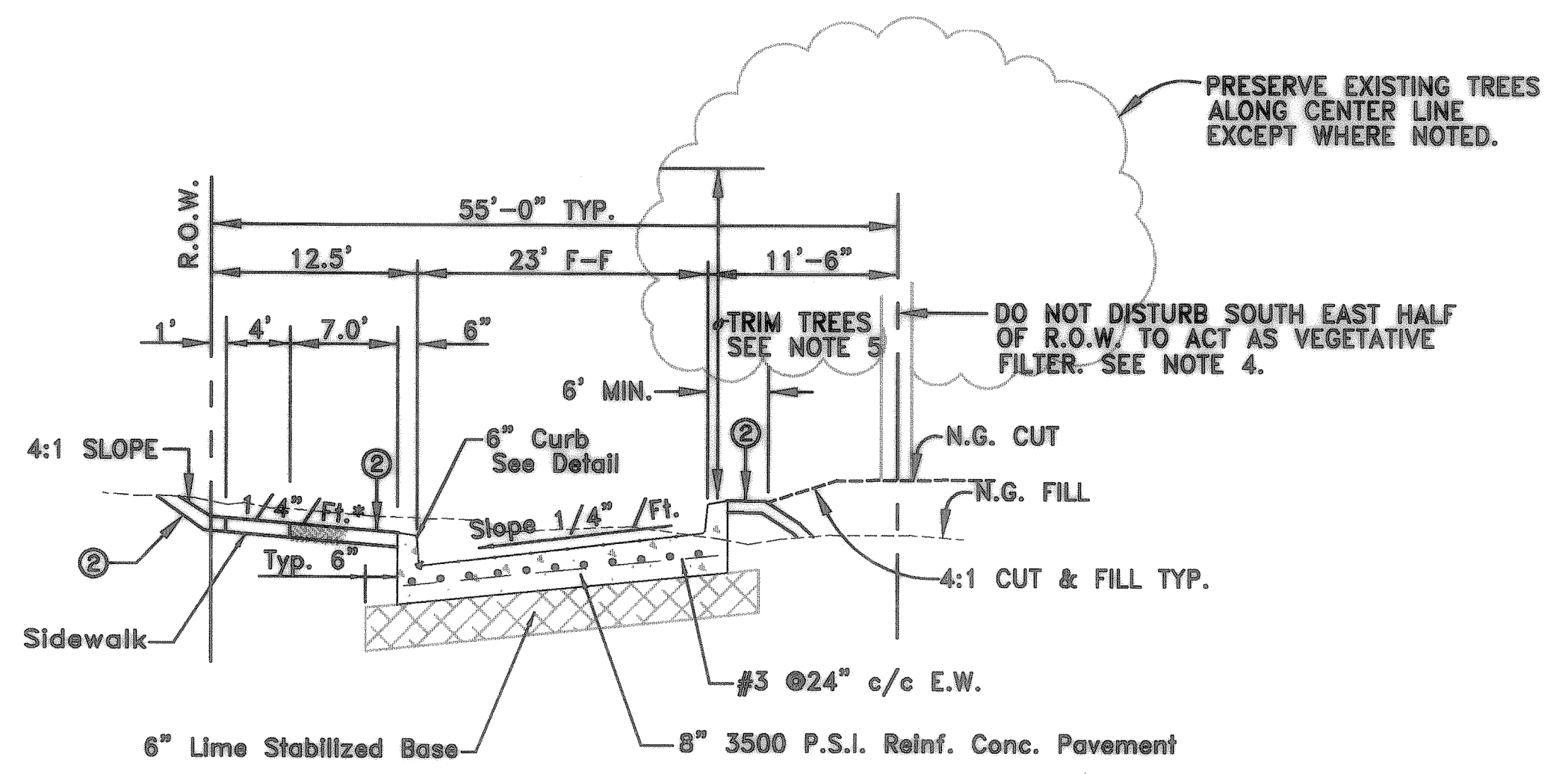


RALPH HALL PARKWAY
 FROM
 HORIZON RD. TO TUBBS RD
 CITY OF ROCKWALL, TX

TYPICAL SECTIONS
 & GENERAL NOTES

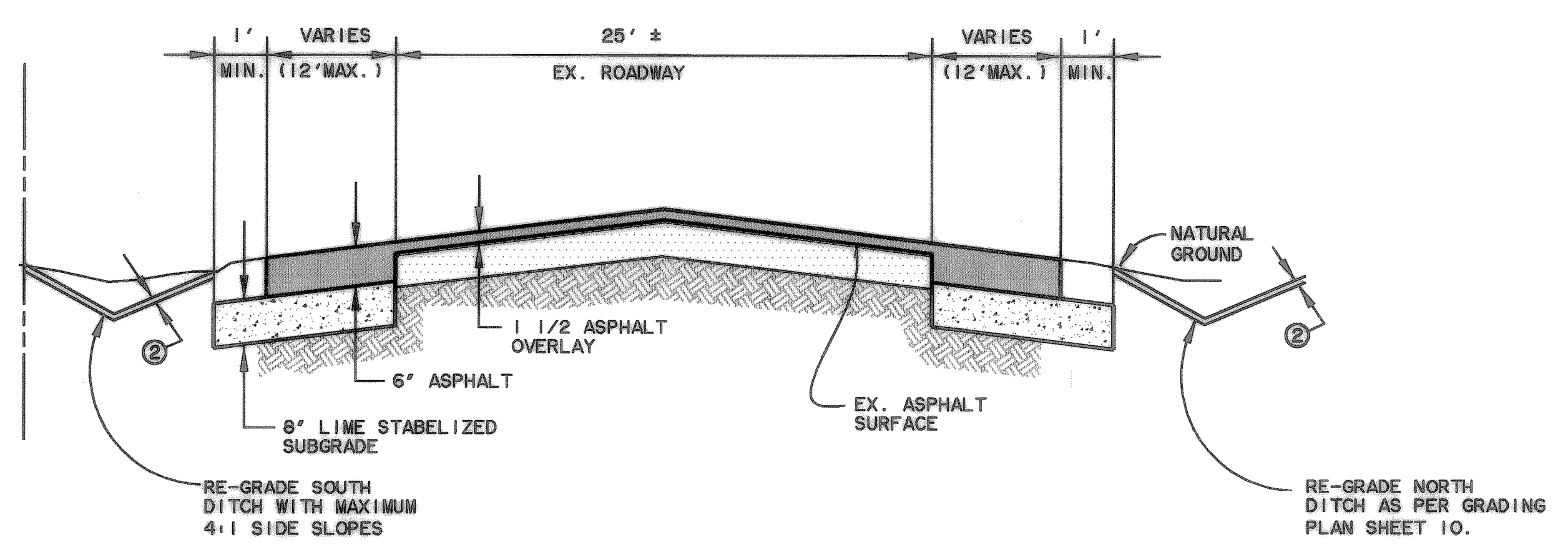


COPYRIGHT ©
 WIER & ASSOCIATES, INC.
 LAST SHEET EDIT
 DATE 06-25-99
 WA# 97057
SHEET NO.
 2

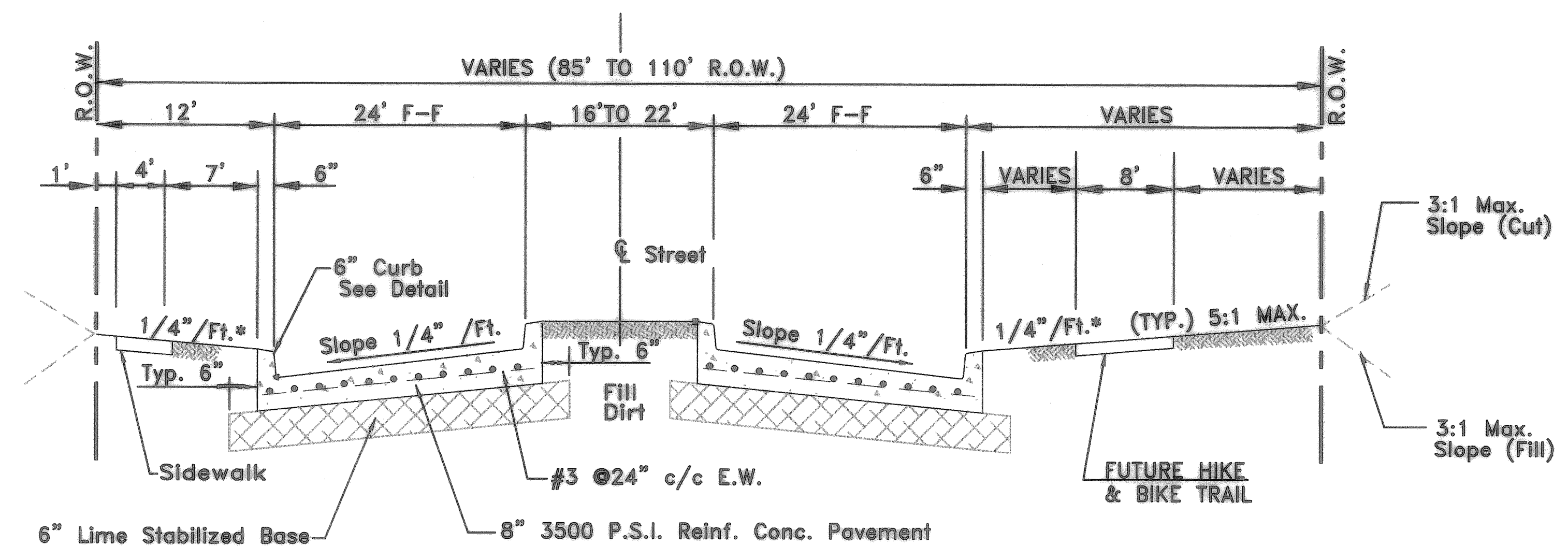


TYPICAL SECTION - RALPH HALL PARKWAY (THIS PHASE)
 N.T.S.

- NOTES**
1. CONSTRUCT PAVEMENT IN ACCORDANCE WITH CITY STANDARD CONSTRUCTION DETAILS EXCEPT AS NOTED HEREON.
 2. PLACE MINIMUM 4" TOPSOIL FROM ONSITE SOURCES IN PARKWAY MEDIANS AND SLOPES. HYDROMULCH SEED WITH BERMUDA GRASS AS PER SPECIFICATIONS.
 3. COMPACT ALL FILLS TO MINIMUM 95% OF STANDARD PROCTOR DENSITY.
 4. DO NOT ENTER OR DISTURB EXISTING VEGETATION EXCEPT DURING CONSTRUCTION OF 18" STORM DRAIN AND INTERCEPTOR DITCH. RE-VEGETATE IMMEDIATELY.
 5. TRIM TREES TO PROVIDE 14' CLEARANCE AT BACK OF CURB LINE AND TO PROVIDE SIGHT VISIBILITY AT INTERSECTIONS TRIM LIMBS AT MAIN TRUNK OR LIMB JUNCTION WITH SMOOTH CUT. TREAT CUTS WITH PRUNNING COMPOUND.



TYPICAL SECTION - HORIZON ROAD WIDENING
 N.T.S.



TYPICAL SECTION - RALPH HALL PARKWAY (FULLY DEVELOPED)
 N.T.S.

- GENERAL NOTES**
1. ALL CONSTRUCTION SHALL CONFORM TO THE LATEST EDITION OF THE CITY OF ROCKWALL "STANDARD SPECIFICATIONS FOR CONSTRUCTION" AND "STANDARD CONSTRUCTION DETAILS" EXCEPT AS AMENDED BY THESE PROJECT PLANS AND THE PROJECT CONTRACT DOCUMENTS.
 2. THE TYPICAL SECTION SHALL BE AMENDED TO THE SECTION SHOWN HEREON.
 3. STORM WATER POLLUTION AND CONTROL DETAILS AND SPECIFICATIONS SHALL BE IN ACCORDANCE WITH THESE PLANS.
 4. INSTALL EROSION CONTROL SILT FENCES, AND ROCK DAMS PRIOR TO BEGINNING ANY CLEARING AND GRADING. GRADE DIVERSION SWALES TO DIRECT STORM RUNOFF AS FIRST PHASE OF GRADING.
 5. PROVIDE PHASE I, II, & III INLET TREATMENT AT ALL INLET LOCATIONS.

* 1/4" Ft. min. slope &
 3/4" /Ft. max. slope