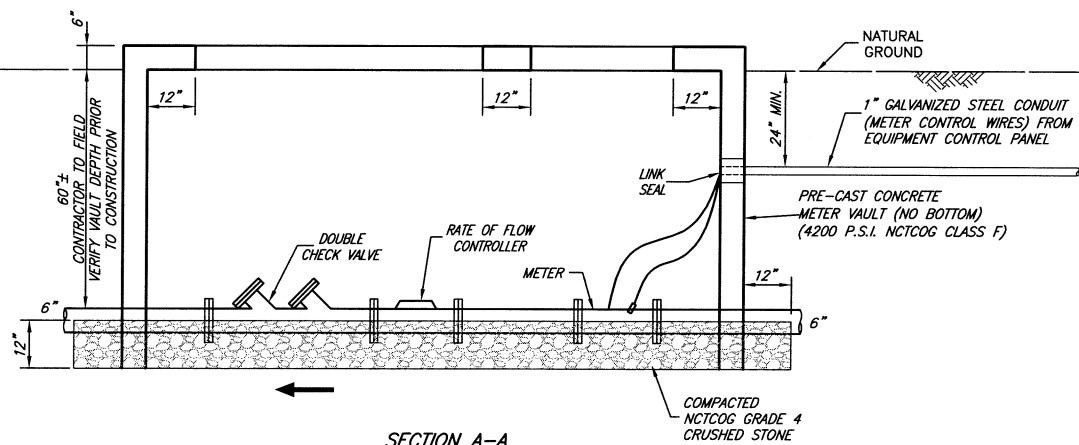
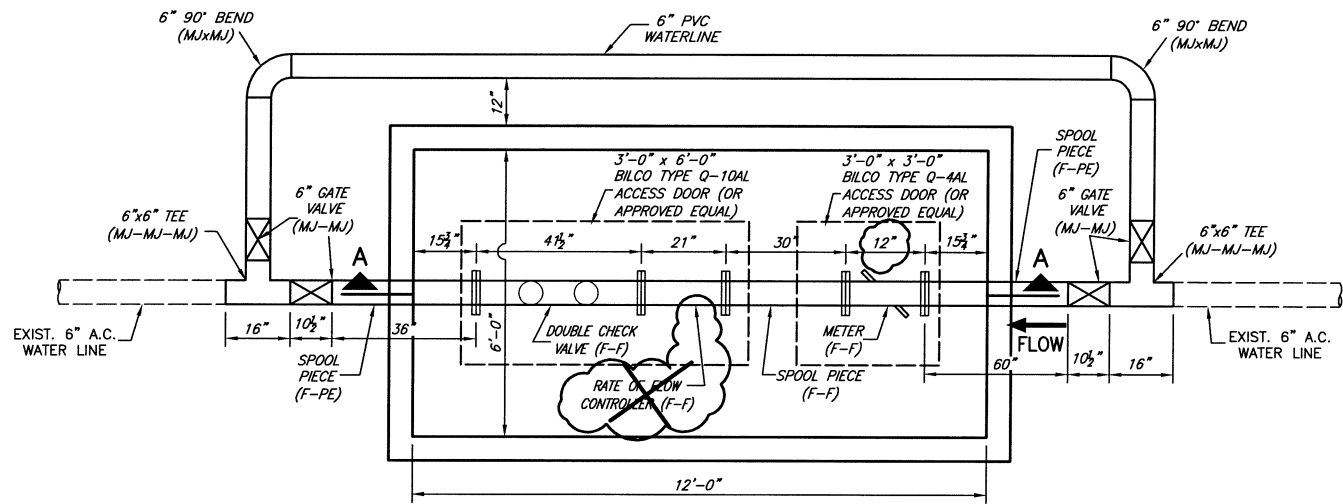


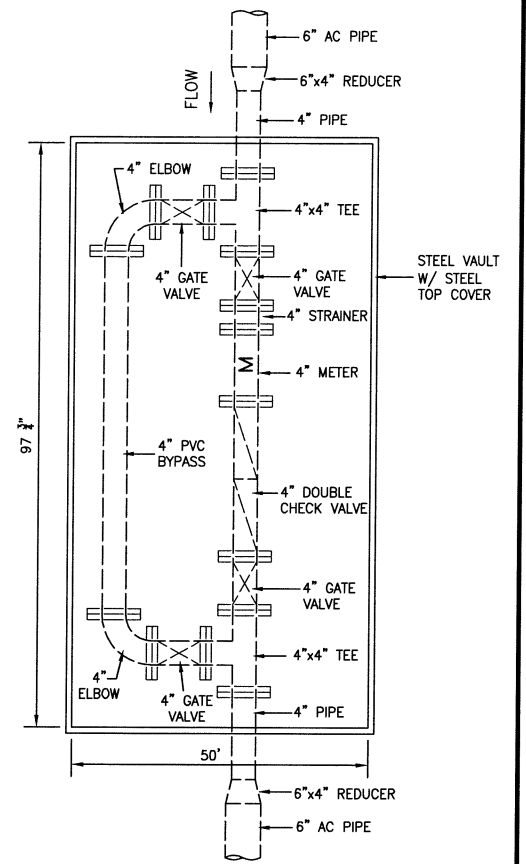
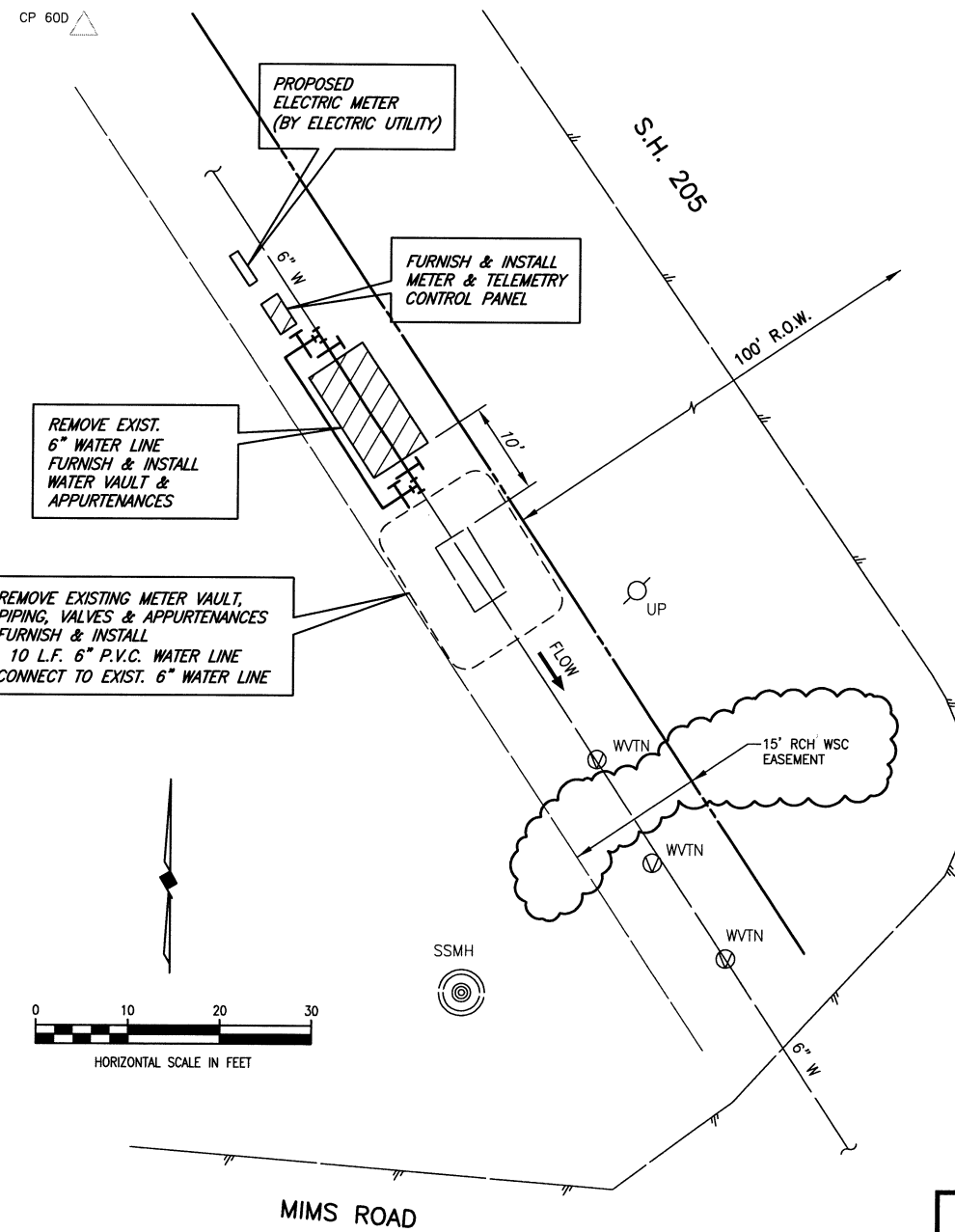
PLOTTED BY: GCEK ON 3/12/2009
 PLOT STYLE: 11x17.ctb
 PLOT SCALE: 1:20.13
 H:\Projects\Rockwall\2006153\Sheets\2006153-02.dwg
 REVISED: 3/12/09 - GCEK

NOTES:

1. PIPING & APPURTENANCES MAY BE INSTALLED INDIVIDUALLY IN THE FIELD OR AS A PACKAGED METER VAULT ASSEMBLY AS MANUFACTURED BY PARK EQUIPMENT COMPANY OR APPROVED EQUAL.
2. GATE VALVE : MUELLER RESILIENT WEDGE
3. DOUBLE CHECK VALVE : WATTS SERIES 709
4. ~~RATE OF FLOW CONTROLLER : WATTS 6000 SERIES W/ ORIFICE PLATE FLOW RATING OF ORIFICE PLATE TO BE (NOT THIS CONTRACT) DETERMINED BY CITY DURING SHOP DRAWING REVIEW.~~
5. METER : EASTTECH BADGER VANTAGE 4600 TRANSIT TIME W/ WINDOWED SPOOL PIECE (EPOXY LINED WELDED STEEL PIPE)
6. SPOOL PIECES : ANSI/AWWA C115 DUCTILE IRON
7. DUCTILE IRON FITTINGS : ANSI/AWWA C110 FULL BODY
8. PIPE OUTSIDE VAULT : AWWA C900 DR14 PVC
9. ALL DISTURBED AREAS SHALL BE REPAIRED W/ SOLID BLOCK SODDING (NO PAY ITEM).



PROPOSED METER VAULT NO. 1
 NOT TO SCALE



This record drawing is a compilation of the sealed engineering drawing for this project; modified by addenda, change orders and information furnished by the contractor. The information shown on the record drawings that was provided by the contractor or others not associated with the design engineer cannot be verified for accuracy or completeness. This original sealed drawings are on file at the offices of Birkhoff, Hendricks & Conway, L.L.P.
 BY P.A.C. DATE 03/12/09

These plans and related specifications were prepared for construction of this specific project only. Reuse of these documents is not permitted without written authorization of Birkhoff, Hendricks, & Conway, L.L.P.

CITY OF ROCKWALL, TEXAS
RCH WSC METER REPLACEMENT
METER NO. 1

BIRKHOFF, HENDRICKS & CONWAY, L.L.P.
 CONSULTING ENGINEERS
 Dallas, Texas

PROJECT ENGINEER:	P.C.	PROJECT:	2006-153	SHEET NO.	
PROJECT TECHNICIAN:	J.Y.	DATE:	March, 2009		2



[Signature]
 12/7/07