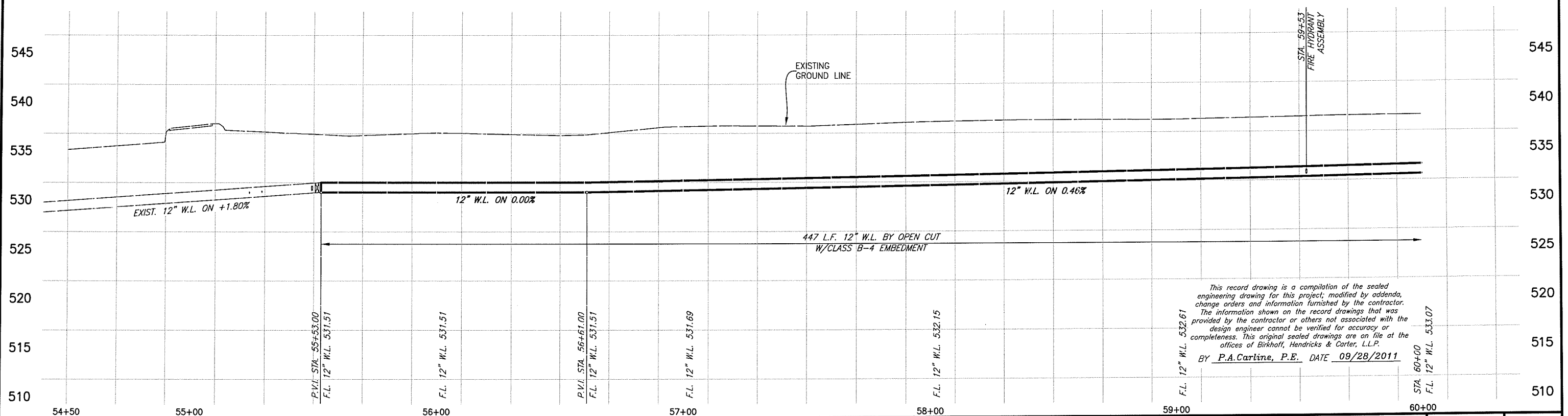
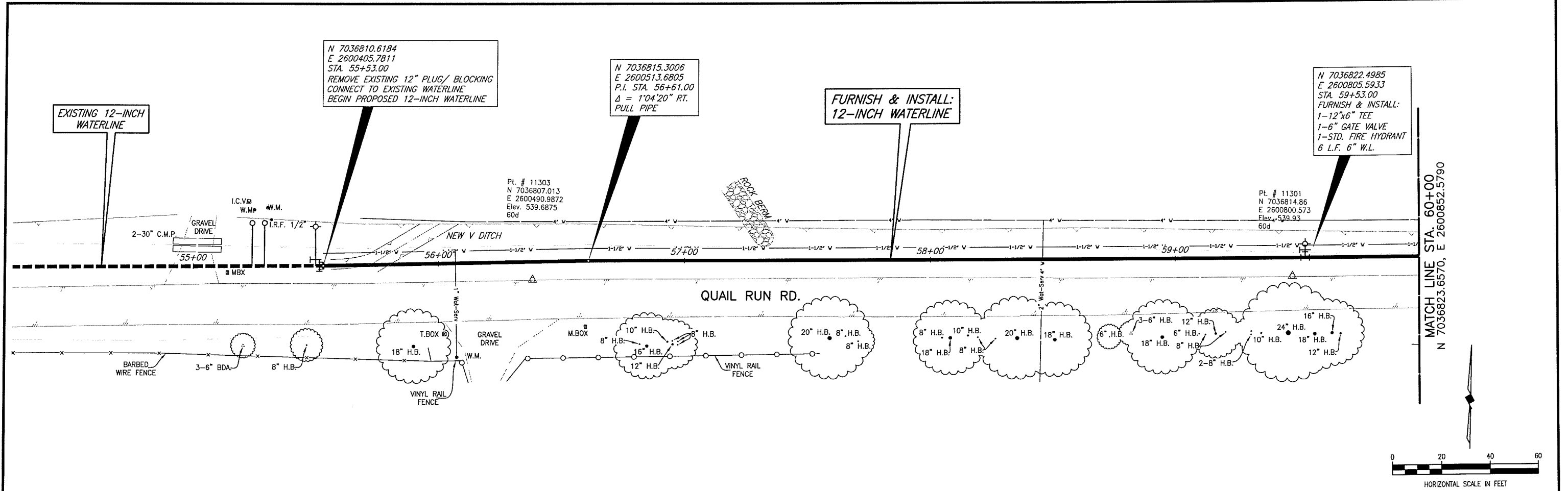


These plans and related specifications were prepared for construction of this specific project only. Reuse of these documents is not permitted without written authorization of Birkhoff, Hendricks & Carter, L.L.P.



This record drawing is a compilation of the sealed engineering drawing for this project; modified by addenda, change orders and information furnished by the contractor. The information shown on the record drawings that was provided by the contractor or others not associated with the design engineer cannot be verified for accuracy or completeness. This original sealed drawings are on file at the offices of Birkhoff, Hendricks & Carter, L.L.P.
 BY P.A. Carline, P.E. DATE 09/28/2011

BIRKHOFF, HENDRICKS & CARTER, L.L.P. PROFESSIONAL ENGINEERS Texas Firm F526 11910 Greenville Ave., Suite 600 Dallas, Texas 75243 (214) 361-7900			CITY OF ROCKWALL, TEXAS QUAIL RUN ROAD WATER LINE - PHASE 2 PLAN-PROFILE STA. 55+53 TO STA. 60+00	BHC PROJECT NO. 2011-104 APRIL 2011	SHEET NO. 3
--	--	--	--	--	---------------------------