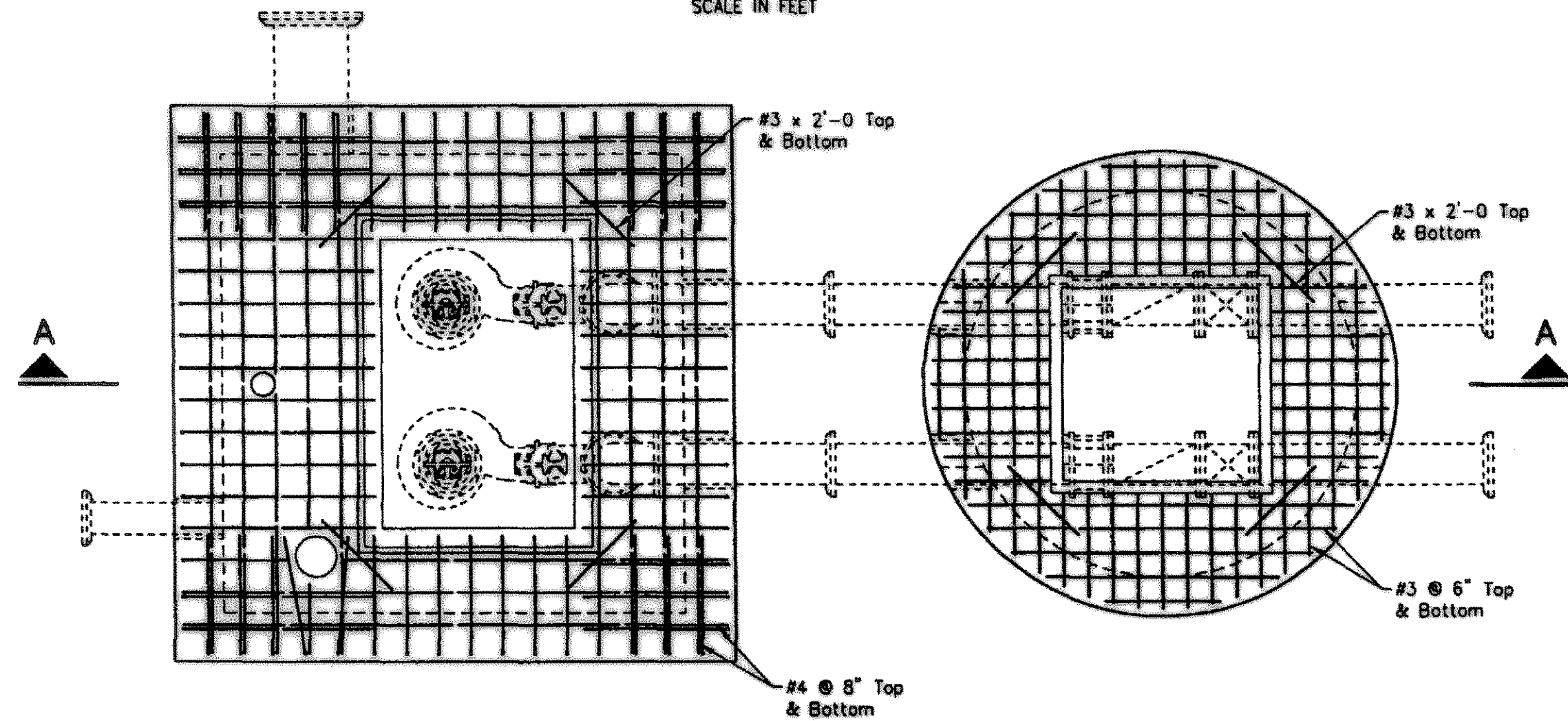
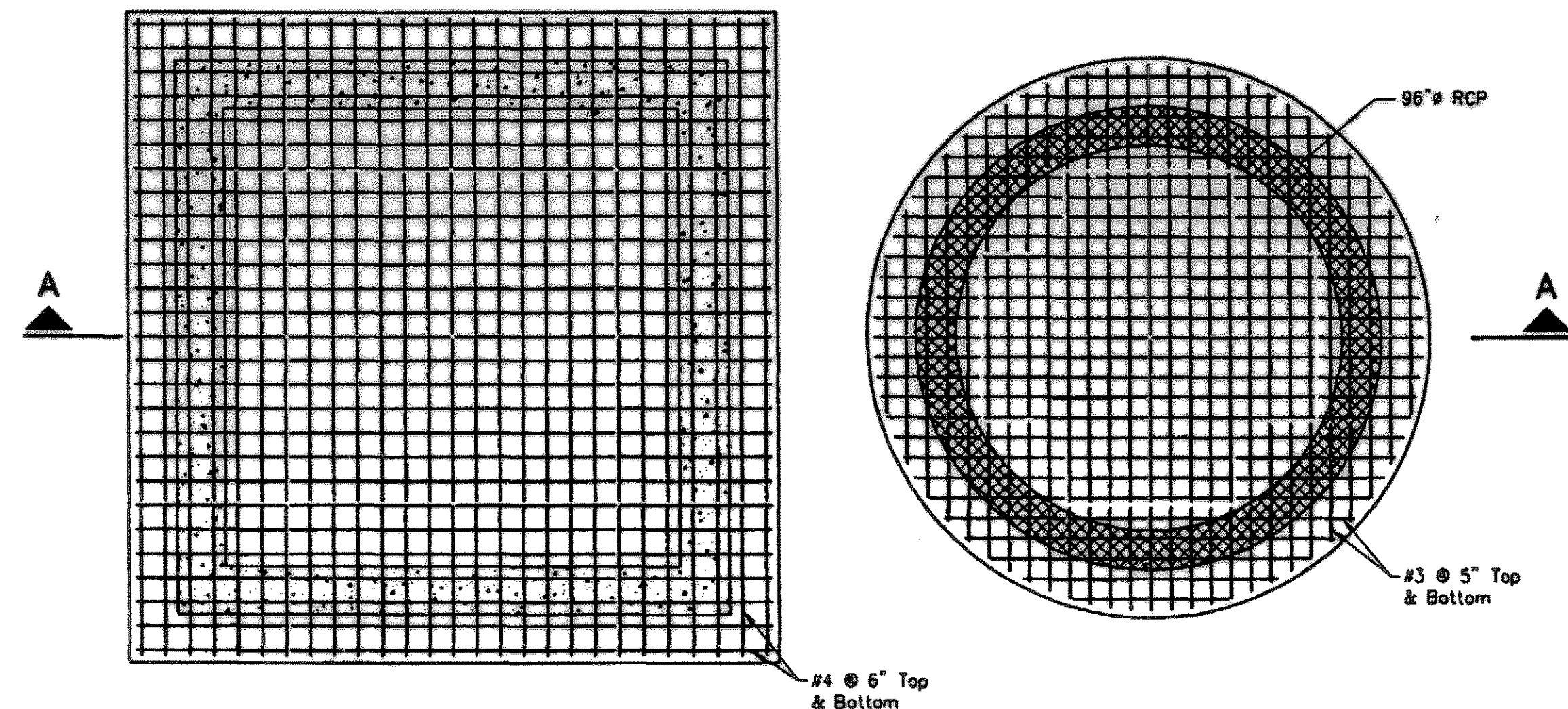


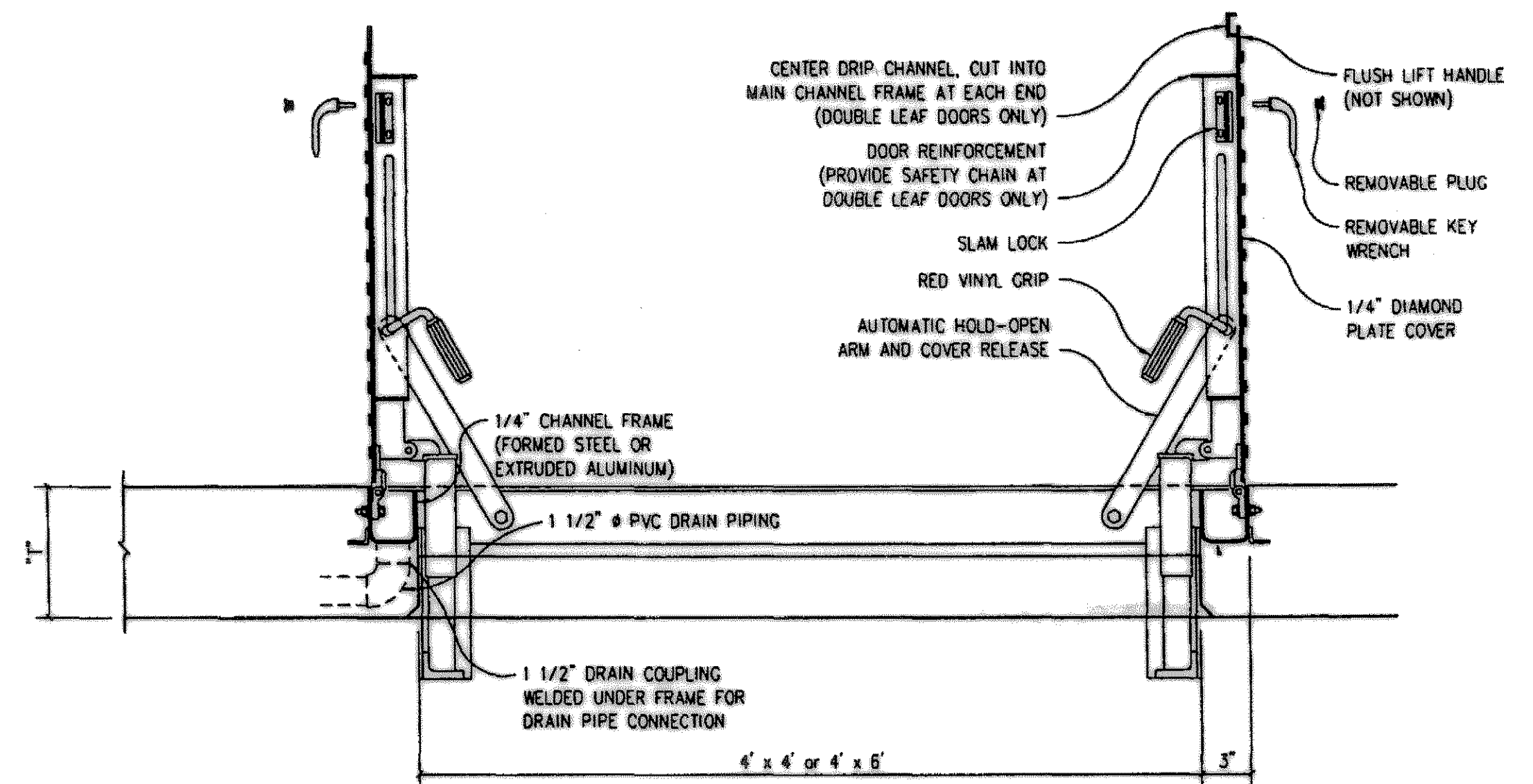
PLAN
SCALE IN FEET



TOP SLAB REINFORCING PLAN
SCALE IN FEET



BOTTOM SLAB REINFORCING PLAN



NOTE:
ACCESS DOOR SHALL BE TYPE J0-2AL AS MANUFACTURED BY THE BILCO COMPANY, NEW HAVEN, CONNECTICUT. DOOR LEAF SHALL BE 1/4" STEEL (OR ALUMINUM) DIAMOND PATTERN PLATE TO WITHSTAND A LIVE LOAD OF 300 POUNDS PER SQUARE FOOT. CHANNEL FRAME SHALL BE 1/4" STEEL (OR ALUMINUM) WITH AN ANCHOR FLANGE AROUND THE PERIMETER. DOOR(S) SHALL BE EQUIPPED WITH HEAVY FORGED BRASS HINGES, STAINLESS STEEL PINS, COMPRESSION SPRING OPERATORS FOR EASY OPERATION, AND AN AUTOMATIC HOLD-OPEN ARM WITH RELEASE HANDLE. A SNAP LOCK WITH REMOVABLE HANDLE SHALL BE PROVIDED. A 1 1/2" DRAINAGE COUPLING SHALL BE LOCATED IN THE FRONT RIGHT CORNER OF THE CHANNEL FRAME. ALL HARDWARE SHALL BE 316 STAINLESS STEEL. FACTORY FINISH SHALL BE PRIME COAT OF RED OXIDE APPLIED TO STEEL DOORS AND FRAMES. (FOR ALUMINUM, SUBSTITUTE: "MILL-FINISH WITH BITUMINOUS COATING APPLIED TO EXTERIOR OF THE FRAME.") INSTALLATION SHALL BE IN ACCORDANCE WITH MANUFACTURER'S INSTRUCTIONS.

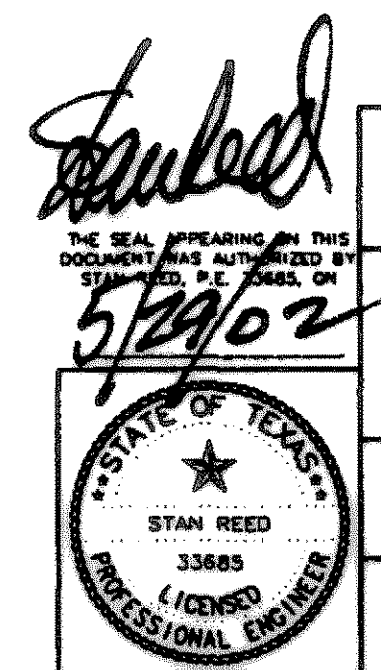
SD 44D SIDEWALK DOOR

REVISED TO CONFORM TO CONSTRUCTION RECORDS BY PAC DATE 10/31/05

NOTE:
1. CONCRETE -- 4,000 PSI.
2. REINFORCING STEEL -- ASTM A615, GRADE 60.

CAST-IN-PLACE OPTION SHOWN, PRECAST SIMILAR

These plans and related specifications were prepared for construction of this specific project only. Reuse of these documents is not permitted without written authorization of Birkhoff, Hendricks, & Conway, L.L.P.



CITY OF ROCKWALL, TEXAS		
QUAIL RUN LIFT STATION		
STRUCT. PLANS & SECTIONS (1of4)		
BIRKHOFF, HENDRICKS & CONWAY, L.L.P. CONSULTING ENGINEERS Dallas, Texas		
DESIGNED BY: S.C.R.	PROJECT: 2000 172	SHEET NO. S1
DRAWN BY: S.C.R.	DATE: MAY, 2002	OF SHEETS