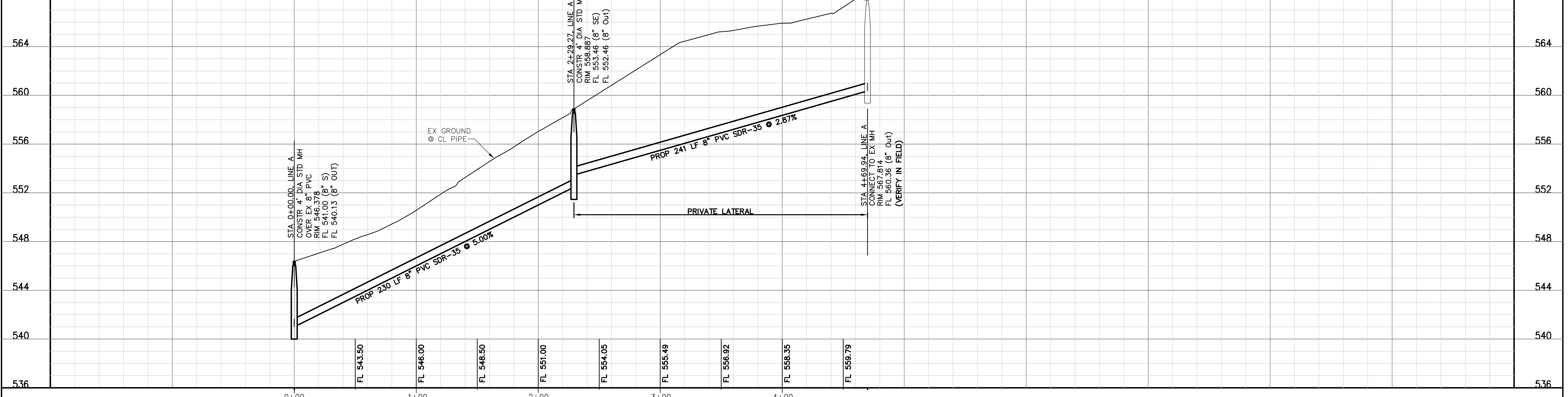


**GENERAL NOTES:**

1. ALL CONSTRUCTION SHALL BE IN ACCORDANCE WITH THE CITY OF ROCKWALL STANDARDS, SPECIFICATIONS & STANDARD DETAILS AND N.C.T.C.O.G. STANDARD SPECIFICATIONS 3rd EDITION.
2. UTILITIES SHOWN ON THE PLANS WERE TAKEN FROM FIELD SURVEYS AND INFORMATION PROVIDED BY THE UTILITY COMPANIES. THE COMPLETENESS AND THE ACCURACY OF THIS DATA IS NOT GUARANTEED. THE CONTRACTOR IS RESPONSIBLE FOR VERIFYING THE LOCATION OF ALL UNDERGROUND UTILITIES AND STRUCTURES AND PROTECTING THEM FROM DAMAGE DURING CONSTRUCTION.
3. WORK MAY NOT BE BACKFILLED OR COVERED UNTIL IT HAS BEEN INSPECTED BY THE CITY.
4. FRANCHISE UTILITY CONTACTS: CALL 1-800-344-8377 FOR LINE LOCATES (48 HR. ADVANCE)  
EMERGENCY CONTACT NUMBERS  
"ONCOR" - 888-313-4747  
"ATMOS (GAS)" - 800-442-7259  
"AT&T" - 800-286-8313  
"CHARTER" - 800-314-7195  
"CITY OF ROCKWALL" SERVICE CENTER- 972-771-7730
5. ANY FENCES DAMAGED OR REMOVED BY CONSTRUCTION ACTIVITIES SHALL BE REPLACED AT THE SAME LOCATION WITH A FENCE OF EQUAL OR SUPERIOR QUALITY AT CONTRACTOR'S EXPENSE.
6. CONTRACTOR SHALL SECURE EXCAVATION AT THE END OF EACH DAY. NO TRENCHES SHALL BE LEFT OPEN OVERNIGHT IN STREETS.
7. ALL MANHOLE LIDS SHALL BE EITHER 30" PAMREX OR 30" PAMTIGHT (BOLT DOWN) OR APPROVED EQUAL.
8. CONSHIELD TERRA COTTA COLOR OR RAVON EPOXY COATING, OR EQUAL, SHALL BE INSTALLED IN ALL NEW MANHOLES AND IN EXISTING MANHOLES BEING MODIFIED.
9. SANITARY SEWER LINES SHALL HAVE GREEN EMS LOCATOR PADS AT EVERY MANHOLE, CLEANOUT, AND SERVICE.
10. ALL SANITARY SEWER PIPE SHALL BE 8" SDR-35 PIPE. GREEN IN COLOR. EMBEDMENT SHALL BE AS PER NCTCOG DRAWING #3030, CLASS "B-2" (MODIFIED). COMPACTED TO 95% STANDARD PROCTOR DENSITY WITH CITY REVISIONS.
11. LOCATION OF MANHOLE AT STATION 2+29.27 MAY BE ADJUSTED TO AVOID EXISTING TREES AS APPROVED BY CITY.

**LINE "A"**



**CAUTION EXISTING UTILITIES !!!**

Existing utilities and underground facilities indicated on these plans have been located from reference information. It shall be the responsibility of the contractor to verify both horizontally and vertically the location of all existing utilities and underground facilities prior to construction, to take the necessary precautions in order to protect all facilities encountered. The contractor shall preserve and protect all existing utilities from damage during construction.

The seal appearing on this document was authorized on Aug 24, 2016 by Michael Cummings, P.E. Tx. No. 41566. Alteration of a sealed document without proper notification to the responsible engineer is an offense under the Texas Engineering Practice Act.



**ELEVATIONS:**

THE ELEVATIONS HEREON WERE DERIVED FROM REDUNDANT RTK GPS OBSERVATIONS AND ARE BASED ON THE TEXAS COORDINATE SYSTEM, NORTH CENTRAL ZONE (4202) NAD 83 GEOID 12A.



1801 Gateway Blvd. Suite 101 Richardson, Texas 75080 Phone (972) 644-2800  
www.binkleybarfield.com

<b>PARK PLACE BLVD SANITARY SEWER RELOCATION LINE "A" PLAN &amp; PROFILE STA 0+00 TO END</b>			
Scale: 1"=40' H 1"=4' V	Date: Aug 24, 2016	Job No.: BC15026	<b>1</b>

N:\BC15026 (Rockwall San Sewer)\09 Park Place CAD FILES\ParkPlace-WS.dwg-ParkPlace-WS Plotted Aug 24, 2016 at 9:12am by bswester | Last Saved by bswester