

Revision	Date	Description

Owner:
CITY OF ROCKWALL

Developer:
Sterling One Construction L.L.C.
#2 Horizon Court • Heath, Texas 75032 • 469-772-9400

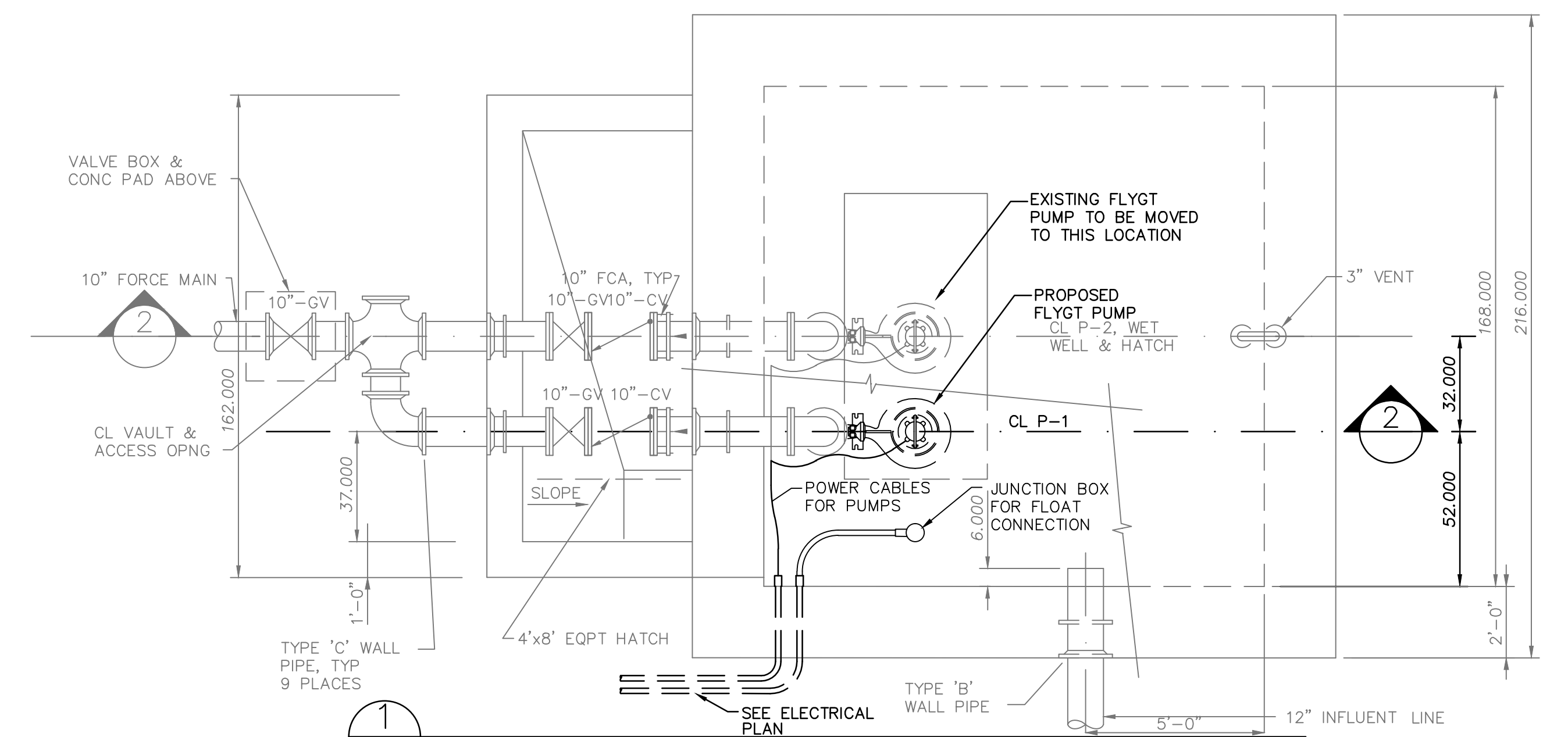
Harbor District Infrastructure
Rockwall, Texas

~ Civil Engineer ~
F.C. CUNY CORPORATION
#2 Horizon Court • Heath, Texas 75032 • (469) 402-7700
Texas Registered Engineering Firm F-7449

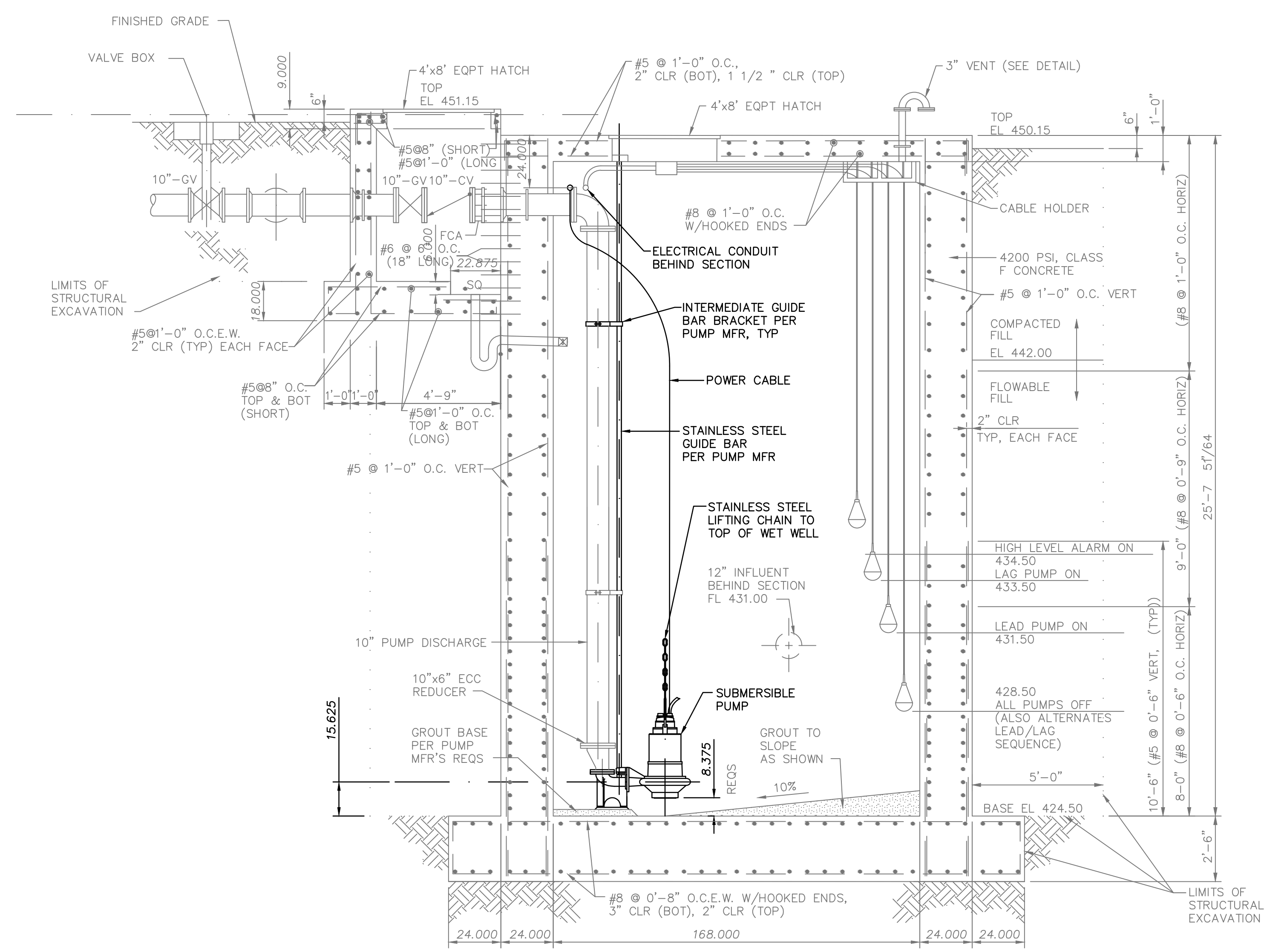
THE SEAL APPEARING ON THIS DOCUMENT WAS AUTHORIZED BY CHRISTOPHER R. CUNY, P.E. 65642



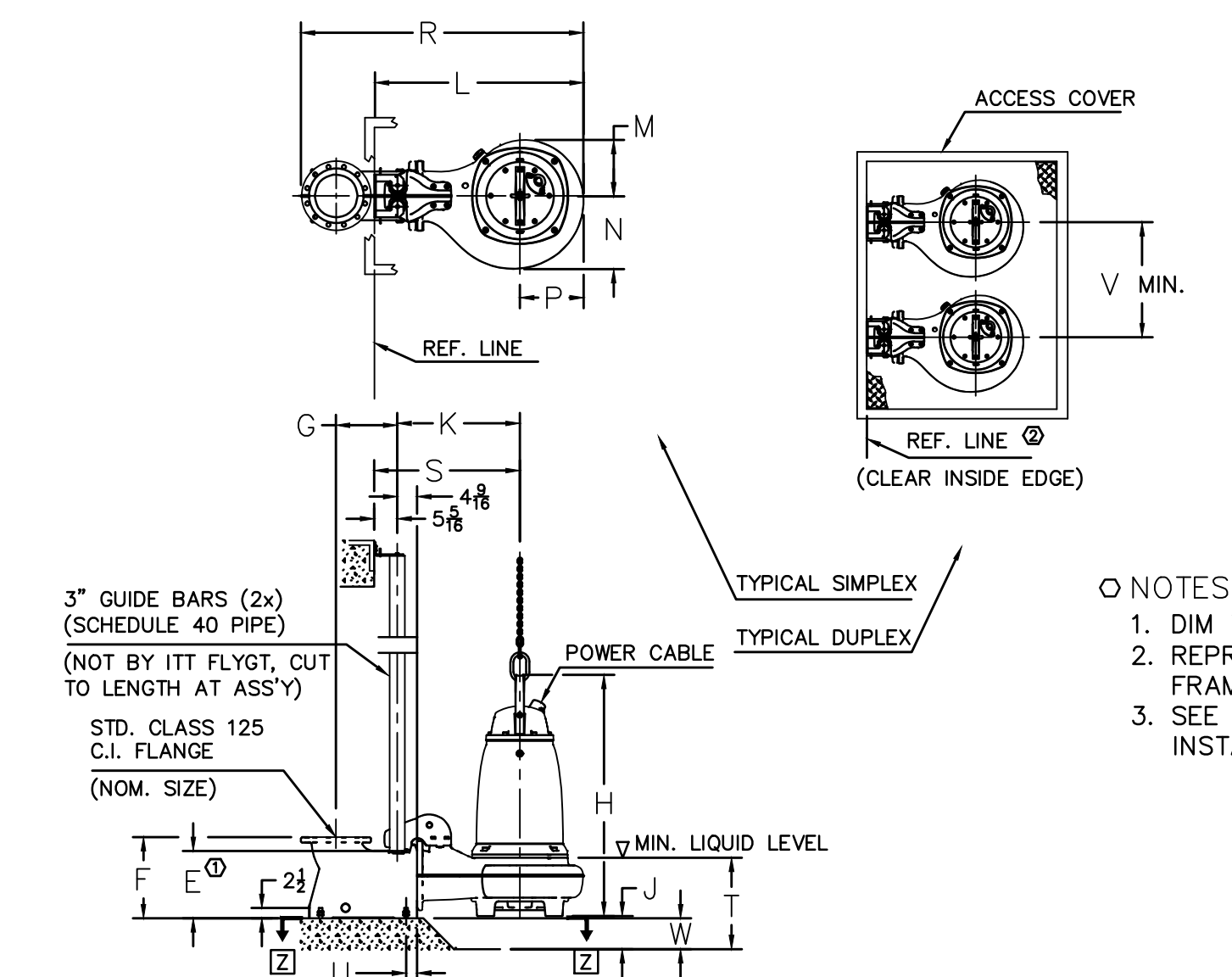
Drawn By: F.C. CUNY	Checked By: F.C. CUNY
Date: 09/11	Project No.:
Sheet Title: Lift Station Detail	
Scale: N.T.S.	Sheet No.:
20 of 21	



1 PLAN-NEW PUMP IN EXISTING LIFT STATION
SCALE: N.T.S.



2 SECTION
SCALE: N.T.S.



- NOTES:
- DIM TO END OF GUIDE BARS.
 - REPRESENTS CLEAR INSIDE EDGE OF ACCESS FRAME OR OPENING.
 - SEE STATION DWG. 14-68 19 15 FOR COMPLETE INSTALLATION DIMENSIONS.

DISCH. Q

VIEW [Z]-[Z]

NOM. SIZE	VERSION	WEIGHT (LBS.)	PUMP DISCH.
6"	HT	1875	205
10"	MT	2050	315
12"	LT	2230	645
14"	LT	2625	530

ALL DIMENSIONS IN INCHES

NOM. SIZE	VERSION	DIMENSIONAL CHART																			
		A	B	C	D	E	F	G	H	J	K	L	M	N	P	R	S	T	U	V	W
6"	HT	38	11 1/2	10	5	14	18	11	54	5	24 1/2	42	11 1/2	13	12	53 1/2	30	19	2 1/2	30	3 1/2
10"	MT	12 1/2	19 1/2	10	5	15 1/2	18 1/2	14 1/2	55 1/2	6 1/2	28 1/2	48 1/2	13	17	14 1/2	65 1/2	33 1/2	20	2 1/2	42	6
12"	LT	7 1/2	19 1/2	20 1/2	10 1/2	26 1/2	31 1/2	17 1/2	56 1/2	10 1/2	28 1/2	50	14	19 1/2	16 1/2	71 1/2	33 1/2	25	3 1/2	44	-
14"	LT	16	25 1/2	23 1/2	11 1/2	21	23 1/2	18 1/2	58 1/2	10 1/2	33 1/2	57	15 1/2	22 1/2	18 1/2	81	38 1/2	29	2 1/2	48	8 1/2

3 PUMP DETAIL
SCALE: N.T.S.